

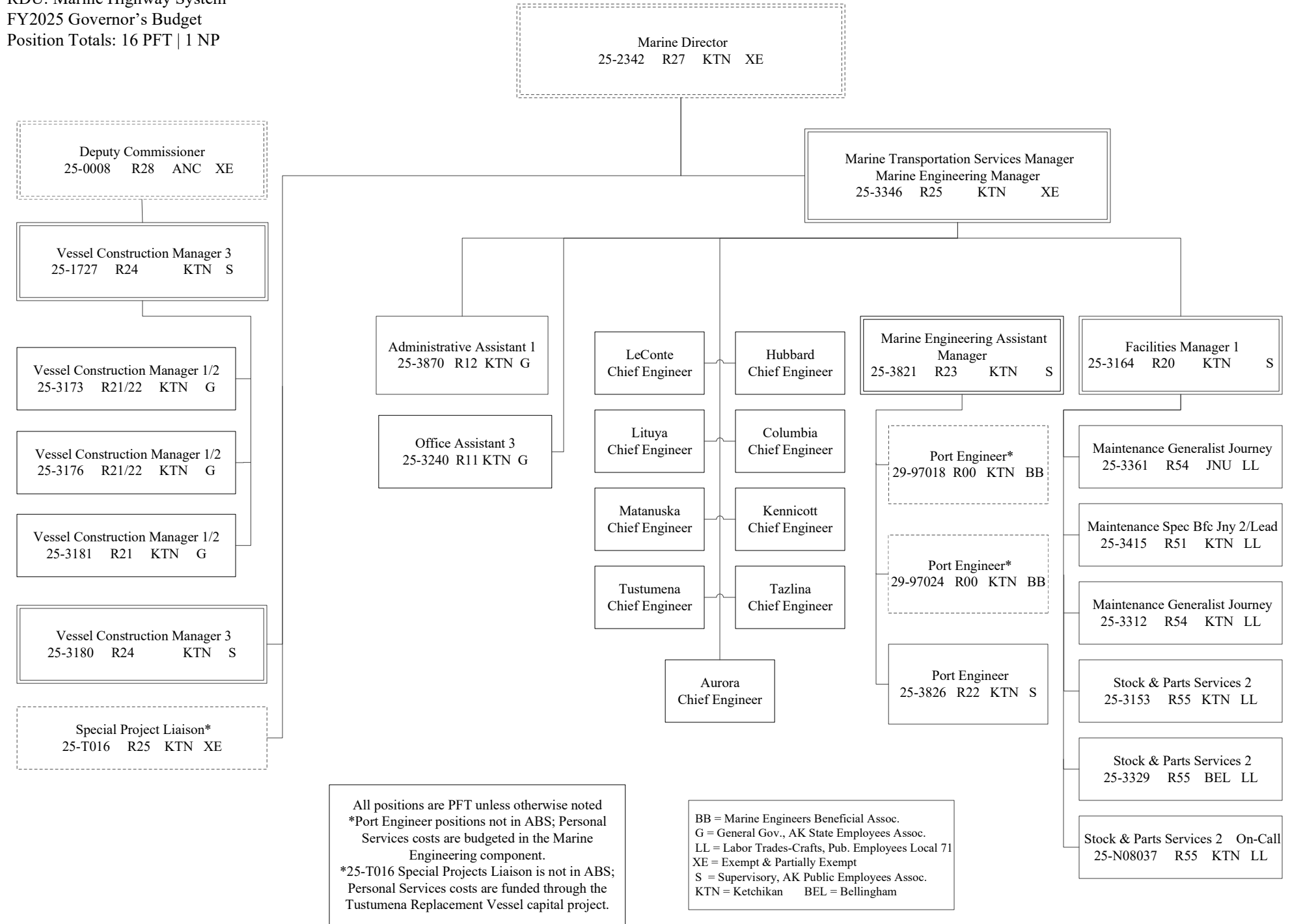
Department of Transportation & Public Facilities

Marine Engineering (2359)

RDU: Marine Highway System

FY2025 Governor's Budget

Position Totals: 16 PFT | 1 NP



All positions are PFT unless otherwise noted
 *Port Engineer positions not in ABS; Personal Services costs are budgeted in the Marine Engineering component.
 *25-T016 Special Projects Liaison is not in ABS; Personal Services costs are funded through the Tustumena Replacement Vessel capital project.

BB = Marine Engineers Beneficial Assoc.
 G = General Gov., AK State Employees Assoc.
 LL = Labor Trades-Crafts, Pub. Employees Local 71
 XE = Exempt & Partially Exempt
 S = Supervisory, AK Public Employees Assoc.
 KTN = Ketchikan BEL = Bellingham