

**Department of Transportation & Public Facilities**

Reservations and Marketing (625)

RDU: Marine Highway System (334)

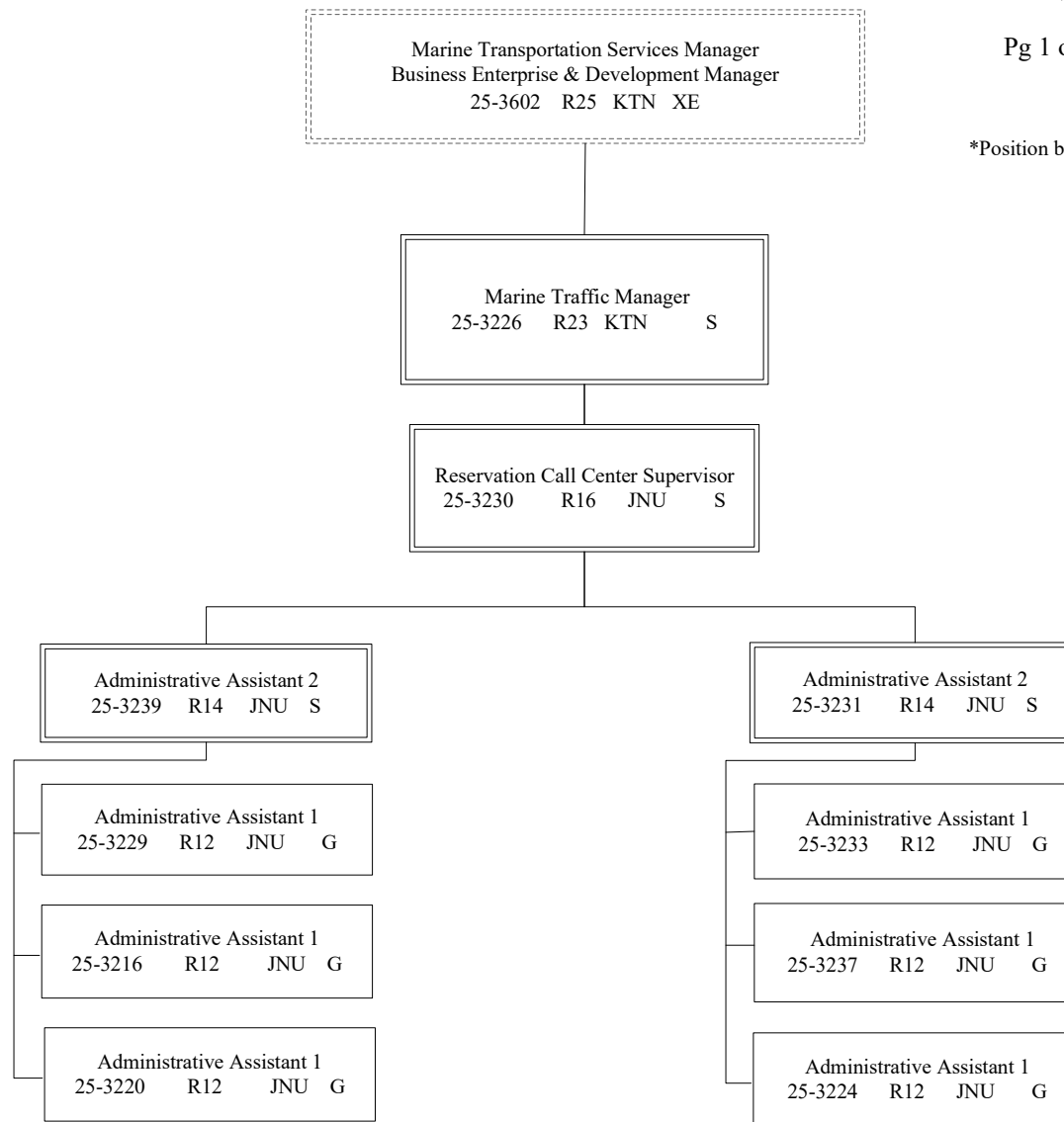
FY2025 Governor's Budget

Position Totals: 11 PFT

**AMHS Business Enterprise & Development**

Pg 1 of 2 **RESERVATIONS & SALES**

\*Position budgeted in Vessel Operations Mgt component



G = General Gov., AK State Employees Assoc.  
S = Supervisory, AK Public Employees Assoc.

KTN = Ketchikan JNU = Juneau  
All positions are PFT

**Department of Transportation & Public Facilities**

Reservations and Marketing (625)

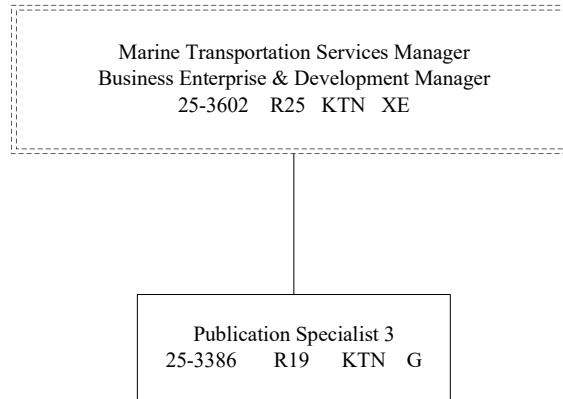
RDU: Marine Highway System (334)

FY2025 Governor's Budget

Position Totals: 11 PFT

**AMHS Business Enterprise & Development**

Pg 2 of 2 **MARKETING**



G = General Gov., AK State Employees Assoc.  
S = Supervisory, AK Public Employees Assoc.  
KTN = Ketchikan

All positions are PFT