

Department of Transportation & Public Facilities

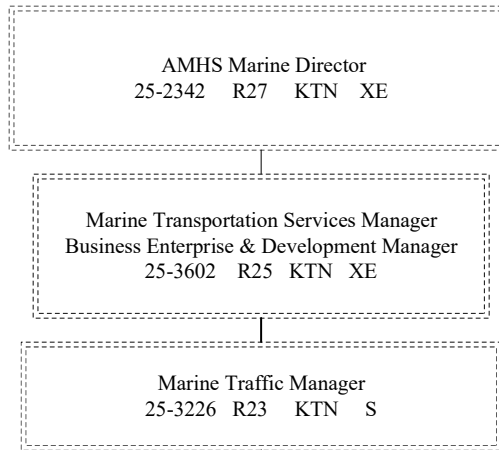
Marine Shore Operations (2789)

RDU: Marine Highway System (334)

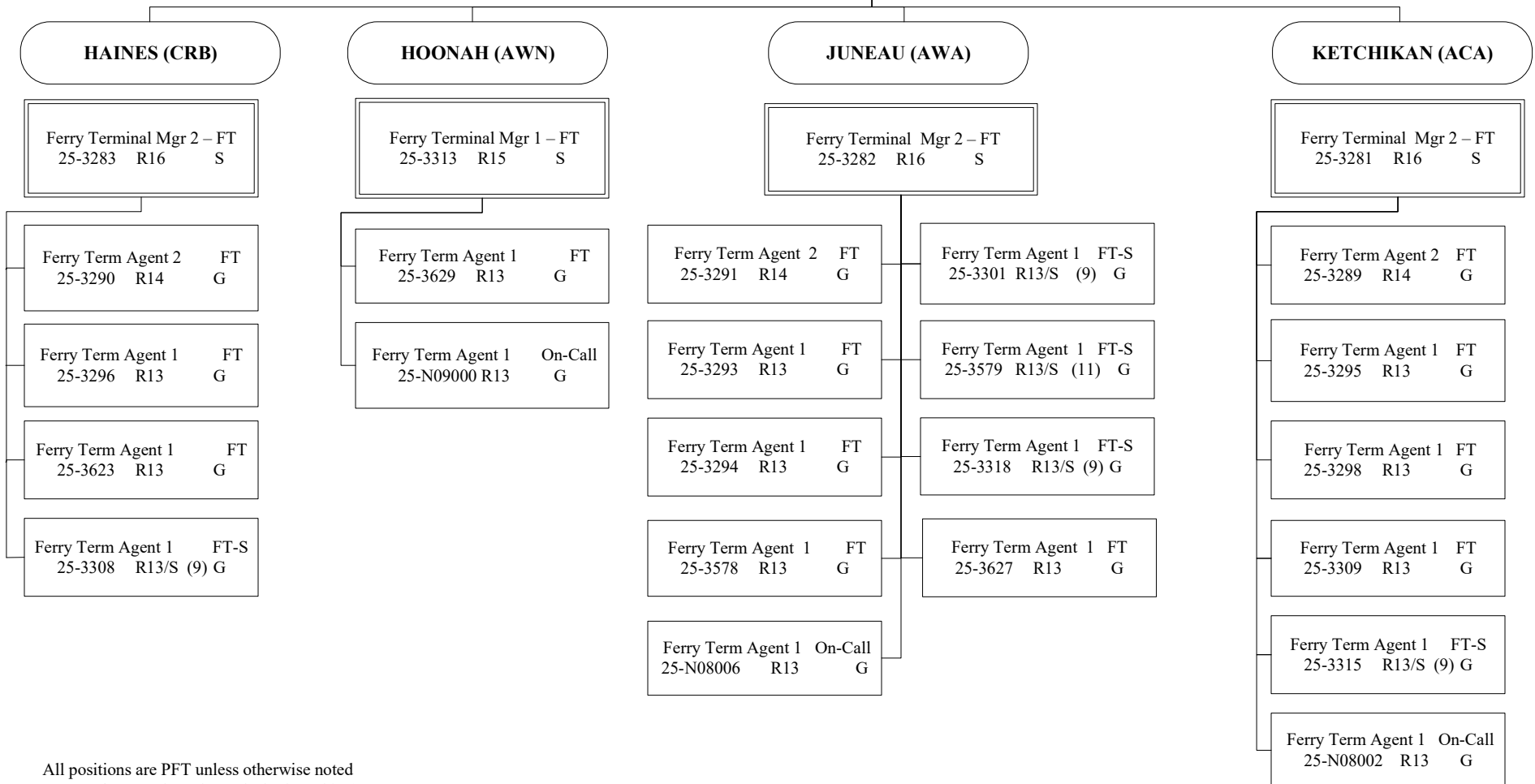
FY2025 Governor's Budget

Position Totals: 34 PFT | 23 PPT | 5 NP

SOUTHEAST TERMINALS



**AMHS
Marine Shore Operations
SOUTHEAST TERMINALS
Pg 1 of 3**



All positions are PFT unless otherwise noted
(S) = PPT/Seasonal, # of months budgeted in ()

Department of Transportation & Public Facilities

Marine Shore Operations (2789)

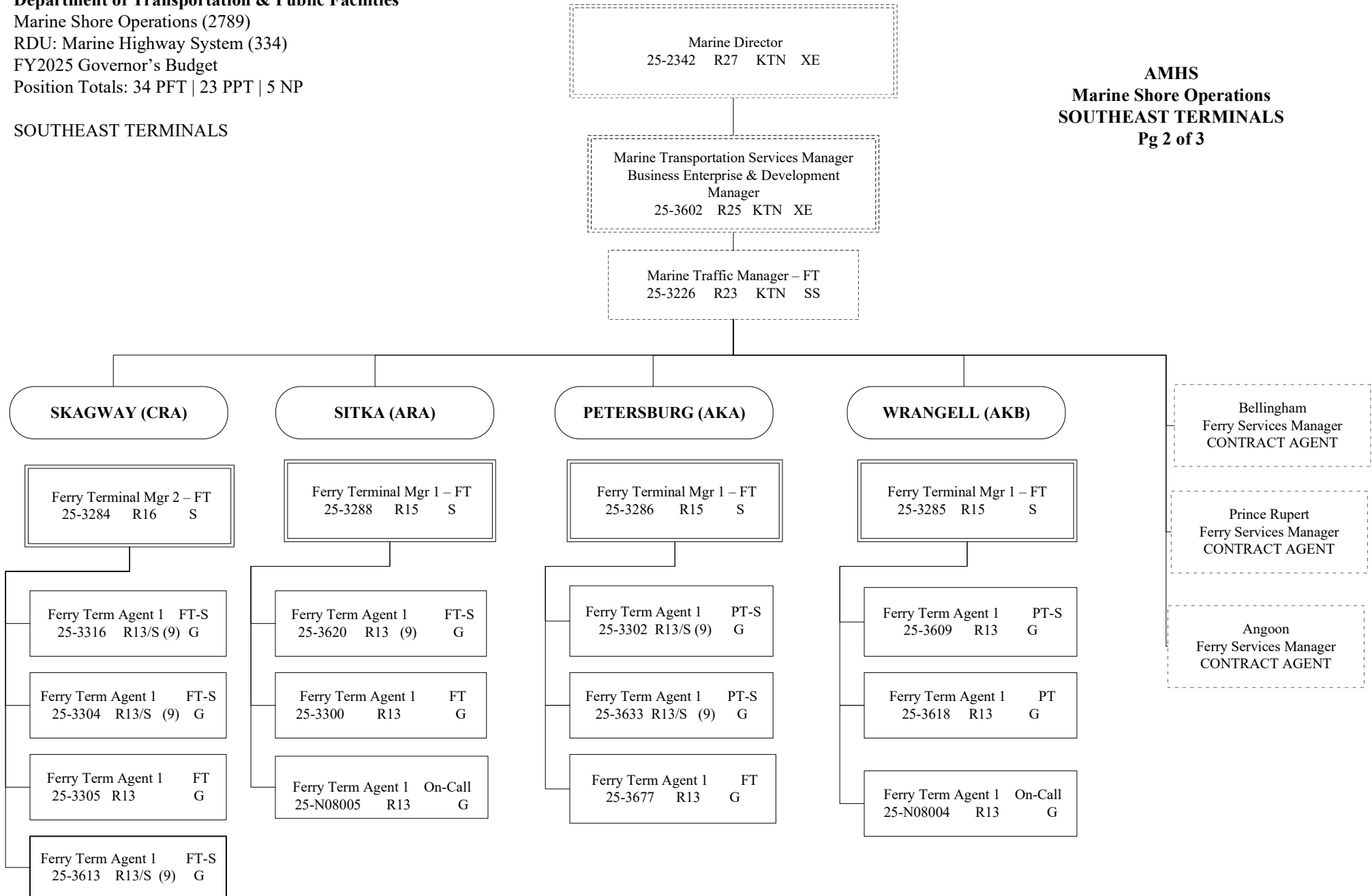
RDU: Marine Highway System (334)

FY2025 Governor's Budget

Position Totals: 34 PFT | 23 PPT | 5 NP

SOUTHEAST TERMINALS

**AMHS
Marine Shore Operations
SOUTHEAST TERMINALS
Pg 2 of 3**



All positions are PFT unless otherwise noted
(S) = PPT/Seasonal, # of months budgeted in ()

Department of Transportation & Public Facilities

Marine Shore Operations (2789)

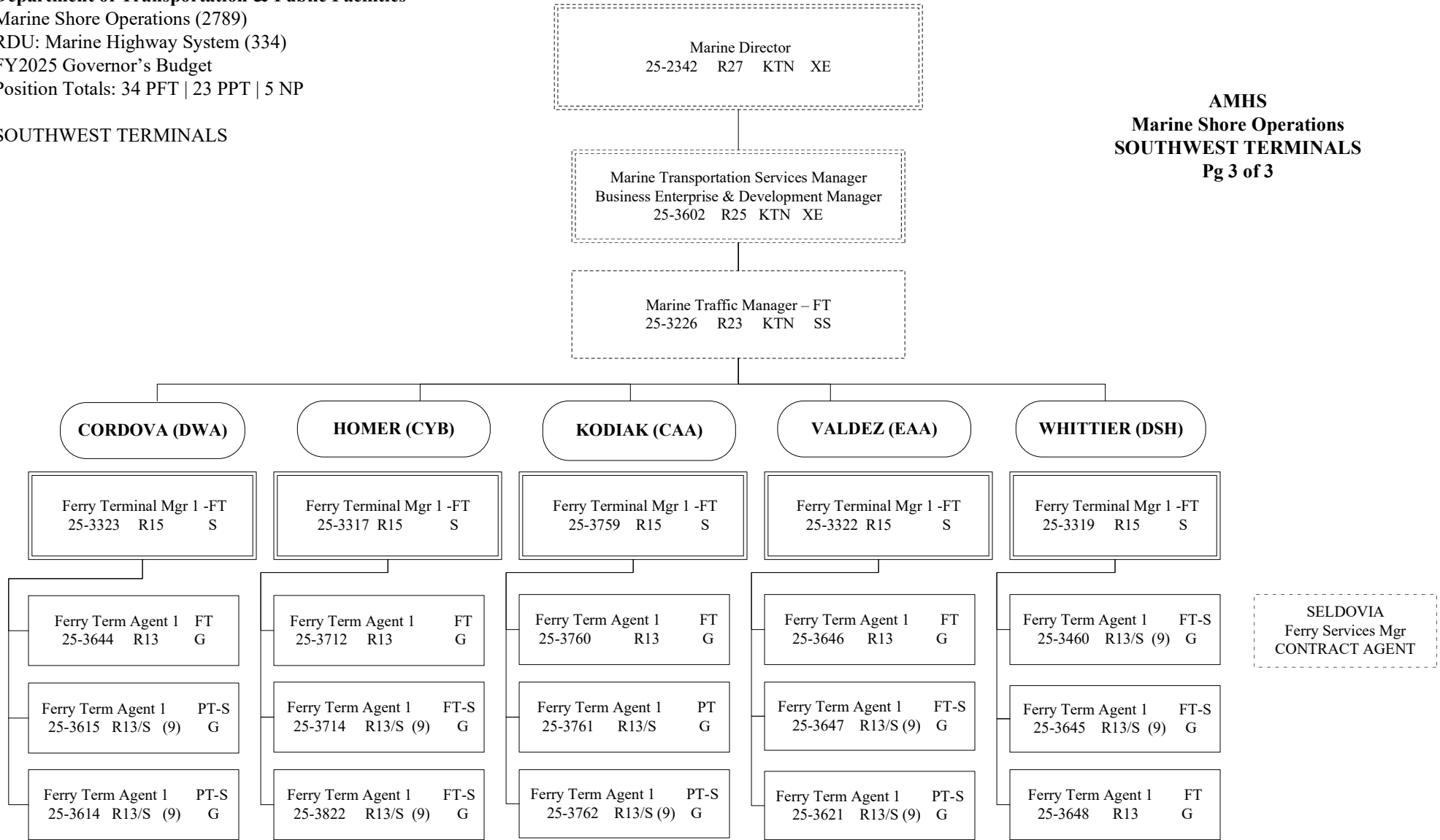
RDU: Marine Highway System (334)

FY2025 Governor's Budget

Position Totals: 34 PFT | 23 PPT | 5 NP

SOUTHWEST TERMINALS

**AMHS
Marine Shore Operations
SOUTHWEST TERMINALS
Pg 3 of 3**



All positions are PFT unless otherwise noted
(S) = PPT/Seasonal, # of months budgeted in ()