

**Department of Transportation & Public Facilities**

Vessel Operations Management (629)

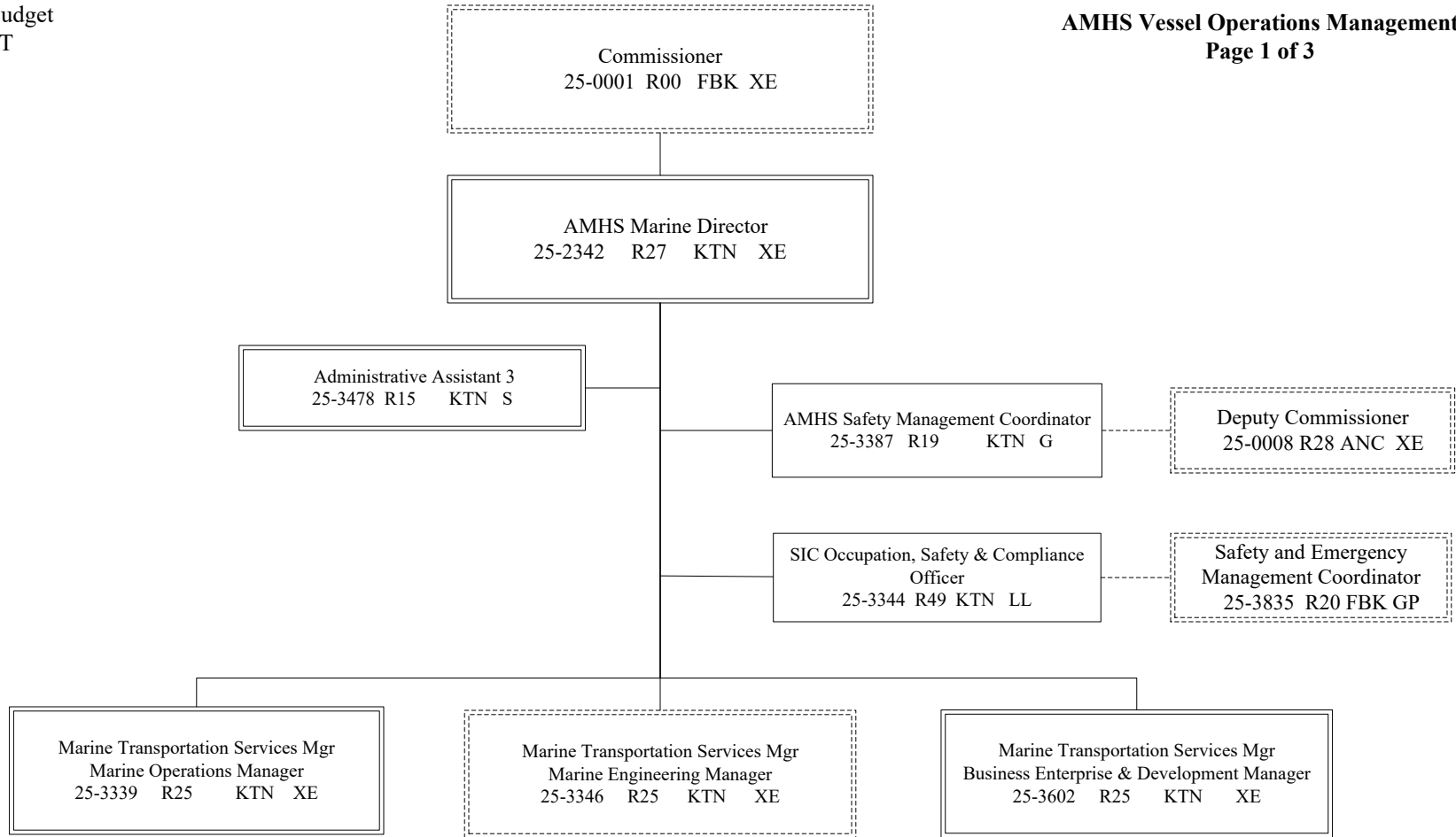
RDU: Marine Highway System (334)

FY2025 Governor's Budget

Position Totals: 33 PFT

**AMHS Vessel Operations Management**

**Page 1 of 3**



G = General Gov., AK State Employees Assoc.  
S = Supervisory, AK Public Employees Assoc.  
XE = Exempt

KTN = Ketchikan JNU = Juneau  
ANCH = Anchorage

**Department of Transportation & Public Facilities**

Vessel Operations Management (629)

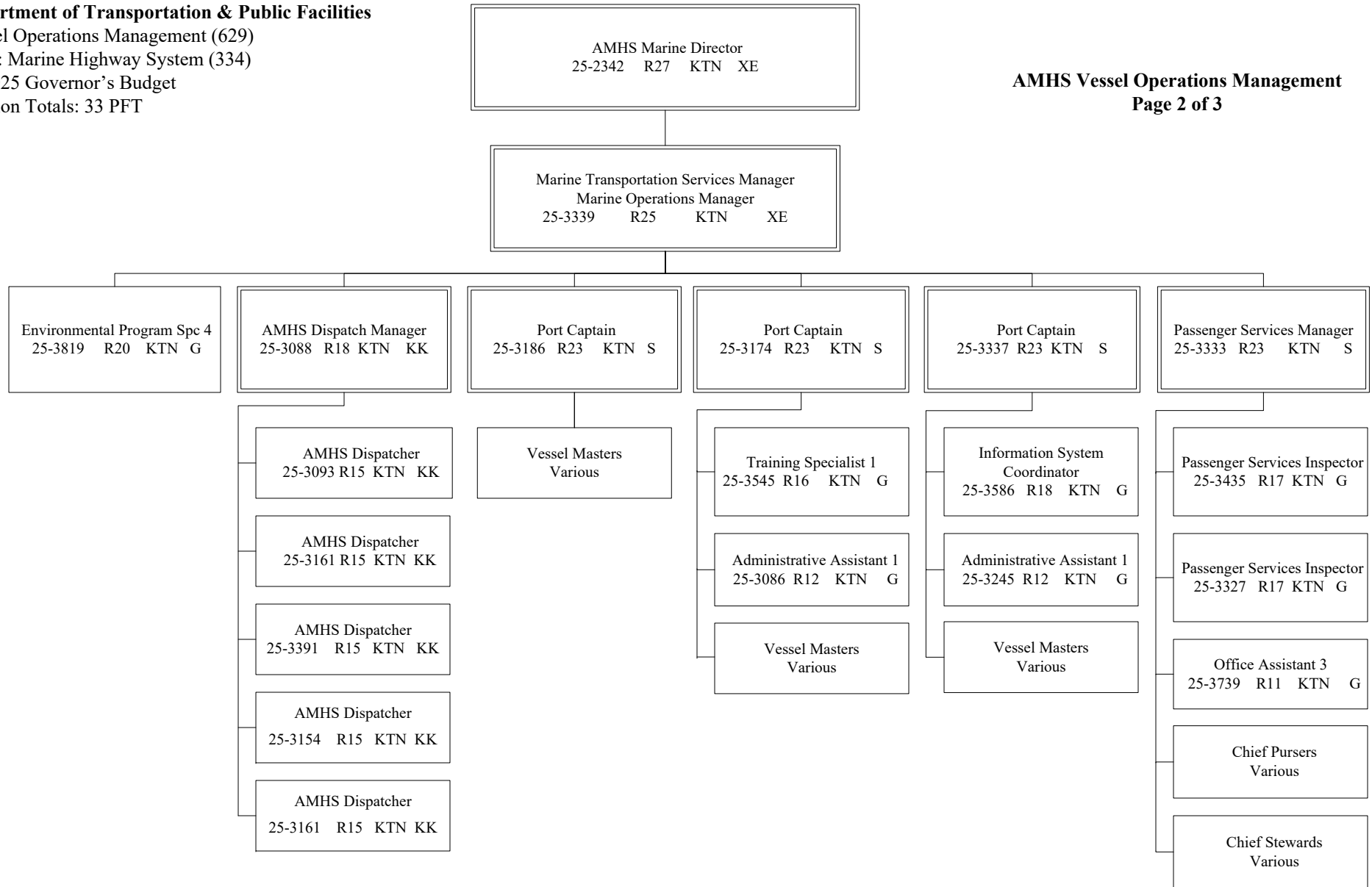
RDU: Marine Highway System (334)

FY2025 Governor's Budget

Position Totals: 33 PFT

**AMHS Vessel Operations Management**

**Page 2 of 3**



G = General Gov., AK State Employees Assoc.  
 S = Supervisory, AK Public Employees Assoc.  
 XE = Exempt  
 KK = Confidential Employees Assoc.  
 KTN = Ketchikan

**Department of Transportation & Public Facilities**

Vessel Operations Management (629)

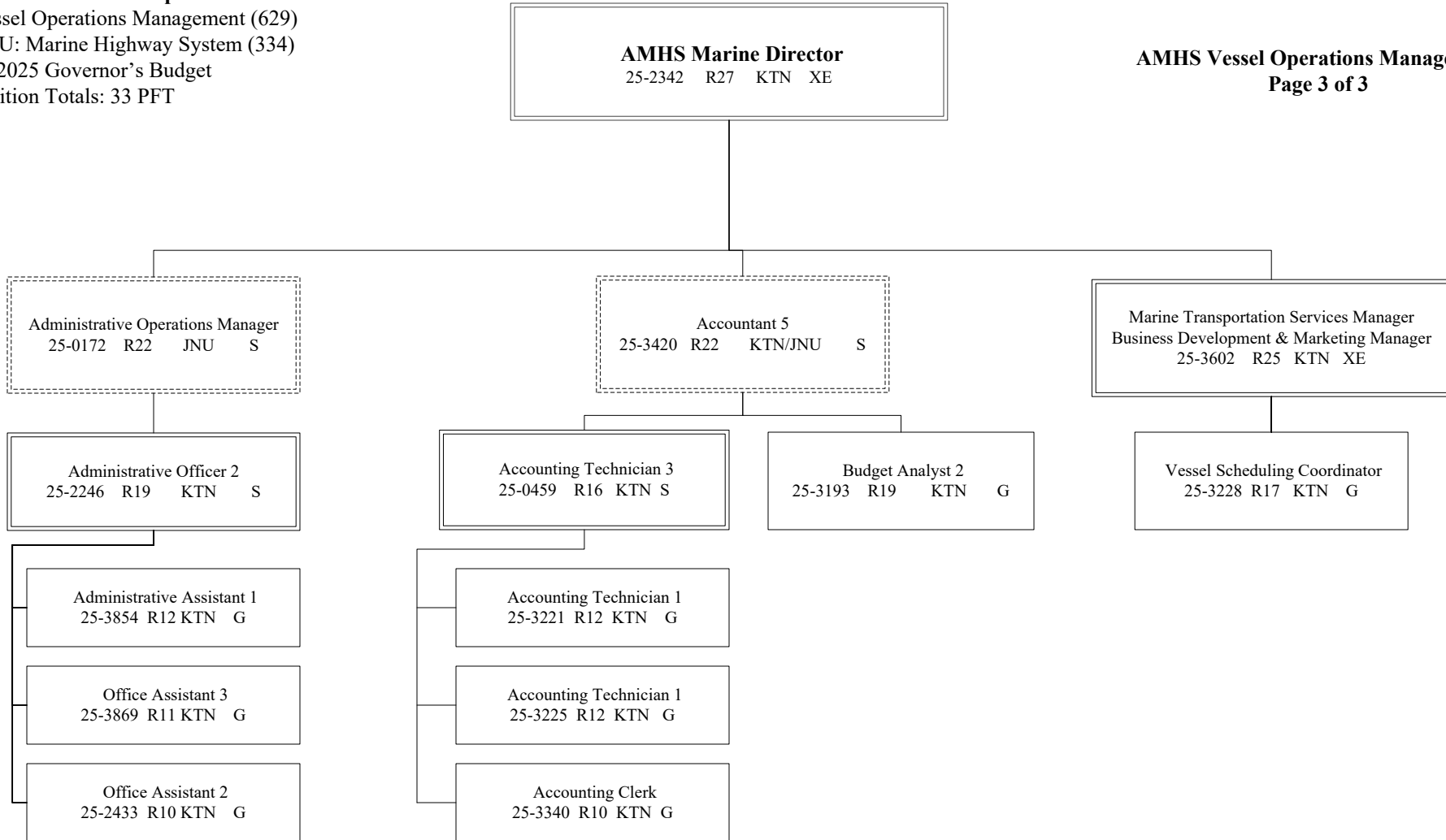
RDU: Marine Highway System (334)

FY2025 Governor's Budget

Position Totals: 33 PFT

**AMHS Vessel Operations Management**

**Page 3 of 3**



G = General Gov., AK State Employees Assoc.  
S = Supervisory, AK Public Employees Assoc.  
XE = Exempt  
  
KTN = Ketchikan

All positions are PFT unless otherwise noted.