

State of Alaska FY2025 Governor's Operating Budget

University of Alaska Prince William Sound College Component Budget Summary

Component: Prince William Sound College

Contribution to Department's Mission

Prince William Sound College (PWSC) is part of the community campus system of the University of Alaska Anchorage. The mission of PWSC is to use its unique resources and magnificent landscape to enrich the lives of our students and our communities. Located in Valdez, Alaska, with centers in Cordova and the Copper River Basin, PWSC provides access to a variety of educational and training opportunities in a geographically rich, culturally diverse, and inclusive environment. PWSC courses and programs, both on-campus and online, lead to Occupational Endorsement certificates, certifications, Associate of Arts, and Associate of Applied Science degrees.

Core Services

- Academics: PWSC offers the Associate of Arts degree, Associate of Applied Science degrees in Outdoor Leadership and in Technology, Undergraduate Certificate in Outdoor Leadership, and Occupational Endorsement Certificates in Construction Skills, Marine Service Technology, Millwright, Natural Resources Technician, Marine Natural Resource Technician, and Web Engineering.
- Academics: In partnership with the UAA College of Health, PWSC offers an Associate of Applied Science in Nursing degree, which significantly supports the local workforce at Providence Valdez Medical Center.
- Student Success and Access: PWSC created educational pathways that support retention, internship placement, and occupational goal completion and/or transfer. PWSC has embedded opportunities into both the curriculum and campus life activities that strengthen student growth in leadership skills and civic engagement.
- Dual Enrollment: PWSC maintains working relationships with area school districts and across the state to offer dual enrollment education to high school students, providing a pathway to build a transcript of university credit for transfer or completion of an associate degree. PWSC partners with Valdez High School, Glennallen High School, and Cordova High School, as well as rural high schools from around the state.
- Continuing Education and Professional Development: PWSC promotes continuing education and professional development among its faculty by implementing activities following the Quality Matters model, emphasizing a team approach to support both full-time and adjunct faculty.
- Continuing Education and Professional Development: PWSC offers 500-level professional development courses to Alaska school district educators, including instruction about classroom educational technology, National Center for Construction Education and Research (NCCER) core curriculum for teachers and technical instructors, environmental science for teachers, and computer science courses for rural students and faculty.
- Community Partnerships: Through outreach and engagement, PWSC plays an integral role in developing and sustaining the communities of Valdez, Cordova, and Glennallen. PWSC's partnerships have made PWSC an important voice in the community, one that others look to for assistance and advice.
- Community Partnerships: PWSC partners with industry leaders such as Alyeska Pipeline Service Company, Providence Valdez Medical Center and Cordova Medical Center, Ahtna Inc., Copper River Native Association, Valdez Native Tribe, Native Village of Eyak, Chugachmiut Native Association, and the US Coast Guard.
- Community Partnerships: PWSC offers valuable resources to the community to learn and engage with others, including the Health and Fitness Center, Maxine and Jesse Whitney Museum, Valdez Theatre Conference, and an array of educational opportunities, outreach programs, classes, and hosted events.
- Community Partnerships: PWSC provides Oil Spill Response training for fishing vessel fleets in cooperation with Alyeska Pipeline Service Company in locations throughout the Gulf of Alaska, ensuring that federally mandated training requirements are met for the oil transportation industry.

Major Component Accomplishments in 2023

See University of Alaska Anchorage Results Delivery Unit.

Key Component Challenges

See University of Alaska Anchorage Results Delivery Unit.

Significant Changes in Results to be Delivered in FY2025

See University of Alaska Anchorage Results Delivery Unit.

Statutory and Regulatory Authority

No statutes and regulations.

Contact Information
<p>Contact: Michelle Rizk, Vice President, University Relations Phone: (907) 450-8187 E-mail: marizk@alaska.edu</p>

Prince William Sound College Personal Services Information				
Authorized Positions			Personal Services Costs	
	<u>FY2024</u> <u>Management</u> <u>Plan</u>	<u>FY2025</u> <u>Governor</u>		
Full-time	31	31	Annual Salaries	0
Part-time	5	5	Premium Pay	0
Nonpermanent	0	0	Annual Benefits	0
			<i>Less % Vacancy Factor</i>	()
			Lump Sum Premium Pay	0
Totals	36	36	Total Personal Services	

Position Classification Summary					
Job Class Title	Anchorage	Fairbanks	Juneau	Others	Total
No personal services.					
Totals	0	0	0	0	0

Component Detail All Funds
University of Alaska

Component: Prince William Sound College (759)
RDU: University of Alaska Anchorage (235)

Non-Formula Component

	FY2023 Actuals	FY2024 Enrolled	FY2024 Authorized	FY2024 Management Plan	FY2025 Governor Adjusted Base	FY2025 Governor	FY2024 Management Plan vs FY2025 Governor		
1000 Personal Services	3,140.9	4,952.9	4,952.9	5,102.3	5,102.3	5,102.3	0.0	0.0%	
2000 Travel	41.6	30.0	30.0	34.0	34.0	34.0	0.0	0.0%	
3000 Services	1,706.7	1,199.8	1,199.8	1,055.0	1,055.0	1,055.0	0.0	0.0%	
4000 Commodities	294.1	232.9	232.9	225.9	225.9	225.9	0.0	0.0%	
5000 Capital Outlay	107.2	45.0	45.0	44.7	44.7	44.7	0.0	0.0%	
7000 Grants, Benefits	257.3	25.0	25.0	25.0	-58.2	-58.2	-83.2	-332.8%	
8000 Miscellaneous	0.0	5.5	5.5	5.5	5.5	5.5	0.0	0.0%	
Totals	5,547.8	6,491.1	6,491.1	6,492.4	6,409.2	6,409.2	-83.2	-1.3%	
Fund Sources:									
1002 Fed Rcpts (Fed)	92.1	800.0	800.0	800.0	800.0	800.0	0.0	0.0%	
1004 Gen Fund (UGF)	2,719.0	2,903.5	2,903.5	2,903.5	2,903.5	2,903.5	0.0	0.0%	
1007 I/A Rcpts (Other)	290.7	177.3	177.3	178.6	178.6	178.6	0.0	0.0%	
1048 Univ Rcpt (DGF)	2,309.4	2,517.1	2,517.1	2,517.1	2,517.1	2,517.1	0.0	0.0%	
1151 VoTech Ed (DGF)	93.6	83.2	83.2	83.2	0.0	0.0	-83.2	-100.0%	
1174 UA I/A (Other)	43.0	10.0	10.0	10.0	10.0	10.0	0.0	0.0%	
Unrestricted General (UGF)	2,719.0	2,903.5	2,903.5	2,903.5	2,903.5	2,903.5	0.0	0.0%	
Designated General (DGF)	2,403.0	2,600.3	2,600.3	2,600.3	2,517.1	2,517.1	-83.2	-3.2%	
Other Funds	333.7	187.3	187.3	188.6	188.6	188.6	0.0	0.0%	
Federal Funds	92.1	800.0	800.0	800.0	800.0	800.0	0.0	0.0%	
Positions:									
Permanent Full Time	40	40	40	31	31	31	0	0.0%	
Permanent Part Time	0	0	0	5	5	5	0	0.0%	
Non Permanent	0	0	0	0	0	0	0	0.0%	

Change Record Detail - Multiple Scenarios with Descriptions
University of Alaska

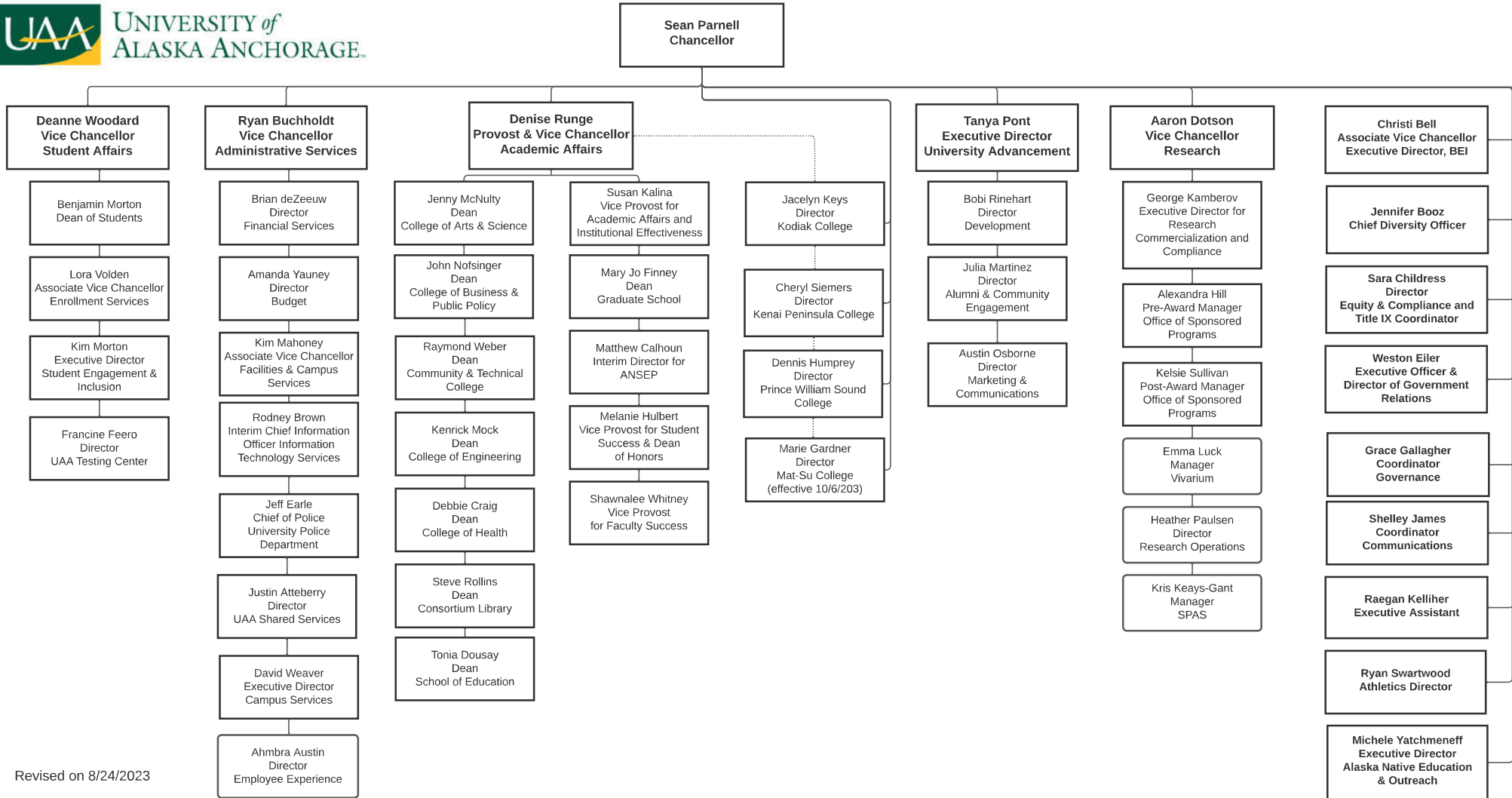
Component: Prince William Sound College (759)
RDU: University of Alaska Anchorage (235)

Scenario/Change Record Title	Trans Type	Totals	Personal Services	Travel	Services	Commodities	Capital Outlay	Grants, Benefits	Miscellaneous	Positions		NP	
										PFT	PPT		
***** Changes From FY2024 Enrolled To FY2024 Authorized *****													
University of Alaska Funding from Alaska TVEP Account Sec57(c) Ch1 SLA2023 P143 L29 (HB39)													
1151 VoTech Ed	Enrol(L)	83.2	83.2	0.0	0.0	0.0	0.0	83.2	0.0	0	0	0	
FY2024 Enrolled													
1002 Fed Rcpts	Enrolled	800.0	6,407.9	4,952.9	30.0	1,199.8	232.9	45.0	-58.2	5.5	40	0	0
1004 Gen Fund		2,903.5											
1007 I/A Rcpts		177.3											
1048 Univ Rcpt		2,517.1											
1174 UA I/A		10.0											
Subtotal		6,491.1	4,952.9	30.0	1,199.8	232.9	45.0	25.0	5.5	40	0	0	
***** Changes From FY2024 Authorized To FY2024 Management Plan *****													
Distribute State Inter-Agency Receipt Authority													
1007 I/A Rcpts	Trin	1.3	1.3	0.0	0.0	1.3	0.0	0.0	0.0	0.0	0	0	0
Distribute State Inter-Agency Receipt authority to better align estimated expenditures in FY2024.													
Anchorage Campus: (\$1.3) Prince William Sound College: \$1.3 Juneau Campus: (\$71.8) Ketchikan Campus: \$71.8													
Align Authority with Anticipated Expenditures													
	LIT	0.0	149.4	4.0	-146.1	-7.0	-0.3	0.0	0.0	0.0	0	0	0
Transfers between expenditure categories that University management and the Board of Regents have deemed necessary to accurately reflect expenditure levels for FY2024.													
Position Adjustments for Anticipated Position Count													
	PosAdj	0.0	0.0	0.0	0.0	0.0	0.0	0.0	0.0	-9	5	0	
Position adjustments deemed necessary to accurately reflect FY2024 Management Plan.													
Subtotal		6,492.4	5,102.3	34.0	1,055.0	225.9	44.7	25.0	5.5	31	5	0	
***** Changes From FY2024 Management Plan To FY2025 Governor Adjusted Base *****													

Change Record Detail - Multiple Scenarios with Descriptions
University of Alaska

Component: Prince William Sound College (759)
RDU: University of Alaska Anchorage (235)

Scenario/Change Record Title	Trans Type	Totals	Personal Services	Travel	Services	Commodities	Capital Outlay	Grants, Benefits	Miscellaneous	Positions		NP
										PFT	PPT	
Reverse University of Alaska Funding from Alaska TVEP Account Sec57(c) Ch1 SLA2023 P143 L29 (HB39)												
1151 VoTech Ed	OTI	-83.2	0.0	0.0	0.0	0.0	0.0	-83.2	0.0	0	0	0
Reversal of FY2024 TVEP distribution.												
Subtotal		6,409.2	5,102.3	34.0	1,055.0	225.9	44.7	-58.2	5.5	31	5	0
***** Changes From FY2025 Governor Adjusted Base To FY2025 Governor *****												
Totals		6,409.2	5,102.3	34.0	1,055.0	225.9	44.7	-58.2	5.5	31	5	0



Personal Services Expenditure Detail
University of Alaska

Component: Prince William Sound College (759)

RDU: University of Alaska Anchorage (235)

Notes:

1. If a position is split, an asterisk (*) will appear in the Split/Count column. If the split position is also counted in the component, two asterisks (**) will appear in the column.
2. "Pool" PCN refers to UA temporary positions, such as adjunct faculty; student employees; and other non-permanent staff. Multiple incumbents may share the same labor pool position number and pooled budget.

PCN	Job Class Title	Location	Time Status	Split/ Count	Employee Class	Benefit Rate	Annual	Annual	Total	UGF
							Budgeted			
620001	Term Asst Professor	Valdez	FT		United Academics BU	30.8%	68,962	21,240	90,202	55,382
620002	Athletics Facs, Ops & Pgms 2	Valdez	PT		PERS - Classified	51.8%	52,212	27,046	79,258	48,663
620004	Term Asst Professor	Valdez	FT		United Academics BU	30.8%	69,853	21,515	91,368	56,098
620005	Stu Svcs Profess 2 (Exempt)	Valdez	FT		APT - Exempt Employees	41.2%	61,274	25,245	86,519	0
620006	Student Svcs Professional 3	Valdez	FT		APT - Exempt Employees	41.2%	68,305	28,142	96,447	59,216
620007	Fiscal Manager 3	Valdez	FT		APT - Exempt Employees	41.2%	93,011	38,321	131,332	80,635
620008	Student Svcs Manager 1	Valdez	PT		APT - Exempt Employees	41.2%	39,631	16,328	55,959	34,358
620010	Fiscal Technician 2	Valdez	FT		PERS - Classified	51.8%	46,356	24,012	70,368	43,205
620017	Fiscal Professional 3	Valdez	FT		APT - Exempt Employees	41.2%	77,773	32,042	109,815	67,424
620019	Assistant Professor	Valdez	FT		United Academics BU	30.8%	70,910	21,840	92,750	56,947
620021	Associate Professor	Valdez	FT		United Academics BU	30.8%	89,863	27,678	117,541	72,167
620023	Student Svcs Professional 2	Valdez	FT		PERS - Classified	51.8%	53,739	27,837	81,576	50,086
620027	Administrative Management 3	Valdez	FT		APT - Exempt Employees	41.2%	84,996	35,018	120,014	73,686
620028	Administrative Management 2	Valdez	FT		APT - Exempt Employees	41.2%	54,257	22,354	76,611	39,041
620031	Assistant Professor	Valdez	FT		United Academics BU	30.8%	64,141	19,755	83,896	51,511
620035	Director (Admin)	Valdez	FT		Sr. Administrator	25.1%	138,020	34,643	172,663	106,011
620036	Admin Specialist 1	Valdez	FT		PERS - Classified	51.8%	44,179	22,885	67,064	41,176
620037	Training & Development 3	Valdez	PT		PERS - Classified	51.8%	28,553	14,790	43,343	0
620038	Maint Service Worker IV (MSW4)	Valdez	FT		AHECTE- Labor Trades & Crafts	46.0%	53,583	24,648	78,231	48,032
620039	Maint Service Workr III (MSW3)	Valdez	FT		AHECTE- Labor Trades & Crafts	46.0%	34,511	15,875	50,386	30,936
620040	Fac Svcs-MO&U Supervisor 4	Valdez	FT		APT - Exempt Employees	41.2%	77,773	32,042	109,815	67,424
620041	Maint Service Worker IV (MSW4)	Valdez	FT		AHECTE- Labor Trades & Crafts	46.0%	52,483	24,142	76,625	47,046
620042	Fiscal Professional 2	Valdez	FT		APT - Exempt Employees	41.2%	49,209	20,274	69,483	42,661
620047	Instructional Designer 3	Valdez	FT		APT - Exempt Employees	41.2%	75,464	31,091	106,555	65,422
620048	Admin Generalist 4	Valdez	FT		PERS - Classified	51.8%	54,349	28,153	82,502	50,654
620049	Fiscal Technician 2	Valdez	FT		PERS - Classified	51.8%	46,356	24,012	70,368	43,205
620050	Professor	Valdez	FT		United Academics BU	30.8%	86,244	26,563	112,807	69,261
620053	Term Asst Professor	Valdez	FT		United Academics BU	30.8%	56,645	17,447	74,092	45,491
620055	Admin Generalist 3	Valdez	FT		PERS - Classified	51.8%	55,995	29,005	85,000	52,188
620059	Term Asst Professor	Valdez	FT		United Academics BU	30.8%	88,179	27,159	115,338	70,815
620062	Communications Specialist 4	Valdez	FT		APT - Exempt Employees	41.2%	60,565	24,953	85,518	52,506
620063	Training & Development 4	Valdez	FT		APT - Exempt Employees	41.2%	80,103	33,002	113,105	17,361

Personal Services Expenditure Detail
University of Alaska

Component: Prince William Sound College (759)

RDU: University of Alaska Anchorage (235)

Notes:

1. If a position is split, an asterisk (*) will appear in the Split/Count column. If the split position is also counted in the component, two asterisks (**) will appear in the column.
2. "Pool" PCN refers to UA temporary positions, such as adjunct faculty; student employees; and other non-permanent staff. Multiple incumbents may share the same labor pool position number and pooled budget.

PCN	Job Class Title	Location	Time Status	Split/Count	Employee Class	Benefit Rate	Annual Budgeted Salary	Annual Benefits	Total Costs	UGF Estimate	
620064	Instructional Designer 3	Valdez	FT		APT - Exempt Employees	41.2%	60,910	25,095	86,005	52,805	
620065	Student Svcs Professional 2	Valdez	PT		PERS - Classified	51.8%	44,144	22,867	67,011	41,143	
620066	Admin Specialist 3	Valdez	PT		APT - Exempt Employees	41.2%	59,152	24,371	83,523	51,281	
620067	Athletics Facs, Ops & Pgms 1	Valdez	FT		PERS - Classified	51.8%	47,296	24,499	71,795	44,081	
Pool	UA Labor Pool	Valdez	PT		Labor Pool	0.0%	1,620,751		1,620,751	757,783	
Total Position Costs							3,909,747	915,891	4,825,638	2,585,700	
							Federal Receipts (1002)		396,873		
							General Fund Receipts (1004)		2,755,583		
							Interagency Receipts (1007)		88,602		
							University Receipts (1048)		1,861,273		
							UA Intra-agency Transfers (1174)		0		
							UA Funding		5,102,330		

Full Time Positions:	31
Part Time Positions:	5
Positions in Component:	36