

State of Alaska FY2025 Governor's Operating Budget

University of Alaska Anchorage Campus Component Budget Summary

Component: Anchorage Campus

Contribution to Department's Mission

The Anchorage campus is comprised of six academic colleges and schools, offering everything from entry-level technical and professional certificates through associates, bachelor's, and doctoral degrees; and including streamlined pathways from UAA's four community campuses. Through UAA's comprehensive curriculum, students learn practical job skills and develop a strong educational foundation that prepares them for graduate or professional schools and the workplace.

The UAA/APU Consortium Library, located on the Anchorage campus, serves the students, faculty, and staff of UAA and Alaska Pacific University (APU) campuses and the state of Alaska, housing special collections. The Anchorage Middle College School, also on the Anchorage campus, serves junior and senior high school students from the Anchorage School District who are earning college credit while completing the requirements for a high school diploma.

Core Services

- The Anchorage campus transforms lives by providing early access to higher education through programs such as the Alaska Middle College School, the Summer Aviation Academy, Certified Nurse Aide courses, and the ANSEP Acceleration Academy.
- The Anchorage campus transforms lives, communities, and the state, building Alaska's workforce through programs in the high demand industries of Administration and Finance; Aviation; Construction; Fisheries and Marine Science; Health; Hospitality and Tourism; Information Technology; Mining; Oil and Gas; and Teacher Education.
- The Anchorage campus provides well-rounded associate and bachelor's education through a strong foundation in the liberal arts and sciences, and an institutional focus on the core competencies: Effective Communication; Creative and Critical Thinking; Intercultural Fluency; and Personal, Professional, and Community Responsibility.
- The Anchorage campus transforms lives through graduate programming that meets the workforce and professional needs of the region and the state.
- The Anchorage campus transforms its communities through continuing education and professional development: The Office of Professional and Continuing Education (PACE), the Business Enterprise Institute, and the College of Health provide continuing education opportunities for working professionals to expand and update their skills and knowledge.
- The Anchorage campus is committed to creating a welcoming and inclusive environment by integrating diversity, equity and inclusion into all aspects of the student experience and the university's work.
- The Anchorage campus engages with and transforms its communities and the state through mutually beneficial partnerships with government, non-profit organizations, and private industry in Anchorage and across Alaska. These partnerships expand on-the-job training and experiential learning opportunities for UAA students.
- The Anchorage campus is home to a number of centers and institutes devoted to special concerns and opportunities associated with northern populations, and include: the Institute of Social and Economic Research, the UAA Justice Center, the Institute for Circumpolar Health Studies, the Alaska Center for Conservation Science, the Environment and Natural Resources Institute, and the Alaska Center for Rural Health.
- UAA transforms its communities and the state through applied research, supported through the Office of Research, and largely related to addressing Alaska-specific or northern issues.

Major Component Accomplishments in 2023

See University of Alaska Anchorage Results Delivery Unit.

Key Component Challenges

See University of Alaska Anchorage Results Delivery Unit.

Significant Changes in Results to be Delivered in FY2025

See University of Alaska Anchorage Results Delivery Unit.

Statutory and Regulatory Authority

No statutes and regulations.

Contact Information
<p>Contact: Michelle Rizk, Vice President, University Relations Phone: (907) 450-8187 E-mail: marizk@alaska.edu</p>

Anchorage Campus Personal Services Information				
Authorized Positions			Personal Services Costs	
	<u>FY2024</u> <u>Management</u> <u>Plan</u>	<u>FY2025</u> <u>Governor</u>		
Full-time	1170	1170	Annual Salaries	0
Part-time	19	19	Premium Pay	0
Nonpermanent	0	0	Annual Benefits	0
			<i>Less % Vacancy Factor</i>	()
			Lump Sum Premium Pay	0
Totals	1189	1189	Total Personal Services	

Position Classification Summary					
Job Class Title	Anchorage	Fairbanks	Juneau	Others	Total
No personal services.					
Totals	0	0	0	0	0

Component Detail All Funds
University of Alaska

Component: Anchorage Campus (753)
RDU: University of Alaska Anchorage (235)

Non-Formula Component

	FY2023 Actuals	FY2024 Enrolled	FY2024 Authorized	FY2024 Management Plan	FY2025 Governor Adjusted Base	FY2025 Governor	FY2024 Management Plan vs FY2025 Governor		
1000 Personal Services	145,268.1	146,244.9	146,244.9	143,234.7	143,234.7	143,234.7	0.0	0.0%	
2000 Travel	3,719.3	3,261.9	3,261.9	4,332.3	4,332.3	4,332.3	0.0	0.0%	
3000 Services	66,292.7	67,940.6	69,519.2	69,226.9	65,505.8	65,505.8	-3,721.1	-5.4%	
4000 Commodities	12,580.0	8,639.5	8,639.5	8,920.0	8,920.0	8,920.0	0.0	0.0%	
5000 Capital Outlay	9,424.1	5,890.6	5,890.6	8,199.4	8,199.4	8,199.4	0.0	0.0%	
7000 Grants, Benefits	11,261.8	16,362.3	16,362.3	16,662.8	14,934.8	14,934.8	-1,728.0	-10.4%	
8000 Miscellaneous	3,146.3	4,231.3	4,231.3	3,343.8	5,406.3	5,606.3	2,262.5	67.7%	
Totals	251,692.3	252,571.1	254,149.7	253,919.9	250,533.3	250,733.3	-3,186.6	-1.3%	
Fund Sources:									
1002 Fed Rcpts (Fed)	29,254.2	29,895.2	29,895.2	29,895.2	29,895.2	29,895.2	0.0	0.0%	
1003 G/F Match (UGF)	19.8	19.8	19.8	19.8	19.8	19.8	0.0	0.0%	
1004 Gen Fund (UGF)	93,024.3	96,197.3	97,775.9	97,862.7	96,284.1	96,284.1	-1,578.6	-1.6%	
1007 I/A Rcpts (Other)	11,614.7	5,826.2	5,826.2	5,824.9	5,824.9	5,824.9	0.0	0.0%	
1037 GF/MH (UGF)	726.7	905.8	905.8	905.8	955.8	955.8	50.0	5.5%	
1048 Univ Rcpt (DGF)	90,637.8	106,306.2	106,306.2	106,306.2	106,306.2	106,306.2	0.0	0.0%	
1061 CIP Rcpts (Other)	953.3	400.0	400.0	400.0	400.0	400.0	0.0	0.0%	
1092 MHTAAR (Other)	1,456.7	2,092.5	2,092.5	2,092.5	1,962.5	2,162.5	70.0	3.3%	
1151 VoTech Ed (DGF)	2,102.4	2,043.3	2,043.3	1,728.0	0.0	0.0	-1,728.0	-100.0%	
1174 UA I/A (Other)	20,117.6	8,884.8	8,884.8	8,884.8	8,884.8	8,884.8	0.0	0.0%	
1265 COVID Fed (Fed)	1,784.8	0.0	0.0	0.0	0.0	0.0	0.0	0.0%	
Unrestricted General (UGF)	93,770.8	97,122.9	98,701.5	98,788.3	97,259.7	97,259.7	-1,528.6	-1.5%	
Designated General (DGF)	92,740.2	108,349.5	108,349.5	108,034.2	106,306.2	106,306.2	-1,728.0	-1.6%	
Other Funds	34,142.3	17,203.5	17,203.5	17,202.2	17,072.2	17,272.2	70.0	0.4%	
Federal Funds	31,039.0	29,895.2	29,895.2	29,895.2	29,895.2	29,895.2	0.0	0.0%	
Positions:									
Permanent Full Time	1,195	1,195	1,195	1,170	1,170	1,170	0	0.0%	
Permanent Part Time	37	37	37	19	19	19	0	0.0%	
Non Permanent	0	0	0	0	0	0	0	0.0%	

Change Record Detail - Multiple Scenarios with Descriptions
University of Alaska

Component: Anchorage Campus (753)
RDU: University of Alaska Anchorage (235)

Scenario/Change Record Title	Trans Type	Totals	Personal Services	Travel	Services	Commodities	Capital Outlay	Grants, Benefits	Miscellaneous	Positions		NP
										PFT	PPT	
***** Changes From FY2024 Enrolled To FY2024 Authorized *****												
University of Alaska Funding from Alaska TVEP Account Sec57(c) Ch1 SLA2023 P143 L29 (HB39)												
1151 VoTech Ed	Enrol(L)	2,043.3	0.0	0.0	0.0	0.0	0.0	2,043.3	0.0	0	0	0
FY2024 Enrolled												
1002 Fed Rcpts	Enrolled	29,895.2	146,244.9	3,261.9	67,940.6	8,639.5	5,890.6	14,319.0	4,231.3	1,195	37	0
1003 G/F Match		19.8										
1004 Gen Fund		96,197.3										
1007 I/A Rcpts		5,826.2										
1037 GF/MH		905.8										
1048 Univ Rcpt		106,306.2										
1061 CIP Rcpts		400.0										
1092 MHTAAR		2,092.5										
1174 UA I/A		8,884.8										
Mariculture Research and Development Sec74 Ch11 SLA2022 P185 L22 (HB281) (FY23-FY24)												
1004 Gen Fund	CarryFwd	216.1	0.0	0.0	216.1	0.0	0.0	0.0	0.0	0	0	0
Record estimated carryforward of multi-year appropriation.												
Critical Minerals and Rare Earth Elements Research and Development Sec74 Ch11 SLA2022 P185 L18 (HB281) (FY23-FY24)												
1004 Gen Fund	CarryFwd	1,156.5	0.0	0.0	1,156.5	0.0	0.0	0.0	0.0	0	0	0
Record estimated carryforward of multi-year appropriation.												
University of Alaska Drone Program Sec74 Ch11 SLA2022 P185 L7 (HB281) (FY23-FY24)												
1004 Gen Fund	CarryFwd	206.0	0.0	0.0	206.0	0.0	0.0	0.0	0.0	0	0	0
Record estimated carryforward of multi-year appropriation.												
Subtotal		254,149.7	146,244.9	3,261.9	69,519.2	8,639.5	5,890.6	16,362.3	4,231.3	1,195	37	0
***** Changes From FY2024 Authorized To FY2024 Management Plan *****												
Distribute State Inter-Agency Receipt Authority												
1007 I/A Rcpts	Trout	-1.3	0.0	0.0	-1.3	0.0	0.0	0.0	0.0	0	0	0

Change Record Detail - Multiple Scenarios with Descriptions
University of Alaska

Component: Anchorage Campus (753)
RDU: University of Alaska Anchorage (235)

Scenario/Change Record Title	Trans Type	Totals	Personal Services	Travel	Services	Commodities	Capital Outlay	Grants, Benefits	Miscellaneous	Positions		NP
										PFT	PPT	
Distribute State Inter-Agency Receipt authority to better align estimated expenditures in FY2024.												
Anchorage Campus: (\$1.3)												
Prince William Sound College: \$1.3												
Juneau Campus: (\$71.8)												
Ketchikan Campus: \$71.8												
Transfer Technical Vocational Education Program Funds to Align with Distributions												
1151 VoTech Ed	Trout	-315.3	0.0	0.0	-315.3	0.0	0.0	0.0	0.0	0	0	0
Transfers between allocations to reallocate Technical Vocational Education Program funding to FY2024 programs approved by the University of Alaska Workforce Development Committee.												
Budget Reductions/Additions – Systemwide: (\$96.2)												
Systemwide Services: (\$22.1)												
Anchorage Campus: (\$315.3)												
Kenai Peninsula College: \$137.5												
Kodiak College: \$201.9												
Matanuska-Susitna College: (\$68.0)												
Fairbanks Campus: \$172.3												
Bristol Bay Campus: \$11.4												
Northwest Campus: \$19.5												
University of Alaska Fairbanks Community Technical College: (\$205.5)												
Juneau Campus: (\$90.7)												
Ketchikan Campus: \$234.0												
Sitka Campus: \$21.2												
Transfer General Funds for Shared Services												
1004 Gen Fund	Trin	87.2	0.0	0.0	87.2	0.0	0.0	0.0	0.0	0	0	0
Reallocate general funds from the System Office to the major administrative unit to fund allocated costs associated with FY2024 compensation increases for employees in human resources and procurement shared services.												
Systemwide Services: (\$232.6)												
Anchorage Campus: \$87.2												
Fairbanks Campus: \$131.0												
Juneau Campus: \$14.4												
Transfer General Funds for FY2024 Compensation Increases												

Change Record Detail - Multiple Scenarios with Descriptions
University of Alaska

Component: Anchorage Campus (753)
RDU: University of Alaska Anchorage (235)

Scenario/Change Record Title	Trans Type	Totals	Personal Services	Travel	Services	Commodities	Capital Outlay	Grants, Benefits	Miscellaneous	Positions		NP
										PFT	PPT	
1004 Gen Fund	Trout	-0.4	0.0	0.0	-0.4	0.0	0.0	0.0	0.0	0	0	0
Minor general funds rounding adjustments were necessary between allocations to implement the FY2024 compensation increases.												
Systemwide Services: (\$.2)												
Office of Information Technology: (\$0.1)												
Anchorage Campus: (\$0.4)												
Fairbanks Campus: \$0.6												
University of Alaska Fairbanks Community Technical College: (\$0.1)												
Juneau Campus: \$0.1												
Ketchikan Campus: \$0.1												
Align Authority with Anticipated Expenditures												
	LIT	0.0	-3,010.2	1,070.4	-62.5	280.5	2,308.8	300.5	-887.5	0	0	0
Transfers between expenditure categories that University management and the Board of Regents have deemed necessary to accurately reflect expenditure levels for FY2024.												
Position Adjustments for Anticipated Position Count												
	PosAdj	0.0	0.0	0.0	0.0	0.0	0.0	0.0	0.0	-25	-18	0
Position adjustments deemed necessary to accurately reflect FY2024 Management Plan.												
Subtotal		253,919.9	143,234.7	4,332.3	69,226.9	8,920.0	8,199.4	16,662.8	3,343.8	1,170	19	0
***** Changes From FY2024 Management Plan To FY2025 Governor Adjusted Base *****												
Reverse University of Alaska Funding from Alaska TVEP Account Sec57(c) Ch1 SLA2023 P143 L29 (HB39)												
	OTI	-1,728.0	0.0	0.0	0.0	0.0	0.0	-1,728.0	0.0	0	0	0
1151 VoTech Ed		-1,728.0										
Reverse Technical Vocational Education Program funding in FY2024.												
Reverse Mariculture Research and Development Sec74 Ch11 SLA2022 P185 L22 (HB281) (FY23-FY24)												
	OTI	-216.1	0.0	0.0	-216.1	0.0	0.0	0.0	0.0	0	0	0
1004 Gen Fund		-216.1										
Reverse recorded estimated carryforward of multi-year appropriation.												
Reverse Critical Minerals and Rare Earth Elements Research and Development Sec74 Ch11 SLA2022 P185 L18 (HB281) (FY23-FY2)												
	OTI	-1,156.5	0.0	0.0	-1,156.5	0.0	0.0	0.0	0.0	0	0	0
1004 Gen Fund		-1,156.5										

Change Record Detail - Multiple Scenarios with Descriptions
University of Alaska

Component: Anchorage Campus (753)
RDU: University of Alaska Anchorage (235)

Scenario/Change Record Title	Trans Type	Totals	Personal Services	Travel	Services	Commodities	Capital Outlay	Grants, Benefits	Miscellaneous	Positions		NP
										PFT	PPT	
Reverse recorded estimated carryforward of multi-year appropriation.												
Reverse University of Alaska Drone Program Sec74 Ch11 SLA2022 P185 L7 (HB281) (FY23-FY24)												
	OTI	-206.0	0.0	0.0	-206.0	0.0	0.0	0.0	0.0	0	0	0
1004 Gen Fund		-206.0										
Reverse recorded estimated carryforward of multi-year appropriation.												
Reverse MH Trust: Alaska Center for Rural Health and Workforce (FY23-FY25)												
	OTI	-150.0	0.0	0.0	-150.0	0.0	0.0	0.0	0.0	0	0	0
1092 MHTAAR		-150.0										
The Alaska Center for Rural Health and Workforce (ACRHW) is a center located within the College of Health at the University of Alaska Anchorage and is focused on supporting new and existing healthcare workforce related initiatives. ACRHW will implement a Crisis Now Support Program that will focus on organizational health and wellness within Trust funded agencies that are implementing new crisis stabilization services. The idea is to support the existing workforce by meeting their wellness needs and keeping them employed. Turnover during the last two years of the pandemic has been high, so it is imperative to keep the existing workforce healthy and well.												
MH Trust: Alaska Center for Rural Health and Workforce (FY24-FY25)												
	IncT	150.0	0.0	0.0	0.0	0.0	0.0	0.0	150.0	0	0	0
1092 MHTAAR		150.0										
The Alaska Center for Rural Health and Workforce (ACRHW) is a center located within the College of Health at the University of Alaska Anchorage and is focused on supporting new and existing healthcare workforce related initiatives. ACRHW will implement a Crisis Now Support Program that will focus on organizational health and wellness within Trust funded agencies that are implementing new crisis stabilization services. The idea is to support the existing workforce by meeting their wellness needs and keeping them employed. Turnover during the last two years of the pandemic has been high, so it is imperative to keep the existing workforce healthy and well.												
Reverse MH Trust: Beneficiary Population Health Data (FY24-FY28)												
	OTI	-50.0	0.0	0.0	-50.0	0.0	0.0	0.0	0.0	0	0	0
1092 MHTAAR		-50.0										
The intent of the Beneficiary Population Health Data project is to develop and pilot alternative methods of determining Trust beneficiary-related prevalence and system utilization analytics to assist in the forecasting of Trust beneficiary needs. This project will explore the use of Medicaid and third-party insurance data, as well as other potential data sources, to identify and analyze Alaska-specific data. Where possible data linkages and data analytics will be used in the implementation, monitoring, and evaluation of programs, policy, and funding advocacy and decision-making.												
MH Trust: Beneficiary Population Health Data (FY24-FY28)												
	IncT	50.0	0.0	0.0	0.0	0.0	0.0	0.0	50.0	0	0	0
1092 MHTAAR		50.0										

Change Record Detail - Multiple Scenarios with Descriptions
University of Alaska

Component: Anchorage Campus (753)
RDU: University of Alaska Anchorage (235)

Scenario/Change Record Title	Trans Type	Totals	Personal Services	Travel	Services	Commodities	Capital Outlay	Grants, Benefits	Miscellaneous	Positions		NP
										PFT	PPT	
<p>The intent of the Beneficiary Population Health Data project is to develop and pilot alternative methods of determining Trust beneficiary-related prevalence and system utilization analytics to assist in the forecasting of Trust beneficiary needs. This project will explore the use of Medicaid and third-party insurance data, as well as other potential data sources, to identify and analyze Alaska-specific data. Where possible data linkages and data analytics will be used in the implementation, monitoring, and evaluation of programs, policy, and funding advocacy and decision-making.</p>												
Reverse MH Trust: Traumatic and Acquired Brain Injury (TABI) Advisory Council Staff (FY22-FY25)												
1092 MHTAAR	OTI	-105.0	0.0	0.0	-105.0	0.0	0.0	0.0	0.0	0	0	0
<p>This project supports staff to lead and maintain the Alaska Traumatic and Acquired Brain Injury (TABI) Advisory Council in coordination with the Trust, other State agencies, partners, beneficiaries, and other stakeholders. Work performed by staff includes gathering data for reporting, coordination of advocacy and planning, and preparing ongoing grant progress reports. Staff will identify ways to maximize other State and federal funding opportunities for Mental Health Trust Authority Authorized Receipts (MHTAAR) projects and to recommend effective use of available dollars. In addition, staff act as liaison with the other beneficiary boards, including participating in the development of State plans, working on collaborative projects, and other duties. Outcomes and reporting requirements are negotiated with the Trust annually.</p>												
MH Trust: Brain Injury Council of Alaska Staff (FY22-FY25)												
1092 MHTAAR	IncT	105.0	0.0	0.0	0.0	0.0	0.0	0.0	105.0	0	0	0
<p>This project supports staff to lead and maintain the Alaska Traumatic and Acquired Brain Injury (TABI) Advisory Council in coordination with the Trust, other state agencies, partners, beneficiaries, and other stakeholders. Work performed by staff includes gathering data for reporting, coordination of advocacy and planning, and preparing ongoing grant progress reports. Staff will identify ways to maximize other State and federal funding opportunities for Mental Health Trust Authority Authorized Receipts (MHTAAR) projects and to recommend effective use of available dollars. In addition, staff act as liaison with the other beneficiary boards, including participating in the development of State plans, working on collaborative projects, and other duties. Outcomes and reporting requirements are negotiated with the Trust annually.</p>												
Reverse MH Trust: The Alaska Training Cooperative (FY14-FY25)												
1092 MHTAAR	OTI	-835.0	0.0	0.0	-835.0	0.0	0.0	0.0	0.0	0	0	0
<p>The Alaska Training Cooperative (AKTC) will promote career development opportunities for non-degreed professionals, direct service workers, supervisors, and professionals in the behavioral health, home and community-based, and long-term care support services working with Alaska Mental Health Trust Authority beneficiaries. Strategies include technical assistance and training, which is accessible and coordinated and available in rural Alaskan communities by blending evidence-based practices with traditional wisdom. The AKTC will collaborate with other training entities, document, and report training data and when needed, respond to Trust staff and provider requests for additional training related to Medicaid expansion, reform, and redesign, as well as Criminal Justice Reinvestment.</p>												
MH Trust: The Alaska Training Cooperative (FY14-FY25)												
1092 MHTAAR	IncT	785.0	0.0	0.0	0.0	0.0	0.0	0.0	785.0	0	0	0
<p>The Alaska Training Cooperative (AKTC) will promote career development opportunities for non-degreed professionals, direct service workers, supervisors, and</p>												

Change Record Detail - Multiple Scenarios with Descriptions
University of Alaska

Component: Anchorage Campus (753)

RDU: University of Alaska Anchorage (235)

Scenario/Change Record Title	Trans Type	Totals	Personal Services	Travel	Services	Commodities	Capital Outlay	Grants, Benefits	Miscellaneous	Positions		
										PFT	PPT	NP
professionals in the behavioral health, home and community-based, and long-term care support services working with Alaska Mental Health Trust Authority beneficiaries. Strategies include technical assistance and training, which is accessible and coordinated and available in rural Alaskan communities by blending evidence-based practices with traditional wisdom. The AKTC will collaborate with other training entities, document, and report training data and when needed, respond to Trust staff and provider requests for additional training related to Medicaid expansion, reform, and redesign, as well as Criminal Justice Reinvestment.												
Reverse MH Trust: The Alaska Training Cooperative (FY14-FY25)												
1037 GF/MH	OTI	-100.0	0.0	0.0	-100.0	0.0	0.0	0.0	0.0	0	0	0
The Alaska Training Cooperative (AKTC) will promote career development opportunities for non-degreed professionals, direct service workers, supervisors, and professionals in the behavioral health, home and community-based, and long-term care support services working with Alaska Mental Health Trust Authority beneficiaries. Strategies include technical assistance and training, which is accessible and coordinated and available in rural Alaskan communities by blending evidence-based practices with traditional wisdom. The AKTC will collaborate with other training entities, document, and report training data and when needed, respond to Trust staff and provider requests for additional training related to Medicaid expansion, reform, and redesign, as well as Criminal Justice Reinvestment.												
Reverse MH Trust: The Alaska Training Cooperative (FY14-FY25)												
1037 GF/MH	OTI	-50.0	0.0	0.0	-50.0	0.0	0.0	0.0	0.0	0	0	0
The Alaska Training Cooperative (AKTC) will promote career development opportunities for non-degreed professionals, direct service workers, supervisors, and professionals in the behavioral health, home and community-based, and long-term care support services working with Alaska Mental Health Trust Authority beneficiaries. Strategies include technical assistance and training, which is accessible and coordinated and available in rural Alaskan communities by blending evidence-based practices with traditional wisdom. The AKTC will collaborate with other training entities, document, and report training data and when needed, respond to Trust staff and provider requests for additional training related to Medicaid expansion, reform, and redesign, as well as Criminal Justice Reinvestment.												
MH Trust: The Alaska Training Cooperative (FY14-FY25)												
1037 GF/MH	IncT	200.0	0.0	0.0	0.0	0.0	0.0	0.0	200.0	0	0	0
The Alaska Training Cooperative (AKTC) will promote career development opportunities for non-degreed professionals, direct service workers, supervisors, and professionals in the behavioral health, home and community-based, and long-term care support services working with Alaska Mental Health Trust Authority beneficiaries. Strategies include technical assistance and training, which is accessible and coordinated and available in rural Alaskan communities by blending evidence-based practices with traditional wisdom. The AKTC will collaborate with other training entities, document, and report training data and when needed, respond to Trust staff and provider requests for additional training related to Medicaid expansion, reform, and redesign, as well as Criminal Justice Reinvestment.												
Reverse MH Trust: Specialized Skills and Services Training on Serving Criminal Justice Involved Beneficiaries (FY14-FY25)												
1092 MHTAAR	OTI	-72.5	0.0	0.0	-72.5	0.0	0.0	0.0	0.0	0	0	0
This project coordinates a two-day statewide conference focusing on best-practice community treatment modalities, interventions, and supports for serving offenders in the community with cognitive impairments. The project will be managed by the University of Alaska Anchorage through the Alaska Training Cooperative at the Center for Human Development.												

Change Record Detail - Multiple Scenarios with Descriptions
University of Alaska

Component: Anchorage Campus (753)
RDU: University of Alaska Anchorage (235)

Scenario/Change Record Title	Trans Type	Totals	Personal Services	Travel	Services	Commodities	Capital Outlay	Grants, Benefits	Miscellaneous	Positions		
										PFT	PPT	NP

This project maintains a critical component of the Trust's focus on criminal justice reform by ensuring our state's community behavioral health and developmental disability workforce has the necessary skills and competencies for treating and supporting Trust beneficiary offenders. This strategy increases the safety of the community and direct care providers while minimizing the risk that the offender will be institutionalized within a correctional or psychiatric institution.

MH Trust: Specialized Skills and Services Training on Serving Criminal Justice Involved Beneficiaries (FY14-FY25)

1092 MHTAAR	IncT	72.5	72.5	0.0	0.0	0.0	0.0	0.0	72.5	0	0	0
-------------	------	------	------	-----	-----	-----	-----	-----	------	---	---	---

This project coordinates a two-day statewide conference focusing on best-practice community treatment modalities, interventions, and supports for serving offenders in the community with cognitive impairments. The project will be managed by the University of Alaska Anchorage through the Alaska Training Cooperative at the Center for Human Development.

This project maintains a critical component of the Trust's focus on criminal justice reform by ensuring our state's community behavioral health and developmental disability workforce has the necessary skills and competencies for treating and supporting Trust beneficiary offenders. This strategy increases the safety of the community and direct care providers while minimizing the risk that the offender will be institutionalized within a correctional or psychiatric institution.

Reverse MH Trust: Supported Employment Workforce (FY18-FY25)

1092 MHTAAR	OTI	-100.0	-100.0	0.0	0.0	-100.0	0.0	0.0	0.0	0.0	0	0	0
-------------	-----	--------	--------	-----	-----	--------	-----	-----	-----	-----	---	---	---

The Center for Human Development (CHD) at the University of Alaska Anchorage will continue to expand workforce development and educational opportunities related to Trust Beneficiary Employment and Engagement strategies. A highly trained workforce is critical to ensure access to supported employment and related services as beneficiaries seek competitive integrated employment. CHD will respond to supported employment workforce needs identified in an FY2020 needs assessment.

One aspect of this response will involve adapting and integrating Individual Placement and Supports (IPS) training into the current supported employment curriculum. CHD will also continue to implement a multi-level approach to benefits counseling to ensure service providers have the capacity and skills to assist Trust beneficiaries and their families to fully understand how earned income will affect their benefits as they work towards self-sufficiency. In addition, CHD collaborates and supports a statewide infrastructure that includes training, credentials, and certification for Community Rehabilitation Providers (CRP's) to provide quality employment placement and retention services.

MH Trust: Supported Employment Workforce (FY18-FY25)

1092 MHTAAR	IncT	100.0	100.0	0.0	0.0	0.0	0.0	0.0	100.0	0	0	0
-------------	------	-------	-------	-----	-----	-----	-----	-----	-------	---	---	---

The Center for Human Development (CHD) at the University of Alaska Anchorage will continue to expand workforce development and educational opportunities related to Trust Beneficiary Employment and Engagement strategies. A highly trained workforce is critical to ensure access to supported employment and related services as beneficiaries seek competitive integrated employment. CHD will respond to supported employment workforce needs identified in an FY2020 needs assessment.

One aspect of this response will involve adapting and integrating Individual Placement and Supports (IPS) training into the current supported employment

Change Record Detail - Multiple Scenarios with Descriptions
University of Alaska

Component: Anchorage Campus (753)

RDU: University of Alaska Anchorage (235)

Scenario/Change Record Title	Trans Type	Totals	Personal Services	Travel	Services	Commodities	Capital Outlay	Grants, Benefits	Miscellaneous	Positions		
										PFT	PPT	NP
<p>curriculum. CHD will also continue to implement a multi-level approach to benefits counseling to ensure service providers have the capacity and skills to assist Trust beneficiaries and their families to fully understand how earned income will affect their benefits as they work towards self-sufficiency. In addition, CHD collaborates and supports a statewide infrastructure that includes training, credentials, and certification for Community Rehabilitation Providers (CRP's) to provide quality employment placement and retention services.</p>												
Reverse MH Trust: Microenterprise (FY18-FY27)												
1092 MHTAAR	OTI	-175.0	0.0	0.0	-175.0	0.0	0.0	0.0	0.0	0	0	0
<p>The Trust microenterprise fund has provided beneficiaries with a unique avenue to access startup funding for microenterprises which support individuals with disabilities seeking to start or expand small businesses and increase their own self-sufficiency. Small business development supports broader economic development as well, particularly in rural and remote communities where employment opportunities are limited. The fund was designed to provide an option for beneficiaries that might not be eligible for startup funding assistance through traditional paths including banks, credit unions, and other traditional lending sources. This project provides resources for small business technical assistance and development to provide ongoing support to individuals with a disability establishing small businesses and self-employment. The University of Alaska Anchorage, Center for Human Development will continue to administer these funds in close collaboration with the Trust, State, and community partners.</p> <p>Microenterprise is a component of services developed under the Trust's Beneficiary Employment and Engagement focus area that provides alternative and innovative resources, and greater options for beneficiary self-sufficiency and economic independence.</p>												
MH Trust: Microenterprise (FY18-FY25)												
1092 MHTAAR	IncT	175.0	0.0	0.0	0.0	0.0	0.0	0.0	175.0	0	0	0
<p>The Trust microenterprise fund has provided beneficiaries with a unique avenue to access startup funding for microenterprises which support individuals with disabilities seeking to start or expand small businesses and increase their own self-sufficiency. Small business development supports broader economic development as well, particularly in rural and remote communities where employment opportunities are limited. The fund was designed to provide an option for beneficiaries that might not be eligible for startup funding assistance through traditional paths including banks, credit unions, and other traditional lending sources. This project provides resources for small business technical assistance and development to provide ongoing support to individuals with a disability establishing small businesses and self-employment. The University of Alaska Anchorage, Center for Human Development will continue to administer these funds in close collaboration with the Trust, State, and community partners.</p> <p>Microenterprise is a component of services developed under the Trust's Beneficiary Employment and Engagement focus area that provides alternative and innovative resources, and greater options for beneficiary self-sufficiency and economic independence.</p>												
Reverse MH Trust: Interpersonal Violence Prevention for Beneficiaries (FY14-FY25)												
1092 MHTAAR	OTI	-80.0	0.0	0.0	-80.0	0.0	0.0	0.0	0.0	0	0	0

This project builds community behavioral health provider skills and capacity to assume additional risk and time serving and educating offenders with cognitive impairments by using a train-the-trainer model to deliver a social skills curriculum to Trust beneficiaries. It focuses on building capacity within the provider community to prevent interpersonal violence in the lives of adults with cognitive disabilities. Preventing interpersonal violence provides public protection and keeps

Change Record Detail - Multiple Scenarios with Descriptions
University of Alaska

Component: Anchorage Campus (753)
RDU: University of Alaska Anchorage (235)

Scenario/Change Record Title	Trans Type	Totals	Personal Services	Travel	Services	Commodities	Capital Outlay	Grants, Benefits	Miscellaneous	Positions		
										PFT	PPT	NP
Alaskans safe. On-going clinical technical assistance and support is provided to the trained facilitators on a bi-monthly basis to address issues on delivering the training to beneficiaries and on community capacity building to support beneficiaries to apply what they learn in their everyday lives.												
MH Trust: Interpersonal Violence Prevention for Beneficiaries (FY14-FY25)												
1092 MHTAAR	IncT	80.0	0.0	0.0	0.0	0.0	0.0	0.0	80.0	0	0	0
This project builds community behavioral health provider skills and capacity to assume additional risk and time serving and educating offenders with cognitive impairments by using a train-the-trainer model to deliver a social skills curriculum to Trust beneficiaries. It focuses on building capacity within the provider community to prevent interpersonal violence in the lives of adults with cognitive disabilities. Preventing interpersonal violence provides public protection and keeps Alaskans safe. On-going clinical technical assistance and support is provided to the trained facilitators on a bi-monthly basis to address issues on delivering the training to beneficiaries and on community capacity building to support beneficiaries to apply what they learn in their everyday lives.												
Reverse MH Trust: Beneficiary Employment Technical Assistance and Planning (FY24-FY25)												
1092 MHTAAR	OTI	-200.0	0.0	0.0	-200.0	0.0	0.0	0.0	0.0	0	0	0
The University of Alaska Anchorage, Center for Human Development (CHD) will provide technical assistance and planning support to the Trust and public-private partners towards implementation of key Beneficiary Employment and Engagement (BEE) strategies. BEE strategies promote increased self-sufficiency for Trust beneficiaries through competitive integrated employment. In addition to individual beneficiary outcomes, increased workforce participation supports economic development and reduces reliance on publicly funded programs. CHD will offer the Trust a cross-beneficiary population approach to employment related technical assistance and systems planning.												
The CHD will provide coordination, technical assistance, and information dissemination to promote increased employment for mental health trust beneficiaries. Funds will support personnel costs for training and development coordination, sub contractual hosting of the "Disability Benefits 101" website, and development of an Alaska Accessible Employment Website to house beneficiary employment related resources.												
MH Trust: Beneficiary Employment Technical Assistance and Planning (FY24-FY25)												
1092 MHTAAR	IncT	120.0	0.0	0.0	0.0	0.0	0.0	0.0	120.0	0	0	0
The University of Alaska Anchorage, Center for Human Development (CHD) will provide technical assistance and planning support to the Trust and public-private partners towards implementation of key Beneficiary Employment and Engagement (BEE) strategies. BEE strategies promote increased self-sufficiency for Trust beneficiaries through competitive integrated employment. In addition to individual beneficiary outcomes, increased workforce participation supports economic development and reduces reliance on publicly funded programs. CHD will offer the Trust a cross-beneficiary population approach to employment related technical assistance and systems planning.												
The CHD will provide coordination, technical assistance, and information dissemination to promote increased employment for mental health trust beneficiaries. Funds will support personnel costs for training and development coordination, sub contractual hosting of the "Disability Benefits 101" website, and development of an Alaska Accessible Employment Website to house beneficiary employment related resources.												
Reverse MH Trust: Alaska Area Health Education Centers (FY18-FY25)												
	OTI	-100.0	0.0	0.0	-100.0	0.0	0.0	0.0	0.0	0	0	0

Change Record Detail - Multiple Scenarios with Descriptions
University of Alaska

Component: Anchorage Campus (753)
RDU: University of Alaska Anchorage (235)

Scenario/Change Record Title	Trans Type	Totals	Personal Services	Travel	Services	Commodities	Capital Outlay	Grants, Benefits	Miscellaneous	Positions		
										PFT	PPT	NP

1092 MHTAAR		-100.0											
-------------	--	--------	--	--	--	--	--	--	--	--	--	--	--

Alaska Area Health Education Centers (AHEC) will implement multiple community-based behavioral health day camps that concentrate on behavioral health careers exploration. Locations will include Northwest, Southeast, Yukon-Kuskokwim, and others. There will be additional camps around the state depending on availability of staff and need.

With current Medicaid expansion, reform, and redesign, as well as criminal justice reinvestment efforts, it is critical that Alaska engage and recruit youth into behavioral health occupations. The day camps will engage and educate students on key topics in behavioral health including abuse, neglect, addiction, grief, stress, and mental health while discovering career paths within the field. Students will explore careers including social work, counseling, behavioral health aides, psychologists, psychiatrists, and other positions within the field of behavioral health and social services. The camp will also include student mental health first aid training for students; opportunity to earn dual credit; presentations from local elders, clinicians, substance abuse counselors, and behavioral health aides; tours of local providers and featured discussion panels.

The AHEC was able to secure a Department of Education and Early Development, Carl Perkins Postsecondary Career and Technical Education Implementation grant. This three-year grant will allow the AHEC to operate residential camps in rural communities.

MH Trust: Alaska Area Health Education Centers (FY24-FY25)

	IncT	100.0	0.0	0.0	100.0	0.0	0.0	0.0	0.0	0.0	0	0	0
1092 MHTAAR		100.0											

Alaska Area Health Education Centers (AHEC) will implement multiple community-based behavioral health day camps that concentrate on behavioral health careers exploration. Locations will include Northwest, Southeast, Yukon-Kuskokwim, and others. There will be additional camps around the state depending on availability of staff and need.

With current Medicaid expansion, reform, and redesign, as well as criminal justice reinvestment efforts, it is critical that Alaska engage and recruit youth into behavioral health occupations. The day camps will engage and educate students on key topics in behavioral health including abuse, neglect, addiction, grief, stress, and mental health while discovering career paths within the field. Students will explore careers including social work, counseling, behavioral health aides, psychologists, psychiatrists, and other positions within the field of behavioral health and social services. The camp will also include student mental health first aid training for students; opportunity to earn dual credit; presentations from local elders, clinicians, substance abuse counselors, and behavioral health aides; tours of local providers and featured discussion panels.

The AHEC was able to secure a Department of Education and Early Development, Carl Perkins Postsecondary Career and Technical Education Implementation grant. This three-year grant will allow the AHEC to operate residential camps in rural communities.

Reverse MH Trust: Alaska Justice Information Center (FY18-FY25)

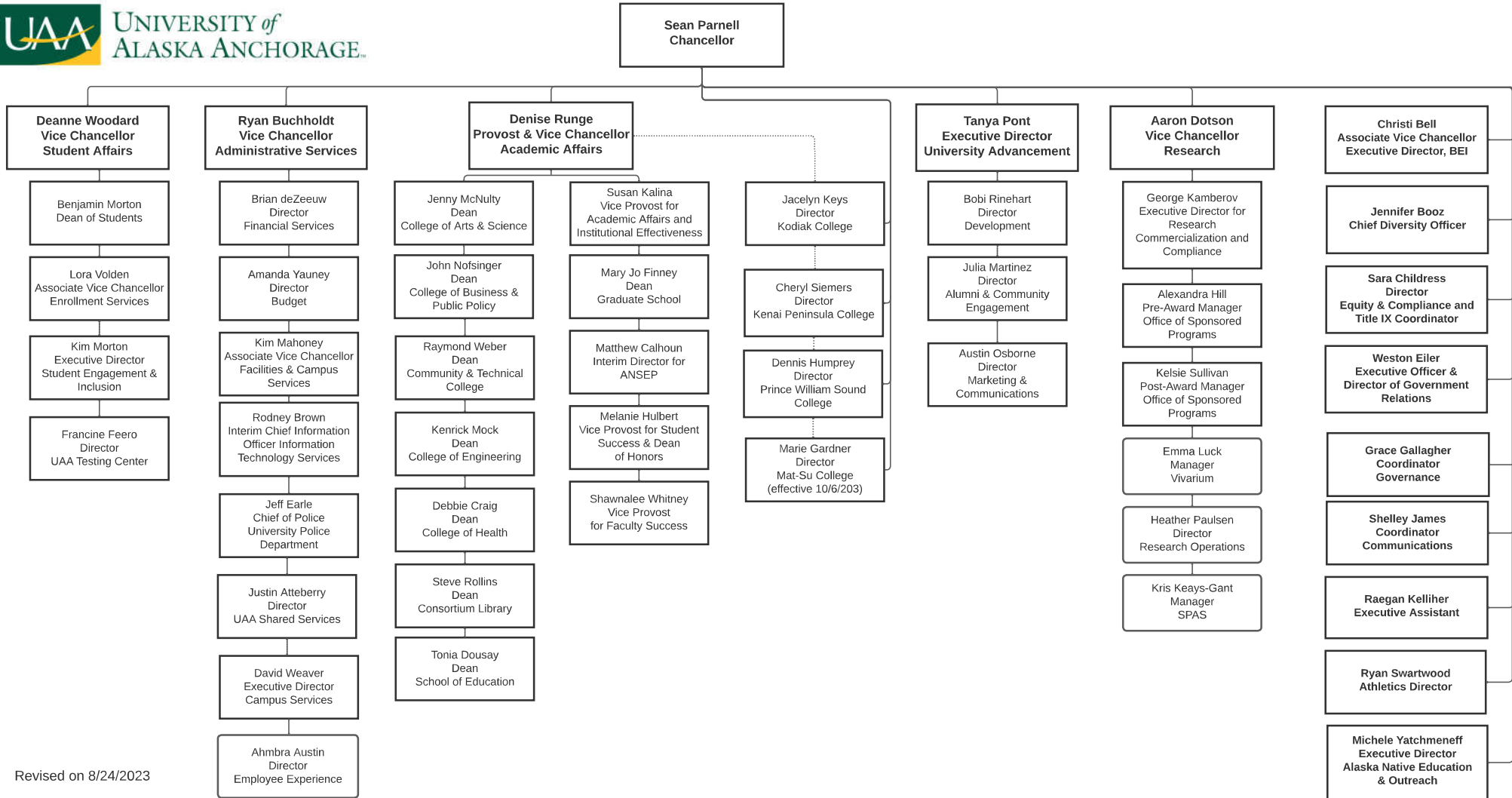
	OTI	-225.0	0.0	0.0	-225.0	0.0	0.0	0.0	0.0	0.0	0	0	0
1092 MHTAAR		-225.0											

Support the continued operations of the Alaska Justice Information Center (AJiC), which collects data from key criminal justice agencies to create an integrated data platform that supports criminal justice research in Alaska. For example, the AJiC will provide (1) reports on the state of the criminal justice system in Alaska, (2) answers to data questions from agencies and legislators, and (3) reports on the status of Trust beneficiaries within the criminal justice system. The AJiC will have the capacity to develop an Alaska-based inventory of best practices for public protection and keeping Alaskans safe, as well as fostering economic

Change Record Detail - Multiple Scenarios with Descriptions
University of Alaska

Component: Anchorage Campus (753)
RDU: University of Alaska Anchorage (235)

Scenario/Change Record Title	Trans Type	Totals	Personal Services	Travel	Services	Commodities	Capital Outlay	Grants, Benefits	Miscellaneous	Positions		NP
										PFT	PPT	
development and self-sufficiency.												
MH Trust: Alaska Justice Information Center (FY23-FY25)												
1092 MHTAAR	IncT	225.0	0.0	0.0	0.0	0.0	0.0	0.0	225.0	0	0	0
Support the continued operations of the Alaska Justice Information Center (AJiC) which collects data from key criminal justice agencies to create an integrated data platform that supports criminal justice research in Alaska. For example, the AJiC will provide (1) reports on the state of the criminal justice system in Alaska, (2) answers to data questions from agencies and legislators, and (3) reports on the status of Trust beneficiaries within the criminal justice system. The AJiC will have the capacity to develop an Alaska-based inventory of best practices for public protection and keeping Alaskans safe as well as fostering economic development and self-sufficiency.												
Subtotal		250,533.3	143,234.7	4,332.3	65,505.8	8,920.0	8,199.4	14,934.8	5,406.3	1,170	19	0
***** Changes From FY2025 Governor Adjusted Base To FY2025 Governor *****												
MH Trust: UAA School Psychology Program												
1092 MHTAAR	IncT	200.0	0.0	0.0	0.0	0.0	0.0	0.0	200.0	0	0	0
The University of Alaska Anchorage (UAA) in partnership with the Trust will support planning and program development for a new School Psychology program intended to address known workforce shortages and help better support beneficiary students in the school setting. UAA has prioritized this project due to the increasing recognition for improved mental health supports in schools as Alaska continues to struggle with a child and youth mental health crisis. Year one (planning) funds for this long-term project aims to help address a state identified workforce needs for school psychologists by developing an instate graduate school psychology training program with the option of distance learning. The funds requested for this partnership grant will support Year 1 program development, including funds for curriculum consultants and to conduct student and school district needs assessment and focus groups with school district personnel and parents of Trust beneficiary children.												
Totals		250,733.3	143,234.7	4,332.3	65,505.8	8,920.0	8,199.4	14,934.8	5,606.3	1,170	19	0



Personal Services Expenditure Detail
University of Alaska

Component: Anchorage Campus (753)

RDU: University of Alaska Anchorage (235)

Notes:

1. If a position is split, an asterisk (*) will appear in the Split/Count column. If the split position is also counted in the component, two asterisks (**) will appear in the column.
2. "Pool" PCN refers to UA temporary positions, such as adjunct faculty; student employees; and other non-permanent staff. Multiple incumbents may share the same labor pool position number and pooled budget.

PCN	Job Class Title	Location	Time Status	Split/ Count	Employee Class	Benefit Rate	Annual	Annual	Total	UGF
							Budgeted Salary	Benefits	Costs	Estimate
300001	Professor	Anchorage	FT		United Academics BU	30.8%	87,816	27,047	114,863	58,964
300015	Professor	Anchorage	FT		United Academics BU	30.8%	90,193	27,779	117,972	60,560
300020	Assistant Professor	Anchorage	FT		United Academics BU	30.8%	97,573	30,052	127,625	65,515
300030	Professor	Anchorage	FT		United Academics BU	30.8%	95,988	29,564	125,552	64,451
300035	Associate Professor	Anchorage	FT		United Academics BU	30.8%	81,955	25,242	107,197	55,028
300040	Term Asst Professor	Anchorage	PT		United Academics BU	30.8%	45,780	12,956	58,736	30,151
300050	Assistant Professor	Anchorage	FT		United Academics BU	30.8%	82,836	25,513	108,349	55,620
300055	Assistant Professor	Anchorage	FT		United Academics BU	30.8%	89,070	27,434	116,504	35,883
300060	Fiscal Manager 2	Anchorage	FT		APT - Exempt Employees	41.2%	87,154	35,907	123,061	63,172
300080	Assistant Professor	Anchorage	FT		United Academics BU	30.8%	67,740	20,864	88,604	45,484
300085	Administrative Professional 3	Anchorage	FT		APT - Exempt Employees	41.2%	99,230	40,883	140,113	71,925
300095	Assistant Professor	Anchorage	FT		United Academics BU	30.8%	70,860	21,825	92,685	47,579
300100	Assistant Professor	Anchorage	FT		United Academics BU	30.8%	62,127	19,135	81,262	41,715
300110	Assistant Professor	Anchorage	FT		United Academics BU	30.8%	75,665	23,305	98,970	50,805
300115	Term Asst Professor	Anchorage	FT		United Academics BU	30.8%	131,500	40,502	172,002	42,972
300120	Associate Professor	Anchorage	FT		United Academics BU	30.8%	87,255	26,875	114,130	58,587
300125	Professor	Anchorage	FT		United Academics BU	30.8%	95,543	29,427	124,970	64,152
300130	Term Instructor	Anchorage	FT		United Academics BU	30.8%	73,216	22,551	95,767	49,160
300145	Associate Professor	Anchorage	FT		United Academics BU	30.8%	79,792	24,576	104,368	10,715
300175	Assistant Professor	Anchorage	FT		United Academics BU	30.8%	82,549	25,425	107,974	55,427
300180	Associate Professor	Anchorage	FT		United Academics BU	30.8%	105,642	32,538	138,180	70,933
300185	Professor	Anchorage	FT		United Academics BU	30.8%	84,564	26,046	110,610	56,780
300195	Assistant Professor	Anchorage	FT		United Academics BU	30.8%	78,174	24,078	102,252	52,489
300210	Professor	Anchorage	FT		United Academics BU	30.8%	94,618	29,142	123,760	63,531
300230	Term Asst Professor	Anchorage	PT		United Academics BU	30.8%	86,414	21,258	107,672	0
300235	Professor	Anchorage	FT		United Academics BU	30.8%	91,630	28,222	119,852	61,524
300240	Term Instructor	Anchorage	PT		United Academics BU	30.8%	84,136	20,697	104,833	0
300245	Term Asst Professor	Anchorage	FT		United Academics BU	30.8%	70,000	21,560	91,560	47,001
300250	Professor	Anchorage	FT		United Academics BU	30.8%	94,453	29,092	123,545	63,420
300255	Professor	Anchorage	FT		United Academics BU	30.8%	82,054	25,273	107,327	55,095
300260	Professor	Anchorage	FT		United Academics BU	30.8%	95,675	29,468	125,143	64,240
300265	Professor	Anchorage	FT		United Academics BU	30.8%	82,120	25,293	107,413	55,139

Personal Services Expenditure Detail
University of Alaska

Component: Anchorage Campus (753)

RDU: University of Alaska Anchorage (235)

Notes:

1. If a position is split, an asterisk (*) will appear in the Split/Count column. If the split position is also counted in the component, two asterisks (**) will appear in the column.
2. "Pool" PCN refers to UA temporary positions, such as adjunct faculty; student employees; and other non-permanent staff. Multiple incumbents may share the same labor pool position number and pooled budget.

PCN	Job Class Title	Location	Time Status	Split/ Count	Employee Class	Benefit Rate	Annual Budgeted Salary	Annual Benefits	Total Costs	UGF Estimate
300270	Assistant Professor	Anchorage	FT		United Academics BU	30.8%	87,304	26,890	114,194	58,620
300275	Professor	Anchorage	FT		United Academics BU	30.8%	96,368	29,681	126,049	64,706
300280	Assistant Professor	Anchorage	FT		United Academics BU	30.8%	74,278	22,878	97,156	49,874
300295	Associate Professor	Anchorage	FT		United Academics BU	30.8%	84,993	26,178	111,171	57,068
300305	Director (Academic-Faculty)	Anchorage	FT		Non-Represented Faculty	25.1%	72,058	18,087	90,145	46,275
300315	Term Instructor	Anchorage	FT		United Academics BU	30.8%	76,800	23,654	100,454	51,567
300320	Professor	Anchorage	FT		United Academics BU	30.8%	138,287	42,592	180,879	92,852
300325	Professor	Anchorage	FT		United Academics BU	30.8%	109,593	33,755	143,348	73,586
300330	Professor	Anchorage	FT		United Academics BU	30.8%	70,299	21,652	91,951	47,202
300345	Assistant Professor	Anchorage	FT		United Academics BU	30.8%	79,247	24,408	103,655	53,210
300360	Admin Generalist 3	Anchorage	FT		PERS - Classified	51.8%	52,490	27,190	79,680	40,903
300370	Training & Development 2	Anchorage	FT		PERS - Classified	51.8%	44,100	22,844	66,944	0
300375	Admin Generalist 4	Anchorage	FT		PERS - Classified	51.8%	47,980	24,854	72,834	37,388
300380	Fiscal Technician 3	Anchorage	FT		PERS - Classified	51.8%	55,717	28,861	84,578	43,417
300385	Admin Specialist 4	Anchorage	FT		APT - Exempt Employees	41.2%	42,220	17,395	59,615	0
300390	Training & Development 5	Anchorage	FT		APT - Exempt Employees	41.2%	77,300	31,848	109,148	56,029
300395	Administrative Professional 1	Anchorage	FT		APT - Exempt Employees	41.2%	70,720	29,137	99,857	23,067
300405	Training & Development 3	Anchorage	FT		PERS - Classified	51.8%	56,900	29,474	86,374	44,339
300415	Admin Generalist 3	Anchorage	FT		PERS - Classified	51.8%	74,075	38,371	112,446	57,723
300420	Administrative Professional 4	Anchorage	FT		APT - Exempt Employees	41.2%	104,295	42,970	147,265	75,596
300430	Admin Generalist 4	Anchorage	FT		PERS - Classified	51.8%	47,980	24,854	72,834	37,388
300440	Professor	Anchorage	FT		United Academics BU	30.8%	89,516	27,571	117,087	60,105
300445	Associate Professor	Anchorage	FT		United Academics BU	30.8%	74,311	22,888	97,199	49,896
300455	Assistant Professor	Anchorage	FT		United Academics BU	30.8%	74,261	22,872	97,133	49,862
300470	Assistant Professor	Anchorage	FT		United Academics BU	30.8%	86,413	26,615	113,028	58,022
300475	Professor	Anchorage	FT		United Academics BU	30.8%	82,836	25,513	108,349	55,620
300485	Associate Professor	Anchorage	FT		United Academics BU	30.8%	70,860	21,825	92,685	47,579
300495	Professor	Anchorage	FT		United Academics BU	30.8%	80,436	24,774	105,210	54,008
300500	Associate Professor	Anchorage	FT		United Academics BU	30.8%	93,528	28,807	122,335	62,799
300505	Term Asst Professor	Anchorage	FT		United Academics BU	30.8%	128,000	39,424	167,424	42,972
300510	Professor	Anchorage	FT		United Academics BU	30.8%	97,078	29,900	126,978	65,182
300511	Term Asst Professor	Anchorage	FT		United Academics BU	30.8%	80,700	24,856	105,556	54,186

Personal Services Expenditure Detail
University of Alaska

Component: Anchorage Campus (753)

RDU: University of Alaska Anchorage (235)

Notes:

1. If a position is split, an asterisk (*) will appear in the Split/Count column. If the split position is also counted in the component, two asterisks (**) will appear in the column.
2. "Pool" PCN refers to UA temporary positions, such as adjunct faculty; student employees; and other non-permanent staff. Multiple incumbents may share the same labor pool position number and pooled budget.

PCN	Job Class Title	Location	Time Status	Split/ Count	Employee Class	Benefit Rate	Annual Budgeted Salary	Annual Benefits	Total Costs	UGF Estimate
300515	Student Svcs Manager 1	Anchorage	FT		APT - Exempt Employees	41.2%	64,693	26,654	91,347	46,892
300520	Associate Professor	Anchorage	FT		United Academics BU	30.8%	87,415	26,924	114,339	35,805
300525	Associate Dean/Faculty	Anchorage	FT		Non-Represented Faculty	25.1%	165,718	41,595	207,313	106,421
300530	Student Svcs Technician 3	Anchorage	FT		PERS - Classified	51.8%	54,584	28,275	82,859	42,534
300535	Administrative Professional 4	Anchorage	FT		APT - Exempt Employees	41.2%	95,362	39,289	134,651	69,121
300540	Term Instructor	Anchorage	FT		United Academics BU	30.8%	82,836	25,513	108,349	55,620
300550	Administrative Professional 3	Anchorage	FT		APT - Exempt Employees	41.2%	66,638	27,455	94,093	48,301
300560	Term Asst Professor	Anchorage	FT		United Academics BU	30.8%	79,908	24,612	104,520	53,654
300565	Administrative Professional 3	Anchorage	FT		APT - Exempt Employees	41.2%	76,555	31,541	108,096	55,489
300570	Communications Specialist 4	Anchorage	FT		APT - Exempt Employees	41.2%	64,305	26,494	90,799	46,610
300575	Associate Professor	Anchorage	FT		United Academics BU	30.8%	146,211	45,033	191,244	98,173
300580	Professor	Anchorage	FT		United Academics BU	30.8%	172,792	53,220	226,012	116,020
300585	Professor	Anchorage	FT		United Academics BU	30.8%	90,656	27,922	118,578	60,870
300590	Associate Professor	Anchorage	FT		United Academics BU	30.8%	122,668	37,782	160,450	82,365
300595	Professor	Anchorage	FT		United Academics BU	30.8%	141,853	43,691	185,544	95,246
300600	Associate Professor	Anchorage	FT		United Academics BU	30.8%	116,411	35,855	152,266	78,164
300605	Professor	Anchorage	FT		United Academics BU	30.8%	206,654	63,649	270,303	138,757
300610	Communications Specialist 3	Anchorage	FT		PERS - Classified	51.8%	50,586	26,204	76,790	39,419
300615	Associate Professor	Anchorage	FT		United Academics BU	30.8%	149,398	46,015	195,413	100,312
300625	Term Instructor	Anchorage	FT		United Academics BU	30.8%	123,824	38,138	161,962	83,141
300630	Associate Professor	Anchorage	FT		United Academics BU	30.8%	126,845	39,068	165,913	85,169
300635	Term Asst Professor	Anchorage	FT		United Academics BU	30.8%	62,700	19,312	82,012	42,100
300640	Professor	Anchorage	FT		United Academics BU	30.8%	109,031	33,582	142,613	73,208
300645	Administrative Professional 3	Anchorage	FT		APT - Exempt Employees	41.2%	83,757	34,508	118,265	36,426
300650	Professor	Anchorage	FT		United Academics BU	30.8%	125,079	38,524	163,603	83,984
300655	Professor	Anchorage	FT		United Academics BU	30.8%	125,178	38,555	163,733	84,050
300660	Research Technician 3	Anchorage	FT		PERS - Classified	51.8%	50,438	26,127	76,565	39,304
300665	Term Asst Professor	Anchorage	FT		United Academics BU	30.8%	66,900	20,605	87,505	44,920
300670	Assistant Professor	Anchorage	FT		United Academics BU	30.8%	105,828	32,595	138,423	71,058
300675	Assistant Professor	Anchorage	FT		United Academics BU	30.8%	70,283	21,647	91,930	47,191
300680	Fiscal Professional 2	Anchorage	FT		APT - Exempt Employees	41.2%	67,300	27,728	95,028	48,781
300685	Assistant Professor	Anchorage	FT		United Academics BU	30.8%	71,471	22,013	93,484	47,989

Personal Services Expenditure Detail
University of Alaska

Component: Anchorage Campus (753)

RDU: University of Alaska Anchorage (235)

Notes:

1. If a position is split, an asterisk (*) will appear in the Split/Count column. If the split position is also counted in the component, two asterisks (**) will appear in the column.
2. "Pool" PCN refers to UA temporary positions, such as adjunct faculty; student employees; and other non-permanent staff. Multiple incumbents may share the same labor pool position number and pooled budget.

PCN	Job Class Title	Location	Time Status	Split/ Count	Employee Class	Benefit Rate	Annual	Annual	Total	UGF
							Budgeted			
300690	Assistant Professor	Anchorage	FT		United Academics BU	30.8%	98,432	30,317	128,749	66,092
300695	Administrative Management 2	Anchorage	FT		APT - Exempt Employees	41.2%	79,800	32,878	112,678	57,842
300700	Research Professional 2	Anchorage	FT		APT - Exempt Employees	41.2%	56,294	23,193	79,487	32,643
300705	Assistant Professor	Anchorage	FT		United Academics BU	30.8%	95,592	29,442	125,034	64,185
300710	Associate Professor	Anchorage	FT		United Academics BU	30.8%	158,082	48,689	206,771	93,406
300715	Term Asst Professor	Anchorage	FT		United Academics BU	30.8%	118,805	36,592	155,397	79,771
300725	Term Assistant Professor	Anchorage	FT		United Academics BU	30.8%	64,000	19,712	83,712	0
300730	Term Asst Professor	Anchorage	FT		United Academics BU	30.8%	137,577	42,374	179,951	92,375
300735	Fiscal Professional 3	Anchorage	FT		APT - Exempt Employees	41.2%	91,700	37,780	129,480	66,467
300740	Assistant Professor	Anchorage	FT		Non-Represented Faculty	25.1%	181,021	45,436	226,457	116,249
300745	Professor	Anchorage	FT		United Academics BU	30.8%	118,244	36,419	154,663	79,394
300750	Assistant Professor	Anchorage	FT		United Academics BU	30.8%	62,127	19,135	81,262	41,715
300755	Professor	Anchorage	FT		United Academics BU	30.8%	125,376	38,616	163,992	84,183
300760	Associate Professor	Anchorage	FT		United Academics BU	30.8%	99,802	30,739	130,541	67,011
300770	Assistant Professor	Anchorage	FT		United Academics BU	30.8%	86,413	26,615	113,028	58,022
300780	Term Asst Professor	Anchorage	FT		United Academics BU	30.8%	67,800	20,882	88,682	45,524
300795	Assistant Professor	Anchorage	FT		United Academics BU	30.8%	84,663	26,076	110,739	56,846
300805	Admin Generalist 4	Anchorage	FT		PERS - Classified	51.8%	57,982	30,035	88,017	45,182
300815	Term Asst Professor	Anchorage	PT		United Academics BU	30.8%	57,400	17,679	75,079	38,541
300825	Assistant Professor	Anchorage	FT		United Academics BU	30.8%	82,549	25,425	107,974	55,427
300830	Training & Development 4	Anchorage	FT		APT - Exempt Employees	41.2%	75,200	30,982	106,182	0
300835	Associate Professor	Anchorage	FT		United Academics BU	30.8%	76,755	23,641	100,396	51,537
300840	Assistant Professor	Anchorage	FT		United Academics BU	30.8%	91,927	28,314	120,241	61,724
300850	Assistant Professor	Anchorage	FT		United Academics BU	30.8%	86,413	26,615	113,028	58,022
300855	Assistant Professor	Anchorage	FT		United Academics BU	30.8%	90,739	27,948	118,687	60,926
300860	Associate Professor	Anchorage	FT		United Academics BU	30.8%	93,528	28,807	122,335	62,799
300870	Assistant Professor	Anchorage	FT		United Academics BU	30.8%	105,911	32,621	138,532	71,113
300875	Safety Svcs-Emerg Dispatcher 1	Anchorage	FT		PERS - Classified	51.8%	48,450	25,097	73,547	37,754
300880	Assistant Professor	Anchorage	FT		United Academics BU	30.8%	86,413	26,615	113,028	58,022
300885	Assistant Professor	Anchorage	FT		United Academics BU	30.8%	76,754	23,640	100,394	51,536
300895	Instructional Designer 4	Anchorage	FT		APT - Exempt Employees	41.2%	86,236	35,529	121,765	62,507
300900	Fiscal Technician 3	Anchorage	FT		PERS - Classified	51.8%	52,490	27,190	79,680	40,903

Personal Services Expenditure Detail
University of Alaska

Component: Anchorage Campus (753)

RDU: University of Alaska Anchorage (235)

Notes:

1. If a position is split, an asterisk (*) will appear in the Split/Count column. If the split position is also counted in the component, two asterisks (**) will appear in the column.
2. "Pool" PCN refers to UA temporary positions, such as adjunct faculty; student employees; and other non-permanent staff. Multiple incumbents may share the same labor pool position number and pooled budget.

PCN	Job Class Title	Location	Time Status	Split/ Count	Employee Class	Benefit Rate	Annual	Annual	Total	UGF
							Budgeted Salary	Benefits	Costs	Estimate
300905	Admin Generalist 4	Anchorage	FT		PERS - Classified	51.8%	47,980	24,854	72,834	37,388
300915	Human Resources Technician 3	Anchorage	FT		PERS - Classified	51.8%	53,537	27,732	81,269	41,718
300920	Admin Specialist 3	Anchorage	FT		APT - Exempt Employees	41.2%	56,251	23,175	79,426	40,772
300940	Development 2	Anchorage	FT		PERS - Classified	51.8%	59,115	30,622	89,737	0
300955	IS Net Technician 7	Anchorage	FT		PERS - Classified	51.8%	73,605	38,127	111,732	57,356
300960	Broadcast/Media Professional 3	Anchorage	FT		APT - Exempt Employees	41.2%	79,800	32,878	112,678	0
300965	Communications Specialist 2	Anchorage	FT		PERS - Classified	51.8%	48,000	24,864	72,864	37,404
300980	Term Asst Professor	Anchorage	FT		United Academics BU	30.8%	77,993	24,022	102,015	52,368
300985	Professor	Anchorage	FT		Non-Represented Faculty	25.1%	100,893	25,324	126,217	64,792
300990	Assistant Professor	Anchorage	FT		United Academics BU	30.8%	68,016	20,949	88,965	45,669
301000	Associate Professor	Anchorage	FT		United Academics BU	30.8%	102,526	31,578	134,104	68,840
301020	Administrative Professional 3	Anchorage	FT		APT - Exempt Employees	41.2%	90,703	37,370	128,073	65,744
301025	Admin Specialist 1	Anchorage	FT		PERS - Classified	51.8%	57,982	30,035	88,017	45,182
301030	Human Resources Technician 3	Anchorage	FT		PERS - Classified	51.8%	52,490	27,190	79,680	40,903
301035	Admin Specialist 3	Anchorage	FT		APT - Exempt Employees	41.2%	65,291	26,900	92,191	47,325
301055	Professor	Anchorage	FT		United Academics BU	30.8%	62,127	19,135	81,262	41,715
301059	Assistant Professor	Anchorage	FT		United Academics BU	30.8%	56,711	17,467	74,178	38,078
301061	Term Asst Professor	Anchorage	FT		United Academics BU	30.8%	72,495	22,328	94,823	48,676
301065	Term Instructor	Anchorage	FT		United Academics BU	30.8%	77,332	23,818	101,150	51,924
301070	Admin Generalist 4	Anchorage	FT		PERS - Classified	51.8%	56,828	29,437	86,265	44,283
301077	IS Professional 2A	Anchorage	FT		PERS - Classified	51.8%	87,156	45,147	132,303	67,916
301081	Professor	Anchorage	FT		United Academics BU	30.8%	102,691	31,629	134,320	68,951
301082	Associate Professor	Anchorage	FT		United Academics BU	30.8%	87,833	27,053	114,886	41,282
301083	Term Instructor	Anchorage	FT		United Academics BU	30.8%	76,800	23,654	100,454	51,567
301085	Assistant Professor	Anchorage	FT		United Academics BU	30.8%	63,745	19,633	83,378	42,801
301086	Professor	Anchorage	FT		United Academics BU	30.8%	149,300	45,984	195,284	40,099
301087	Fiscal Technician 3	Anchorage	FT		PERS - Classified	51.8%	52,490	27,190	79,680	40,903
301089	Term Instructor	Anchorage	FT		United Academics BU	30.8%	57,800	17,802	75,602	38,809
301091	Assistant Professor	Anchorage	FT		United Academics BU	30.8%	86,413	26,615	113,028	58,022
301092	Professor	Anchorage	FT		United Academics BU	30.8%	67,443	20,772	88,215	45,284
301093	Professor	Anchorage	FT		United Academics BU	30.8%	119,664	36,857	156,521	80,348
301094	Professor	Anchorage	FT		United Academics BU	30.8%	134,621	41,463	176,084	90,391

Personal Services Expenditure Detail
University of Alaska

Component: Anchorage Campus (753)

RDU: University of Alaska Anchorage (235)

Notes:

1. If a position is split, an asterisk (*) will appear in the Split/Count column. If the split position is also counted in the component, two asterisks (**) will appear in the column.
2. "Pool" PCN refers to UA temporary positions, such as adjunct faculty; student employees; and other non-permanent staff. Multiple incumbents may share the same labor pool position number and pooled budget.

PCN	Job Class Title	Location	Time Status	Split/ Count	Employee Class	Benefit Rate	Annual Budgeted Salary	Annual Benefits	Total Costs	UGF Estimate
301095	Research Asst Professor	Anchorage	FT		United Academics BU	30.8%	94,200	29,014	123,214	0
301097	Term Asst Professor	Anchorage	FT		United Academics BU	30.8%	152,400	46,939	199,339	102,328
301099	Associate Professor	Anchorage	FT		United Academics BU	30.8%	88,724	27,327	116,051	59,573
301100	Professor	Anchorage	FT		United Academics BU	30.8%	82,549	25,425	107,974	55,427
301101	Associate Professor	Anchorage	FT		United Academics BU	30.8%	75,186	23,157	98,343	50,483
301102	Associate Professor	Anchorage	FT		United Academics BU	30.8%	83,474	25,710	109,184	51,004
301103	Assistant Professor	Anchorage	FT		United Academics BU	30.8%	117,468	36,180	153,648	78,873
301104	Assistant Professor	Anchorage	FT		United Academics BU	30.8%	80,436	24,774	105,210	54,008
301107	Research Technician 3	Anchorage	PT		PERS - Classified	51.8%	38,197	19,786	57,983	29,765
301108	Student Svcs Professional 2	Anchorage	FT		PERS - Classified	51.8%	54,584	28,275	82,859	42,534
301110	Admin Generalist 4	Anchorage	FT		PERS - Classified	51.8%	51,977	26,924	78,901	40,503
301112	IS Professional 3A	Anchorage	FT		APT - Exempt Employees	41.2%	75,849	31,250	107,099	54,978
301114	IS Professional 5A	Anchorage	FT		APT - Exempt Employees	41.2%	111,818	46,069	157,887	81,049
301117	Assistant Professor	Anchorage	FT		United Academics BU	30.8%	74,080	22,817	96,897	49,741
301120	Professor	Anchorage	FT		United Academics BU	30.8%	84,795	26,117	110,912	56,935
301121	Professor	Anchorage	FT		United Academics BU	30.8%	109,923	33,856	143,779	73,807
301123	Professor	Anchorage	FT		United Academics BU	30.8%	95,889	29,534	125,423	64,384
301125	Assistant Professor	Anchorage	FT		United Academics BU	30.8%	64,141	19,755	83,896	43,067
301126	Director (Academic-Faculty)	Anchorage	FT		Non-Represented Faculty	25.1%	145,949	36,633	182,582	93,726
301127	Assistant Professor	Anchorage	FT		United Academics BU	30.8%	52,274	16,100	68,374	35,099
301128	Assistant Professor	Anchorage	FT		United Academics BU	30.8%	82,550	25,425	107,975	55,428
301131	Professor	Anchorage	FT		United Academics BU	30.8%	105,266	32,422	137,688	35,340
301133	Associate Professor	Anchorage	FT		United Academics BU	30.8%	86,891	26,762	113,653	6,418
301134	Associate Professor	Anchorage	FT		United Academics BU	30.8%	81,905	25,227	107,132	20,898
301135	Professor	Anchorage	PT		United Academics BU	30.8%	108,173	33,317	141,490	72,632
301136	Term Asst Professor	Anchorage	FT		United Academics BU	30.8%	64,000	19,712	83,712	42,972
301137	Assistant Professor	Anchorage	FT		United Academics BU	30.8%	99,802	30,739	130,541	67,011
301139	Assistant Professor	Anchorage	FT		United Academics BU	30.8%	79,247	24,408	103,655	53,210
301140	Communications Specialist 3	Anchorage	FT		PERS - Classified	51.8%	54,584	28,275	82,859	42,534
301141	Admin Generalist 4	Anchorage	FT		PERS - Classified	51.8%	47,980	24,854	72,834	37,388
301144	Term Instructor	Anchorage	FT		United Academics BU	30.8%	51,775	15,947	67,722	34,764
301148	Director (Academic-Faculty)	Anchorage	FT		Non-Represented Faculty	25.1%	127,228	31,934	159,162	81,704

Personal Services Expenditure Detail
University of Alaska

Component: Anchorage Campus (753)

RDU: University of Alaska Anchorage (235)

Notes:

1. If a position is split, an asterisk (*) will appear in the Split/Count column. If the split position is also counted in the component, two asterisks (**) will appear in the column.
2. "Pool" PCN refers to UA temporary positions, such as adjunct faculty; student employees; and other non-permanent staff. Multiple incumbents may share the same labor pool position number and pooled budget.

PCN	Job Class Title	Location	Time Status	Split/ Count	Employee Class	Benefit Rate	Annual Budgeted Salary	Annual Benefits	Total Costs	UGF Estimate
301151	Assistant Professor	Anchorage	FT		United Academics BU	30.8%	63,497	19,557	83,054	42,635
301152	Professor	Anchorage	FT		United Academics BU	30.8%	93,132	28,685	121,817	62,533
301153	Professor	Anchorage	FT		United Academics BU	30.8%	89,483	27,561	117,044	60,083
301155	Professor	Anchorage	FT		United Academics BU	30.8%	87,882	27,068	114,950	59,008
301156	Assistant Professor	Anchorage	FT		United Academics BU	30.8%	74,310	22,887	97,197	49,895
301158	Term Asst Professor	Anchorage	FT		United Academics BU	30.8%	89,781	27,653	117,434	60,283
301159	Assistant Professor	Anchorage	FT		United Academics BU	30.8%	90,738	27,947	118,685	60,926
301160	Term Asst Professor	Anchorage	FT		United Academics BU	30.8%	210,400	64,803	275,203	141,272
301162	Student Svcs Professional 2	Anchorage	FT		PERS - Classified	51.8%	52,490	27,190	79,680	40,903
301164	Term Asst Professor	Anchorage	FT		United Academics BU	30.8%	84,663	26,076	110,739	56,846
301165	Professor	Anchorage	FT		United Academics BU	30.8%	92,010	28,339	120,349	61,780
301166	Assistant Professor	Anchorage	FT		United Academics BU	30.8%	77,761	23,950	101,711	52,212
301167	Associate Professor	Anchorage	FT		United Academics BU	30.8%	79,429	24,464	103,893	53,332
301168	Professor	Anchorage	FT		United Academics BU	30.8%	92,769	28,573	121,342	62,289
301169	Professor	Anchorage	FT		United Academics BU	30.8%	93,363	28,756	122,119	62,688
301170	Assistant Professor	Anchorage	FT		United Academics BU	30.8%	77,250	23,793	101,043	51,869
301171	Term Instructor	Anchorage	FT		United Academics BU	30.8%	63,844	19,664	83,508	42,868
301174	Assistant Professor	Anchorage	FT		United Academics BU	30.8%	90,738	27,947	118,685	44,476
301175	Associate Professor	Anchorage	FT		United Academics BU	30.8%	86,413	26,615	113,028	58,022
301176	Associate Professor	Anchorage	FT		United Academics BU	30.8%	77,134	23,757	100,891	51,791
301177	Associate Professor	Anchorage	FT		United Academics BU	30.8%	96,482	29,716	126,198	64,782
301179	Professor	Anchorage	FT		United Academics BU	30.8%	143,884	44,316	188,200	96,610
301180	Professor	Anchorage	FT		United Academics BU	30.8%	64,025	19,720	83,745	42,989
301181	Assistant Professor	Anchorage	FT		United Academics BU	30.8%	75,136	23,142	98,278	50,450
301182	IS Consultant 2A	Anchorage	FT		PERS - Classified	51.8%	59,756	30,954	90,710	46,565
301183	Term Instructor	Anchorage	FT		United Academics BU	30.8%	55,500	17,094	72,594	0
301185	Admin Specialist 2	Anchorage	FT		PERS - Classified	51.8%	54,584	28,275	82,859	21,267
301186	Research Technician 4	Anchorage	FT		PERS - Classified	51.8%	52,490	27,190	79,680	40,903
301188	Term Asst Professor	Anchorage	FT		United Academics BU	30.8%	125,062	38,519	163,581	83,972
301189	IS Net Technician 7	Anchorage	FT		PERS - Classified	51.8%	60,355	31,264	91,619	47,031
301191	Associate Director/Faculty	Anchorage	FT		Non-Represented Faculty	25.1%	89,700	22,515	112,215	57,604
301192	Training & Development 1	Anchorage	FT		PERS - Classified	51.8%	27,778	14,389	42,167	0

Personal Services Expenditure Detail
University of Alaska

Component: Anchorage Campus (753)

RDU: University of Alaska Anchorage (235)

Notes:

1. If a position is split, an asterisk (*) will appear in the Split/Count column. If the split position is also counted in the component, two asterisks (**) will appear in the column.
2. "Pool" PCN refers to UA temporary positions, such as adjunct faculty; student employees; and other non-permanent staff. Multiple incumbents may share the same labor pool position number and pooled budget.

PCN	Job Class Title	Location	Time Status	Split/ Count	Employee Class	Benefit Rate	Annual	Annual	Total	UGF
							Budgeted			
301193	Associate Professor	Anchorage	FT		United Academics BU	30.8%	80,254	24,718	104,972	53,886
301194	Assistant Professor	Anchorage	FT		United Academics BU	30.8%	74,311	22,888	97,199	49,896
301195	Assistant Professor	Anchorage	FT		United Academics BU	30.8%	97,359	29,987	127,346	65,371
301196	Associate Professor	Anchorage	FT		United Academics BU	30.8%	87,238	26,869	114,107	58,575
301197	Professor	Anchorage	FT		United Academics BU	30.8%	172,347	53,083	225,430	115,721
301199	Professor	Anchorage	FT		United Academics BU	30.8%	166,931	51,415	218,346	112,085
301200	Professor	Anchorage	FT		United Academics BU	30.8%	87,007	26,798	113,805	58,420
301204	Assistant Professor	Anchorage	FT		United Academics BU	30.8%	79,594	24,515	104,109	53,443
301205	Term Asst Professor	Anchorage	FT		United Academics BU	30.8%	74,310	22,887	97,197	49,895
301206	Professor	Anchorage	FT		United Academics BU	30.8%	106,703	32,865	139,568	71,645
301207	Professor	Anchorage	FT		United Academics BU	30.8%	92,340	28,441	120,781	62,001
301211	Associate Dean/Faculty	Anchorage	FT		Non-Represented Faculty	25.1%	127,158	31,917	159,075	81,659
301213	IS Professional 3A	Anchorage	FT		APT - Exempt Employees	41.2%	82,133	33,839	115,972	59,533
301214	Assistant Professor	Anchorage	FT		United Academics BU	30.8%	74,310	22,887	97,197	49,895
301215	IS Professional 3A	Anchorage	FT		APT - Exempt Employees	41.2%	77,303	31,849	109,152	56,032
301216	Professor	Anchorage	FT		United Academics BU	30.8%	93,165	28,695	121,860	62,555
301219	Assistant Professor	Anchorage	FT		United Academics BU	30.8%	74,079	22,816	96,895	49,740
301220	Training & Development 4	Anchorage	FT		APT - Exempt Employees	41.2%	68,700	28,304	97,004	49,796
301221	Associate Director/Faculty	Anchorage	FT		Non-Represented Faculty	25.1%	89,700	22,515	112,215	57,604
301223	Associate Professor	Anchorage	FT		United Academics BU	30.8%	71,967	22,166	94,133	48,322
301224	Associate Professor	Anchorage	FT		United Academics BU	30.8%	153,859	47,389	201,248	103,308
301225	Director (Academic-Faculty)	Anchorage	FT		Non-Represented Faculty	25.1%	180,508	45,308	225,816	115,919
301226	Fiscal Professional 2	Anchorage	FT		APT - Exempt Employees	41.2%	70,015	28,846	98,861	50,749
301227	Professor	Anchorage	FT		United Academics BU	30.8%	70,847	21,821	92,668	47,570
301228	Admin Specialist 1	Anchorage	FT		PERS - Classified	51.8%	51,977	26,924	78,901	40,503
301229	Development 4	Anchorage	FT		APT - Exempt Employees	41.2%	101,239	41,710	142,949	73,381
301230	Assistant Professor	Anchorage	FT		United Academics BU	30.8%	105,823	32,593	138,416	71,054
301232	Fiscal Professional 1	Anchorage	FT		PERS - Classified	51.8%	56,900	29,474	86,374	44,339
301234	Student Svcs Professional 3	Anchorage	FT		APT - Exempt Employees	41.2%	60,355	24,866	85,221	43,747
301235	Assistant Professor	Anchorage	FT		United Academics BU	30.8%	71,372	21,983	93,355	47,922
301237	Assistant Professor	Anchorage	FT		United Academics BU	30.8%	151,334	46,611	197,945	101,612
301238	Professor	Anchorage	FT		United Academics BU	30.8%	109,543	33,739	143,282	73,552

Personal Services Expenditure Detail
University of Alaska

Component: Anchorage Campus (753)

RDU: University of Alaska Anchorage (235)

Notes:

1. If a position is split, an asterisk (*) will appear in the Split/Count column. If the split position is also counted in the component, two asterisks (**) will appear in the column.
2. "Pool" PCN refers to UA temporary positions, such as adjunct faculty; student employees; and other non-permanent staff. Multiple incumbents may share the same labor pool position number and pooled budget.

PCN	Job Class Title	Location	Time Status	Split/ Count	Employee Class	Benefit Rate	Annual	Annual	Total	UGF
							Budgeted Salary	Benefits	Costs	Estimate
301241	Associate Professor	Anchorage	FT		United Academics BU	30.8%	76,325	23,508	99,833	51,248
301242	Student Svcs Professional 2	Anchorage	FT		PERS - Classified	51.8%	52,490	27,190	79,680	40,903
301242	Training & Development 4	Anchorage	FT		APT - Exempt Employees	41.2%	75,900	31,271	107,171	55,015
301243	Professor	Anchorage	FT		United Academics BU	30.8%	137,577	42,374	179,951	92,375
301244	Research Professional 4	Anchorage	PT		APT - Exempt Employees	41.2%	38,000	15,656	53,656	27,544
301245	Research Technician 4	Anchorage	FT		PERS - Classified	51.8%	75,102	38,903	114,005	58,523
301246	Term Asst Professor	Anchorage	FT		United Academics BU	30.8%	67,740	20,864	88,604	45,484
301248	Professor	Anchorage	FT		United Academics BU	30.8%	63,893	19,679	83,572	42,901
301249	Associate Professor	Anchorage	FT		United Academics BU	30.8%	90,524	27,881	118,405	60,782
301250	Associate Professor	Anchorage	FT		United Academics BU	30.8%	68,681	21,154	89,835	46,115
301251	Professor	Anchorage	PT		United Academics BU	30.8%	148,952	45,877	194,829	100,013
301252	Professor	Anchorage	FT		United Academics BU	30.8%	114,826	35,366	150,192	77,099
301253	Admin Specialist 3	Anchorage	FT		APT - Exempt Employees	41.2%	91,643	37,757	129,400	66,426
301254	Assistant Professor	Anchorage	FT		United Academics BU	30.8%	77,795	23,961	101,756	52,235
301255	Assistant Professor	Anchorage	FT		United Academics BU	30.8%	79,379	24,449	103,828	53,299
301256	Administrative Management 3	Anchorage	FT		APT - Exempt Employees	41.2%	98,300	40,500	138,800	71,251
301257	Research Professional 3	Anchorage	FT		APT - Exempt Employees	41.2%	63,400	26,121	89,521	0
301258	Associate Professor	Anchorage	FT		United Academics BU	30.8%	82,318	25,354	107,672	55,272
301259	Term Instructor	Anchorage	FT		United Academics BU	30.8%	51,775	15,947	67,722	34,764
301260	Assistant Professor	Anchorage	FT		United Academics BU	30.8%	80,090	24,668	104,758	26,888
301262	Assistant Professor	Anchorage	PT		United Academics BU	30.8%	37,176	11,450	48,626	24,962
301263	Director (Academic-Faculty)	Anchorage	FT		Non-Represented Faculty	25.1%	139,340	34,974	174,314	89,482
301266	Stu Svcs Profess 2 (Exempt)	Anchorage	FT		APT - Exempt Employees	41.2%	54,113	22,295	76,408	39,223
301267	Assistant Professor	Anchorage	FT		United Academics BU	30.8%	66,666	20,533	87,199	44,763
301270	Associate Professor	Anchorage	FT		United Academics BU	30.8%	70,547	21,728	92,275	47,368
301271	Student Svcs Professional 2	Anchorage	FT		PERS - Classified	51.8%	56,294	29,160	85,454	43,867
301272	Associate Professor	Anchorage	FT		United Academics BU	30.8%	68,681	21,154	89,835	46,115
301273	Student Svcs Professional 3	Anchorage	FT		APT - Exempt Employees	41.2%	60,355	24,866	85,221	43,747
301274	Admin Generalist 4	Anchorage	FT		PERS - Classified	51.8%	47,083	24,389	71,472	36,689
301278	Student Svcs Manager 2	Anchorage	FT		APT - Exempt Employees	41.2%	88,950	36,647	125,597	64,474
301280	Fiscal Technician 3	Anchorage	FT		PERS - Classified	51.8%	54,584	28,275	82,859	42,534
301281	Professor	Anchorage	FT		United Academics BU	30.8%	42,346	13,043	55,389	28,433

Personal Services Expenditure Detail
University of Alaska

Component: Anchorage Campus (753)

RDU: University of Alaska Anchorage (235)

Notes:

1. If a position is split, an asterisk (*) will appear in the Split/Count column. If the split position is also counted in the component, two asterisks (**) will appear in the column.
2. "Pool" PCN refers to UA temporary positions, such as adjunct faculty; student employees; and other non-permanent staff. Multiple incumbents may share the same labor pool position number and pooled budget.

PCN	Job Class Title	Location	Time Status	Split/ Count	Employee Class	Benefit Rate	Annual Budgeted Salary	Annual Benefits	Total Costs	UGF Estimate
301283	Communications Specialist 3	Anchorage	FT		PERS - Classified	51.8%	60,355	31,264	91,619	47,031
301284	Professor	Anchorage	FT		United Academics BU	30.8%	92,290	28,425	120,715	61,968
301288	Assistant Professor	Anchorage	FT		United Academics BU	30.8%	85,504	26,335	111,839	57,411
301290	Associate Professor	Anchorage	FT		United Academics BU	30.8%	87,481	26,944	114,425	58,739
301292	Professor	Anchorage	FT		United Academics BU	30.8%	98,646	30,383	129,029	66,235
301294	Professor	Anchorage	FT		United Academics BU	30.8%	94,684	29,163	123,847	63,575
301295	Associate Professor	Anchorage	FT		United Academics BU	30.8%	92,911	28,617	121,528	62,385
301296	Research Professional 2	Anchorage	FT		APT - Exempt Employees	41.2%	123,200	50,758	173,958	44,650
301297	Fiscal Technician 3	Anchorage	FT		PERS - Classified	51.8%	52,490	27,190	79,680	40,903
301300	Administrative Management 2	Anchorage	PT		APT - Exempt Employees	41.2%	71,000	29,252	100,252	51,463
301303	Professor	Anchorage	FT		United Academics BU	30.8%	98,878	30,454	129,332	66,391
301304	Instructor	Anchorage	FT		United Academics BU	30.8%	64,108	19,745	83,853	43,045
301310	Professor	Anchorage	FT		United Academics BU	30.8%	89,979	27,714	117,693	60,416
301311	Professor	Anchorage	FT		United Academics BU	30.8%	93,727	28,868	122,595	62,932
301312	Professor	Anchorage	FT		United Academics BU	30.8%	116,725	35,951	152,676	78,374
301314	Professor	Anchorage	FT		United Academics BU	30.8%	127,869	39,384	167,253	85,857
301315	Assistant Professor	Anchorage	FT		United Academics BU	30.8%	94,585	29,132	123,717	63,509
301316	Professor	Anchorage	FT		United Academics BU	30.8%	117,022	36,043	153,065	78,574
301317	Human Resources Technician 3	Anchorage	FT		PERS - Classified	51.8%	54,584	28,275	82,859	42,534
301318	Administrative Professional 2	Anchorage	FT		APT - Exempt Employees	41.2%	70,100	28,881	98,981	50,811
301319	Professor	Anchorage	FT		United Academics BU	30.8%	97,821	30,129	127,950	65,681
301320	Admin Specialist 2	Anchorage	FT		PERS - Classified	51.8%	52,500	27,195	79,695	40,910
301321	Associate Professor	Anchorage	FT		United Academics BU	30.8%	91,575	28,205	119,780	61,488
301322	Assistant Professor	Anchorage	FT		United Academics BU	30.8%	66,667	20,533	87,200	44,763
301323	Professor	Anchorage	FT		United Academics BU	30.8%	96,270	29,651	125,921	64,640
301325	Director (Academic-Faculty)	Anchorage	FT		Non-Represented Faculty	25.1%	176,404	44,277	220,681	113,284
301326	Assistant Professor	Anchorage	FT		United Academics BU	30.8%	71,620	22,059	93,679	48,089
301327	Admin Specialist 1 (Exempt)	Anchorage	FT		APT - Exempt Employees	41.2%	64,693	26,654	91,347	46,892
301329	Admin Generalist 4	Anchorage	FT		PERS - Classified	51.8%	47,980	24,854	72,834	37,388
301331	Admin Specialist 2	Anchorage	FT		PERS - Classified	51.8%	56,828	29,437	86,265	44,283
301332	Administrative Professional 4	Anchorage	FT		APT - Exempt Employees	41.2%	97,263	40,072	137,335	28,905
301333	Admin Specialist 1	Anchorage	FT		PERS - Classified	51.8%	47,083	24,389	71,472	36,689

Personal Services Expenditure Detail
University of Alaska

Component: Anchorage Campus (753)

RDU: University of Alaska Anchorage (235)

Notes:

1. If a position is split, an asterisk (*) will appear in the Split/Count column. If the split position is also counted in the component, two asterisks (**) will appear in the column.
2. "Pool" PCN refers to UA temporary positions, such as adjunct faculty; student employees; and other non-permanent staff. Multiple incumbents may share the same labor pool position number and pooled budget.

PCN	Job Class Title	Location	Time Status	Split/ Count	Employee Class	Benefit Rate	Annual	Annual	Total	UGF
							Budgeted Salary	Benefits	Costs	Estimate
301334	Assistant Professor	Anchorage	FT		United Academics BU	30.8%	79,264	24,413	103,677	53,221
301336	Administrative Professional 2	Anchorage	FT		APT - Exempt Employees	41.2%	60,910	25,095	86,005	44,149
301337	Associate Professor	Anchorage	FT		United Academics BU	30.8%	146,178	45,023	191,201	98,150
301339	Fiscal Professional 2	Anchorage	FT		APT - Exempt Employees	41.2%	67,300	27,728	95,028	48,781
301340	Admin Generalist 4	Anchorage	FT		PERS - Classified	51.8%	59,115	30,622	89,737	46,065
301341	Professor	Anchorage	FT		United Academics BU	30.8%	98,432	30,317	128,749	66,092
301342	Director (Academic-Faculty)	Anchorage	PT		Non-Represented Faculty	25.1%	157,961	39,648	197,609	16,231
301343	Assistant Professor	Anchorage	FT		United Academics BU	30.8%	73,404	22,608	96,012	44,765
301344	Environmental Health/Safety 2	Anchorage	FT		APT - Exempt Employees	41.2%	72,857	30,017	102,874	52,809
301345	Professor	Anchorage	FT		United Academics BU	30.8%	83,012	25,568	108,580	55,738
301346	Professor	Anchorage	FT		United Academics BU	30.8%	112,647	34,695	147,342	75,636
301348	Professor	Anchorage	FT		United Academics BU	30.8%	104,524	32,193	136,717	70,182
301350	Associate Professor	Anchorage	FT		United Academics BU	30.8%	84,547	26,040	110,587	56,769
301351	Administrative Management 2	Anchorage	FT		APT - Exempt Employees	41.2%	74,400	30,653	105,053	53,927
301352	Associate Dean/Faculty	Anchorage	FT		Non-Represented Faculty	25.1%	125,625	31,532	157,157	80,674
301354	Human Resources Technician 4	Anchorage	FT		PERS - Classified	51.8%	69,309	35,902	105,211	54,009
301355	Assistant Professor	Anchorage	FT		United Academics BU	30.8%	77,250	23,793	101,043	51,869
301357	Fiscal Professional 2	Anchorage	FT		APT - Exempt Employees	41.2%	67,963	28,001	95,964	49,262
301360	Professor	Anchorage	FT		United Academics BU	30.8%	111,524	34,349	145,873	74,882
301361	Professor	Anchorage	FT		United Academics BU	30.8%	76,111	23,442	99,553	51,104
301362	Professor	Anchorage	FT		United Academics BU	30.8%	95,559	29,432	124,991	64,163
301364	Fiscal Manager 2	Anchorage	FT		APT - Exempt Employees	41.2%	106,390	43,833	150,223	77,115
301365	Assistant Professor	Anchorage	FT		United Academics BU	30.8%	104,029	32,041	136,070	69,850
301366	Student Svcs Professional 3	Anchorage	FT		APT - Exempt Employees	41.2%	66,200	27,274	93,474	47,984
301368	Term Asst Professor	Anchorage	FT		United Academics BU	30.8%	82,285	25,344	107,629	55,250
301369	Admin Specialist 2	Anchorage	FT		PERS - Classified	51.8%	135,092	69,978	205,070	105,270
301370	Administrative Professional 2	Anchorage	FT		APT - Exempt Employees	41.2%	85,467	35,212	120,679	61,949
301371	Professor	Anchorage	FT		United Academics BU	30.8%	92,719	28,557	121,276	62,256
301372	Assistant Professor	Anchorage	FT		United Academics BU	30.8%	76,721	23,630	100,351	51,514
301374	Professor	Anchorage	FT		United Academics BU	30.8%	106,142	32,692	138,834	66,992
301375	Development 4	Anchorage	FT		APT - Exempt Employees	41.2%	84,590	34,851	119,441	61,313
301376	Associate Professor	Anchorage	FT		United Academics BU	30.8%	80,056	24,657	104,713	53,753

Personal Services Expenditure Detail
University of Alaska

Component: Anchorage Campus (753)

RDU: University of Alaska Anchorage (235)

Notes:

1. If a position is split, an asterisk (*) will appear in the Split/Count column. If the split position is also counted in the component, two asterisks (**) will appear in the column.
2. "Pool" PCN refers to UA temporary positions, such as adjunct faculty; student employees; and other non-permanent staff. Multiple incumbents may share the same labor pool position number and pooled budget.

PCN	Job Class Title	Location	Time Status	Split/ Count	Employee Class	Benefit Rate	Annual	Annual	Total	UGF
							Budgeted			
301379	Associate Professor	Anchorage	FT		United Academics BU	30.8%	76,127	23,447	99,574	51,115
301380	Communications Specialist 4	Anchorage	FT		APT - Exempt Employees	41.2%	56,828	23,413	80,241	41,191
301382	Student Svcs Professional 3	Anchorage	FT		APT - Exempt Employees	41.2%	56,225	23,165	79,390	40,754
301383	Professor	Anchorage	FT		United Academics BU	30.8%	76,754	23,640	100,394	51,536
301384	Assistant Professor	Anchorage	FT		United Academics BU	30.8%	96,830	29,824	126,654	65,016
301385	Term Asst Professor	Anchorage	FT		United Academics BU	30.8%	76,193	23,467	99,660	51,159
301387	Human Resources Technician 4	Anchorage	FT		PERS - Classified	51.8%	63,389	32,836	96,225	49,396
301388	Assistant Professor	Anchorage	FT		United Academics BU	30.8%	70,233	21,632	91,865	47,158
301392	Assistant Professor	Anchorage	FT		United Academics BU	30.8%	89,434	27,546	116,980	60,050
301393	Assistant Professor	Anchorage	FT		United Academics BU	30.8%	86,413	26,615	113,028	58,022
301394	Assistant Professor	Anchorage	FT		United Academics BU	30.8%	141,092	43,456	184,548	94,735
301395	Professor	Anchorage	FT		United Academics BU	30.8%	167,839	51,694	219,533	112,695
301396	Assistant Professor	Anchorage	FT		United Academics BU	30.8%	132,294	40,747	173,041	88,828
301399	Term Asst Professor	Anchorage	FT		United Academics BU	30.8%	66,139	20,371	86,510	44,409
301400	Professor	Anchorage	FT		United Academics BU	30.8%	122,157	37,624	159,781	82,022
301403	Professor	Anchorage	FT		United Academics BU	30.8%	158,610	48,852	207,462	106,498
301405	Crafts & Trades I (CT1)	Anchorage	FT		AHECTE- Labor Trades & Crafts	46.0%	57,100	26,266	83,366	0
301407	Administrative Management 2	Anchorage	FT		APT - Exempt Employees	41.2%	95,700	39,428	135,128	69,366
301409	Professor	Anchorage	FT		United Academics BU	30.8%	154,879	47,703	202,582	103,993
301410	Director (Academic-Faculty)	Anchorage	FT		Non-Represented Faculty	25.1%	71,117	17,850	88,967	45,670
301411	Term Asst Professor	Anchorage	FT		United Academics BU	30.8%	105,154	32,387	137,541	17,651
301412	Administrative Management 1	Anchorage	FT		APT - Exempt Employees	41.2%	75,849	31,250	107,099	54,978
301413	Research Professional 3	Anchorage	FT		APT - Exempt Employees	41.2%	77,300	31,848	109,148	56,029
301414	Assistant Professor	Anchorage	FT		United Academics BU	30.8%	114,298	35,204	149,502	76,745
301415	Professor	Anchorage	FT		United Academics BU	30.8%	101,420	31,237	132,657	68,098
301417	Associate Professor	Anchorage	FT		United Academics BU	30.8%	106,225	32,717	138,942	71,324
301418	Term Asst Professor	Anchorage	FT		United Academics BU	30.8%	75,962	23,396	99,358	51,004
301419	Instructor	Anchorage	FT		United Academics BU	30.8%	66,171	20,381	86,552	44,430
301420	Assistant Professor	Anchorage	FT		United Academics BU	30.8%	62,127	19,135	81,262	41,715
301421	Student Svcs Professional 2	Anchorage	FT		PERS - Classified	51.8%	57,982	30,035	88,017	45,182
301422	Professor	Anchorage	FT		United Academics BU	30.8%	103,880	31,995	135,875	69,750
301423	Associate Professor	Anchorage	FT		United Academics BU	30.8%	85,571	26,356	111,927	57,456

Personal Services Expenditure Detail
University of Alaska

Component: Anchorage Campus (753)

RDU: University of Alaska Anchorage (235)

Notes:

1. If a position is split, an asterisk (*) will appear in the Split/Count column. If the split position is also counted in the component, two asterisks (**) will appear in the column.
2. "Pool" PCN refers to UA temporary positions, such as adjunct faculty; student employees; and other non-permanent staff. Multiple incumbents may share the same labor pool position number and pooled budget.

PCN	Job Class Title	Location	Time Status	Split/ Count	Employee Class	Benefit Rate	Annual	Annual	Total	UGF
							Budgeted Salary	Benefits	Costs	Estimate
301425	Assistant Professor	Anchorage	FT		United Academics BU	30.8%	73,749	22,715	96,464	49,518
301426	Research Technician 3	Anchorage	FT		PERS - Classified	51.8%	38,798	20,097	58,895	30,233
301427	Instructor	Anchorage	FT		United Academics BU	30.8%	74,823	23,045	97,868	50,239
301428	Student Svcs Professional 2	Anchorage	FT		PERS - Classified	51.8%	57,405	29,736	87,141	44,733
301429	Research Professional 2	Anchorage	FT		APT - Exempt Employees	41.2%	62,200	25,626	87,826	45,085
301430	Associate Professor	Anchorage	FT		United Academics BU	30.8%	96,468	29,712	126,180	64,773
301432	Professor	Anchorage	FT		United Academics BU	30.8%	101,387	31,227	132,614	68,076
301434	Human Resources Technician 3	Anchorage	FT		PERS - Classified	51.8%	50,438	26,127	76,565	39,304
301435	Term Instructor	Anchorage	FT		United Academics BU	30.8%	58,214	17,930	76,144	39,087
301436	Admin Specialist 3	Anchorage	FT		APT - Exempt Employees	41.2%	71,447	29,436	100,883	51,787
301437	Assistant Professor	Anchorage	FT		United Academics BU	30.8%	126,466	38,952	165,418	84,915
301438	Professor	Anchorage	FT		United Academics BU	30.8%	151,445	46,645	198,090	101,687
301439	Associate Professor	Anchorage	FT		United Academics BU	30.8%	91,101	28,059	119,160	61,169
301441	Assistant Professor	Anchorage	FT		United Academics BU	30.8%	121,546	37,436	158,982	81,611
301442	Professor	Anchorage	FT		United Academics BU	30.8%	76,837	23,666	100,503	51,592
301443	Fiscal Professional 3	Anchorage	FT		APT - Exempt Employees	41.2%	74,310	30,616	104,926	53,862
301443	Research Professional 4	Anchorage	FT		APT - Exempt Employees	41.2%	269,700	111,116	380,816	65,162
301444	Student Svcs Professional 2	Anchorage	FT		PERS - Classified	51.8%	55,200	28,594	83,794	43,014
301446	Associate Professor	Anchorage	FT		United Academics BU	30.8%	78,851	24,286	103,137	52,944
301448	Associate Professor	Anchorage	FT		United Academics BU	30.8%	75,318	23,198	98,516	50,572
301449	Assistant Professor	Anchorage	FT		United Academics BU	30.8%	92,274	28,420	120,694	61,957
301450	Director (Academic-Faculty)	Anchorage	FT		Non-Represented Faculty	25.1%	152,981	38,398	191,379	98,242
301451	Research Technician 3	Anchorage	FT		PERS - Classified	51.8%	47,980	24,854	72,834	37,388
301452	Library Technician 2	Anchorage	FT		PERS - Classified	51.8%	34,879	18,067	52,946	27,179
301453	Professor	Anchorage	FT		United Academics BU	30.8%	96,087	29,595	125,682	64,517
301454	Assistant Professor	Anchorage	FT		United Academics BU	30.8%	90,586	27,900	118,486	60,823
301455	Director (Academic-Faculty)	Anchorage	FT		Non-Represented Faculty	25.1%	164,629	41,322	205,951	105,722
301456	Assistant Professor	Anchorage	FT		United Academics BU	30.8%	74,080	22,817	96,897	49,741
301457	Communications Specialist 4	Anchorage	FT		APT - Exempt Employees	41.2%	56,294	23,193	79,487	40,804
301458	Professor	Anchorage	FT		United Academics BU	30.8%	154,664	47,637	202,301	103,848
301459	Assistant Professor	Anchorage	FT		United Academics BU	30.8%	151,346	46,615	197,961	101,620
301461	Fac Svcs-MO&U Supervsr 3 (NE)	Anchorage	FT		PERS - Classified	51.8%	67,300	34,861	102,161	52,443

Personal Services Expenditure Detail
University of Alaska

Component: Anchorage Campus (753)

RDU: University of Alaska Anchorage (235)

Notes:

1. If a position is split, an asterisk (*) will appear in the Split/Count column. If the split position is also counted in the component, two asterisks (**) will appear in the column.
2. "Pool" PCN refers to UA temporary positions, such as adjunct faculty; student employees; and other non-permanent staff. Multiple incumbents may share the same labor pool position number and pooled budget.

PCN	Job Class Title	Location	Time Status	Split/ Count	Employee Class	Benefit Rate	Annual Budgeted Salary	Annual Benefits	Total Costs	UGF Estimate
301462	Assistant Professor	Anchorage	FT		United Academics BU	30.8%	62,127	19,135	81,262	41,715
301463	Admin Generalist 4	Anchorage	FT		PERS - Classified	51.8%	51,977	26,924	78,901	40,503
301464	Assistant Professor	Anchorage	FT		United Academics BU	30.8%	93,099	28,674	121,773	62,511
301465	Training & Development 4	Anchorage	FT		APT - Exempt Employees	41.2%	72,857	30,017	102,874	52,809
301466	Professor	Anchorage	FT		United Academics BU	30.8%	107,909	33,236	141,145	72,455
301467	Assistant Professor	Anchorage	FT		United Academics BU	30.8%	86,413	26,615	113,028	58,022
301469	Professor	Anchorage	FT		United Academics BU	30.8%	58,214	17,930	76,144	39,087
301470	Fiscal Professional 4	Anchorage	FT		APT - Exempt Employees	41.2%	34,132	14,062	48,194	0
301472	Fiscal Professional 3	Anchorage	FT		APT - Exempt Employees	41.2%	82,923	34,164	117,087	60,105
301473	Instructional Designer 3	Anchorage	FT		APT - Exempt Employees	41.2%	55,104	22,703	77,807	39,941
301475	Research Technician 4	Anchorage	FT		PERS - Classified	51.8%	55,183	28,585	83,768	43,001
301476	Assistant Professor	Anchorage	FT		United Academics BU	30.8%	88,922	27,388	116,310	59,706
301477	Associate Professor	Anchorage	FT		United Academics BU	30.8%	87,766	27,032	114,798	58,930
301479	Instructor	Anchorage	FT		United Academics BU	30.8%	63,447	19,542	82,989	42,601
301480	Admin Specialist 2	Anchorage	FT		PERS - Classified	51.8%	68,625	35,548	104,173	53,476
301482	Term Instructor	Anchorage	FT		United Academics BU	30.8%	77,400	23,839	101,239	51,970
301485	Professor	Anchorage	FT		United Academics BU	30.8%	114,380	35,229	149,609	69,120
301486	Administrative Management 5	Anchorage	FT		APT - Exempt Employees	41.2%	161,594	66,577	228,171	117,128
301490	Student Svcs Professional 2	Anchorage	FT		PERS - Classified	51.8%	52,490	27,190	79,680	40,903
301494	Professor	Anchorage	FT		United Academics BU	30.8%	173,156	53,332	226,488	116,265
301496	Assistant Professor	Anchorage	FT		United Academics BU	30.8%	100,941	31,090	132,031	33,888
301498	Associate Professor	Anchorage	FT		United Academics BU	30.8%	99,654	30,693	130,347	66,912
301500	Associate Professor	Anchorage	FT		United Academics BU	30.8%	105,828	32,595	138,423	71,058
301502	Administrative Professional 1	Anchorage	FT		APT - Exempt Employees	41.2%	67,963	28,001	95,964	49,262
301504	Fiscal Technician 4	Anchorage	FT		PERS - Classified	51.8%	64,693	33,511	98,204	50,412
301505	Assistant Professor	Anchorage	FT		United Academics BU	30.8%	94,189	29,010	123,199	28,459
301506	Assistant Professor	Anchorage	FT		United Academics BU	30.8%	87,519	26,956	114,475	58,764
301507	Student Svcs Professional 2	Anchorage	FT		PERS - Classified	51.8%	52,490	27,190	79,680	40,903
301509	Associate Professor	Anchorage	FT		United Academics BU	30.8%	97,789	30,119	127,908	65,660
301510	Student Svcs Professional 3	Anchorage	FT		APT - Exempt Employees	41.2%	72,131	29,718	101,849	52,283
301512	Athletics Coach 2	Anchorage	FT		APT - Exempt Employees	41.2%	61,648	25,399	87,047	44,684
301514	Student Svcs Professional 2	Anchorage	PT		PERS - Classified	51.8%	54,114	28,031	82,145	42,168

Personal Services Expenditure Detail
University of Alaska

Component: Anchorage Campus (753)

RDU: University of Alaska Anchorage (235)

Notes:

1. If a position is split, an asterisk (*) will appear in the Split/Count column. If the split position is also counted in the component, two asterisks (**) will appear in the column.
2. "Pool" PCN refers to UA temporary positions, such as adjunct faculty; student employees; and other non-permanent staff. Multiple incumbents may share the same labor pool position number and pooled budget.

PCN	Job Class Title	Location	Time Status	Split/ Count	Employee Class	Benefit Rate	Annual	Annual	Total	UGF
							Budgeted Salary	Benefits	Costs	Estimate
301516	Student Svcs Professional 2	Anchorage	FT		PERS - Classified	51.8%	65,975	34,175	100,150	51,411
301517	Research Professional 3	Anchorage	FT		APT - Exempt Employees	41.2%	79,696	32,835	112,531	57,766
301518	Human Resources Technician 3	Anchorage	FT		PERS - Classified	51.8%	53,537	27,732	81,269	41,718
301520	Student Svcs Professional 2	Anchorage	FT		PERS - Classified	51.8%	51,464	26,658	78,122	40,103
301521	Human Resources Technician 3	Anchorage	FT		PERS - Classified	51.8%	54,584	28,275	82,859	42,534
301522	Associate Professor	Anchorage	FT		United Academics BU	30.8%	79,792	24,576	104,368	13,394
301523	Assistant Professor	Anchorage	FT		United Academics BU	30.8%	115,354	35,529	150,883	77,454
301524	Associate Vice Chancellor	Anchorage	FT		Sr. Administrator	25.1%	164,629	41,322	205,951	105,722
301536	Professor	Anchorage	FT		United Academics BU	30.8%	92,819	28,588	121,407	62,323
301538	Communications Specialist 5	Anchorage	FT		APT - Exempt Employees	41.2%	65,291	26,900	92,191	47,325
301544	Communications Specialist 4	Anchorage	FT		APT - Exempt Employees	41.2%	57,982	23,889	81,871	42,027
301554	Admin Specialist 2	Anchorage	FT		PERS - Classified	51.8%	67,300	34,861	102,161	52,443
301556	Associate Dean/Faculty	Anchorage	FT		Non-Represented Faculty	25.1%	215,579	54,110	269,689	138,441
301560	Professor	Anchorage	FT		United Academics BU	30.8%	102,279	31,502	133,781	68,675
301566	Assistant Professor	Anchorage	FT		United Academics BU	30.8%	82,764	25,491	108,255	55,571
301574	Associate Professor	Anchorage	FT		United Academics BU	30.8%	143,884	44,316	188,200	96,610
301578	Assistant Professor	Anchorage	FT		United Academics BU	30.8%	72,990	22,481	95,471	49,009
301580	Assistant Professor	Anchorage	FT		United Academics BU	30.8%	70,117	21,596	91,713	47,080
301583	Fiscal Manager 3	Anchorage	FT		APT - Exempt Employees	41.2%	94,421	38,901	133,322	68,439
301586	Assistant Professor	Anchorage	FT		United Academics BU	30.8%	74,823	23,045	97,868	50,239
301588	Administrative Professional 1	Anchorage	FT		APT - Exempt Employees	41.2%	71,447	29,436	100,883	51,787
301592	IS Net Technician 7	Anchorage	FT		PERS - Classified	51.8%	66,638	34,518	101,156	51,927
301594	Training & Development 2	Anchorage	FT		PERS - Classified	51.8%	40,599	21,030	61,629	31,637
301596	Term Instructor	Anchorage	FT		United Academics BU	30.8%	76,754	23,640	100,394	51,536
301598	Assistant Professor	Anchorage	FT		United Academics BU	30.8%	86,412	26,615	113,027	58,021
301600	Fiscal Professional 1	Anchorage	FT		PERS - Classified	51.8%	82,133	42,545	124,678	64,002
301610	Term Asst Professor	Anchorage	FT		United Academics BU	30.8%	74,823	23,045	97,868	50,239
301612	Associate Professor	Anchorage	FT		United Academics BU	30.8%	105,828	32,595	138,423	49,741
301616	Associate Director/Faculty	Anchorage	FT		Non-Represented Faculty	25.1%	153,500	38,529	192,029	98,575
301618	Professor	Anchorage	FT		United Academics BU	30.8%	115,024	35,427	150,451	77,232
301620	Assistant Professor	Anchorage	FT		United Academics BU	30.8%	87,304	26,890	114,194	58,620
301624	Assistant Professor	Anchorage	FT		United Academics BU	30.8%	86,776	26,727	113,503	58,265

Personal Services Expenditure Detail
University of Alaska

Component: Anchorage Campus (753)

RDU: University of Alaska Anchorage (235)

Notes:

1. If a position is split, an asterisk (*) will appear in the Split/Count column. If the split position is also counted in the component, two asterisks (**) will appear in the column.
2. "Pool" PCN refers to UA temporary positions, such as adjunct faculty; student employees; and other non-permanent staff. Multiple incumbents may share the same labor pool position number and pooled budget.

PCN	Job Class Title	Location	Time Status	Split/ Count	Employee Class	Benefit Rate	Annual Budgeted Salary	Annual Benefits	Total Costs	UGF Estimate
301626	Associate Professor	Anchorage	FT		United Academics BU	30.8%	115,024	35,427	150,451	77,232
301630	Assistant Professor	Anchorage	FT		United Academics BU	30.8%	90,739	27,948	118,687	60,926
301632	Assistant Professor	Anchorage	FT		United Academics BU	30.8%	76,198	23,469	99,667	12,790
301636	Assistant Professor	Anchorage	FT		United Academics BU	30.8%	86,413	26,615	113,028	58,022
301642	Assistant Professor	Anchorage	FT		United Academics BU	30.8%	95,246	29,336	124,582	63,952
301646	Instructor	Anchorage	FT		United Academics BU	30.8%	65,610	20,208	85,818	44,053
301648	Admin Generalist 3	Anchorage	FT		PERS - Classified	51.8%	42,616	22,075	64,691	33,208
301650	Physical Health Provider 2	Anchorage	FT		PERS - Classified	51.8%	45,468	23,552	69,020	35,431
301652	Assistant Professor	Anchorage	FT		United Academics BU	30.8%	74,823	23,045	97,868	50,239
301654	Associate Professor	Anchorage	FT		United Academics BU	30.8%	81,682	25,158	106,840	54,845
301656	Admin Generalist 4	Anchorage	FT		PERS - Classified	51.8%	47,083	24,389	71,472	36,689
301658	Professor	Anchorage	FT		United Academics BU	30.8%	71,915	22,150	94,065	48,287
301662	Assistant Professor	Anchorage	FT		United Academics BU	30.8%	80,172	24,693	104,865	53,831
301664	Professor	Anchorage	FT		United Academics BU	30.8%	96,302	29,661	125,963	64,661
301668	Administrative Professional 2	Anchorage	FT		APT - Exempt Employees	41.2%	73,605	30,325	103,930	53,351
301672	Fiscal Professional 1	Anchorage	FT		PERS - Classified	51.8%	54,200	28,076	82,276	42,235
301674	Instructional Designer 3	Anchorage	FT		APT - Exempt Employees	41.2%	85,467	35,212	120,679	61,949
301678	Assistant Professor	Anchorage	FT		United Academics BU	30.8%	92,729	28,561	121,290	62,262
301682	Assistant Professor	Anchorage	FT		United Academics BU	30.8%	71,620	22,059	93,679	48,089
301684	Director (Academic-Faculty)	Anchorage	FT		Non-Represented Faculty	25.1%	219,170	55,012	274,182	140,747
301686	Professor	Anchorage	FT		United Academics BU	30.8%	120,687	37,172	157,859	81,035
301688	Assistant Professor	Anchorage	FT		United Academics BU	30.8%	96,203	29,631	125,834	64,595
301690	Administrative Professional 2	Anchorage	FT		APT - Exempt Employees	41.2%	64,100	26,409	90,509	46,462
301692	Associate Professor	Anchorage	FT		United Academics BU	30.8%	164,835	50,769	215,604	110,678
301694	Professor	Anchorage	FT		United Academics BU	30.8%	103,963	32,021	135,984	69,805
301696	Associate Professor	Anchorage	FT		United Academics BU	30.8%	106,225	32,717	138,942	71,324
301697	Professor	Anchorage	FT		United Academics BU	30.8%	138,699	42,719	181,418	93,129
301698	Associate Professor	Anchorage	FT		United Academics BU	30.8%	105,829	32,595	138,424	51,872
301699	Administrative Professional 1	Anchorage	FT		APT - Exempt Employees	41.2%	96,281	39,668	135,949	69,787
301701	Assistant Professor	Anchorage	FT		United Academics BU	30.8%	86,957	26,783	113,740	58,387
301703	Admin Generalist 4	Anchorage	FT		PERS - Classified	51.8%	47,980	24,854	72,834	37,388
301705	Assistant Professor	Anchorage	FT		United Academics BU	30.8%	93,462	28,786	122,248	62,755

Personal Services Expenditure Detail
University of Alaska

Component: Anchorage Campus (753)

RDU: University of Alaska Anchorage (235)

Notes:

1. If a position is split, an asterisk (*) will appear in the Split/Count column. If the split position is also counted in the component, two asterisks (**) will appear in the column.
2. "Pool" PCN refers to UA temporary positions, such as adjunct faculty; student employees; and other non-permanent staff. Multiple incumbents may share the same labor pool position number and pooled budget.

PCN	Job Class Title	Location	Time Status	Split/ Count	Employee Class	Benefit Rate	Annual Budgeted Salary	Annual Benefits	Total Costs	UGF Estimate
301706	Professor	Anchorage	FT		United Academics BU	30.8%	126,317	38,906	165,223	84,815
301707	IS Net Technician 7	Anchorage	FT		PERS - Classified	51.8%	62,193	32,216	94,409	48,464
301708	Assistant Professor	Anchorage	FT		United Academics BU	30.8%	74,823	23,045	97,868	50,239
301709	Assistant Professor	Anchorage	FT		United Academics BU	30.8%	89,665	27,617	117,282	60,205
301710	Fiscal Professional 1	Anchorage	FT		PERS - Classified	51.8%	55,183	28,585	83,768	43,001
301711	Assistant Professor	Anchorage	FT		United Academics BU	30.8%	79,379	24,449	103,828	53,299
301713	Term Asst Professor	Anchorage	FT		United Academics BU	30.8%	89,962	27,708	117,670	60,404
301714	Professor	Anchorage	FT		United Academics BU	30.8%	138,155	42,552	180,707	92,763
301717	IS Professional 3A	Anchorage	FT		PERS - Classified	51.8%	69,310	35,903	105,213	54,009
301718	Assistant Professor	Anchorage	FT		United Academics BU	30.8%	78,141	24,067	102,208	52,467
301719	Assistant Professor	Anchorage	FT		United Academics BU	30.8%	68,037	20,955	88,992	45,683
301720	Professor	Anchorage	FT		United Academics BU	30.8%	97,722	30,098	127,820	65,615
301721	Professor	Anchorage	FT		United Academics BU	30.8%	111,490	34,339	145,829	52,402
301722	Dean (Academic)	Anchorage	FT		Sr. Administrator	25.1%	183,650	46,096	229,746	117,937
301723	Associate Professor	Anchorage	FT		United Academics BU	30.8%	115,437	35,555	150,992	77,510
301724	Assistant Professor	Anchorage	FT		United Academics BU	30.8%	62,126	19,135	81,261	41,714
301725	Research Professional 2	Anchorage	FT		APT - Exempt Employees	41.2%	72,131	29,718	101,849	52,283
301726	Fiscal Professional 3	Anchorage	FT		APT - Exempt Employees	41.2%	64,031	26,381	90,412	46,412
301727	Admin Specialist 4	Anchorage	FT		APT - Exempt Employees	41.2%	30,455	12,547	43,002	0
301729	Instructor	Anchorage	FT		United Academics BU	30.8%	61,945	19,079	81,024	41,593
301730	Student Svcs Professional 2	Anchorage	FT		PERS - Classified	51.8%	54,584	28,275	82,859	42,534
301731	Term Instructor	Anchorage	FT		United Academics BU	30.8%	82,836	25,513	108,349	55,620
301732	Communications Specialist 3	Anchorage	FT		PERS - Classified	51.8%	57,405	29,736	87,141	44,733
301733	Associate Professor	Anchorage	FT		United Academics BU	30.8%	63,032	19,414	82,446	30,472
301734	Development 4	Anchorage	FT		APT - Exempt Employees	41.2%	72,857	30,017	102,874	52,809
301735	Term Instructor	Anchorage	FT		United Academics BU	30.8%	44,850	13,814	58,664	30,114
301736	Admin Specialist 3	Anchorage	FT		APT - Exempt Employees	41.2%	57,405	23,651	81,056	31,207
301738	Admin Specialist 2	Anchorage	FT		PERS - Classified	51.8%	60,355	31,264	91,619	47,031
301740	Administrative Professional 1	Anchorage	FT		APT - Exempt Employees	41.2%	57,405	23,651	81,056	41,609
301743	Assistant Professor	Anchorage	FT		United Academics BU	30.8%	65,610	20,208	85,818	44,053
301744	Development 4	Anchorage	FT		APT - Exempt Employees	41.2%	101,239	41,710	142,949	73,381
301746	Administrative Professional 4	Anchorage	FT		APT - Exempt Employees	41.2%	112,972	46,544	159,516	81,886

Personal Services Expenditure Detail
University of Alaska

Component: Anchorage Campus (753)

RDU: University of Alaska Anchorage (235)

Notes:

1. If a position is split, an asterisk (*) will appear in the Split/Count column. If the split position is also counted in the component, two asterisks (**) will appear in the column.
2. "Pool" PCN refers to UA temporary positions, such as adjunct faculty; student employees; and other non-permanent staff. Multiple incumbents may share the same labor pool position number and pooled budget.

PCN	Job Class Title	Location	Time Status	Split/ Count	Employee Class	Benefit Rate	Annual	Annual	Total	UGF
							Budgeted Salary			
301748	Fiscal Manager 4	Anchorage	FT		APT - Exempt Employees	41.2%	155,246	63,961	219,207	112,527
301749	Administrative Professional 2	Anchorage	FT		APT - Exempt Employees	41.2%	76,555	31,541	108,096	55,489
301750	Director (Academic-Faculty)	Anchorage	FT		Non-Represented Faculty	25.1%	112,630	28,270	140,900	29,655
301751	IS Consultant 2A	Anchorage	FT		PERS - Classified	51.8%	51,464	26,658	78,122	40,103
301752	Instructor	Anchorage	FT		United Academics BU	30.8%	63,877	19,674	83,551	42,890
301753	Fac Svcs-MO&U Supervisor 6	Anchorage	FT		APT - Exempt Employees	41.2%	129,834	53,492	183,326	94,108
301756	Assistant Professor	Anchorage	FT		United Academics BU	30.8%	79,379	24,449	103,828	53,299
301757	Proc/ Cont Svcs Professional 1	Anchorage	FT		APT - Exempt Employees	41.2%	55,183	22,735	77,918	39,998
301759	Administrative Management 4	Anchorage	FT		APT - Exempt Employees	41.2%	104,295	42,970	147,265	75,596
301760	Professor	Anchorage	FT		United Academics BU	30.8%	89,483	27,561	117,044	60,083
301761	Training & Development 2	Anchorage	FT		PERS - Classified	51.8%	51,464	26,658	78,122	40,103
301762	IS Consultant 2A	Anchorage	FT		PERS - Classified	51.8%	60,910	31,551	92,461	47,464
301763	Training & Development 5	Anchorage	FT		APT - Exempt Employees	41.2%	74,310	30,616	104,926	53,862
301764	IS Consultant 2A	Anchorage	FT		PERS - Classified	51.8%	54,584	28,275	82,859	42,534
301766	Instructor	Anchorage	FT		United Academics BU	30.8%	56,018	17,254	73,272	37,613
301768	Assistant Professor	Anchorage	FT		United Academics BU	30.8%	93,099	28,674	121,773	62,511
301770	Assistant Professor	Anchorage	FT		United Academics BU	30.8%	104,805	32,280	137,085	70,371
301774	Instructor	Anchorage	FT		United Academics BU	30.8%	61,400	18,911	80,311	41,227
301776	Assistant Professor	Anchorage	FT		United Academics BU	30.8%	96,203	29,631	125,834	64,595
301778	Admin Specialist 2	Anchorage	FT		PERS - Classified	51.8%	51,464	26,658	78,122	40,103
302005	Admin Generalist 3	Anchorage	FT		PERS - Classified	51.8%	47,083	24,389	71,472	36,689
302030	Student Svcs Professional 2	Anchorage	FT		PERS - Classified	51.8%	52,490	27,190	79,680	40,903
302125	Professor	Anchorage	FT	**	United Academics BU	30.8%	79,379	24,449	103,828	53,299
302165	Administrative Management 3	Anchorage	FT		APT - Exempt Employees	41.2%	51,977	21,415	73,392	0
302190	Director (Admin)	Anchorage	FT		Sr. Administrator	25.1%	164,072	41,182	205,254	105,364
303002	Fiscal Technician 3	Anchorage	FT		PERS - Classified	51.8%	52,490	27,190	79,680	40,903
303020	Admin Specialist 3	Anchorage	FT		APT - Exempt Employees	41.2%	71,447	29,436	100,883	51,787
303025	Associate Dean/Faculty	Anchorage	FT		Non-Represented Faculty	25.1%	199,529	50,082	249,611	128,134
303045	Research Professional 1	Anchorage	FT		PERS - Classified	51.8%	52,500	27,195	79,695	40,910
303052	Assistant Professor	Anchorage	FT		United Academics BU	30.8%	74,659	22,995	97,654	50,129
303075	Research Professional 2	Anchorage	FT		APT - Exempt Employees	41.2%	120,800	49,770	170,570	43,780
303080	Term Instructor	Anchorage	FT		United Academics BU	30.8%	53,300	16,416	69,716	35,788

Personal Services Expenditure Detail
University of Alaska

Component: Anchorage Campus (753)

RDU: University of Alaska Anchorage (235)

Notes:

1. If a position is split, an asterisk (*) will appear in the Split/Count column. If the split position is also counted in the component, two asterisks (**) will appear in the column.
2. "Pool" PCN refers to UA temporary positions, such as adjunct faculty; student employees; and other non-permanent staff. Multiple incumbents may share the same labor pool position number and pooled budget.

PCN	Job Class Title	Location	Time Status	Split/ Count	Employee Class	Benefit Rate	Annual	Annual	Total	UGF
							Budgeted Salary	Benefits	Costs	Estimate
303085	Term Asst Professor	Anchorage	FT		United Academics BU	30.8%	88,905	27,383	116,288	26,862
303091	Communications Specialist 2	Anchorage	FT		PERS - Classified	51.8%	48,000	24,864	72,864	37,404
303095	Administrative Management 5	Anchorage	FT		APT - Exempt Employees	41.2%	159,948	65,899	225,847	115,935
303101	IS Manager 3	Anchorage	FT		APT - Exempt Employees	41.2%	114,041	46,985	161,026	82,660
303110	Fiscal Technician 3	Anchorage	FT		PERS - Classified	51.8%	52,490	27,190	79,680	40,903
303130	Associate Professor	Anchorage	FT		United Academics BU	30.8%	133,879	41,235	175,114	89,892
303135	Administrative Professional 3	Anchorage	FT		APT - Exempt Employees	41.2%	109,617	45,162	154,779	79,454
303145	Professor	Anchorage	FT		United Academics BU	30.8%	123,934	38,172	162,106	83,215
303165	Physical Health Provider 5	Anchorage	FT		APT - Exempt Employees	41.2%	99,873	41,148	141,021	0
303192	Fiscal Professional 1	Anchorage	FT		PERS - Classified	51.8%	59,756	30,954	90,710	46,565
303193	Director (Academic-Faculty)	Anchorage	FT		Non-Represented Faculty	25.1%	173,383	43,519	216,902	80,415
303212	Senior Administrator Director	Anchorage	FT		Sr. Administrator	25.1%	155,246	38,967	194,213	99,697
303213	Admin Specialist 2	Anchorage	FT		PERS - Classified	51.8%	74,310	38,493	112,803	57,906
303213	Administrative Professional 4	Anchorage	FT		APT - Exempt Employees	41.2%	99,300	40,912	140,212	71,976
303215	Associate Professor	Anchorage	FT		United Academics BU	30.8%	89,384	27,530	116,914	30,008
303222	Communications Specialist 4	Anchorage	FT		APT - Exempt Employees	41.2%	57,982	23,889	81,871	42,027
303227	Associate Professor	Anchorage	FT		United Academics BU	30.8%	100,892	31,075	131,967	67,743
303228	Administrative Management 1	Anchorage	FT		APT - Exempt Employees	41.2%	71,447	29,436	100,883	51,787
303230	Director (Academic-Faculty)	Anchorage	FT		Non-Represented Faculty	25.1%	141,974	35,635	177,609	72,939
303231	Student Svcs Professional 3	Anchorage	FT		APT - Exempt Employees	41.2%	60,355	24,866	85,221	43,747
303232	Assistant Professor	Anchorage	FT		United Academics BU	30.8%	75,037	23,111	98,148	50,383
303234	Campus Services Retail 4	Anchorage	FT		APT - Exempt Employees	41.2%	51,500	21,218	72,718	0
303235	Administrative Management 1	Anchorage	FT		APT - Exempt Employees	41.2%	94,421	38,901	133,322	68,439
303241	Admin Specialist 3	Anchorage	FT		APT - Exempt Employees	41.2%	68,625	28,274	96,899	49,742
303242	Admin Specialist 4	Anchorage	FT		APT - Exempt Employees	41.2%	91,643	37,757	129,400	66,426
303243	Risk Management 4	Anchorage	FT		APT - Exempt Employees	41.2%	88,951	36,648	125,599	64,474
303247	Admin Generalist 2	Anchorage	FT		PERS - Classified	51.8%	47,083	24,389	71,472	36,689
304005	Research Professional 1	Anchorage	FT		APT - Exempt Employees	41.2%	60,355	24,866	85,221	43,747
304030	Research Professional 3	Anchorage	FT		APT - Exempt Employees	41.2%	64,741	26,673	91,414	0
304036	Professor	Anchorage	FT		United Academics BU	30.8%	105,300	32,432	137,732	70,703
304045	Director (Academic-Faculty)	Anchorage	FT		Non-Represented Faculty	25.1%	146,078	36,666	182,744	93,809
304056	Research Professional 5	Anchorage	FT		APT - Exempt Employees	41.2%	110,728	45,620	156,348	40,130

Personal Services Expenditure Detail
University of Alaska

Component: Anchorage Campus (753)

RDU: University of Alaska Anchorage (235)

Notes:

1. If a position is split, an asterisk (*) will appear in the Split/Count column. If the split position is also counted in the component, two asterisks (**) will appear in the column.
2. "Pool" PCN refers to UA temporary positions, such as adjunct faculty; student employees; and other non-permanent staff. Multiple incumbents may share the same labor pool position number and pooled budget.

PCN	Job Class Title	Location	Time Status	Split/ Count	Employee Class	Benefit Rate	Annual	Annual	Total	UGF
							Budgeted Salary	Benefits	Costs	Estimate
304065	Associate Professor	Anchorage	FT		United Academics BU	30.8%	88,344	27,210	115,554	59,318
304072	Assistant Professor	Anchorage	FT		United Academics BU	30.8%	93,099	28,674	121,773	62,511
304073	Associate Professor	Anchorage	FT		Non-Represented Faculty	25.1%	83,513	20,962	104,475	48,268
304075	Admin Generalist 4	Anchorage	FT		PERS - Classified	51.8%	50,438	26,127	76,565	39,304
304105	Student Svcs Professional 2	Anchorage	FT		PERS - Classified	51.8%	54,584	28,275	82,859	42,534
304110	Admin Generalist 3	Anchorage	FT		PERS - Classified	51.8%	47,554	24,633	72,187	2,935
304120	Administrative Management 1	Anchorage	FT		APT - Exempt Employees	41.2%	56,294	23,193	79,487	40,804
304125	Environmental Health/Safety 3	Anchorage	FT		APT - Exempt Employees	41.2%	79,696	32,835	112,531	57,766
304130	Fiscal Manager 1	Anchorage	FT		APT - Exempt Employees	41.2%	94,421	38,901	133,322	68,439
304135	Athletics Facs, Ops & Pgms 1	Anchorage	FT		PERS - Classified	51.8%	44,450	23,025	67,475	34,637
304151	Fiscal Professional 1	Anchorage	PT		PERS - Classified	51.8%	40,600	21,031	61,631	31,637
304160	Admin Specialist 2	Anchorage	FT		PERS - Classified	51.8%	84,590	43,818	128,408	65,916
304165	Fiscal Professional 3	Anchorage	FT		APT - Exempt Employees	41.2%	83,757	34,508	118,265	60,710
304170	Training & Development 4	Anchorage	FT		APT - Exempt Employees	41.2%	62,193	25,624	87,817	45,079
304171	Admin Specialist 3	Anchorage	FT		APT - Exempt Employees	41.2%	57,405	23,651	81,056	41,609
304172	Admin Generalist 3	Anchorage	FT		PERS - Classified	51.8%	36,060	18,679	54,739	28,100
304173	Coordinator (Nonexempt)	Anchorage	FT		PERS - Classified	51.8%	50,438	26,127	76,565	39,304
304752	Associate Professor	Anchorage	FT		United Academics BU	30.8%	90,672	27,927	118,599	60,881
304753	Admin Specialist 1	Anchorage	FT		PERS - Classified	51.8%	35,400	18,337	53,737	0
305010	Professor	Anchorage	FT		United Academics BU	30.8%	128,777	39,663	168,440	86,467
305015	Library Technician 3	Anchorage	FT		PERS - Classified	51.8%	38,619	20,005	58,624	30,094
305025	Professor	Anchorage	FT		United Academics BU	30.8%	133,752	41,196	174,948	89,807
305035	Library Technician 1	Anchorage	FT		PERS - Classified	51.8%	38,200	19,788	57,988	29,767
305040	Associate Professor	Anchorage	FT		United Academics BU	30.8%	98,729	30,409	129,138	66,291
305075	Associate Professor	Anchorage	FT		United Academics BU	30.8%	95,625	29,453	125,078	64,207
305085	Assistant Professor	Anchorage	FT		United Academics BU	30.8%	85,719	26,401	112,120	57,556
305090	Library Technician 4	Anchorage	FT		PERS - Classified	51.8%	50,438	26,127	76,565	39,304
305100	Library Technician 3	Anchorage	FT		PERS - Classified	51.8%	59,756	30,954	90,710	46,565
305125	Library Technician 2	Anchorage	PT		PERS - Classified	51.8%	20,100	10,412	30,512	15,663
305140	Professor	Anchorage	FT		United Academics BU	30.8%	120,918	37,243	158,161	81,190
305160	Library Technician 2	Anchorage	FT		PERS - Classified	51.8%	35,242	18,255	53,497	27,462
305165	Dean (Academic)	Anchorage	FT		Sr. Administrator	25.1%	195,832	49,154	244,986	125,760

Personal Services Expenditure Detail
University of Alaska

Component: Anchorage Campus (753)

RDU: University of Alaska Anchorage (235)

Notes:

1. If a position is split, an asterisk (*) will appear in the Split/Count column. If the split position is also counted in the component, two asterisks (**) will appear in the column.
2. "Pool" PCN refers to UA temporary positions, such as adjunct faculty; student employees; and other non-permanent staff. Multiple incumbents may share the same labor pool position number and pooled budget.

PCN	Job Class Title	Location	Time Status	Split/ Count	Employee Class	Benefit Rate	Annual	Annual	Total	UGF
							Budgeted Salary	Benefits	Costs	Estimate
305175	Student Svcs Professional 2	Anchorage	FT		PERS - Classified	51.8%	52,490	27,190	79,680	40,903
305185	Dean (Academic)	Anchorage	FT		Sr. Administrator	25.1%	222,290	55,795	278,085	142,751
305210	Administrative Management 3	Anchorage	FT		APT - Exempt Employees	41.2%	79,696	32,835	112,531	57,766
305215	Fiscal Professional 1	Anchorage	FT		PERS - Classified	51.8%	68,100	35,276	103,376	53,067
305220	IS Manager 4	Anchorage	FT		APT - Exempt Employees	41.2%	143,406	59,083	202,489	103,945
305225	Associate Dean/Faculty	Anchorage	FT		Non-Represented Faculty	25.1%	178,584	44,825	223,409	114,684
305235	Director (Academic-Faculty)	Anchorage	FT		Non-Represented Faculty	25.1%	174,652	43,838	218,490	112,159
305240	Fiscal Professional 1	Anchorage	PT		PERS - Classified	51.8%	49,300	25,537	74,837	38,417
305250	Director (Academic-Faculty)	Anchorage	FT		Non-Represented Faculty	25.1%	166,039	41,676	207,715	106,628
305254	Administrative Management 4	Anchorage	FT		APT - Exempt Employees	41.2%	111,818	46,069	157,887	81,049
305258	Dean (Academic)	Anchorage	FT		Sr. Administrator	25.1%	287,859	72,253	360,112	184,858
305259	Associate Professor	Anchorage	FT		United Academics BU	30.8%	117,352	36,144	153,496	78,795
305266	Human Resources Technician 4	Anchorage	FT		PERS - Classified	51.8%	75,101	38,902	114,003	58,522
305268	Fiscal Technician 4	Anchorage	FT		PERS - Classified	51.8%	59,115	30,622	89,737	46,065
305269	Admin Specialist 2	Anchorage	FT		PERS - Classified	51.8%	57,500	29,785	87,285	0
305272	Admin Generalist 4	Anchorage	FT		PERS - Classified	51.8%	47,083	24,389	71,472	36,689
305273	Admin Specialist 2	Anchorage	FT		PERS - Classified	51.8%	63,389	32,836	96,225	49,396
305276	Provost	Anchorage	FT		Officer	25.1%	224,513	56,353	280,866	144,179
305278	Administrative Management 4	Anchorage	FT		APT - Exempt Employees	41.2%	124,800	51,418	176,218	0
305281	Associate Professor	Anchorage	FT		United Academics BU	30.8%	103,953	32,018	135,971	69,799
305283	Student Svcs Professional 3	Anchorage	FT		APT - Exempt Employees	41.2%	52,989	21,831	74,820	38,408
305286	IS Professional 3A	Anchorage	FT		APT - Exempt Employees	41.2%	93,460	38,506	131,966	67,743
305287	Student Svcs Professional 3	Anchorage	FT		APT - Exempt Employees	41.2%	67,300	27,728	95,028	48,781
305289	IS Consultant 3A	Anchorage	FT		APT - Exempt Employees	41.2%	66,638	27,455	94,093	48,301
305292	Admin Specialist 3	Anchorage	FT		APT - Exempt Employees	41.2%	43,546	17,941	61,487	31,564
305296	IS Consultant 2A	Anchorage	FT		PERS - Classified	51.8%	54,584	28,275	82,859	42,534
305297	IS Professional 3A	Anchorage	FT		APT - Exempt Employees	41.2%	104,979	43,251	148,230	76,092
305298	IS Consultant 5A	Anchorage	FT		APT - Exempt Employees	41.2%	91,643	37,757	129,400	66,426
305307	Administrative Professional 3	Anchorage	FT		APT - Exempt Employees	41.2%	87,781	36,166	123,947	63,626
305309	Fiscal Professional 2	Anchorage	FT		APT - Exempt Employees	41.2%	70,720	29,137	99,857	51,260
305310	IS Manager 4	Anchorage	FT		APT - Exempt Employees	41.2%	146,270	60,263	206,533	106,021
305311	IS Professional 5A	Anchorage	FT		APT - Exempt Employees	41.2%	107,437	44,264	151,701	77,874

Personal Services Expenditure Detail
University of Alaska

Component: Anchorage Campus (753)

RDU: University of Alaska Anchorage (235)

Notes:

1. If a position is split, an asterisk (*) will appear in the Split/Count column. If the split position is also counted in the component, two asterisks (**) will appear in the column.
2. "Pool" PCN refers to UA temporary positions, such as adjunct faculty; student employees; and other non-permanent staff. Multiple incumbents may share the same labor pool position number and pooled budget.

PCN	Job Class Title	Location	Time Status	Split/ Count	Employee Class	Benefit Rate	Annual	Annual	Total	UGF
							Budgeted Salary	Benefits	Costs	Estimate
305316	Fiscal Professional 1	Anchorage	FT		PERS - Classified	51.8%	53,535	27,731	81,266	20,441
305318	Library Technician 3	Anchorage	FT		PERS - Classified	51.8%	43,428	22,496	65,924	33,841
305319	Communications Specialist 4	Anchorage	FT		APT - Exempt Employees	41.2%	61,342	25,273	86,615	44,463
305320	IS Professional 1A	Anchorage	FT		PERS - Classified	51.8%	73,605	38,127	111,732	57,356
305322	Dean (Academic)	Anchorage	FT		Sr. Administrator	25.1%	149,390	37,497	186,887	95,936
305324	Assistant Professor	Anchorage	FT		United Academics BU	30.8%	83,322	25,663	108,985	55,946
305331	Library Technician 2	Anchorage	FT		PERS - Classified	51.8%	34,879	18,067	52,946	27,179
305332	Library Technician 4	Anchorage	FT		PERS - Classified	51.8%	75,849	39,290	115,139	0
305334	Administrative Professional 4	Anchorage	FT		APT - Exempt Employees	41.2%	88,950	36,647	125,597	64,474
305505	Admin Specialist 2	Anchorage	FT		PERS - Classified	51.8%	53,003	27,456	80,459	41,302
305530	Instructional Designer 4	Anchorage	FT		APT - Exempt Employees	41.2%	83,800	34,526	118,326	60,741
305545	Assistant Professor	Anchorage	FT		United Academics BU	30.8%	74,327	22,893	97,220	49,906
305575	Admin Generalist 3	Anchorage	FT		PERS - Classified	51.8%	28,060	14,535	42,595	21,866
305615	Admin Generalist 4	Anchorage	PT		PERS - Classified	51.8%	25,300	13,105	38,405	0
305655	Training & Development 2	Anchorage	FT		PERS - Classified	51.8%	50,500	26,159	76,659	39,352
305690	IS Professional 5A	Anchorage	FT		APT - Exempt Employees	41.2%	106,390	43,833	150,223	77,115
305700	IS Net Technician 7	Anchorage	FT		PERS - Classified	51.8%	65,975	34,175	100,150	51,411
305709	Maint Service Worker IV (MSW4)	Anchorage	FT		AHECTE- Labor Trades & Crafts	46.0%	57,100	26,266	83,366	0
305709	Student Svcs Professional 2	Anchorage	FT		PERS - Classified	51.8%	53,600	27,765	81,365	41,768
305710	Associate Professor	Anchorage	FT		United Academics BU	30.8%	91,575	28,205	119,780	61,488
305712	Library Technician 4	Anchorage	FT		PERS - Classified	51.8%	55,183	28,585	83,768	43,001
305713	Assistant Professor	Anchorage	FT		United Academics BU	30.8%	86,027	26,496	112,523	57,762
305715	Professor	Anchorage	FT		United Academics BU	30.8%	132,893	40,931	173,824	89,230
305716	Human Resources Technician 3	Anchorage	FT		PERS - Classified	51.8%	50,438	26,127	76,565	39,304
305717	IS Consultant 3A	Anchorage	FT		APT - Exempt Employees	41.2%	60,355	24,866	85,221	43,747
305718	Dean (Academic)	Anchorage	FT		Sr. Administrator	25.1%	148,193	37,196	185,389	95,167
305720	Student Services Manager 2B	Anchorage	FT		APT - Exempt Employees	41.2%	78,136	32,192	110,328	56,635
305725	Admin Generalist 3	Anchorage	FT		PERS - Classified	51.8%	41,739	21,621	63,360	28,297
305726	Associate Professor	Anchorage	FT		United Academics BU	30.8%	121,000	37,268	158,268	81,245
305728	Director (Academic-Faculty)	Anchorage	FT		Non-Represented Faculty	25.1%	120,667	30,287	150,954	46,494
305729	Fiscal Professional 1	Anchorage	FT		PERS - Classified	51.8%	59,115	30,622	89,737	45,605
305730	Admin Specialist 3	Anchorage	FT		APT - Exempt Employees	41.2%	65,975	27,182	93,157	47,821

Personal Services Expenditure Detail
University of Alaska

Component: Anchorage Campus (753)

RDU: University of Alaska Anchorage (235)

Notes:

1. If a position is split, an asterisk (*) will appear in the Split/Count column. If the split position is also counted in the component, two asterisks (**) will appear in the column.
2. "Pool" PCN refers to UA temporary positions, such as adjunct faculty; student employees; and other non-permanent staff. Multiple incumbents may share the same labor pool position number and pooled budget.

PCN	Job Class Title	Location	Time Status	Split/ Count	Employee Class	Benefit Rate	Annual	Annual	Total	UGF
							Budgeted Salary	Benefits	Costs	Estimate
305731	Admin Specialist 3	Anchorage	FT		APT - Exempt Employees	41.2%	58,581	24,135	82,716	42,461
305732	Professor	Anchorage	FT		Non-Represented Faculty	25.1%	184,120	46,214	230,334	118,239
305733	Communications Specialist 3	Anchorage	FT		PERS - Classified	51.8%	53,003	27,456	80,459	41,302
305734	Research Technician 4	Anchorage	FT		PERS - Classified	51.8%	65,291	33,821	99,112	50,878
305735	Professor	Anchorage	FT		United Academics BU	30.8%	119,003	36,653	155,656	79,904
305736	Associate Professor	Anchorage	FT		United Academics BU	30.8%	91,575	28,205	119,780	61,488
305737	Associate Professor	Anchorage	FT		United Academics BU	30.8%	92,411	28,463	120,874	22,338
305741	Assistant Professor	Anchorage	FT		United Academics BU	30.8%	85,719	26,401	112,120	57,556
305743	Vice Chancellor (Academic)	Anchorage	FT		Sr. Administrator	25.1%	208,484	52,329	260,813	133,885
305744	Admin Generalist 4	Anchorage	FT		PERS - Classified	51.8%	47,082	24,388	71,470	36,688
305745	IS Consultant 4A	Anchorage	FT		APT - Exempt Employees	41.2%	74,310	30,616	104,926	53,862
305746	Instructional Designer 3	Anchorage	FT		APT - Exempt Employees	41.2%	75,101	30,942	106,043	54,436
305747	IS Professional 5A	Anchorage	FT		APT - Exempt Employees	41.2%	94,421	38,901	133,322	68,439
305752	Fiscal Professional 2	Anchorage	FT		APT - Exempt Employees	41.2%	67,300	27,728	95,028	48,781
305753	Student Svcs Professional 2	Anchorage	FT		PERS - Classified	51.8%	58,581	30,345	88,926	45,649
305760	Professor	Anchorage	FT		United Academics BU	30.8%	117,831	36,292	154,123	79,117
305762	Student Svcs Professional 2	Anchorage	FT		PERS - Classified	51.8%	43,428	22,496	65,924	33,841
305763	Administrative Professional 2	Anchorage	FT		APT - Exempt Employees	41.2%	88,950	36,647	125,597	64,474
305764	Administrative Management 4	Anchorage	FT		APT - Exempt Employees	41.2%	137,764	56,759	194,523	99,856
305770	Research Professional 3	Anchorage	FT		APT - Exempt Employees	41.2%	47,083	19,398	66,481	34,127
305772	Term Asst Professor	Anchorage	FT		United Academics BU	30.8%	82,836	25,513	108,349	55,620
305773	Library Technician 2	Anchorage	FT		PERS - Classified	51.8%	36,332	18,820	55,152	28,312
305774	Library Technician 2	Anchorage	FT		PERS - Classified	51.8%	34,879	18,067	52,946	27,179
306080	Administrative Management 5	Anchorage	FT		APT - Exempt Employees	41.2%	128,553	52,964	181,517	93,179
306085	Stu Svcs Profess 2 (Exempt)	Anchorage	FT		APT - Exempt Employees	41.2%	52,490	21,626	74,116	38,046
306100	Student Svcs Technician 3	Anchorage	FT		PERS - Classified	51.8%	47,980	24,854	72,834	37,388
306102	Student Svcs Technician 3	Anchorage	FT		PERS - Classified	51.8%	47,980	24,854	72,834	37,388
306104	Administrative Management 5	Anchorage	FT		APT - Exempt Employees	41.2%	37,828	15,585	53,413	0
306105	IS Professional 3A	Anchorage	FT		APT - Exempt Employees	41.2%	72,900	30,035	102,935	52,840
306106	Admin Specialist 1	Anchorage	FT		PERS - Classified	51.8%	49,476	25,629	75,105	38,554
306110	Stu Svcs Profess 3 (NonExempt)	Anchorage	PT		PERS - Classified	51.8%	22,737	11,778	34,515	17,718
306125	Student Svcs Technician 3	Anchorage	FT		PERS - Classified	51.8%	47,980	24,854	72,834	37,388

Personal Services Expenditure Detail
University of Alaska

Component: Anchorage Campus (753)

RDU: University of Alaska Anchorage (235)

Notes:

1. If a position is split, an asterisk (*) will appear in the Split/Count column. If the split position is also counted in the component, two asterisks (**) will appear in the column.
2. "Pool" PCN refers to UA temporary positions, such as adjunct faculty; student employees; and other non-permanent staff. Multiple incumbents may share the same labor pool position number and pooled budget.

PCN	Job Class Title	Location	Time Status	Split/ Count	Employee Class	Benefit Rate	Annual	Annual	Total	UGF
							Budgeted Salary	Benefits	Costs	Estimate
306130	Fiscal Manager 2	Anchorage	FT		APT - Exempt Employees	41.2%	66,638	27,455	94,093	48,301
306145	Student Svcs Technician 3	Anchorage	FT		PERS - Classified	51.8%	47,980	24,854	72,834	37,388
306180	Admin Specialist 3	Anchorage	FT		APT - Exempt Employees	41.2%	70,720	29,137	99,857	51,260
306181	Athletics Coach 2	Anchorage	FT		APT - Exempt Employees	41.2%	58,581	24,135	82,716	42,461
306182	Athletics Coach 2	Anchorage	FT		APT - Exempt Employees	41.2%	80,530	33,178	113,708	58,371
306183	Athletics Training 2	Anchorage	FT		APT - Exempt Employees	41.2%	45,901	18,911	64,812	33,270
306184	Athletics Coach 2	Anchorage	FT		APT - Exempt Employees	41.2%	54,182	22,323	76,505	39,273
306185	Athletics Coach 2	Anchorage	FT		APT - Exempt Employees	41.2%	64,693	26,654	91,347	46,892
306186	Athletics Coach 2	Anchorage	FT		APT - Exempt Employees	41.2%	45,682	18,821	64,503	33,112
306188	Athletics Coach 2	Anchorage	FT		APT - Exempt Employees	41.2%	64,031	26,381	90,412	46,412
306189	Fiscal Manager 1	Anchorage	FT		APT - Exempt Employees	41.2%	70,014	28,846	98,860	43,136
306190	Athletics Coach 2	Anchorage	FT		APT - Exempt Employees	41.2%	60,912	25,096	86,008	44,151
306191	Assistant Coach	Anchorage	FT		APT - Exempt Employees	41.2%	57,405	23,651	81,056	41,609
306192	Communications Specialist 2	Anchorage	FT		PERS - Classified	51.8%	60,355	31,264	91,619	47,031
306210	Administrative Management 3	Anchorage	FT		APT - Exempt Employees	41.2%	99,506	40,996	140,502	72,125
306240	Fiscal Manager 3	Anchorage	FT		APT - Exempt Employees	41.2%	103,227	42,530	145,757	74,822
306245	Athletics Coach 3	Anchorage	FT		APT - Exempt Employees	41.2%	67,963	28,001	95,964	49,262
306250	Communications Specialist 4	Anchorage	FT		APT - Exempt Employees	41.2%	69,309	28,555	97,864	50,237
306270	Fiscal Technician 2	Anchorage	FT		PERS - Classified	51.8%	49,476	25,629	75,105	38,554
306275	Athletics Coach 3	Anchorage	FT		APT - Exempt Employees	41.2%	117,525	48,420	165,945	85,186
306280	Admin Generalist 3	Anchorage	FT		PERS - Classified	51.8%	46,121	23,891	70,012	35,940
306285	Administrative Management 3	Anchorage	FT		APT - Exempt Employees	41.2%	72,857	30,017	102,874	52,809
306290	Athletics Coach 3	Anchorage	FT		APT - Exempt Employees	41.2%	78,136	32,192	110,328	56,635
306295	Athletics Coach 3	Anchorage	FT		APT - Exempt Employees	41.2%	76,556	31,541	108,097	55,490
306310	Student Svcs Manager 3	Anchorage	FT		APT - Exempt Employees	41.2%	110,727	45,620	156,347	80,258
306312	Admin Specialist 1	Anchorage	FT		PERS - Classified	51.8%	54,584	28,275	82,859	42,534
306313	Admin Generalist 4	Anchorage	FT		PERS - Classified	51.8%	48,963	25,363	74,326	38,154
306316	Student Svcs Technician 3	Anchorage	FT		PERS - Classified	51.8%	47,980	24,854	72,834	37,388
306318	Student Svcs Professional 2	Anchorage	FT		PERS - Classified	51.8%	54,114	28,031	82,145	42,168
306320	Student Svcs Professional 3	Anchorage	FT		APT - Exempt Employees	41.2%	62,192	25,623	87,815	22,539
306321	Student Svcs Professional 2	Anchorage	FT		PERS - Classified	51.8%	54,114	28,031	82,145	42,168
306329	Student Svcs Manager 2	Anchorage	FT		APT - Exempt Employees	41.2%	67,962	28,000	95,962	49,261

Personal Services Expenditure Detail
University of Alaska

Component: Anchorage Campus (753)

RDU: University of Alaska Anchorage (235)

Notes:

1. If a position is split, an asterisk (*) will appear in the Split/Count column. If the split position is also counted in the component, two asterisks (**) will appear in the column.
2. "Pool" PCN refers to UA temporary positions, such as adjunct faculty; student employees; and other non-permanent staff. Multiple incumbents may share the same labor pool position number and pooled budget.

PCN	Job Class Title	Location	Time Status	Split/ Count	Employee Class	Benefit Rate	Annual	Annual	Total	UGF
							Budgeted Salary	Benefits	Costs	Estimate
306330	Student Svcs Professional 3	Anchorage	FT		APT - Exempt Employees	41.2%	57,405	23,651	81,056	41,609
306331	Communications Specialist 3	Anchorage	FT		PERS - Classified	51.8%	54,114	28,031	82,145	42,168
306333	Student Svcs Professional 3	Anchorage	FT		APT - Exempt Employees	41.2%	57,405	23,651	81,056	41,609
306335	Student Svcs Manager 3	Anchorage	FT		APT - Exempt Employees	41.2%	109,616	45,162	154,778	79,453
306338	Student Svcs Manager 2	Anchorage	FT		APT - Exempt Employees	41.2%	76,555	31,541	108,096	55,489
306340	Fiscal Manager 1	Anchorage	FT		APT - Exempt Employees	41.2%	67,300	27,728	95,028	48,781
306344	Student Svcs Technician 3	Anchorage	FT		PERS - Classified	51.8%	49,476	25,629	75,105	38,554
306348	Admin Specialist 2	Anchorage	FT		PERS - Classified	51.8%	54,114	28,031	82,145	42,168
306349	Student Svcs Technician 3	Anchorage	FT		PERS - Classified	51.8%	47,980	24,854	72,834	37,388
306351	Student Svcs Technician 3	Anchorage	FT		PERS - Classified	51.8%	47,980	24,854	72,834	37,388
306352	Student Svcs Professional 4	Anchorage	FT		APT - Exempt Employees	41.2%	69,308	28,555	97,863	50,237
306353	Student Svcs Professional 2	Anchorage	FT		PERS - Classified	51.8%	52,490	27,190	79,680	40,903
306355	Fiscal Professional 2	Anchorage	FT		APT - Exempt Employees	41.2%	65,975	27,182	93,157	47,821
306357	Student Svcs Professional 4	Anchorage	FT		APT - Exempt Employees	41.2%	67,300	27,728	95,028	48,781
306360	Student Svcs Professional 2	Anchorage	FT		PERS - Classified	51.8%	54,584	28,275	82,859	42,534
306361	Student Svcs Professional 2	Anchorage	FT		PERS - Classified	51.8%	51,977	26,924	78,901	40,503
306364	Administrative Management 2	Anchorage	FT		APT - Exempt Employees	41.2%	117,482	48,403	165,885	85,155
306365	Admin Generalist 3	Anchorage	FT		PERS - Classified	51.8%	48,963	25,363	74,326	38,154
306366	Athletics Training 3	Anchorage	FT		APT - Exempt Employees	41.2%	75,849	31,250	107,099	54,978
306367	Assistant Professor	Anchorage	FT		United Academics BU	30.8%	93,099	28,674	121,773	62,511
306368	Athletics Coach 3	Anchorage	FT		APT - Exempt Employees	41.2%	150,480	61,998	212,478	109,073
306369	Athletics Coach 3	Anchorage	FT		APT - Exempt Employees	41.2%	82,132	33,838	115,970	59,532
306370	Student Svcs Manager 2	Anchorage	FT		APT - Exempt Employees	41.2%	64,031	26,381	90,412	46,412
306371	Training & Development 2	Anchorage	FT		PERS - Classified	51.8%	48,450	25,097	73,547	37,754
306372	Athletics Coach 3	Anchorage	FT		APT - Exempt Employees	41.2%	150,480	61,998	212,478	109,073
306375	Fiscal Professional 3	Anchorage	FT		APT - Exempt Employees	41.2%	77,303	31,849	109,152	56,032
306379	Admin Specialist 1	Anchorage	FT		PERS - Classified	51.8%	54,114	28,031	82,145	42,168
306380	Student Svcs Professional 2	Anchorage	FT		PERS - Classified	51.8%	52,490	27,190	79,680	40,903
306381	Student Svcs Manager 2	Anchorage	FT		APT - Exempt Employees	41.2%	67,963	28,001	95,964	49,262
306383	Administrative Management 5	Anchorage	FT		APT - Exempt Employees	41.2%	135,092	55,658	190,750	0
306384	Student Svcs Professional 4	Anchorage	FT		APT - Exempt Employees	41.2%	66,638	27,455	94,093	48,301
306387	Admin Specialist 3	Anchorage	FT		APT - Exempt Employees	41.2%	59,115	24,355	83,470	42,848

Personal Services Expenditure Detail
University of Alaska

Component: Anchorage Campus (753)

RDU: University of Alaska Anchorage (235)

Notes:

1. If a position is split, an asterisk (*) will appear in the Split/Count column. If the split position is also counted in the component, two asterisks (**) will appear in the column.
2. "Pool" PCN refers to UA temporary positions, such as adjunct faculty; student employees; and other non-permanent staff. Multiple incumbents may share the same labor pool position number and pooled budget.

PCN	Job Class Title	Location	Time Status	Split/ Count	Employee Class	Benefit Rate	Annual	Annual	Total	UGF
							Budgeted Salary	Benefits	Costs	Estimate
306388	Student Svcs Professional 4	Anchorage	FT		APT - Exempt Employees	41.2%	65,975	27,182	93,157	47,821
306389	Student Svcs Technician 3	Anchorage	FT		PERS - Classified	51.8%	47,980	24,854	72,834	37,388
306391	Fiscal Technician 3	Anchorage	FT		PERS - Classified	51.8%	47,083	24,389	71,472	36,689
306392	Admin Specialist 3	Anchorage	FT		APT - Exempt Employees	41.2%	64,693	26,654	91,347	0
306393	Mental Health Provider 2	Anchorage	FT		APT - Exempt Employees	41.2%	53,110	21,881	74,991	0
306394	Student Svcs Manager 3	Anchorage	FT		APT - Exempt Employees	41.2%	104,295	42,970	147,265	75,596
306395	Assistant Professor	Anchorage	FT		United Academics BU	30.8%	97,359	29,987	127,346	65,371
306396	Communications Specialist 2	Anchorage	FT		PERS - Classified	51.8%	5,683	2,944	8,627	4,428
306397	Administrative Professional 1	Anchorage	FT		APT - Exempt Employees	41.2%	86,322	35,565	121,887	62,569
306398	Student Svcs Professional 2	Anchorage	FT		PERS - Classified	51.8%	51,464	26,658	78,122	40,103
306399	Student Svcs Professional 4	Anchorage	FT		APT - Exempt Employees	41.2%	68,625	28,274	96,899	49,742
306400	Student Svcs Professional 2	Anchorage	FT		PERS - Classified	51.8%	52,490	27,190	79,680	40,903
306401	Admin Generalist 4	Anchorage	FT		PERS - Classified	51.8%	62,791	32,526	95,317	48,930
306402	IS Professional 3A	Anchorage	FT		APT - Exempt Employees	41.2%	82,133	33,839	115,972	59,533
306403	Student Svcs Technician 3	Anchorage	FT		PERS - Classified	51.8%	47,980	24,854	72,834	37,388
306404	Student Svcs Professional 3	Anchorage	FT		APT - Exempt Employees	41.2%	73,605	30,325	103,930	53,351
306405	Student Svcs Manager 1	Anchorage	FT		APT - Exempt Employees	41.2%	65,975	27,182	93,157	47,821
306406	Student Svcs Professional 4	Anchorage	FT		APT - Exempt Employees	41.2%	72,857	30,017	102,874	52,809
306407	Admin Generalist 4	Anchorage	FT		PERS - Classified	51.8%	48,963	25,363	74,326	38,154
306408	Student Svcs Professional 2	Anchorage	FT		PERS - Classified	51.8%	52,490	27,190	79,680	40,903
306409	Student Svcs Professional 4	Anchorage	FT		APT - Exempt Employees	41.2%	70,720	29,137	99,857	51,260
306410	Student Svcs Professional 4	Anchorage	FT		APT - Exempt Employees	41.2%	88,074	36,286	124,360	63,839
306411	Athletics Training 2	Anchorage	FT		APT - Exempt Employees	41.2%	65,951	27,172	93,123	47,803
306412	Administrative Management 3	Anchorage	FT		APT - Exempt Employees	41.2%	107,437	44,264	151,701	77,874
306413	Student Svcs Professional 3	Anchorage	FT		APT - Exempt Employees	41.2%	52,989	21,831	74,820	38,408
306414	Vice Chancellor (Admin)	Anchorage	FT		Sr. Administrator	25.1%	191,856	48,156	240,012	123,207
306415	Stu Svcs Profess 2 (Exempt)	Anchorage	FT		APT - Exempt Employees	41.2%	56,294	23,193	79,487	40,804
306417	Student Svcs Manager 2	Anchorage	FT		APT - Exempt Employees	41.2%	83,757	34,508	118,265	60,710
306420	Research Professional 3	Anchorage	FT		APT - Exempt Employees	41.2%	132,000	54,384	186,384	0
306421	Mental Health Provider 5	Anchorage	FT		APT - Exempt Employees	41.2%	52,490	21,626	74,116	0
306422	Admin Specialist 1	Anchorage	FT		PERS - Classified	51.8%	47,531	24,621	72,152	0
306423	Administrative Professional 2	Anchorage	FT		APT - Exempt Employees	41.2%	86,400	35,597	121,997	62,625

Personal Services Expenditure Detail
University of Alaska

Component: Anchorage Campus (753)

RDU: University of Alaska Anchorage (235)

Notes:

1. If a position is split, an asterisk (*) will appear in the Split/Count column. If the split position is also counted in the component, two asterisks (**) will appear in the column.
2. "Pool" PCN refers to UA temporary positions, such as adjunct faculty; student employees; and other non-permanent staff. Multiple incumbents may share the same labor pool position number and pooled budget.

PCN	Job Class Title	Location	Time Status	Split/ Count	Employee Class	Benefit Rate	Annual	Annual	Total	UGF
							Budgeted Salary	Benefits	Costs	Estimate
306424	Administrative Management 5	Anchorage	FT		APT - Exempt Employees	41.2%	128,553	52,964	181,517	93,179
306425	Student Svcs Professional 2	Anchorage	FT		PERS - Classified	51.8%	57,405	29,736	87,141	44,733
306427	Student Svcs Professional 4	Anchorage	FT		APT - Exempt Employees	41.2%	67,963	28,001	95,964	49,262
306428	Fiscal Professional 1	Anchorage	FT		PERS - Classified	51.8%	54,200	28,076	82,276	42,235
306429	Mental Health Provider 2	Anchorage	FT		APT - Exempt Employees	41.2%	47,831	19,706	67,537	0
306575	Student Svcs Professional 3	Anchorage	FT		APT - Exempt Employees	41.2%	60,355	24,866	85,221	43,747
306600	Student Svcs Professional 3	Anchorage	FT		APT - Exempt Employees	41.2%	56,225	23,165	79,390	0
306640	Student Svcs Professional 1	Anchorage	FT		PERS - Classified	51.8%	52,490	27,190	79,680	40,903
306645	Stu Svcs Profess 2 (Exempt)	Anchorage	FT		APT - Exempt Employees	41.2%	52,490	21,626	74,116	38,046
306650	Fiscal Technician 4	Anchorage	FT		PERS - Classified	51.8%	75,900	39,316	115,216	59,145
306665	Safety Svcs-Emerg Dispatcher 1	Anchorage	FT		PERS - Classified	51.8%	47,083	24,389	71,472	36,689
306670	Admin Generalist 4	Anchorage	FT		PERS - Classified	51.8%	49,419	25,599	75,018	38,510
306685	Fiscal Professional 3	Anchorage	FT		APT - Exempt Employees	41.2%	70,720	29,137	99,857	51,260
306690	Student Svcs Professional 3	Anchorage	FT		APT - Exempt Employees	41.2%	57,405	23,651	81,056	41,609
306700	Admin Specialist 3	Anchorage	FT		APT - Exempt Employees	41.2%	58,581	24,135	82,716	42,461
306715	Athletics Coach 2	Anchorage	FT		APT - Exempt Employees	41.2%	60,912	25,096	86,008	44,151
306720	Safety Svcs-Police 2	Anchorage	FT		PERS - Classified	51.8%	78,026	40,417	118,443	60,801
306725	Administrative Management 5	Anchorage	FT		APT - Exempt Employees	41.2%	141,996	58,502	200,498	102,923
306745	Communications Specialist 3	Anchorage	FT		PERS - Classified	51.8%	53,003	27,456	80,459	41,302
306750	Student Svcs Professional 3	Anchorage	FT		APT - Exempt Employees	41.2%	56,828	23,413	80,241	41,191
306770	Student Svcs Manager 2	Anchorage	FT		APT - Exempt Employees	41.2%	66,638	27,455	94,093	48,301
306775	Student Svcs Professional 2	Anchorage	FT		PERS - Classified	51.8%	24,011	12,438	36,449	18,710
306800	Student Svcs Technician 3	Anchorage	FT		PERS - Classified	51.8%	54,584	28,275	82,859	42,534
306825	Student Svcs Manager 1	Anchorage	FT		APT - Exempt Employees	41.2%	64,031	26,381	90,412	46,412
306850	IS Consultant 3A	Anchorage	FT		APT - Exempt Employees	41.2%	74,310	30,616	104,926	53,862
306885	Student Svcs Professional 3	Anchorage	FT		APT - Exempt Employees	41.2%	60,355	24,866	85,221	43,747
306886	Student Svcs Professional 3	Anchorage	FT		APT - Exempt Employees	41.2%	57,982	23,889	81,871	42,027
306887	Student Svcs Professional 4	Anchorage	FT		APT - Exempt Employees	41.2%	67,963	28,001	95,964	36,946
306888	Stu Svcs Profess 2 (Exempt)	Anchorage	FT		APT - Exempt Employees	41.2%	52,490	21,626	74,116	38,046
306953	Administrative Management 5	Anchorage	FT		APT - Exempt Employees	41.2%	195,255	80,445	275,700	0
306955	IS Consultant 2A	Anchorage	PT		PERS - Classified	51.8%	68,625	35,548	104,173	53,476
306959	Senior Administrator Director	Anchorage	FT		Sr. Administrator	25.1%	147,360	36,987	184,347	94,632

Personal Services Expenditure Detail
University of Alaska

Component: Anchorage Campus (753)

RDU: University of Alaska Anchorage (235)

Notes:

1. If a position is split, an asterisk (*) will appear in the Split/Count column. If the split position is also counted in the component, two asterisks (**) will appear in the column.
2. "Pool" PCN refers to UA temporary positions, such as adjunct faculty; student employees; and other non-permanent staff. Multiple incumbents may share the same labor pool position number and pooled budget.

PCN	Job Class Title	Location	Time Status	Split/ Count	Employee Class	Benefit Rate	Annual	Annual	Total	UGF
							Budgeted Salary	Benefits	Costs	Estimate
306964	Human Resources Technician 4	Anchorage	FT		PERS - Classified	51.8%	55,717	28,861	84,578	43,417
306967	Stu Svcs Profess 2 (Exempt)	Anchorage	FT		APT - Exempt Employees	41.2%	44,414	18,299	62,713	32,193
306970	Student Svcs Professional 4	Anchorage	FT		APT - Exempt Employees	41.2%	70,720	29,137	99,857	51,260
306972	Student Svcs Manager 3	Anchorage	FT		APT - Exempt Employees	41.2%	110,728	45,620	156,348	80,259
306973	Student Services Technician 4	Anchorage	FT		PERS - Classified	51.8%	54,114	28,031	82,145	42,168
306977	Student Svcs Technician 3	Anchorage	FT		PERS - Classified	51.8%	47,980	24,854	72,834	37,388
306979	Stu Svcs Profess 2 (Exempt)	Anchorage	FT		APT - Exempt Employees	41.2%	53,537	22,057	75,594	38,805
306981	Student Svcs Technician 3	Anchorage	FT		PERS - Classified	51.8%	48,963	25,363	74,326	38,154
306986	Admin Specialist 3	Anchorage	FT		APT - Exempt Employees	41.2%	81,299	33,495	114,794	58,928
306987	Research Professional 1	Anchorage	FT		PERS - Classified	51.8%	63,389	32,836	96,225	49,396
306989	Admin Specialist 2	Anchorage	FT		PERS - Classified	51.8%	50,331	26,071	76,402	39,220
306990	Student Svcs Manager 3	Anchorage	FT		APT - Exempt Employees	41.2%	115,195	47,460	162,655	83,497
306991	Student Svcs Manager 2	Anchorage	FT		APT - Exempt Employees	41.2%	66,638	27,455	94,093	48,301
306992	Admin Specialist 1	Anchorage	FT		PERS - Classified	51.8%	47,083	24,389	71,472	36,689
306993	Stu Svcs Profess 2 (Exempt)	Anchorage	FT		APT - Exempt Employees	41.2%	52,490	21,626	74,116	38,046
306994	Student Svcs Professional 1	Anchorage	FT		PERS - Classified	51.8%	51,977	26,924	78,901	40,503
306996	Communications Manager 1	Anchorage	FT		APT - Exempt Employees	41.2%	67,300	27,728	95,028	48,781
307000	Chancellor	Anchorage	FT		Officer	25.1%	306,966	77,048	384,014	197,129
307015	Administrative Management 3	Anchorage	FT		APT - Exempt Employees	41.2%	88,950	36,647	125,597	64,474
307025	Senior Administrator Director	Anchorage	FT		Sr. Administrator	25.1%	135,242	33,946	169,188	86,850
307105	Environmental Health/Safety 3	Anchorage	FT		APT - Exempt Employees	41.2%	82,923	34,164	117,087	60,105
307110	Admin Specialist 3	Anchorage	FT		APT - Exempt Employees	41.2%	65,291	26,900	92,191	47,325
307115	Fiscal Professional 1	Anchorage	FT		PERS - Classified	51.8%	61,551	31,883	93,434	47,963
307135	Fiscal Professional 3	Anchorage	FT		APT - Exempt Employees	41.2%	62,791	25,870	88,661	45,513
307140	Fiscal Manager 4	Anchorage	FT		APT - Exempt Employees	41.2%	105,321	43,392	148,713	76,340
307145	Fiscal Technician 3	Anchorage	FT		PERS - Classified	51.8%	52,490	27,190	79,680	40,903
307220	Campus Services Printing 1	Anchorage	FT		PERS - Classified	51.8%	11,720	6,071	17,791	9,133
307230	Campus Services Retail 2	Anchorage	FT		PERS - Classified	51.8%	76,555	39,655	116,210	59,655
307240	Campus Services Generalist 3	Anchorage	FT		PERS - Classified	51.8%	39,346	20,381	59,727	30,660
307250	Safety Svcs-Emerg Dispatcher 3	Anchorage	FT		PERS - Classified	51.8%	64,693	33,511	98,204	50,412
307270	Administrative Management 1	Anchorage	FT		APT - Exempt Employees	41.2%	70,720	29,137	99,857	51,260
307349	IS Professional 3A	Anchorage	FT		APT - Exempt Employees	41.2%	81,299	33,495	114,794	58,928

Personal Services Expenditure Detail
University of Alaska

Component: Anchorage Campus (753)

RDU: University of Alaska Anchorage (235)

Notes:

1. If a position is split, an asterisk (*) will appear in the Split/Count column. If the split position is also counted in the component, two asterisks (**) will appear in the column.
2. "Pool" PCN refers to UA temporary positions, such as adjunct faculty; student employees; and other non-permanent staff. Multiple incumbents may share the same labor pool position number and pooled budget.

PCN	Job Class Title	Location	Time Status	Split/ Count	Employee Class	Benefit Rate	Annual	Annual	Total	UGF
							Budgeted Salary	Benefits	Costs	Estimate
307352	Student Svcs Professional 3	Anchorage	FT		APT - Exempt Employees	41.2%	60,910	25,095	86,005	0
307353	Fiscal Professional 3	Anchorage	FT		APT - Exempt Employees	41.2%	81,299	33,495	114,794	58,928
307354	Fiscal Technician 3	Anchorage	FT		PERS - Classified	51.8%	44,796	23,204	68,000	34,907
307355	Assistant Professor	Anchorage	FT		United Academics BU	30.8%	78,852	24,286	103,138	52,945
307358	Athletics Training 2	Anchorage	FT		APT - Exempt Employees	41.2%	54,583	22,488	77,071	39,563
307359	Administrative Professional 1	Anchorage	FT		APT - Exempt Employees	41.2%	82,133	33,839	115,972	59,533
307366	Communications Specialist 4	Anchorage	FT		APT - Exempt Employees	41.2%	60,355	24,866	85,221	43,747
307370	Development 3	Anchorage	FT		APT - Exempt Employees	41.2%	64,031	26,381	90,412	46,412
307372	Student Svcs Manager 1	Anchorage	FT		APT - Exempt Employees	41.2%	64,031	26,381	90,412	46,412
307379	Administrative Professional 2	Anchorage	FT		APT - Exempt Employees	41.2%	82,923	34,164	117,087	60,105
307380	Associate Vice Chancellor	Anchorage	FT		Sr. Administrator	25.1%	144,325	36,226	180,551	92,683
307381	Fiscal Manager 3	Anchorage	FT		APT - Exempt Employees	41.2%	92,541	38,127	130,668	67,077
307391	Fiscal Manager 3	Anchorage	FT		APT - Exempt Employees	41.2%	98,247	40,478	138,725	71,213
307392	Fiscal Technician 3	Anchorage	FT		PERS - Classified	51.8%	47,083	24,389	71,472	36,689
307393	Administrative Professional 4	Anchorage	FT		APT - Exempt Employees	41.2%	122,291	50,384	172,675	88,640
307396	Administrative Management 5	Anchorage	FT		APT - Exempt Employees	41.2%	152,233	62,720	214,953	110,343
307399	Administrative Management 4	Anchorage	FT		APT - Exempt Employees	41.2%	144,817	59,665	204,482	104,968
307401	Admin Generalist 3	Anchorage	FT		PERS - Classified	51.8%	65,975	34,175	100,150	51,411
307406	Fiscal Technician 4	Anchorage	FT		PERS - Classified	51.8%	51,977	26,924	78,901	40,503
307407	Fiscal Technician 2	Anchorage	FT		PERS - Classified	51.8%	53,537	27,732	81,269	41,718
307408	Fiscal Technician 2	Anchorage	FT		PERS - Classified	51.8%	47,083	24,389	71,472	36,689
307409	IS Ops Technician 3	Anchorage	FT		PERS - Classified	51.8%	56,900	29,474	86,374	44,339
307410	Administrative Management 4	Anchorage	FT		APT - Exempt Employees	41.2%	131,649	54,239	185,888	74,429
307411	Communications Specialist 3	Anchorage	FT		PERS - Classified	51.8%	57,619	29,847	87,466	44,899
307412	Fiscal Professional 2	Anchorage	FT		APT - Exempt Employees	41.2%	56,294	23,193	79,487	40,804
307415	Administrative Management 3	Anchorage	FT		APT - Exempt Employees	41.2%	106,400	43,837	150,237	0
307417	Executive Director	Anchorage	FT		Sr. Administrator	25.1%	112,266	28,179	140,445	72,095
307419	Fiscal Professional 1	Anchorage	FT		PERS - Classified	51.8%	54,114	28,031	82,145	42,168
307420	Fiscal Professional 2	Anchorage	FT		APT - Exempt Employees	41.2%	60,910	25,095	86,005	44,149
307421	Campus Services Generalist 3	Anchorage	FT		PERS - Classified	51.8%	77,303	40,043	117,346	60,238
307424	Safety Svcs-Emerg Dispatcher 1	Anchorage	FT		PERS - Classified	51.8%	47,083	24,389	71,472	36,689
307426	Fiscal Manager 2	Anchorage	FT		APT - Exempt Employees	41.2%	88,950	36,647	125,597	64,474

Personal Services Expenditure Detail
University of Alaska

Component: Anchorage Campus (753)

RDU: University of Alaska Anchorage (235)

Notes:

1. If a position is split, an asterisk (*) will appear in the Split/Count column. If the split position is also counted in the component, two asterisks (**) will appear in the column.
2. "Pool" PCN refers to UA temporary positions, such as adjunct faculty; student employees; and other non-permanent staff. Multiple incumbents may share the same labor pool position number and pooled budget.

PCN	Job Class Title	Location	Time Status	Split/ Count	Employee Class	Benefit Rate	Annual	Annual	Total	UGF
							Budgeted			
307427	Fiscal Technician 4	Anchorage	FT		PERS - Classified	51.8%	51,464	26,658	78,122	40,103
307429	Safety Svcs-Emerg Dispatcher 1	Anchorage	FT		PERS - Classified	51.8%	47,083	24,389	71,472	36,689
307430	Administrative Professional 1	Anchorage	FT		APT - Exempt Employees	41.2%	74,400	30,653	105,053	0
307431	IS Professional 3A	Anchorage	FT		APT - Exempt Employees	41.2%	72,857	30,017	102,874	52,809
307432	Student Svcs Professional 3	Anchorage	FT		APT - Exempt Employees	41.2%	56,294	23,193	79,487	40,804
307439	Admin Specialist 2	Anchorage	FT		PERS - Classified	51.8%	64,693	33,511	98,204	50,412
307441	Vice Chancellor (Admin)	Anchorage	FT		Sr. Administrator	25.1%	190,788	47,888	238,676	122,521
307443	Admin Specialist 4	Anchorage	FT		APT - Exempt Employees	41.2%	71,447	29,436	100,883	51,787
307515	Administrative Professional 4	Anchorage	FT		APT - Exempt Employees	41.2%	96,300	39,676	135,976	69,801
307525	Research Professional 2	Anchorage	FT		APT - Exempt Employees	41.2%	59,756	24,619	84,375	43,313
307545	Fiscal Manager 3	Anchorage	FT		APT - Exempt Employees	41.2%	87,155	35,908	123,063	63,173
307550	Administrative Specialist 3	Anchorage	FT		APT - Exempt Employees	41.2%	78,905	32,509	111,414	57,193
307560	Safety Svcs-Parking 2	Anchorage	FT		PERS - Classified	51.8%	35,161	18,213	53,374	0
307622	Safety Svcs-Police 2	Anchorage	FT		PERS - Classified	51.8%	76,500	39,627	116,127	59,612
307626	Research Technician 4	Anchorage	FT		PERS - Classified	51.8%	52,490	27,190	79,680	40,903
307628	Fiscal Technician 4	Anchorage	FT		PERS - Classified	51.8%	53,537	27,732	81,269	41,718
307632	Safety Svcs-Police 2	Anchorage	FT		PERS - Classified	51.8%	78,026	40,417	118,443	60,801
307634	Safety Svcs-Police 2	Anchorage	FT		PERS - Classified	51.8%	78,026	40,417	118,443	60,801
307636	Safety Svcs-Police 2	Anchorage	FT		PERS - Classified	51.8%	78,026	40,417	118,443	60,801
307640	Admin Specialist 3	Anchorage	FT		APT - Exempt Employees	41.2%	73,605	30,325	103,930	53,351
307642	Campus Services Generalist 4	Anchorage	FT		PERS - Classified	51.8%	37,828	19,595	57,423	29,477
307646	Fiscal Technician 3	Anchorage	FT		PERS - Classified	51.8%	63,389	32,836	96,225	49,396
307650	Environmental Health/Safety 3	Anchorage	FT		APT - Exempt Employees	41.2%	82,132	33,838	115,970	59,532
307652	Communications Specialist 3	Anchorage	FT		PERS - Classified	51.8%	57,405	29,736	87,141	44,733
307656	Fiscal Technician 4	Anchorage	FT		PERS - Classified	51.8%	53,003	27,456	80,459	41,302
307658	Fiscal Professional 3	Anchorage	FT		APT - Exempt Employees	41.2%	168,804	69,547	238,351	71,605
307692	Campus Services Generalist 3	Anchorage	FT		PERS - Classified	51.8%	4,316	2,236	6,552	3,363
307698	Communications Specialist 5	Anchorage	FT		APT - Exempt Employees	41.2%	74,310	30,616	104,926	53,862
307749	IS Professional 1A	Anchorage	FT		PERS - Classified	51.8%	74,586	38,636	113,222	39,854
307751	Athletics Training 2	Anchorage	FT		APT - Exempt Employees	41.2%	47,633	19,625	67,258	34,526
307753	Library Technician 2	Anchorage	FT		PERS - Classified	51.8%	34,879	18,067	52,946	27,179
307755	Environmental Health/Safety 3	Anchorage	FT		APT - Exempt Employees	41.2%	87,155	35,908	123,063	63,173

Personal Services Expenditure Detail
University of Alaska

Component: Anchorage Campus (753)

RDU: University of Alaska Anchorage (235)

Notes:

1. If a position is split, an asterisk (*) will appear in the Split/Count column. If the split position is also counted in the component, two asterisks (**) will appear in the column.
2. "Pool" PCN refers to UA temporary positions, such as adjunct faculty; student employees; and other non-permanent staff. Multiple incumbents may share the same labor pool position number and pooled budget.

PCN	Job Class Title	Location	Time Status	Split/ Count	Employee Class	Benefit Rate	Annual Budgeted Salary	Annual Benefits	Total Costs	UGF Estimate
307756	Safety Svcs-Parking 2	Anchorage	FT		PERS - Classified	51.8%	21,580	11,178	32,758	0
307757	Admin Specialist 3	Anchorage	FT		APT - Exempt Employees	41.2%	61,551	25,359	86,910	44,614
307758	Human Resources Technician 3	Anchorage	FT		PERS - Classified	51.8%	52,490	27,190	79,680	40,903
307758	Training & Development 4	Anchorage	FT		APT - Exempt Employees	41.2%	65,300	26,904	92,204	47,331
307760	Administrative Professional 4	Anchorage	FT		APT - Exempt Employees	41.2%	99,230	40,883	140,113	71,925
307761	Administrative Professional 1	Anchorage	FT		APT - Exempt Employees	41.2%	82,200	33,866	116,066	59,581
307762	Fiscal Technician 3	Anchorage	FT		PERS - Classified	51.8%	47,083	24,389	71,472	36,689
307763	Fiscal Technician 3	Anchorage	FT		PERS - Classified	51.8%	47,083	24,389	71,472	36,689
307764	Fiscal Technician 4	Anchorage	FT		PERS - Classified	51.8%	53,003	27,456	80,459	41,302
307765	Fiscal Technician 4	Anchorage	FT		PERS - Classified	51.8%	51,977	26,924	78,901	40,503
307768	Admin Specialist 1	Anchorage	FT		PERS - Classified	51.8%	50,438	26,127	76,565	39,304
307769	Safety Svcs-Police 2	Anchorage	FT		PERS - Classified	51.8%	74,310	38,493	112,803	57,906
307769	Security Officer II	Anchorage	FT		PERS - Classified	51.8%	51,500	26,677	78,177	40,131
307770	Fiscal Manager 3	Anchorage	FT		APT - Exempt Employees	41.2%	106,386	43,831	150,217	77,112
307771	Senior Administrator Director	Anchorage	FT		Sr. Administrator	25.1%	161,594	40,560	202,154	103,773
307772	IS Professional 5A	Anchorage	FT		APT - Exempt Employees	41.2%	102,222	42,115	144,337	74,094
307774	Safety Svcs-Emerg Dispatcher 1	Anchorage	FT		PERS - Classified	51.8%	47,083	24,389	71,472	36,689
307775	Fiscal Manager 3	Anchorage	FT		APT - Exempt Employees	41.2%	181,406	74,739	256,145	131,489
307778	IS Net Technician 7	Anchorage	FT		PERS - Classified	51.8%	67,300	34,861	102,161	52,443
307780	IS Consultant 2A	Anchorage	FT		PERS - Classified	51.8%	54,584	28,275	82,859	42,534
307781	Student Svcs Technician 3	Anchorage	FT		PERS - Classified	51.8%	75,849	39,290	115,139	59,105
307782	IS Manager 3	Anchorage	FT		APT - Exempt Employees	41.2%	114,040	46,984	161,024	82,660
307783	IS Consultant 5A	Anchorage	FT		APT - Exempt Employees	41.2%	80,530	33,178	113,708	58,371
307784	Administrative Management 4	Anchorage	FT		APT - Exempt Employees	41.2%	99,230	40,883	140,113	71,925
307785	Research Professional 2	Anchorage	FT		APT - Exempt Employees	41.2%	63,389	26,116	89,505	45,946
307787	Administrative Management 5	Anchorage	FT		APT - Exempt Employees	41.2%	137,764	56,759	194,523	99,856
307800	Fiscal Professional 2	Anchorage	FT		APT - Exempt Employees	41.2%	56,294	23,193	79,487	40,804
307802	Fiscal Professional 2	Anchorage	FT		APT - Exempt Employees	41.2%	65,975	27,182	93,157	47,821
307804	Communications Specialist 3	Anchorage	FT		PERS - Classified	51.8%	60,355	31,264	91,619	47,031
307806	Development 2	Anchorage	FT		PERS - Classified	51.8%	56,294	29,160	85,454	0
307808	Administrative Management 5	Anchorage	FT		APT - Exempt Employees	41.2%	112,091	46,181	158,272	81,247
307810	Training & Development 1	Anchorage	FT		PERS - Classified	51.8%	27,800	14,400	42,200	0

Personal Services Expenditure Detail
University of Alaska

Component: Anchorage Campus (753)

RDU: University of Alaska Anchorage (235)

Notes:

1. If a position is split, an asterisk (*) will appear in the Split/Count column. If the split position is also counted in the component, two asterisks (**) will appear in the column.
2. "Pool" PCN refers to UA temporary positions, such as adjunct faculty; student employees; and other non-permanent staff. Multiple incumbents may share the same labor pool position number and pooled budget.

PCN	Job Class Title	Location	Time Status	Split/ Count	Employee Class	Benefit Rate	Annual	Annual	Total	UGF
							Budgeted Salary	Benefits	Costs	Estimate
307812	Communications Manager 3	Anchorage	FT		APT - Exempt Employees	41.2%	97,264	40,073	137,337	70,500
307814	Communications Specialist 4	Anchorage	FT		APT - Exempt Employees	41.2%	68,625	28,274	96,899	49,742
307816	Research Professional 2	Anchorage	FT		APT - Exempt Employees	41.2%	63,389	26,116	89,505	45,946
307818	Administrative Professional 1	Anchorage	FT		APT - Exempt Employees	41.2%	78,083	32,170	110,253	56,597
307824	Safety Svcs-Police 2	Anchorage	FT		PERS - Classified	51.8%	78,026	40,417	118,443	60,801
307826	Fiscal Professional 1	Anchorage	FT		PERS - Classified	51.8%	55,183	28,585	83,768	43,001
307828	IS Consultant 5A	Anchorage	FT		APT - Exempt Employees	41.2%	91,643	37,757	129,400	66,426
307831	Development 4	Anchorage	FT		APT - Exempt Employees	41.2%	85,467	35,212	120,679	61,949
307832	Development 4	Anchorage	FT		APT - Exempt Employees	41.2%	96,281	39,668	135,949	69,787
307833	Training & Development 5	Anchorage	FT		APT - Exempt Employees	41.2%	82,133	33,839	115,972	59,533
307834	Communications Specialist 3	Anchorage	FT		PERS - Classified	51.8%	55,159	28,572	83,731	42,982
307835	IS Net Technician 7	Anchorage	FT		PERS - Classified	51.8%	64,693	33,511	98,204	50,412
307836	Development 4	Anchorage	FT		APT - Exempt Employees	41.2%	84,590	34,851	119,441	61,313
308005	Administrative Professional 2	Anchorage	FT		APT - Exempt Employees	41.2%	86,322	35,565	121,887	62,569
308015	Professor	Anchorage	FT		United Academics BU	30.8%	86,644	26,686	113,330	58,177
308020	Campus Services Printing 1	Anchorage	FT		PERS - Classified	51.8%	64,826	33,580	98,406	50,515
308025	Admin Specialist 2	Anchorage	FT		PERS - Classified	51.8%	55,717	28,861	84,578	43,417
308040	Fac Svcs-MO&U Supervisor 4	Anchorage	FT		APT - Exempt Employees	41.2%	90,724	37,378	128,102	65,760
308055	Crafts & Trades III (CT3)	Anchorage	FT		AHECTE- Labor Trades & Crafts	46.0%	71,602	32,937	104,539	53,664
308060	Training & Development 1	Anchorage	FT		PERS - Classified	51.8%	32,600	16,887	49,487	0
308070	Crafts & Trades III (CT3)	Anchorage	FT		AHECTE- Labor Trades & Crafts	46.0%	67,438	31,021	98,459	50,543
308075	Fac Svcs-MO&U Supervisor 5	Anchorage	FT		APT - Exempt Employees	41.2%	94,422	38,902	133,324	68,440
308080	Crafts & Trades II (CT2)	Anchorage	FT		AHECTE- Labor Trades & Crafts	46.0%	64,826	29,820	94,646	48,585
308082	Crafts & Trades I (CT1)	Anchorage	FT		AHECTE- Labor Trades & Crafts	46.0%	51,166	23,536	74,702	38,347
308085	Crafts & Trades III (CT3)	Anchorage	FT		AHECTE- Labor Trades & Crafts	46.0%	81,702	37,583	119,285	61,233
308090	Crafts & Trades I (CT1)	Anchorage	FT		AHECTE- Labor Trades & Crafts	46.0%	52,396	24,102	76,498	39,269
308092	Crafts & Trades III (CT3)	Anchorage	FT		AHECTE- Labor Trades & Crafts	46.0%	80,105	36,848	116,953	60,036
308100	Crafts & Trades III (CT3)	Anchorage	FT		AHECTE- Labor Trades & Crafts	46.0%	81,702	37,583	119,285	61,233
308105	Crafts & Trades III (CT3)	Anchorage	FT		AHECTE- Labor Trades & Crafts	46.0%	81,702	37,583	119,285	61,233
308110	Fac Engineering 2	Anchorage	FT		PERS - Classified	51.8%	67,300	34,861	102,161	52,443
308135	Crafts & Trades I (CT1)	Anchorage	FT		AHECTE- Labor Trades & Crafts	46.0%	58,784	27,041	85,825	44,057
308150	Crafts & Trades III (CT3)	Anchorage	FT		AHECTE- Labor Trades & Crafts	46.0%	70,178	32,282	102,460	52,596

Personal Services Expenditure Detail
University of Alaska

Component: Anchorage Campus (753)

RDU: University of Alaska Anchorage (235)

Notes:

1. If a position is split, an asterisk (*) will appear in the Split/Count column. If the split position is also counted in the component, two asterisks (**) will appear in the column.
2. "Pool" PCN refers to UA temporary positions, such as adjunct faculty; student employees; and other non-permanent staff. Multiple incumbents may share the same labor pool position number and pooled budget.

PCN	Job Class Title	Location	Time Status	Split/ Count	Employee Class	Benefit Rate	Annual	Annual	Total	UGF
							Budgeted Salary	Benefits	Costs	Estimate
308165	Crafts & Trades III (CT3)	Anchorage	FT		AHECTE- Labor Trades & Crafts	46.0%	81,702	37,583	119,285	61,233
308180	Fac Svcs-MO&U Supervisor 5	Anchorage	FT		APT - Exempt Employees	41.2%	96,280	39,667	135,947	69,787
308185	Maint Service Worker IV (MSW4)	Anchorage	FT		AHECTE- Labor Trades & Crafts	46.0%	47,325	21,770	69,095	35,469
308190	Maint Service Worker IV (MSW4)	Anchorage	FT		AHECTE- Labor Trades & Crafts	46.0%	48,253	22,196	70,449	36,164
308195	Crafts & Trades I (CT1)	Anchorage	FT		AHECTE- Labor Trades & Crafts	46.0%	52,396	24,102	76,498	39,269
308200	Maint Service Worker IV (MSW4)	Anchorage	FT		AHECTE- Labor Trades & Crafts	46.0%	50,195	23,090	73,285	37,620
308205	Fac Engineering 5	Anchorage	FT		APT - Exempt Employees	41.2%	99,230	40,883	140,113	71,925
308210	Admin Specialist 2	Anchorage	FT		PERS - Classified	51.8%	55,717	28,861	84,578	43,417
308215	Crafts & Trades I (CT1)	Anchorage	FT		AHECTE- Labor Trades & Crafts	46.0%	52,396	24,102	76,498	39,269
308220	Crafts & Trades II (CT2)	Anchorage	FT		AHECTE- Labor Trades & Crafts	46.0%	62,280	28,649	90,929	46,677
308235	Admin Specialist 2	Anchorage	FT		PERS - Classified	51.8%	57,405	29,736	87,141	44,733
308240	Maint Service Worker IV (MSW4)	Anchorage	FT		AHECTE- Labor Trades & Crafts	46.0%	54,597	25,115	79,712	40,919
308245	Maint Service Worker IV (MSW4)	Anchorage	FT		AHECTE- Labor Trades & Crafts	46.0%	53,238	24,489	77,727	39,900
308250	Fac Svcs-MO&U Supervisor 4	Anchorage	FT		APT - Exempt Employees	41.2%	85,467	35,212	120,679	61,949
308260	Crafts & Trades I (CT1)	Anchorage	FT		AHECTE- Labor Trades & Crafts	46.0%	58,784	27,041	85,825	44,057
308265	Crafts & Trades I (CT1)	Anchorage	FT		AHECTE- Labor Trades & Crafts	46.0%	57,100	26,266	83,366	0
308270	Fac Svcs-MO&U Supervisor 4	Anchorage	FT		APT - Exempt Employees	41.2%	85,467	35,212	120,679	61,949
308285	Maint Service Worker IV (MSW4)	Anchorage	FT		AHECTE- Labor Trades & Crafts	46.0%	48,253	22,196	70,449	36,164
308290	Research Professional 2	Anchorage	FT		APT - Exempt Employees	41.2%	63,411	26,125	89,536	45,962
308300	Crafts & Trades III (CT3)	Anchorage	FT		AHECTE- Labor Trades & Crafts	46.0%	70,178	32,282	102,460	52,596
308305	Crafts & Trades I (CT1)	Anchorage	FT		AHECTE- Labor Trades & Crafts	46.0%	55,396	25,482	80,878	41,518
308310	Professor	Anchorage	FT		United Academics BU	30.8%	112,201	34,558	146,759	60,270
308315	Crafts & Trades III (CT3)	Anchorage	FT		AHECTE- Labor Trades & Crafts	46.0%	80,105	36,848	116,953	60,036
308320	IS Professional 3A	Anchorage	FT		APT - Exempt Employees	41.2%	82,133	33,839	115,972	59,533
308325	Maint Service Worker IV (MSW4)	Anchorage	FT		AHECTE- Labor Trades & Crafts	46.0%	50,195	23,090	73,285	37,620
308330	Assistant Professor	Anchorage	FT		United Academics BU	30.8%	126,994	39,114	166,108	85,269
308360	Student Svcs Professional 2	Anchorage	FT		PERS - Classified	51.8%	54,584	28,275	82,859	42,534
308370	Student Svcs Manager 3	Anchorage	FT		APT - Exempt Employees	41.2%	96,281	39,668	135,949	69,787
308380	Crafts & Trades III (CT3)	Anchorage	FT		AHECTE- Labor Trades & Crafts	46.0%	80,105	36,848	116,953	60,036
308415	Maint Service Worker IV (MSW4)	Anchorage	FT		AHECTE- Labor Trades & Crafts	46.0%	45,100	20,746	65,846	0
308430	Crafts & Trades III (CT3)	Anchorage	FT		AHECTE- Labor Trades & Crafts	46.0%	67,438	31,021	98,459	50,543
308450	Admin Specialist 2	Anchorage	FT		PERS - Classified	51.8%	57,405	29,736	87,141	44,733

Personal Services Expenditure Detail
University of Alaska

Component: Anchorage Campus (753)

RDU: University of Alaska Anchorage (235)

Notes:

1. If a position is split, an asterisk (*) will appear in the Split/Count column. If the split position is also counted in the component, two asterisks (**) will appear in the column.
2. "Pool" PCN refers to UA temporary positions, such as adjunct faculty; student employees; and other non-permanent staff. Multiple incumbents may share the same labor pool position number and pooled budget.

PCN	Job Class Title	Location	Time Status	Split/ Count	Employee Class	Benefit Rate	Annual	Annual	Total	UGF
							Budgeted			
308452	Administrative Management 5	Anchorage	FT		APT - Exempt Employees	41.2%	153,750	63,345	217,095	111,443
308453	Safety Svcs-Police 2	Anchorage	FT		PERS - Classified	51.8%	78,026	40,417	118,443	60,801
308455	Safety Svcs-Emerg Dispatcher 1	Anchorage	FT		PERS - Classified	51.8%	56,294	29,160	85,454	43,867
308456	Safety Svcs-Police 2	Anchorage	FT		PERS - Classified	51.8%	65,975	34,175	100,150	51,411
308502	Maint Service Worker IV (MSW4)	Anchorage	FT		AHECTE- Labor Trades & Crafts	46.0%	48,253	22,196	70,449	36,164
308503	Crafts & Trades III (CT3)	Anchorage	FT		AHECTE- Labor Trades & Crafts	46.0%	73,027	33,592	106,619	54,732
308504	Admin Specialist 4	Anchorage	FT		APT - Exempt Employees	41.2%	82,923	34,164	117,087	60,105
308505	Crafts & Trades III (CT3)	Anchorage	FT		AHECTE- Labor Trades & Crafts	46.0%	73,027	33,592	106,619	54,732
308506	Crafts & Trades II (CT2)	Anchorage	FT		AHECTE- Labor Trades & Crafts	46.0%	66,078	30,396	96,474	49,524
308507	Crafts & Trades II (CT2)	Anchorage	FT		AHECTE- Labor Trades & Crafts	46.0%	63,532	29,225	92,757	47,615
308508	Fac Svcs-MO&U Supervisor 4	Anchorage	FT		APT - Exempt Employees	41.2%	75,849	31,250	107,099	54,978
308513	Crafts & Trades III (CT3)	Anchorage	FT		AHECTE- Labor Trades & Crafts	46.0%	81,702	37,583	119,285	61,233
308514	Crafts & Trades III (CT3)	Anchorage	FT		AHECTE- Labor Trades & Crafts	46.0%	81,702	37,583	119,285	61,233
308515	Crafts & Trades II (CT2)	Anchorage	FT		AHECTE- Labor Trades & Crafts	46.0%	63,532	29,225	92,757	47,615
308517	Fac Svcs-MO&U Supervisor 4	Anchorage	FT		APT - Exempt Employees	41.2%	80,529	33,178	113,707	58,370
308519	Crafts & Trades III (CT3)	Anchorage	FT		AHECTE- Labor Trades & Crafts	46.0%	81,702	37,583	119,285	61,233
308520	Fac Engineering 5	Anchorage	FT		APT - Exempt Employees	41.2%	121,500	50,058	171,558	88,067
308522	Library Technician 3	Anchorage	FT		PERS - Classified	51.8%	46,591	24,134	70,725	36,306
308525	Administrative Management 2	Anchorage	FT		APT - Exempt Employees	41.2%	96,281	39,668	135,949	69,787
308528	Fac Engineering 5	Anchorage	FT		APT - Exempt Employees	41.2%	114,041	46,985	161,026	82,660
308529	Fac Engineering 5	Anchorage	FT		APT - Exempt Employees	41.2%	102,222	42,115	144,337	74,094
308530	Fac Engineering 4	Anchorage	FT		APT - Exempt Employees	41.2%	89,826	37,008	126,834	65,109
308531	Fac Svcs-MO&U Supervsr 3 (NE)	Anchorage	FT		PERS - Classified	51.8%	78,136	40,474	118,610	60,887
308532	Fac Engineering 7	Anchorage	FT		APT - Exempt Employees	41.2%	149,177	61,461	210,638	108,128
308533	Instructional Designer 2	Anchorage	FT		PERS - Classified	51.8%	61,808	32,017	93,825	48,164
308534	Crafts & Trades III (CT3)	Anchorage	FT		AHECTE- Labor Trades & Crafts	46.0%	70,178	32,282	102,460	52,596
308536	Professor	Anchorage	FT		United Academics BU	30.8%	94,469	29,096	123,565	63,431
308537	Crafts & Trades II (CT2)	Anchorage	FT		AHECTE- Labor Trades & Crafts	46.0%	66,078	30,396	96,474	49,524
308538	Crafts & Trades III (CT3)	Anchorage	FT		AHECTE- Labor Trades & Crafts	46.0%	81,702	37,583	119,285	61,233
308539	Crafts & Trades I (CT1)	Anchorage	FT		AHECTE- Labor Trades & Crafts	46.0%	55,396	25,482	80,878	41,518
308540	IS Professional 4A	Anchorage	FT		APT - Exempt Employees	41.2%	82,923	34,164	117,087	60,105
308542	Admin Specialist 3	Anchorage	FT		APT - Exempt Employees	41.2%	57,405	23,651	81,056	41,609

Personal Services Expenditure Detail
University of Alaska

Component: Anchorage Campus (753)

RDU: University of Alaska Anchorage (235)

Notes:

1. If a position is split, an asterisk (*) will appear in the Split/Count column. If the split position is also counted in the component, two asterisks (**) will appear in the column.
2. "Pool" PCN refers to UA temporary positions, such as adjunct faculty; student employees; and other non-permanent staff. Multiple incumbents may share the same labor pool position number and pooled budget.

PCN	Job Class Title	Location	Time Status	Split/ Count	Employee Class	Benefit Rate	Annual	Annual	Total	UGF
							Budgeted Salary	Benefits	Costs	Estimate
308543	Admin Specialist 2	Anchorage	FT		PERS - Classified	51.8%	55,717	28,861	84,578	43,417
308544	Fiscal Manager 1	Anchorage	FT		APT - Exempt Employees	41.2%	89,827	37,009	126,836	65,109
308545	FAC Svcs Drafting 3	Anchorage	FT		PERS - Classified	51.8%	65,291	33,821	99,112	50,878
308547	Admin Specialist 2	Anchorage	FT		PERS - Classified	51.8%	75,443	39,079	114,522	58,789
308548	Student Svcs Manager 2	Anchorage	FT		APT - Exempt Employees	41.2%	95,362	39,289	134,651	69,121
308549	IS Net Technician 7	Anchorage	FT		PERS - Classified	51.8%	66,638	34,518	101,156	51,927
308550	Professor	Anchorage	FT		United Academics BU	30.8%	127,109	39,150	166,259	85,347
308552	Safety Svcs-Parking 1	Anchorage	FT		PERS - Classified	51.8%	62,193	32,216	94,409	0
308554	Crafts & Trades III (CT3)	Anchorage	FT		AHECTE- Labor Trades & Crafts	46.0%	81,702	37,583	119,285	61,233
308556	Assistant Professor	Anchorage	FT		United Academics BU	30.8%	93,099	28,674	121,773	62,511
308557	Term Asst Professor	Anchorage	FT		United Academics BU	30.8%	72,693	22,389	95,082	48,809
308558	Fiscal Professional 3	Anchorage	FT		APT - Exempt Employees	41.2%	71,447	29,436	100,883	51,787
308559	Library Technician 4	Anchorage	FT		PERS - Classified	51.8%	44,796	23,204	68,000	34,907
308560	Assistant Professor	Anchorage	FT		United Academics BU	30.8%	93,099	28,674	121,773	62,511
308563	Student Svcs Professional 2	Anchorage	FT		PERS - Classified	51.8%	52,490	27,190	79,680	40,903
308564	Admin Generalist 2	Anchorage	FT		PERS - Classified	51.8%	45,651	23,647	69,298	35,573
308565	Research Professional 4	Anchorage	FT		APT - Exempt Employees	41.2%	108,548	44,722	153,270	78,679
308567	Professor	Anchorage	FT		United Academics BU	30.8%	136,305	41,982	178,287	91,521
308569	Training & Development 3	Anchorage	FT		PERS - Classified	51.8%	55,200	28,594	83,794	0
308570	Associate Professor	Anchorage	FT		United Academics BU	30.8%	79,445	24,469	103,914	53,343
308571	Associate Professor	Anchorage	FT		United Academics BU	30.8%	77,134	23,757	100,891	51,791
308573	Associate Professor	Anchorage	FT		United Academics BU	30.8%	62,127	19,135	81,262	41,715
308574	Professor	Anchorage	FT		United Academics BU	30.8%	91,927	28,314	120,241	61,724
309005	Administrative Management 3	Anchorage	FT		APT - Exempt Employees	41.2%	83,000	34,196	117,196	60,161
309015	Communications Specialist 5	Anchorage	FT		APT - Exempt Employees	41.2%	67,963	28,001	95,964	49,262
309045	Library Professional 4	Anchorage	FT		APT - Exempt Employees	41.2%	85,500	35,226	120,726	61,973
309050	Campus Services Retail 5	Anchorage	FT		APT - Exempt Employees	41.2%	60,425	24,895	85,320	0
309055	Admin Generalist 2	Anchorage	FT		PERS - Classified	51.8%	49,476	25,629	75,105	38,554
309125	Training & Development 1	Anchorage	FT		PERS - Classified	51.8%	27,800	14,400	42,200	0
309155	Student Svcs Manager 2	Anchorage	FT		APT - Exempt Employees	41.2%	74,400	30,653	105,053	0
309160	Training & Development 4	Anchorage	FT		APT - Exempt Employees	41.2%	72,900	30,035	102,935	0
309170	Crafts & Trades I (CT1)	Anchorage	FT		AHECTE- Labor Trades & Crafts	46.0%	47,083	21,658	68,741	0

Personal Services Expenditure Detail
University of Alaska

Component: Anchorage Campus (753)

RDU: University of Alaska Anchorage (235)

Notes:

1. If a position is split, an asterisk (*) will appear in the Split/Count column. If the split position is also counted in the component, two asterisks (**) will appear in the column.
2. "Pool" PCN refers to UA temporary positions, such as adjunct faculty; student employees; and other non-permanent staff. Multiple incumbents may share the same labor pool position number and pooled budget.

PCN	Job Class Title	Location	Time Status	Split/ Count	Employee Class	Benefit Rate	Annual	Annual	Total	UGF
							Budgeted Salary	Benefits	Costs	Estimate
309175	Crafts & Trades II (CT2)	Anchorage	FT		AHECTE- Labor Trades & Crafts	46.0%	51,464	23,673	75,137	0
309186	Fac Svcs-MO&U Supervisor 4	Anchorage	FT		APT - Exempt Employees	41.2%	187,261	77,152	264,413	0
309190	Safety Svcs-Police 2	Anchorage	FT		PERS - Classified	51.8%	78,026	40,417	118,443	60,801
309193	Admin Specialist 1	Anchorage	FT		PERS - Classified	51.8%	53,600	27,765	81,365	0
309194	Research Professional 2	Anchorage	FT		APT - Exempt Employees	41.2%	118,400	48,781	167,181	0
309195	Training & Development 5	Anchorage	FT		APT - Exempt Employees	41.2%	82,200	33,866	116,066	59,581
309196	Fiscal Professional 1	Anchorage	FT		PERS - Classified	51.8%	66,078	34,228	100,306	0
309197	Instructional Designer 3	Anchorage	FT		APT - Exempt Employees	41.2%	71,500	29,458	100,958	51,825
309198	Training & Development 3	Anchorage	FT		PERS - Classified	51.8%	55,200	28,594	83,794	43,014
309199	Crafts & Trades II (CT2)	Anchorage	FT		AHECTE- Labor Trades & Crafts	46.0%	7,814	3,594	11,408	0
309201	Student Svcs Professional 3	Anchorage	FT		APT - Exempt Employees	41.2%	51,964	21,409	73,373	37,665
309210	Admin Specialist 2	Anchorage	FT		PERS - Classified	51.8%	38,598	19,994	58,592	0
309304	Campus Services Generalist 3	Anchorage	FT		PERS - Classified	51.8%	131,075	67,897	198,972	102,140
309306	Assistant Professor	Anchorage	FT		United Academics BU	30.8%	74,310	22,887	97,197	49,895
309307	Admin Generalist 2	Anchorage	FT		PERS - Classified	51.8%	41,000	21,238	62,238	31,949
309308	Training & Development 5	Anchorage	FT		APT - Exempt Employees	41.2%	83,000	34,196	117,196	60,161
309309	Admin Specialist 4	Anchorage	FT		APT - Exempt Employees	41.2%	99,230	40,883	140,113	30,928
309310	Student Svcs Professional 2	Anchorage	FT		PERS - Classified	51.8%	52,490	27,190	79,680	40,903
309312	Training & Development 4	Anchorage	FT		APT - Exempt Employees	41.2%	68,000	28,016	96,016	49,289
309313	Training & Development 5	Anchorage	FT		APT - Exempt Employees	41.2%	87,200	35,926	123,126	63,205
309316	Student Svcs Professional 3	Anchorage	FT		APT - Exempt Employees	41.2%	75,849	31,250	107,099	54,978
309317	Training & Development 4	Anchorage	FT		APT - Exempt Employees	41.2%	80,530	33,178	113,708	39,108
309320	Training & Development 4	Anchorage	FT		APT - Exempt Employees	41.2%	64,031	26,381	90,412	36,201
309321	Assistant Professor	Anchorage	FT		United Academics BU	30.8%	77,168	23,768	100,936	25,907
309323	Mental Health Provider 2	Anchorage	FT		APT - Exempt Employees	41.2%	91,643	37,757	129,400	66,426
309325	Term Instructor	Anchorage	FT		United Academics BU	30.8%	59,020	18,178	77,198	39,629
309326	Mental Health Provider 4	Anchorage	FT		APT - Exempt Employees	41.2%	99,300	40,912	140,212	71,976
309327	Administrative Management 3	Anchorage	FT		APT - Exempt Employees	41.2%	84,590	34,851	119,441	0
309328	Mental Health Provider 2	Anchorage	FT		APT - Exempt Employees	41.2%	51,982	21,417	73,399	0
309330	Student Svcs Professional 2	Anchorage	FT		PERS - Classified	51.8%	53,537	27,732	81,269	41,718
309331	Physical Health Provider 2	Anchorage	FT		PERS - Classified	51.8%	47,980	24,854	72,834	0
309332	Mental Health Provider 4	Anchorage	FT		APT - Exempt Employees	41.2%	92,648	38,171	130,819	0

Personal Services Expenditure Detail
University of Alaska

Component: Anchorage Campus (753)

RDU: University of Alaska Anchorage (235)

Notes:

1. If a position is split, an asterisk (*) will appear in the Split/Count column. If the split position is also counted in the component, two asterisks (**) will appear in the column.
2. "Pool" PCN refers to UA temporary positions, such as adjunct faculty; student employees; and other non-permanent staff. Multiple incumbents may share the same labor pool position number and pooled budget.

PCN	Job Class Title	Location	Time Status	Split/ Count	Employee Class	Benefit Rate	Annual	Annual	Total	UGF
							Budgeted Salary	Benefits	Costs	Estimate
309333	Term Instructor	Anchorage	FT		Non-Represented Faculty	25.1%	96,680	24,267	120,947	30,434
309334	Assistant Professor	Anchorage	FT		United Academics BU	30.8%	93,099	28,674	121,773	62,511
309335	Admin Specialist 2	Anchorage	PT		PERS - Classified	51.8%	52,600	27,247	79,847	40,988
309339	Physical Health Provider 4	Anchorage	FT		APT - Exempt Employees	41.2%	46,324	19,085	65,409	0
309341	Communications Manager 2	Anchorage	FT		APT - Exempt Employees	41.2%	79,696	32,835	112,531	57,766
309342	Assistant Professor	Anchorage	FT		United Academics BU	30.8%	93,099	28,674	121,773	62,511
309343	Admin Specialist 2	Anchorage	FT		PERS - Classified	51.8%	31,882	16,515	48,397	11,882
309347	Administrative Management 4	Anchorage	FT		APT - Exempt Employees	41.2%	117,600	48,451	166,051	85,240
309348	Training & Development 4	Anchorage	FT		APT - Exempt Employees	41.2%	73,700	30,364	104,064	53,420
309349	IS Ops Technician 2	Anchorage	FT		PERS - Classified	51.8%	57,405	29,736	87,141	23,261
309350	Student Svcs Manager 2	Anchorage	FT		APT - Exempt Employees	41.2%	87,155	35,908	123,063	63,173
309351	Student Svcs Technician 3	Anchorage	FT		PERS - Classified	51.8%	60,910	31,551	92,461	47,464
309353	Physical Health Provider 3	Anchorage	FT		APT - Exempt Employees	41.2%	74,335	30,626	104,961	0
309354	Admin Specialist 3	Anchorage	FT		APT - Exempt Employees	41.2%	47,115	19,411	66,526	34,150
309354	Administrative Management 3	Anchorage	FT		APT - Exempt Employees	41.2%	122,300	50,388	172,688	88,647
309356	Term Asst Professor	Anchorage	FT		United Academics BU	30.8%	63,497	19,557	83,054	42,635
309357	Training & Development 4	Anchorage	FT		APT - Exempt Employees	41.2%	82,133	33,839	115,972	5,953
309358	Term Instructor	Anchorage	FT		United Academics BU	30.8%	62,127	19,135	81,262	41,715
309359	Training & Development 4	Anchorage	FT		APT - Exempt Employees	41.2%	76,600	31,559	108,159	55,522
309364	Associate Director/Faculty	Anchorage	FT		Non-Represented Faculty	25.1%	63,518	15,943	79,461	40,790
309365	Term Instructor	Anchorage	FT		United Academics BU	30.8%	62,127	19,135	81,262	41,715
309366	Research Technician 2	Anchorage	FT		PERS - Classified	51.8%	24,428	12,654	37,082	19,035
309369	Assistant Professor	Anchorage	FT		United Academics BU	30.8%	76,424	23,539	99,963	51,314
309373	Admin Generalist 3	Anchorage	FT		PERS - Classified	51.8%	42,616	22,075	64,691	0
309374	Admin Specialist 1	Anchorage	FT		PERS - Classified	51.8%	50,929	26,381	77,310	39,686
309375	Mental Health Provider 1	Anchorage	FT		APT - Exempt Employees	41.2%	50,020	20,608	70,628	0
309376	Mental Health Provider 2	Anchorage	FT		APT - Exempt Employees	41.2%	59,179	24,382	83,561	0
309378	Assistant Professor	Anchorage	FT		United Academics BU	30.8%	93,099	28,674	121,773	62,511
309379	Term Instructor	Anchorage	FT		United Academics BU	30.8%	62,127	19,135	81,262	41,715
309382	Admin Generalist 2	Anchorage	FT		PERS - Classified	51.8%	65,291	33,821	99,112	50,878
309383	Term Instructor	Anchorage	FT		United Academics BU	30.8%	67,014	20,640	87,654	44,996
309384	Fiscal Professional 2	Anchorage	FT		APT - Exempt Employees	41.2%	60,355	24,866	85,221	43,747

Personal Services Expenditure Detail
University of Alaska

Component: Anchorage Campus (753)

RDU: University of Alaska Anchorage (235)

Notes:

1. If a position is split, an asterisk (*) will appear in the Split/Count column. If the split position is also counted in the component, two asterisks (**) will appear in the column.
2. "Pool" PCN refers to UA temporary positions, such as adjunct faculty; student employees; and other non-permanent staff. Multiple incumbents may share the same labor pool position number and pooled budget.

PCN	Job Class Title	Location	Time Status	Split/Count	Employee Class	Benefit Rate	Annual Budgeted Salary	Annual Benefits	Total Costs	UGF Estimate
309385	Research Professional 3	Anchorage	FT		APT - Exempt Employees	41.2%	80,487	33,161	113,648	58,339
309425	Communications Specialist 3	Anchorage	FT		PERS - Classified	51.8%	61,808	32,017	93,825	48,164
309426	Training & Development 5	Anchorage	FT		APT - Exempt Employees	41.2%	87,200	35,926	123,126	63,205
309427	Research Professional 2	Anchorage	FT		APT - Exempt Employees	41.2%	67,300	27,728	95,028	0
540104	Professor	Anchorage	FT	*	United Academics BU	30.8%	39,558	12,184	51,742	26,561
Pool	UA Labor Pool	Anchorage	PT		Labor Pool	0.0%	5,831,611		5,831,611	2,589,419
Total Position Costs							102,308,463	36,249,557	138,558,021	65,622,799

Full Time Positions:	1,170
Part Time Positions:	19
Positions in Component:	1,189

Federal Receipts (1002)	4,637,715
General Fund Receipts (1004)	68,023,500
Interagency Receipts (1007)	954,941
University Receipts (1048)	61,253,442
UA Intra-agency Transfers (1174)	8,365,084
UA Funding	143,234,681