

# **State of Alaska FY2025 Governor's Operating Budget**

## **University of Alaska Kenai Peninsula College Component Budget Summary**

**Component: Kenai Peninsula College**

**Contribution to Department's Mission**

Kenai Peninsula College (KPC) is part of the community campus system of the University of Alaska Anchorage, and is comprised of the Kenai River Campus in Soldotna, Kachemak Bay Campus in Homer, and Resurrection Bay Extension Site in Seward. Kenai Peninsula College is committed to excellence in education, training and lifelong learning by offering accessible opportunities in a supportive environment.

**Core Services**

- Academics: KPC offers two-year Associate of Arts and Associate of Applied Science degrees, as well as courses leading to technical certificates. Other four-year degree programs are available at KPC via distance delivery through other University of Alaska campuses. KPC also offers the UAA 2-year nursing degree at both campuses.
- Academics: KPC offers Occupational Endorsement Certificates in Ahtna Language, Conservation Ecology, Corrections, Dena'ina Language, Marine Mammal Biology, Petroleum Production, and Valve Repair and Maintenance. KPC offers Undergraduate Certificates in Ahtna Language Instruction, Corrections, Dena'ina Language Instruction, Petroleum Technology, and Welding Technology.
- Academics: KPC offers the Associate of Arts General Program and the Associate of Arts in Alaska Native Studies. It offers Associate of Applied Science degrees in General Business, Industrial Process instrumentation, Paramedical Technology, Process Technology, and Technology.
- Student Success and Access: KPC focuses on student success by providing academic advising, transfer information, financial aid assistance, library services, student counseling and advising, and free tutoring. It also serves students needing Adult Basic Education, GED tutoring and testing, English as a Second Language, and literacy instruction.
- Dual Enrollment: KPC provides several ways for high school students to earn college credit, including individual admission as a non-degree seeking student, the Middle College School, and Career and Technical Education opportunities for post-secondary credit in partnership with the Kenai Peninsula Borough School District (KPBSD), and the JumpStart Program, supported by both the Kenai Peninsula Borough and the KPBSD.
- Continuing Education and Professional Development: KPC partners with numerous organizations and agencies to provide professional development opportunities.
- Community Partnerships: KPC partners with over 100 businesses, community groups, organizations and agencies such as: KPBSD Peninsula Job Center, Kenaitze Indian Tribe, Alaska State Parks, Alaska Department of Fish and Game, Cook Inletkeeper, Center for Alaskan Coastal Studies, Icicle Seafoods, Marathon, Homer Soil and Water Conservation District, the Kachemak Bay Land Trust, South Peninsula Hospital, Central Peninsula General Hospital, Homer Marine Trades Association, and more.

**Major Component Accomplishments in 2023**

See University of Alaska Anchorage Results Delivery Unit.

**Key Component Challenges**

See University of Alaska Anchorage Results Delivery Unit.

**Significant Changes in Results to be Delivered in FY2025**

See University of Alaska Anchorage Results Delivery Unit.

**Statutory and Regulatory Authority**

No statutes and regulations.

**Contact Information**

**Contact:** Michelle Rizk, Vice President, University Relations  
**Phone:** (907) 450-8187  
**E-mail:** marizk@alaska.edu

Kenai Peninsula College Personal Services Information					
Authorized Positions			Personal Services Costs		
	<u>FY2024</u> <u>Management</u> <u>Plan</u>	<u>FY2025</u> <u>Governor</u>			
Full-time	75	75	Annual Salaries		0
Part-time	13	13	Premium Pay		0
Nonpermanent	0	0	Annual Benefits		0
			<i>Less % Vacancy Factor</i>		( )
			Lump Sum Premium Pay		0
<b>Totals</b>	<b>88</b>	<b>88</b>	<b>Total Personal Services</b>		

Position Classification Summary					
Job Class Title	Anchorage	Fairbanks	Juneau	Others	Total
No personal services.					
<b>Totals</b>	<b>0</b>	<b>0</b>	<b>0</b>	<b>0</b>	<b>0</b>

**Component Detail All Funds**  
**University of Alaska**

**Component:** Kenai Peninsula College (756)  
**RDU:** University of Alaska Anchorage (235)

Non-Formula Component

	FY2023 Actuals	FY2024 Enrolled	FY2024 Authorized	FY2024 Management Plan	FY2025 Governor Adjusted Base	FY2025 Governor	FY2024 Management Plan vs FY2025 Governor		
1000 Personal Services	9,024.4	11,911.0	11,911.0	11,454.8	11,454.8	11,454.8	0.0	0.0%	
2000 Travel	73.8	138.8	138.8	1,202.8	1,202.8	1,202.8	0.0	0.0%	
3000 Services	2,682.4	2,505.3	2,505.3	2,976.0	2,976.0	2,976.0	0.0	0.0%	
4000 Commodities	507.5	1,750.4	1,750.4	530.1	530.1	530.1	0.0	0.0%	
5000 Capital Outlay	185.1	187.5	187.5	216.8	216.8	216.8	0.0	0.0%	
7000 Grants, Benefits	421.7	331.0	331.0	581.0	201.4	201.4	-379.6	-65.3%	
8000 Miscellaneous	0.0	7.0	7.0	7.0	7.0	7.0	0.0	0.0%	
<b>Totals</b>	<b>12,894.9</b>	<b>16,831.0</b>	<b>16,831.0</b>	<b>16,968.5</b>	<b>16,588.9</b>	<b>16,588.9</b>	<b>-379.6</b>	<b>-2.2%</b>	
<b>Fund Sources:</b>									
1002 Fed Rcpts (Fed)	16.7	1,000.8	1,000.8	1,000.8	1,000.8	1,000.8	0.0	0.0%	
1004 Gen Fund (UGF)	6,414.9	6,818.1	6,818.1	6,818.1	6,818.1	6,818.1	0.0	0.0%	
1007 I/A Rcpts (Other)	246.9	489.3	489.3	489.3	489.3	489.3	0.0	0.0%	
1048 Univ Rcpt (DGF)	5,964.7	8,212.5	8,212.5	8,212.5	8,212.5	8,212.5	0.0	0.0%	
1151 VoTech Ed (DGF)	251.7	242.1	242.1	379.6	0.0	0.0	-379.6	-100.0%	
1174 UA I/A (Other)	0.0	68.2	68.2	68.2	68.2	68.2	0.0	0.0%	
<b>Unrestricted General (UGF)</b>	<b>6,414.9</b>	<b>6,818.1</b>	<b>6,818.1</b>	<b>6,818.1</b>	<b>6,818.1</b>	<b>6,818.1</b>	<b>0.0</b>	<b>0.0%</b>	
<b>Designated General (DGF)</b>	<b>6,216.4</b>	<b>8,454.6</b>	<b>8,454.6</b>	<b>8,592.1</b>	<b>8,212.5</b>	<b>8,212.5</b>	<b>-379.6</b>	<b>-4.4%</b>	
<b>Other Funds</b>	<b>246.9</b>	<b>557.5</b>	<b>557.5</b>	<b>557.5</b>	<b>557.5</b>	<b>557.5</b>	<b>0.0</b>	<b>0.0%</b>	
<b>Federal Funds</b>	<b>16.7</b>	<b>1,000.8</b>	<b>1,000.8</b>	<b>1,000.8</b>	<b>1,000.8</b>	<b>1,000.8</b>	<b>0.0</b>	<b>0.0%</b>	
<b>Positions:</b>									
Permanent Full Time	83	83	83	75	75	75	0	0.0%	
Permanent Part Time	5	5	5	13	13	13	0	0.0%	
Non Permanent	0	0	0	0	0	0	0	0.0%	

**Change Record Detail - Multiple Scenarios with Descriptions**  
**University of Alaska**

**Component:** Kenai Peninsula College (756)  
**RDU:** University of Alaska Anchorage (235)

Scenario/Change Record Title	Trans Type	Totals	Personal Services	Travel	Services	Commodities	Capital Outlay	Grants, Benefits	Miscellaneous	Positions		NP
										PFT	PPT	
***** Changes From FY2024 Enrolled To FY2024 Authorized *****												
<b>University of Alaska Funding from Alaska TVEP Account Sec57(c) Ch1 SLA2023 P143 L29 (HB39)</b>												
1151 VoTech Ed	Enrol(L)	242.1	0.0	0.0	0.0	0.0	0.0	242.1	0.0	0	0	0
<b>FY2024 Enrolled</b>												
1002 Fed Rcpts	Enrolled	1,000.8	11,911.0	138.8	2,505.3	1,750.4	187.5	88.9	7.0	83	5	0
1004 Gen Fund		6,818.1										
1007 I/A Rcpts		489.3										
1048 Univ Rcpt		8,212.5										
1174 UA I/A		68.2										
<b>Subtotal</b>		<b>16,831.0</b>	<b>11,911.0</b>	<b>138.8</b>	<b>2,505.3</b>	<b>1,750.4</b>	<b>187.5</b>	<b>331.0</b>	<b>7.0</b>	<b>83</b>	<b>5</b>	<b>0</b>
***** Changes From FY2024 Authorized To FY2024 Management Plan *****												
<b>Transfer Technical Vocational Education Program Funds to Align with Distributions</b>												
1151 VoTech Ed	Trin	137.5	0.0	0.0	137.5	0.0	0.0	0.0	0.0	0	0	0

Transfers between allocations to reallocate Technical Vocational Education Program funding to FY2024 programs approved by the University of Alaska Workforce Development Committee.

- Budget Reductions/Additions – Systemwide: (\$96.2)
- Systemwide Services: (\$22.1)
- Anchorage Campus: (\$315.3)
- Kenai Peninsula College: \$137.5
- Kodiak College: \$201.9
- Matanuska-Susitna College: (\$68.0)
- Fairbanks Campus: \$172.3
- Bristol Bay Campus: \$11.4
- Northwest Campus: \$19.5
- University of Alaska Fairbanks Community Technical College: (\$205.5)
- Juneau Campus: (\$90.7)
- Ketchikan Campus: \$234.0
- Sitka Campus: \$21.2

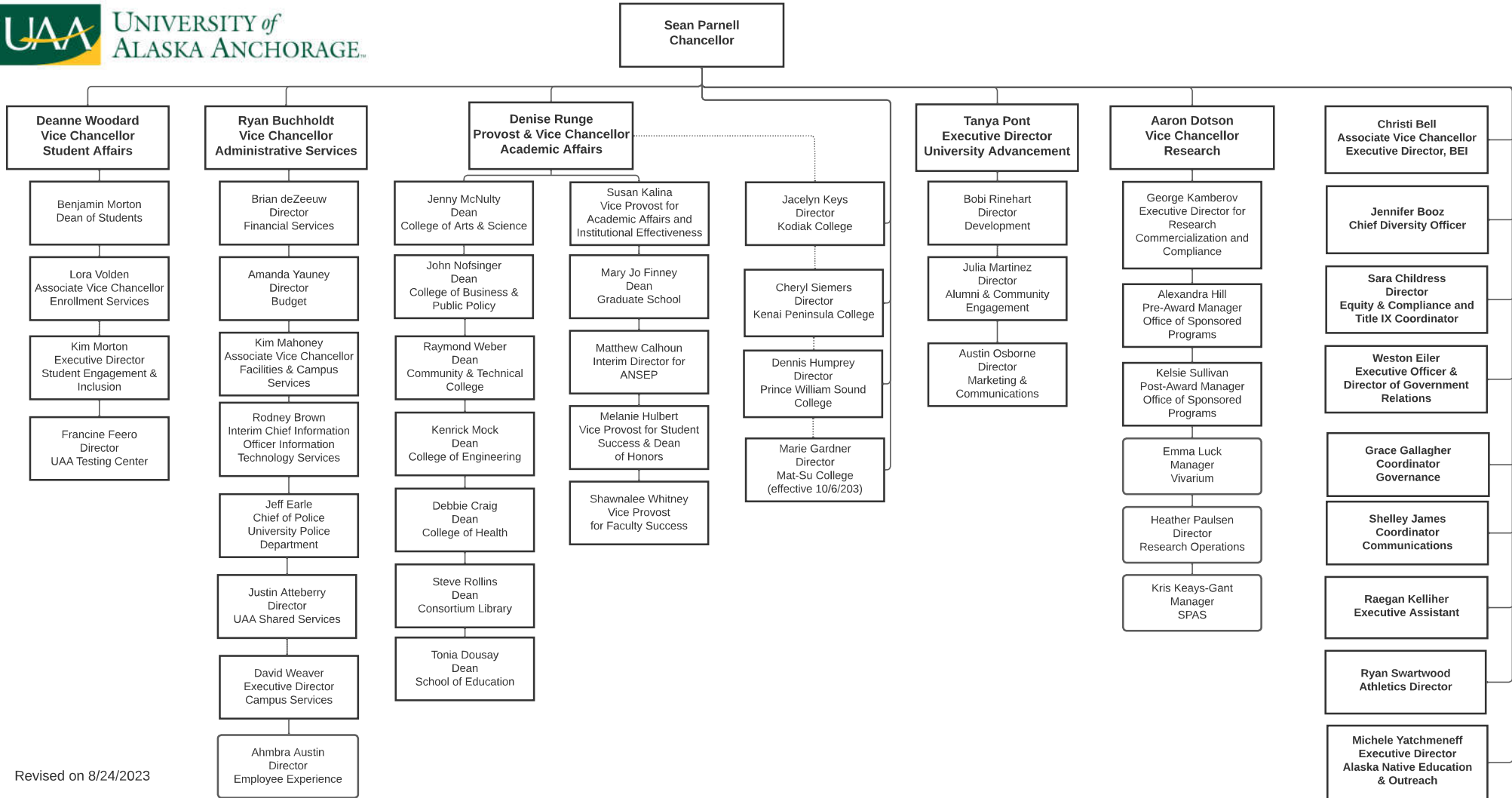
<b>Align Authority with Anticipated Expenditures</b>												
	LIT	0.0	-456.2	1,064.0	333.2	-1,220.3	29.3	250.0	0.0	0	0	0

Transfers between expenditure categories that University management and the Board of Regents have deemed necessary to accurately reflect expenditure levels for FY2024.

**Change Record Detail - Multiple Scenarios with Descriptions**  
**University of Alaska**

**Component:** Kenai Peninsula College (756)  
**RDU:** University of Alaska Anchorage (235)

Scenario/Change Record Title	Trans Type	Totals	Personal Services	Travel	Services	Commodities	Capital Outlay	Grants, Benefits	Miscellaneous	Positions		NP
										PFT	PPT	
<b>Position Adjustments for Anticipated Position Count</b>												
PosAdj		0.0	0.0	0.0	0.0	0.0	0.0	0.0	0.0	-8	8	0
Position adjustments deemed necessary to accurately reflect FY2024 Management Plan.												
<b>Subtotal</b>		<b>16,968.5</b>	<b>11,454.8</b>	<b>1,202.8</b>	<b>2,976.0</b>	<b>530.1</b>	<b>216.8</b>	<b>581.0</b>	<b>7.0</b>	<b>75</b>	<b>13</b>	<b>0</b>
***** Changes From FY2024 Management Plan To FY2025 Governor Adjusted Base *****												
<b>Reverse University of Alaska Funding from Alaska TVEP Account Sec57(c) Ch1 SLA2023 P143 L29 (HB39)</b>												
OTI		-379.6	0.0	0.0	0.0	0.0	0.0	-379.6	0.0	0	0	0
1151 VoTech Ed		-379.6										
Reversal of FY2024 TVEP distribution.												
<b>Subtotal</b>		<b>16,588.9</b>	<b>11,454.8</b>	<b>1,202.8</b>	<b>2,976.0</b>	<b>530.1</b>	<b>216.8</b>	<b>201.4</b>	<b>7.0</b>	<b>75</b>	<b>13</b>	<b>0</b>
***** Changes From FY2025 Governor Adjusted Base To FY2025 Governor *****												
<b>Totals</b>		<b>16,588.9</b>	<b>11,454.8</b>	<b>1,202.8</b>	<b>2,976.0</b>	<b>530.1</b>	<b>216.8</b>	<b>201.4</b>	<b>7.0</b>	<b>75</b>	<b>13</b>	<b>0</b>





Personal Services Expenditure Detail  
University of Alaska

**Component:** Kenai Peninsula College (756)

**RDU:** University of Alaska Anchorage (235)

**Notes:**

1. If a position is split, an asterisk (\*) will appear in the Split/Count column. If the split position is also counted in the component, two asterisks (\*\*) will appear in the column.
2. "Pool" PCN refers to UA temporary positions, such as adjunct faculty; student employees; and other non-permanent staff. Multiple incumbents may share the same labor pool position number and pooled budget.

PCN	Job Class Title	Location	Time Status	Split/Count	Employee Class	Benefit Rate	Annual Budgeted	Annual Benefits	Total Costs	UGF Estimate
500001	Assistant Professor	Soldotna	FT		United Academics BU	30.8%	68,268	21,027	89,295	40,164
500002	Assistant Professor	Soldotna	FT		United Academics BU	30.8%	74,195	22,852	97,047	43,651
500003	Professor	Soldotna	FT		United Academics BU	30.8%	92,505	28,492	120,997	54,423
500004	Assistant Professor	Soldotna	FT		United Academics BU	30.8%	79,165	24,383	103,548	46,574
500006	Associate Professor	Soldotna	FT		United Academics BU	30.8%	75,136	23,142	98,278	44,204
500007	Assistant Professor	Soldotna	FT		United Academics BU	30.8%	62,870	19,364	82,234	36,988
500008	Term Asst Professor	Soldotna	FT		United Academics BU	30.8%	85,600	26,365	111,965	50,360
500010	Assistant Professor	Soldotna	FT		United Academics BU	30.8%	92,505	28,492	120,997	54,423
500011	Student Svcs Manager 3	Soldotna	FT		APT - Exempt Employees	41.2%	94,421	38,901	133,322	59,967
500013	Assistant Professor	Soldotna	FT		United Academics BU	30.8%	86,863	26,754	113,617	51,103
500014	Assistant Professor	Soldotna	FT		United Academics BU	30.8%	62,754	19,328	82,082	36,920
500015	Assistant Professor	Soldotna	FT		United Academics BU	30.8%	75,136	23,142	98,278	44,204
500017	Associate Professor	Soldotna	FT		United Academics BU	30.8%	84,630	26,066	110,696	49,790
500018	Assistant Professor	Soldotna	FT		United Academics BU	30.8%	80,981	24,942	105,923	47,643
500019	Assistant Professor	Soldotna	FT		United Academics BU	30.8%	75,136	23,142	98,278	44,204
500021	Assistant Professor	Soldotna	FT		United Academics BU	30.8%	74,080	22,817	96,897	43,583
500023	Associate Professor	Soldotna	FT		United Academics BU	30.8%	115,404	35,544	150,948	67,895
500027	Professor	Soldotna	FT		United Academics BU	30.8%	95,807	29,509	125,316	56,365
500030	Professor	Soldotna	FT		United Academics BU	30.8%	89,054	27,429	116,483	52,392
500085	Term Asst Professor	Soldotna	FT		United Academics BU	30.8%	74,300	22,884	97,184	43,712
500086	Assistant Professor	Soldotna	FT		United Academics BU	30.8%	68,680	21,153	89,833	40,406
500105	Administrative Management 4	Soldotna	FT		APT - Exempt Employees	41.2%	129,835	53,492	183,327	82,458
500106	Administrative Management 2	Soldotna	FT		APT - Exempt Employees	41.2%	67,963	28,001	95,964	43,163
500107	Administrative Management 3	Soldotna	FT		APT - Exempt Employees	41.2%	97,264	40,073	137,337	61,772
500108	Communications Manager 1	Soldotna	PT		APT - Exempt Employees	41.2%	48,520	19,990	68,510	30,815
500151	Admin Specialist 3	Soldotna	FT		APT - Exempt Employees	41.2%	66,638	27,455	94,093	42,322
500153	Admin Generalist 4	Soldotna	PT		PERS - Classified	51.8%	52,490	27,190	79,680	35,839
500154	Student Svcs Professional 2	Soldotna	PT		PERS - Classified	51.8%	55,717	28,861	84,578	38,042
500158	Human Resources Technician 4	Soldotna	FT		PERS - Classified	51.8%	52,490	27,190	79,680	35,839
500159	Fiscal Professional 3	Soldotna	FT		APT - Exempt Employees	41.2%	67,300	27,728	95,028	42,742
500160	Fiscal Technician 2	Soldotna	FT		PERS - Classified	51.8%	47,980	24,854	72,834	32,760
500163	Fiscal Technician 3	Soldotna	FT		PERS - Classified	51.8%	52,490	27,190	79,680	14,336

Personal Services Expenditure Detail  
University of Alaska

**Component:** Kenai Peninsula College (756)

**RDU:** University of Alaska Anchorage (235)

**Notes:**

1. If a position is split, an asterisk (\*) will appear in the Split/Count column. If the split position is also counted in the component, two asterisks (\*\*) will appear in the column.
2. "Pool" PCN refers to UA temporary positions, such as adjunct faculty; student employees; and other non-permanent staff. Multiple incumbents may share the same labor pool position number and pooled budget.

PCN	Job Class Title	Location	Time Status	Split/Count	Employee Class	Benefit Rate	Annual Budgeted	Annual Benefits	Total Costs	UGF Estimate
500164	Stu Svcs Profess 2 (Exempt)	Soldotna	FT		APT - Exempt Employees	41.2%	57,982	23,889	81,871	36,824
500166	Library Technician 3	Soldotna	PT		PERS - Classified	51.8%	24,192	12,531	36,723	16,518
500170	Student Svcs Professional 2	Soldotna	FT		PERS - Classified	51.8%	60,910	31,551	92,461	41,588
500181	Research Technician 4	Soldotna	PT		PERS - Classified	51.8%	38,418	19,901	58,319	26,231
500184	IS Manager 1	Soldotna	FT		APT - Exempt Employees	41.2%	75,849	31,250	107,099	48,172
500185	Student Svcs Technician 2	Soldotna	FT		PERS - Classified	51.8%	43,898	22,739	66,637	14,986
500186	Associate Professor	Soldotna	FT		United Academics BU	30.8%	74,211	22,857	97,068	43,660
500188	Director (Academic-Faculty)	Soldotna	FT		Non-Represented Faculty	25.1%	124,919	31,355	156,274	70,290
500189	Associate Professor	Soldotna	FT		United Academics BU	30.8%	100,204	30,863	131,067	58,952
500192	Admin Specialist 1	Soldotna	PT		PERS - Classified	51.8%	20,813	10,781	31,594	14,211
500205	Fiscal Technician 3	Soldotna	FT		PERS - Classified	51.8%	49,476	25,629	75,105	33,781
500206	Fac Svcs-MO&U Supervisor 5	Soldotna	FT		APT - Exempt Employees	41.2%	80,530	33,178	113,708	51,145
500209	Crafts & Trades III (CT3)	Soldotna	FT		AHECTE- Labor Trades & Crafts	46.0%	81,702	37,583	119,285	53,653
500210	Maint Service Worker IV (MSW4)	Soldotna	FT		AHECTE- Labor Trades & Crafts	46.0%	47,325	21,770	69,095	31,078
500216	Admin Specialist 1	Soldotna	FT		PERS - Classified	51.8%	50,930	26,382	77,312	34,774
500220	Admin Generalist 3	Soldotna	FT		PERS - Classified	51.8%	32,107	16,631	48,738	0
500221	Admin Specialist 2	Soldotna	FT		PERS - Classified	51.8%	54,584	28,275	82,859	37,269
500222	IS Net Technician 7	Soldotna	FT		PERS - Classified	51.8%	61,552	31,884	93,436	42,026
500223	Student Svcs Technician 3	Soldotna	FT		PERS - Classified	51.8%	47,083	24,389	71,472	32,147
500224	Fiscal Technician 3	Soldotna	FT		PERS - Classified	51.8%	52,490	27,190	79,680	35,839
500225	Admin Generalist 4	Soldotna	PT		PERS - Classified	51.8%	47,083	24,389	71,472	32,147
500227	Crafts & Trades III (CT3)	Soldotna	FT		AHECTE- Labor Trades & Crafts	46.0%	68,797	31,647	100,444	40,660
500228	Professor	Soldotna	FT		United Academics BU	30.8%	106,357	32,758	139,115	62,572
500300	Instructional Designer 4	Soldotna	FT		APT - Exempt Employees	41.2%	79,696	32,835	112,531	50,615
500301	Assistant Professor	Soldotna	FT		United Academics BU	30.8%	72,898	22,453	95,351	42,887
500302	IS Net Technician 7	Soldotna	FT		PERS - Classified	51.8%	61,551	31,883	93,434	42,026
500303	Instructional Designer 2	Soldotna	FT		PERS - Classified	51.8%	45,632	23,637	69,269	31,156
500304	IS Net Technician 6	Soldotna	FT		PERS - Classified	51.8%	52,490	27,190	79,680	35,839
500305	IS Net Technician 6	Soldotna	PT		PERS - Classified	51.8%	39,305	20,360	59,665	26,837
500306	Communications Specialist 3	Soldotna	PT		PERS - Classified	51.8%	43,054	22,302	65,356	29,396
500307	Maint Service Worker II (MSW2)	Soldotna	FT		AHECTE- Labor Trades & Crafts	46.0%	35,600	16,376	51,976	23,378
500308	Training & Development 3	Soldotna	PT		PERS - Classified	51.8%	37,200	19,270	56,470	25,399

Personal Services Expenditure Detail  
University of Alaska

**Component:** Kenai Peninsula College (756)

**RDU:** University of Alaska Anchorage (235)

**Notes:**

1. If a position is split, an asterisk (\*) will appear in the Split/Count column. If the split position is also counted in the component, two asterisks (\*\*) will appear in the column.
2. "Pool" PCN refers to UA temporary positions, such as adjunct faculty; student employees; and other non-permanent staff. Multiple incumbents may share the same labor pool position number and pooled budget.

PCN	Job Class Title	Location	Time Status	Split/Count	Employee Class	Benefit Rate	Annual Budgeted	Annual Benefits	Total Costs	UGF Estimate
500309	Administrative Professional 2	Soldotna	FT		APT - Exempt Employees	41.2%	60,910	25,095	86,005	15,474
500310	Admin Generalist 3	Soldotna	FT		PERS - Classified	51.8%	33,452	17,328	50,780	11,420
500311	Student Svcs Manager 2	Soldotna	FT		APT - Exempt Employees	41.2%	67,963	28,001	95,964	43,163
500312	Student Svcs Professional 2	Soldotna	FT		PERS - Classified	51.8%	55,183	28,585	83,768	18,839
500313	IS Net Technician 6	Soldotna	FT		PERS - Classified	51.8%	40,002	20,721	60,723	27,312
500314	Admin Generalist 4	Soldotna	FT		PERS - Classified	51.8%	38,754	20,075	58,829	16,670
500315	Training & Development 4	Soldotna	FT		APT - Exempt Employees	41.2%	49,036	20,203	69,239	0
500316	Admin Specialist 3 (NonExempt)	Soldotna	PT		PERS - Classified	51.8%	36,500	18,907	55,407	24,921
500318	Physical Health Provider 3	Soldotna	FT		APT - Exempt Employees	41.2%	38,710	15,949	54,659	0
500319	Training & Development 3	Soldotna	PT		PERS - Classified	51.8%	21,300	11,033	32,333	14,543
500320	Training & Development 2	Soldotna	FT		PERS - Classified	51.8%	27,830	14,416	42,246	8,171
500321	Maint Service Workr III (MSW3)	Soldotna	FT		AHECTE- Labor Trades & Crafts	46.0%	45,491	20,926	66,417	29,873
500322	Student Svcs Technician 3	Soldotna	FT		PERS - Classified	51.8%	47,083	24,389	71,472	0
500323	Library Technician 2	Soldotna	FT		PERS - Classified	51.8%	33,933	17,577	51,510	0
500324	IS Net Technician 7	Soldotna	FT		PERS - Classified	51.8%	57,982	30,035	88,017	39,589
500477	Assistant Professor	Soldotna	FT		United Academics BU	30.8%	71,717	22,089	93,806	42,193
500478	Student Svcs Manager 1	Soldotna	FT		APT - Exempt Employees	41.2%	51,964	21,409	73,373	33,002
500479	Admin Specialist 2	Soldotna	FT		PERS - Classified	51.8%	55,717	28,861	84,578	38,042
500480	Student Svcs Technician 3	Soldotna	FT		PERS - Classified	51.8%	49,476	25,629	75,105	33,781
500496	Director (Admin)	Soldotna	FT		Sr. Administrator	25.1%	151,378	37,996	189,374	85,178
500497	Admin Specialist 3 (NonExempt)	Soldotna	FT		PERS - Classified	51.8%	67,300	34,861	102,161	45,951
500499	Instructor	Soldotna	FT		United Academics BU	30.8%	57,600	17,741	75,341	33,887
500500	Maint Service Worker II (MSW2)	Soldotna	PT		AHECTE- Labor Trades & Crafts	46.0%	35,405	16,286	51,691	23,250
500501	Student Svcs Professional 2	Soldotna	FT		PERS - Classified	51.8%	52,490	27,190	79,680	0
Pool	UA Labor Pool	Soldotna	PT		Labor Pool	0.0%	2,504,708		2,504,708	1,027,743

**Total Position Costs**    8,066,899    2,228,776    10,295,674    4,248,119

Full Time Positions:    75  
Part Time Positions:    13  
**Positions in Component:    88**

Federal Receipts (1002)    810,696  
General Fund Receipts (1004)    4,769,479  
Interagency Receipts (1007)    346,471  
University Receipts (1048)    5,480,447  
UA Intra-agency Transfers (1174)    47,708  
**UA Funding    11,454,800**