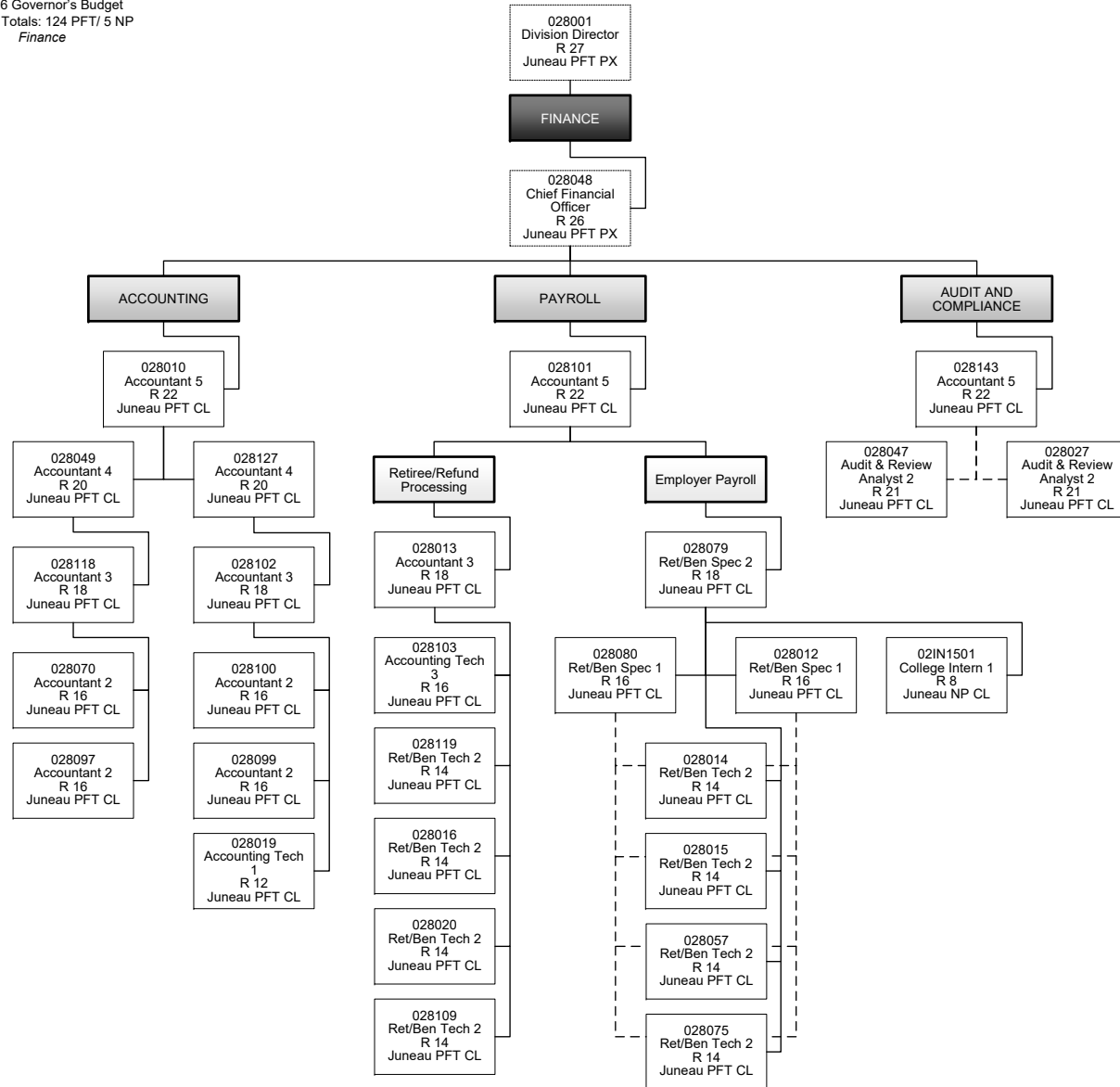
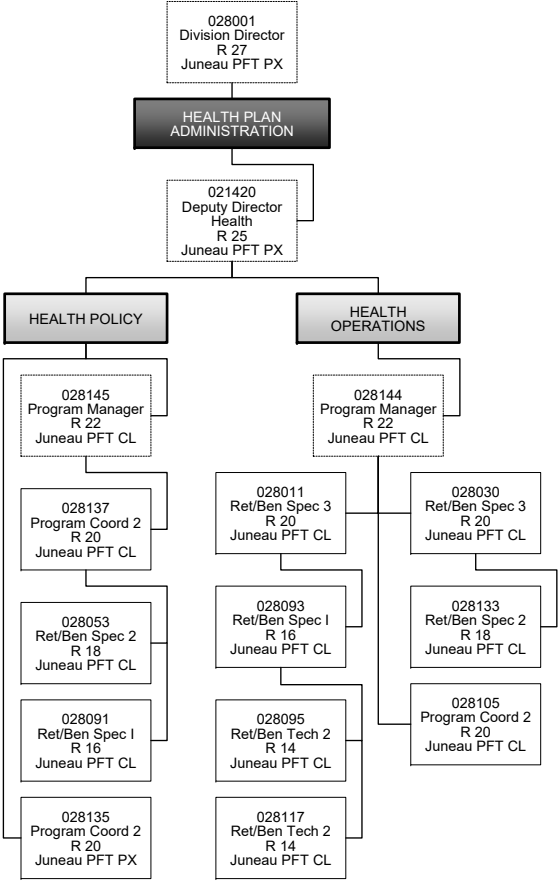


**Department of Administration |**  
 Retirement and Benefits (64)  
 Centralized Administrative Services (13)  
 FY2026 Governor's Budget  
 Position Totals: 124 PFT / 5 NP  
*Finance*



Department of Administration |  
Retirement and Benefits (64)  
Centralized Administrative Services (13)  
Health



028001  
 Division Director  
 R 27  
 Juneau PFT PX

**MEMBER BENEFITS**

028132  
 Deputy Director  
 R 25  
 Juneau PFT PX

**APPEALS/  
 RISK MITIGATION**

028052  
 Ret/Ben Spec 3  
 R 20  
 Juneau PFT CL

028130  
 Ret/Ben Spec 2  
 R 18  
 Juneau PFT CL

028034  
 Ret/Ben Tech 2  
 R 14  
 Juneau PFT CL

**Benefit  
 Attachment**

028078  
 Ret/Ben Spec 2  
 R 18  
 Juneau PFT CL

028060  
 Ret/Ben Tech 2  
 R 14  
 Juneau PFT CL

**BENEFIT  
 PROCESSING**

02T199  
 Ret/Ben Manager  
 R 23  
 Juneau PFT PX

028033  
 Ret/Ben Spec 3  
 R 20  
 Juneau PFT CL

**Certifying**

028140  
 Ret/Ben Spec 2  
 R 18  
 Juneau PFT CL

028141  
 Ret/Ben Spec 2  
 R 18  
 Juneau PFT CL

**Retirement  
 Processing**

028110  
 Ret/Ben Spec 1  
 R 16  
 Juneau PFT CL

028038  
 Ret/Ben Tech 2  
 R 14  
 Juneau PFT CL

028044  
 Ret/Ben Tech 2  
 R 14  
 Juneau PFT CL

028081  
 Ret/Ben Tech 2  
 R 14  
 Juneau PFT CL

028138  
 Ret/Ben Tech 2  
 R 14  
 Juneau PFT CL

028139  
 Ret/Ben Tech 2  
 R 14  
 Juneau PFT CL

**Survivor**

028126  
 Ret/Ben Spec 1  
 R 16  
 Juneau PFT CL

028111  
 Ret/Ben Tech 2  
 R 14  
 Juneau PFT CL

028112  
 Ret/Ben Tech 2  
 R 14  
 Juneau PFT CL

028113  
 Ret/Ben Tech 2  
 R 14  
 Juneau PFT CL

028128  
 Ret/Ben Tech 2  
 R 14  
 Juneau PFT CL

**Adjustments/  
 Disability/DCP**

028096  
 Ret/Ben Spec 1  
 R 16  
 Juneau PFT CL

028084  
 Ret/Ben Tech 2  
 R 14  
 Juneau PFT CL

028039  
 Ret/Ben Tech 2  
 R 14  
 Juneau PFT CL

028114  
 Ret/Ben Tech 2  
 R 14  
 Juneau PFT CL

028050  
 Ret/Ben Tech 1  
 R 12  
 Juneau PFT CL

028115  
 Ret/Ben Tech 1  
 R 12  
 Juneau PFT CL

028021  
 Ret/Ben Spec 3  
 R 20  
 Juneau PFT CL

02N18014  
 Ret/Ben Tech 2  
 R 14  
 Juneau NP CL

02N15009  
 Ret/Ben Tech 1  
 R 12  
 Juneau NP CL

02N15010  
 Ret/Ben Tech 1  
 R 12  
 Juneau NP CL

**COUNSELING/  
 BENEFIT EDUCATION**

028040  
 Ret/Ben Spec 3  
 R 20  
 Juneau PFT CL

**Anchorage**

028032  
 Ret/Ben Spec 2  
 R 18  
 Anchorage PFT CL

028051  
 Ret/Ben Spec 2  
 R 18  
 Anchorage PFT CL

028071  
 Ret/Ben Spec 2  
 R 18  
 Anchorage PFT CL

028072  
 Ret/Ben Spec 2  
 R 18  
 Anchorage PFT CL

021974  
 Office Assist 1  
 R 8  
 Anchorage PFT CL

**Juneau**

028022  
 Ret/Ben Spec 2  
 R 18  
 Juneau PFT CL

028077  
 Ret/Ben Spec 2  
 R 18  
 Juneau PFT CL

028104  
 Ret/Ben Spec 2  
 R 18  
 Juneau PFT CL

028134  
 Ret/Ben Spec 2  
 R 18  
 Juneau PFT CL

028142  
 Ret/Ben Spec 2  
 R 18  
 Juneau PFT CL

**MEMBER EDUCATION  
 CENTER**

028083  
 Ret/Ben Spec 3  
 R 20  
 Juneau PFT CL

028116  
 Ret/Ben Spec 2  
 R 18  
 Juneau PFT CL

028074  
 Ret/Ben Spec 1  
 R 16  
 Juneau PFT CL

028107  
 Ret/Ben Spec 1  
 R 16  
 Juneau PFT CL

028125  
 Ret/Ben Spec 1  
 R 16  
 Juneau PFT CL

028089  
 Ret/Ben Tech 2  
 R 14  
 Juneau PFT CL

028121  
 Ret/Ben Tech 2  
 R 14  
 Juneau PFT CL

**Clerical  
 Support**

028088  
 Office Assist 2  
 R 10  
 Juneau PFT CL

028041  
 Ret/Ben Spec 2  
 R 18  
 Juneau PFT CL

028090  
 Ret/Ben Spec 1  
 R 16  
 Juneau PFT CL

028017  
 Ret/Ben Tech 2  
 R 14  
 Juneau PFT CL

028054  
 Ret/Ben Tech 2  
 R 14  
 Juneau PFT CL

028069  
 Ret/Ben Tech 2  
 R 14  
 Juneau PFT CL

028085  
 Ret/Ben Tech 2  
 R 14  
 Juneau PFT CL

028129  
 Ret/Ben Tech 2  
 R 14  
 Juneau PFT CL

