

State of Alaska FY2026 Governor's Operating Budget

Department of Administration Public Defender Agency Component Budget Summary

Component: Public Defender Agency

Contribution to Department's Mission

To provide constitutionally mandated legal representation to indigent clients appointed by the court.

Results

(Additional performance information is available on the web at <https://omb.alaska.gov/results>.)

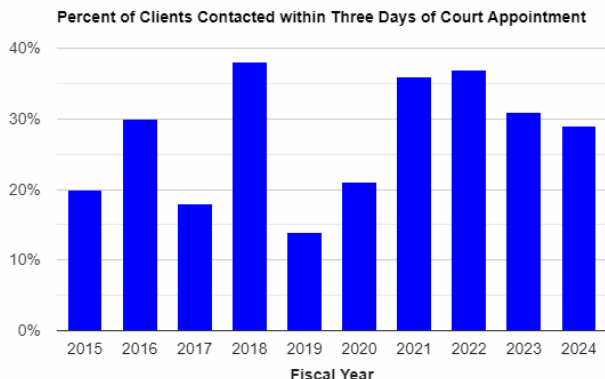
Core Services

- Establish timely and effective communications with clients regarding legal rights, the legal process, charges, and evidence.
- Timely review of case materials to advise clients.
- Timely actions taken on behalf of clients.

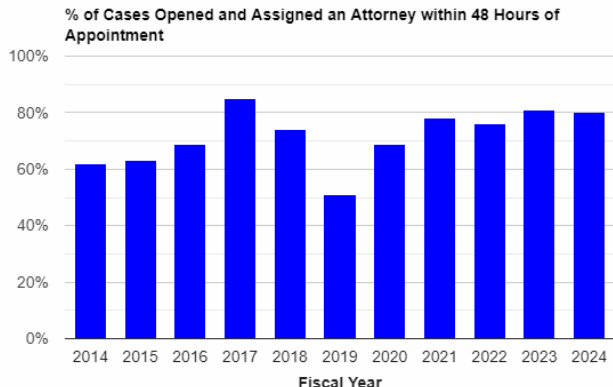
Measures by Core Service

(Additional performance information is available on the web at <https://omb.alaska.gov/results>.)

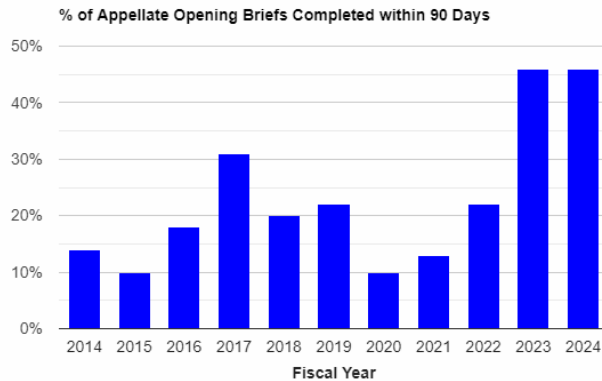
1. Establish timely and effective communications with clients regarding legal rights, the legal process, charges, and evidence.



2. Timely review of case materials to advise clients.



3. Timely actions taken on behalf of clients.



Major Component Accomplishments in 2024

- Reduced the workload of agency attorneys handling cases in the trial courts through increased use of contractors.
- Continued successful reduction to the agency’s vacancy rate for attorney positions in rural locations.
- Filled a dedicated attorney position to focus on training and recruitment of new attorneys.
- Implemented a virtual monthly roundtable for supervising attorneys to improve mid-level management communications, supervision, and training of trial attorneys.

Key Component Challenges

Increased Workloads - The Public Defender Agency (PDA) faces persistently high workloads for attorneys handling the most serious case types because of the backlog of cases created by attrition of the most senior attorneys in the agency and pre-trial delay from the suspension of jury trials and speedy trial rights during the pandemic.

Conflict Reduction – The PDA continues to implement centralized review and oversight of the circumstances where the agency must withdraw from cases as a result of a conflict of interest as defined by the Rules of Professional Conduct. Investigation of additional strategies and procedures that may reduce conflicts of interest are ongoing.

Accurate Appointments – The PDA will continue to identify and challenge unauthorized appointments as they arise. The Agency is occasionally appointed to cases that are not authorized by our enabling statute: where clients can afford counsel, case types that the agency does not handle such as divorce cases, or to co-counsel with a person representing themselves. In these circumstances the agency will motion the court and withdraw from representation as appropriate.

Significant Changes in Results to be Delivered in FY2026

Training - The Public Defender Agency (PDA) Deputy of Training and Development will be implementing practice guides and standards, developing trial team management training, and providing one-on-one coaching to improve litigation practice.

Holistic Defense - The PDA will implement the expansion of the holistic defense model - assisting clients directly with communication and access to services and community resources for parents seeking to reunify their families in Anchorage.

Effective Recruitment & On-boarding - The PDA will continue aggressive recruitment strategies to fill vacant attorney and staff positions and provide appropriate supervision and training to on-board and integrate new

employees quickly and effectively.

Statutory and Regulatory Authority

U.S. Constitution, Amendment VI The Federal Right to Counsel
Alaska Constitution, Article 1, Sec.11 The State Right to Counsel
AS 18.85.010 et seq. The Public Defender Agency Enabling Statute
Alaska Criminal Rule 39 and 39.1
Appellate Rule 209
Financial Eligibility Guidelines for Appointed Counsel

Contact Information
<p>Contact: Terrence Haas, Public Defender Phone: (907) 334-4414 E-mail: terrence.haas@alaska.gov</p>

Public Defender Agency Personal Services Information				
Authorized Positions			Personal Services Costs	
	FY2025 Management Plan	FY2026 Governor		
Full-time	221	222	Annual Salaries	24,541,253
Part-time	1	0	COLA	825,118
Nonpermanent	3	3	Premium Pay	0
			Annual Benefits	14,940,359
			<i>Less 6.71% Vacancy Factor</i>	<i>(2,706,230)</i>
			Lump Sum Premium Pay	0
Totals	225	225	Total Personal Services	37,600,500

Position Classification Summary					
Job Class Title	Anchorage	Fairbanks	Juneau	Others	Total
Accounting Technician 2	1	0	0	0	1
Administrative Assistant 1	1	0	0	0	1
Administrative Assistant 3	1	0	0	0	1
Administrative Officer 1	1	0	0	0	1
Administrative Officer 2	1	0	0	0	1
Attorney 1	8	3	0	10	21
Attorney 2	6	3	0	6	15
Attorney 3	14	6	3	9	32
Attorney 4	23	2	3	8	36
Attorney 5	12	2	2	7	23
Attorney 6	4	0	0	0	4
Investigator 2	1	0	1	1	3
Investigator 3	5	2	0	7	14
Investigator 4	1	0	0	0	1
Law Office Assistant 1	7	2	1	9	19
Law Office Assistant 2	5	3	0	3	11
Law Office Assistant 3	3	0	0	1	4
Paralegal 1	2	1	0	5	8
Paralegal 2	12	0	1	4	17
Paralegal 3	2	1	0	1	4
Paralegal Specialist 1	2	0	0	1	3
Paralegal Specialist 2	1	1	0	0	2
Program Coordinator 1	1	0	0	0	1
Program Manager	1	0	0	0	1
Public Defender	1	0	0	0	1
Totals	116	26	11	72	225

Component Detail All Funds
Department of Administration

Component: Public Defender Agency (1631)
RDU: Legal and Advocacy Services (11)

Non-Formula Component

	FY2024 Actuals	FY2025 Enrolled	FY2025 Authorized	FY2025 Management Plan	FY2026 Governor Adjusted Base	FY2026 Governor	FY2025 Management Plan vs FY2026 Governor		
1000 Personal Services	30,940.7	34,051.1	36,453.0	36,260.7	37,600.5	37,600.5	1,339.8	3.7%	
2000 Travel	837.6	666.7	677.7	700.0	700.0	700.0	0.0	0.0%	
3000 Services	8,916.2	5,250.0	5,977.0	6,147.0	5,534.6	5,534.6	-612.4	-10.0%	
4000 Commodities	379.7	259.2	273.2	273.2	273.2	273.2	0.0	0.0%	
5000 Capital Outlay	0.0	0.0	0.0	0.0	0.0	0.0	0.0	0.0%	
7000 Grants, Benefits	0.0	0.0	0.0	0.0	0.0	0.0	0.0	0.0%	
8000 Miscellaneous	0.0	0.0	0.0	0.0	0.0	0.0	0.0	0.0%	
Totals	41,074.2	40,227.0	43,380.9	43,380.9	44,108.3	44,108.3	727.4	1.7%	
Fund Sources:									
1004 Gen Fund (UGF)	38,094.8	36,975.5	40,053.2	40,053.2	40,720.4	40,720.4	667.2	1.7%	
1005 GF/Prgm (DGF)	431.6	750.4	750.4	750.4	750.4	750.4	0.0	0.0%	
1007 I/A Rcpts (Other)	1,320.5	1,233.0	1,291.5	1,291.5	1,336.4	1,336.4	44.9	3.5%	
1037 GF/MH (UGF)	1,095.4	1,136.2	1,153.9	1,153.9	1,174.7	1,174.7	20.8	1.8%	
1092 MHTAAR (Other)	131.9	131.9	131.9	131.9	126.4	126.4	-5.5	-4.2%	
Unrestricted General (UGF)	39,190.2	38,111.7	41,207.1	41,207.1	41,895.1	41,895.1	688.0	1.7%	
Designated General (DGF)	431.6	750.4	750.4	750.4	750.4	750.4	0.0	0.0%	
Other Funds	1,452.4	1,364.9	1,423.4	1,423.4	1,462.8	1,462.8	39.4	2.8%	
Federal Funds	0.0	0.0	0.0	0.0	0.0	0.0	0.0	0.0%	
Positions:									
Permanent Full Time	216	216	220	221	222	222	1	0.5%	
Permanent Part Time	1	1	1	1	0	0	-1	-100.0%	
Non Permanent	3	3	3	3	3	3	0	0.0%	

Change Record Detail - Multiple Scenarios with Descriptions
Department of Administration

Component: Public Defender Agency (1631)
RDU: Legal and Advocacy Services (11)

Scenario/Change Record Title	Trans Type	Totals	Personal Services	Travel	Services	Commodities	Capital Outlay	Grants, Benefits	Miscellaneous	Positions		NP
										PFT	PPT	
***** Changes From FY2025 Enrolled To FY2025 Authorized *****												
FY2025 Enrolled	Enrolled	40,227.0	34,051.1	666.7	5,250.0	259.2	0.0	0.0	0.0	216	1	3
1004 Gen Fund		36,975.5										
1005 GF/Prgm		750.4										
1007 I/A Rcpts		1,233.0										
1037 GF/MH		1,136.2										
1092 MHTAAR		131.9										
Compensation for Certain State Employees Ch5 SLA2024 (SB259) (Sec2 Ch7 SLA2024 P51 L24 (HB268))												
	FisNot	1,075.1	1,075.1	0.0	0.0	0.0	0.0	0.0	0.0	0	0	0
1004 Gen Fund		1,040.9										
1007 I/A Rcpts		34.2										
Five percent cost of living adjustment for employees not covered by a collective bargaining unit.: \$1,075.1												
Compensation for Certain State Employees Ch5 SLA2024 (SB259) (Sec2 Ch7 SLA2024 P51 L24 (HB268))												
	FisNot	761.9	761.9	0.0	0.0	0.0	0.0	0.0	0.0	0	0	0
1004 Gen Fund		737.6										
1007 I/A Rcpts		24.3										
One salary step adjustment for employees not covered by a collective bargaining agreement.: \$761.9												
Compensation for Certain State Employees Ch5 SLA2024 (SB259) (Sec2 Ch9 SLA2024 P8 L13 (HB270))												
	FisNot	10.4	10.4	0.0	0.0	0.0	0.0	0.0	0.0	0	0	0
1037 GF/MH		10.4										
Five percent cost of living adjustment for employees not covered by a collective bargaining unit.: \$10.4												
Compensation for Certain State Employees Ch5 SLA2024 (SB259) (Sec2 Ch9 SLA2024 P8 L13 (HB270))												
	FisNot	7.3	7.3	0.0	0.0	0.0	0.0	0.0	0.0	0	0	0
1037 GF/MH		7.3										
One salary step adjustment for employees not covered by a collective bargaining agreement.: \$7.3												
Omnibus Criminal Law/Procedure; Civil Commitment Ch11 SLA2024 (HB66) (Sec2 Ch7 SLA2024 P45 L24 (HB268))												
	FisNot	686.8	547.2	11.0	114.6	14.0	0.0	0.0	0.0	4	0	0
1004 Gen Fund		686.8										
This bill incorporates several changes to criminal statutes and procedures previously introduced as independent legislative action and this fiscal note incorporates the combined fiscal impacts on the Agency.												

Change Record Detail - Multiple Scenarios with Descriptions
Department of Administration

Component: Public Defender Agency (1631)
RDU: Legal and Advocacy Services (11)

Scenario/Change Record Title	Trans Type	Totals	Personal Services	Travel	Services	Commodities	Capital Outlay	Grants, Benefits	Miscellaneous	Positions		
										PFT	PPT	NP
<p>This bill establishes a new murder charge where a person manufactures or delivers a controlled substance, and a person dies as a direct result of taking the illegal drugs. The bill allows the presentation of hearsay evidence at grand jury and increases sex offender registry and makes modifications to sex trafficking statutes. Registry requirements are a significant factor in assessing litigation strategies and options for the accused and may increase the number of cases that are brought to trial rather than resolved through plea agreements. This legislation creates a two-year commitment term for individuals determined mentally incompetent to stand trial in felony prosecutions. Additionally, this bill changes replaces the term "child pornography" with "sexual abuse material."</p> <p>The following positions are added to the Public Defender Agency:</p> <p>Full-time Attorney 4 (02#243), range 24, located in Anchorage Full-time Attorney 4 (02#244), range 24, located in Anchorage Full-time Law Office Assistant 2 (02#240), range 13, located in Anchorage Full-time Law Office Assistant 2 (02#241), range 13, located in Palmer</p>												
PDA One-time Case Backlog Contractor Support Sec13(d) Ch7 SLA2024 P89 L03 (HB268) (FY23-FY25)												
1004 Gen Fund	CarryFwd	612.4	0.0	0.0	612.4	0.0	0.0	0.0	0.0	0	0	0
* Sec. 13. DEPARTMENT OF ADMINISTRATION. (d) The sum of \$750,000 is appropriated from the general fund to the Department of Administration, legal and advocacy services, public defender agency, to address case backlogs for the fiscal years ending June 30, 2024, and June 30, 2025.												
PDA Reappropriation for Contractual Caseload Stabilization Sec13(c) Ch7 SLA2024 P89 L07 (HB268)												
	CarryFwd	0.0	0.0	0.0	0.0	0.0	0.0	0.0	0.0	0	0	0
*Sec. 13. DEPARTMENT OF ADMINISTRATION (c) The unexpended and unobligated balance, estimated to be \$800,000, of the appropriation made in sec. 1, ch. 1, FSSLA 2023, page 4, line 8, and allocated on page 4, line 8 (Department of Administration, legal and advocacy services, public defender agency - \$39,945,900), is reappropriated to the Department of Administration, public defender agency, For contractual caseload stabilization to allow the public defender agency to keep pace with case appointments for the fiscal year ending June 30, 2025.												
Subtotal		43,380.9	36,453.0	677.7	5,977.0	273.2	0.0	0.0	0.0	220	1	3
***** Changes From FY2025 Authorized To FY2025 Management Plan *****												
Align Authority for Anticipated Expenditures												
	LIT	0.0	-192.3	22.3	170.0	0.0	0.0	0.0	0.0	0	0	0
Transfer authority from personal services to cover anticipated travel and services costs. The remaining personal services authority is sufficient to cover anticipated expenditures.												
Add Paralegal I/II for Holistic Defense Expansion												
	PosAdj	0.0	0.0	0.0	0.0	0.0	0.0	0.0	0.0	1	0	0

Change Record Detail - Multiple Scenarios with Descriptions
Department of Administration

Component: Public Defender Agency (1631)
RDU: Legal and Advocacy Services (11)

Scenario/Change Record Title	Trans Type	Totals	Personal Services	Travel	Services	Commodities	Capital Outlay	Grants, Benefits	Miscellaneous	Positions		
										PFT	PPT	NP
This is a technical adjustment to bring the position count of the agency in line with the additional position that was funded through the Mental Health Trust Authority in prior budgets.												
The Mental Health Trust Authority granted funding to the Public Defender Agency to add this full time paralegal position. The Public Defender Agency and the Alaska Legal Services Corporation will continue to administer the Holistic Defense model and expand to additional locations where possible.												
Full-time Paralegal I/II (021421), range 14/16, located in Palmer												
Subtotal		43,380.9	36,260.7	700.0	6,147.0	273.2	0.0	0.0	0.0	221	1	3

***** **Changes From FY2025 Management Plan To FY2026 Governor Adjusted Base** *****

Reverse One-Time Case Backlog Contractor Support Sec13(d) Ch7 SLA2024 P89 L03 (HB268) (FY23-FY25)												
1004 Gen Fund	OTI	-612.4	0.0	0.0	-612.4	0.0	0.0	0.0	0.0	0	0	0

* Sec. 13. DEPARTMENT OF ADMINISTRATION.
(d) The sum of \$750,000 is appropriated from the general fund to the Department of Administration, legal and advocacy services, public defender agency, to address case backlogs for the fiscal years ending June 30, 2024, and June 30, 2025.

Reverse MH Trust: Salary Adjustments												
1092 MHTAAR	OTI	-5.5	-5.5	0.0	0.0	0.0	0.0	0.0	0.0	0	0	0

Reverse salary adjustments for positions supported with Mental Health Trust Authority Authorized Receipts (MHTAAR).

Reverse MH Trust: Holistic Defense - Bethel (FY16-FY25)												
1092 MHTAAR	OTI	-126.4	-102.5	-4.7	-15.2	-4.0	0.0	0.0	0.0	0	0	0

The Public Defender Agency and the Alaska Legal Services Corporation will continue to administer the Holistic Defense model. The target population will be Trust beneficiaries not participating in other Therapeutic courts or other diversion projects and will be randomly selected from clients assigned to the public defender.

Project participants' legal needs will be addressed by a criminal attorney. A social worker will continue to assist with participants' unmet social support needs, and a civil legal aid attorney will work with the team to address project participants' civil legal needs. All program services are designed to address participant obstacles to successful reintegration and self-sufficiency; thus, participant recidivism will be reduced resulting in increased public protection and keeping Alaskans safe.

Reverse Reappropriation for Contractual Caseload Stabilization Sec13(c) Ch7 SLA2024 P89 L07 (HB268)												
	OTI	0.0	0.0	0.0	0.0	0.0	0.0	0.0	0.0	0	0	0

*Sec. 13. DEPARTMENT OF ADMINISTRATION
(c) The unexpended and unobligated balance, estimated to be \$800,000, of the appropriation made in sec. 1, ch. 1, FSSLA 2023, page 4, line 8, and allocated on

Change Record Detail - Multiple Scenarios with Descriptions
Department of Administration

Component: Public Defender Agency (1631)
RDU: Legal and Advocacy Services (11)

Scenario/Change Record Title	Trans Type	Totals	Personal Services	Travel	Services	Commodities	Capital Outlay	Grants, Benefits	Miscellaneous	Positions		NP
										PFT	PPT	
page 4, line 8 (Department of Administration, legal and advocacy services, public defender agency - \$39,945,900), is reappropriated to the Department of Administration, public defender agency, For contractual caseload stabilization to allow the public defender agency to keep pace with case appointments for the fiscal year ending June 30, 2025.												
MH Trust: Holistic Defense (FY16-FY27)												
	IncT	126.4	102.5	4.7	15.2	4.0	0.0	0.0	0.0	0	0	0
1092 MHTAAR		126.4										
The Public Defender Agency and the Alaska Legal Services Corporation will continue administering the Holistic Defense model. The target population will be Trust beneficiaries not participating in other Therapeutic courts or other diversion projects, randomly selected from clients assigned to the public defender.												
A criminal attorney will address project participants' criminal legal needs. A social services navigator will continue to assist with participants' unmet social support needs, and a civil legal aid attorney will work with the team to address project participants' civil legal needs. All program services are designed to address participant obstacles to successful reintegration, reducing participant recidivism.												
Change Administrative Officer 2 from Part-Time to Full-Time for Administrative Workload												
	PosAdj	0.0	0.0	0.0	0.0	0.0	0.0	0.0	0.0	1	-1	0
Change part-time Administrative Officer 2 (021281), range 19, located in Anchorage, to full-time to help address increasing Administrative Workloads.												
FY2026 Salary, Health Insurance, and Retirement Increases												
	SalAdj	1,345.3	1,345.3	0.0	0.0	0.0	0.0	0.0	0.0	0	0	0
1004 Gen Fund		1,279.6										
1007 I/A Rcpts		44.9										
1037 GF/MH		20.8										
Salary, health and retirement increases: \$1,345.3												
AlaskaCare increase from \$1908 to \$2030.11 per member per month: \$199.7												
FY2026 APEA (non-law enforcement) 3% cost of living adjustment: \$54.3												
FY2026 3% cost of living adjustment for employees not covered by a collective bargaining agreement: \$717.8												
FY2026 PERS rate adjustment from 26.76% to 28.33%: \$373.5												
Subtotal		44,108.3	37,600.5	700.0	5,534.6	273.2	0.0	0.0	0.0	222	0	3
***** Changes From FY2026 Governor Adjusted Base To FY2026 Governor *****												
Totals		44,108.3	37,600.5	700.0	5,534.6	273.2	0.0	0.0	0.0	222	0	3

Line Item Detail (1676)
Department of Administration
Travel

Component: Public Defender Agency (1631)

Line Number	Line Name		FY2024 Actuals	FY2025 Management Plan	FY2026 Governor
2000	Travel		837.6	700.0	700.0
Object Class	Servicing Agency	Explanation	FY2024 Actuals	FY2025 Management Plan	FY2026 Governor
2000 Travel Detail Totals			837.6	700.0	700.0
2000	In-State Employee Travel	Transportation costs for travel relating to administration, training, conventions and meetings, boards and commissions.	649.1	543.1	548.1
2001	In-State Non-Employee Travel	Transportation costs for travel relating to meetings and boards for non-employees.	63.9	50.0	45.0
2002	Out of State Employee Travel	Transportation costs for staff travel out of state to national organization meetings, conferences, and training.	3.0	16.8	16.8
2003	Out of State Non-Employee Travel	Out of state airfare, surface transportation, lodging and meals and incidentals for expert witnesses and witnesses needed for evaluation, testimony, etc. The PDA has a waiver for all out of state travel expenditures for experts and witnesses.	57.6	39.0	39.0
2005	Moving Costs	Moving and relocation costs.	64.0	51.1	51.1

Line Item Detail (1676)
Department of Administration
Services

Component: Public Defender Agency (1631)

Line Number	Line Name		FY2024 Actuals	FY2025 Management Plan	FY2026 Governor
3000	Services		8,916.2	6,147.0	5,534.6
Object Class	Servicing Agency	Explanation	FY2024 Actuals	FY2025 Management Plan	FY2026 Governor
3000 Services Detail Totals			8,916.2	6,147.0	5,534.6
3000	Education Services	Training, educational conferences, agency memberships, and employee tuition.	87.8	90.0	90.0
3001	Financial Services	Management and consulting services.	0.5	0.0	0.0
3002	Legal and Judicial Services	Contract attorney expenditures related to appellate cases, expert witness fees, transcription services and miscellaneous case costs (medical record requests, etc.). This amount will vary year to year based on open cases, case complexity, court appointments, and attorney availability.	4,622.9	2,000.0	1,398.3
3002	Legal and Judicial Services	Contract attorney costs direct charged to multi-year operating project for one time backlog support.	0.0	0.0	0.0
3003	Information Technology	Software licensing and maintenance, training, and consulting.	225.1	225.0	225.0
3004	Telecommunications	Local, long distance, and cellular telephone charges, television, data/network, telecommunication equipment, and other wireless charges from outside vendors.	141.2	165.0	145.0
3005	Health Services	AmeriCorps Member Program Health Insurance.	26.8	4.0	13.0
3006	Delivery Services	Freight, courier services, and postage.	51.9	35.5	35.5

Line Item Detail (1676)
Department of Administration
Services

Component: Public Defender Agency (1631)

Object Class		Servicing Agency	Explanation	FY2024 Actuals	FY2025 Management Plan	FY2026 Governor
3000 Services Detail Totals				8,916.2	6,147.0	5,534.6
3008	Utilities		Electricity, heating fuel, water, sewage, and disposal services.	101.1	20.0	20.0
3009	Structure/Infrastructure/Land		Structure, infrastructure and land repairs, maintenance, rental, and leases.	307.1	315.0	315.0
3010	Equipment/Machinery		Machinery, furniture and office equipment purchase, repairs, maintenance, rentals, and leases.	0.2	0.0	0.3
3011	Other Services		Interpreter services, print and copy services for case related exhibits and Bethel Jesuit Volunteer placement fee.	64.2	70.0	70.0
3017	Inter-Agency Information Technology Non-Telecommunications	Admin - Licensing, Infrastructure & Serv (3414)	Server hosting fees.	35.4	35.0	35.0
3017	Inter-Agency Information Technology Non-Telecommunications	Admin - Chief Information Officer (3139)	OIT Core Services.	671.0	680.0	680.0
3017	Inter-Agency Information Technology Non-Telecommunications	Admin - Licensing, Infrastructure & Serv (3414)	DOA.OIT Microsoft Allocation for PDA (Employee licenses Count)	0.0	20.0	20.0
3018	Inter-Agency Information Technology Telecommunications	Admin - Licensing, Infrastructure & Serv (3414)	OIT Telecommunications (CISCO device config, deployment, maintenance, replacements, and other telephone line services).	56.4	50.7	50.7
3021	Inter-Agency Mail	Admin - Print Services (2333)	Centralized mail services chargeback.	4.5	5.2	5.2
3022	Inter-Agency Human Resources	Admin - Personnel (56)	Centralized Human Resource chargeback.	131.6	116.0	116.0
3023	Inter-Agency Building Leases	Admin - Facilities Rent Non-State Owned (2778)	FY2024 Lease and rent relief.	-78.5	0.0	0.0
3023	Inter-Agency Building Leases	Trans - Department-wide	Rent for state-owned facilities and lease payments.	1,465.4	1,341.0	1,341.0
3024	Inter-Agency Legal	Courts - Department-wide	Transcript (ACS RSA) expenditures.	196.0	150.0	150.0

Line Item Detail (1676)
Department of Administration
Services

Component: Public Defender Agency (1631)

Object Class		Servicing Agency	Explanation	FY2024 Actuals	FY2025 Management Plan	FY2026 Governor
3000 Services Detail Totals				8,916.2	6,147.0	5,534.6
3026	Inter-Agency Insurance	Admin - Risk Management (71)	Risk Management chargeback.	9.6	9.0	9.0
3027	Inter-Agency Financial	Admin - Accounting (3134)	SSOA Accounts Payable and Travel chargeback.	47.8	35.4	35.4
3027	Inter-Agency Financial	Admin - Finance (59)	Division of Finance chargeback for IRIS FIN, HRM, and ALDER.	89.8	10.0	10.0
3028	Inter-Agency Americans with Disabilities Act Compliance	Admin - Personnel (56)	Americans with Disabilities Act (ADA) chargeback.	2.9	1.8	1.8
3029	Inter-Agency Education/Training	Admin - OFC of Procure. Property. Mngmt. (3291)	Internal department cost allocation chargeback, desktop support, procurement services.	0.2	0.0	0.0
3037	State Equipment Fleet	Trans - Department-wide	State equipment fleet chargeback for vehicle lease, maintenance, and fuel.	2.5	0.0	0.0
3037	State Equipment Fleet	Trans - Department-wide	FY2024 Vehicle purchases.	190.8	0.0	0.0
3038	Inter-Agency Management/Consulting	Admin - Administrative Services (46)	Administrative chargeback.	212.0	470.5	470.5
3038	Inter-Agency Management/Consulting	Admin - OFC of Procure. Property. Mngmt. (3291)	SSoA Procurement chargeback.	20.7	27.1	27.1
3038	Inter-Agency Management/Consulting	Admin - Office of the Commissioner (45)	Office of the Commissioner chargeback.	229.3	270.8	270.8

Line Item Detail (1676)
Department of Administration
Commodities

Component: Public Defender Agency (1631)

Line Number	Line Name		FY2024 Actuals	FY2025 Management Plan	FY2026 Governor
4000	Commodities		379.7	273.2	273.2
Object Class	Servicing Agency	Explanation	FY2024 Actuals	FY2025 Management Plan	FY2026 Governor
4000 Commodities Detail Totals			379.7	273.2	273.2
4000	Business	General business supplies such as office consumables, furniture, and computer equipment.	373.1	258.1	258.1
4002	Household/Institutional	Cleaning, food and other household supplies.	5.9	6.3	6.3
4004	Safety	Safety supplies, including fire suppression, personal protection gear.	0.7	1.0	1.0
4020	Equipment Fuel	Fuel and gasoline.	0.0	7.8	7.8

Revenue Detail (1681)
Department of Administration

Component: Public Defender Agency (1631)

Revenue Type (OMB Fund Code) Revenue Source	Component	Comment	FY2024 Actuals	FY2025 Management Plan	FY2026 Governor
5005 GF/Prgm (1005 GF/Prgm)			431.6	750.4	750.4
5102 Program Receipts Public Protection - Fines and Forfeitures		Rule 39 general fund program receipts.	431.6	750.4	750.4
5007 I/A Rcpts (1007 I/A Rcpts)			1,320.5	1,291.5	1,336.4
5301 Inter-Agency Receipts	Commerce - Department-wide	AmeriCorps (CED) Serve Alaska _ Data analysis project reimbursable service agreement.	126.0	184.0	215.2
5301 Inter-Agency Receipts	Courts - Department-wide	Therapeutic Court reimbursable services agreement.	813.2	736.2	736.2
5301 Inter-Agency Receipts	FCS - Department-wide	Title IV-E reimbursable service agreement.	381.3	371.3	385.0

Inter-Agency Services (1682)
Department of Administration

Component: Public Defender Agency (1631)

				FY2024 Actuals	FY2025 Management Plan	FY2026 Governor
Component Totals				3,287.4	3,222.5	3,222.5
With Department of Administration				1,432.7	1,731.5	1,731.5
With Department of Transportation and Public Facilities				1,658.7	1,341.0	1,341.0
With Judiciary				196.0	150.0	150.0
Object Class	Servicing Agency	Explanation		FY2024 Actuals	FY2025 Management Plan	FY2026 Governor
3017	Inter-Agency Information Technology Non-Telecommunications	Admin - Licensing, Infrastructure & Serv (3414)	Server hosting fees.	35.4	35.0	35.0
3017	Inter-Agency Information Technology Non-Telecommunications	Admin - Chief Information Officer (3139)	OIT Core Services.	671.0	680.0	680.0
3017	Inter-Agency Information Technology Non-Telecommunications	Admin - Licensing, Infrastructure & Serv (3414)	DOA.OIT Microsoft Allocation for PDA (Employee licenses Count)	0.0	20.0	20.0
3018	Inter-Agency Information Technology Telecommunications	Admin - Licensing, Infrastructure & Serv (3414)	OIT Telecommunications (CISCO device config, deployment, maintenance, replacements, and other telephone line services).	56.4	50.7	50.7
3021	Inter-Agency Mail	Admin - Print Services (2333)	Centralized mail services chargeback.	4.5	5.2	5.2
3022	Inter-Agency Human Resources	Admin - Personnel (56)	Centralized Human Resource chargeback.	131.6	116.0	116.0
3023	Inter-Agency Building Leases	Admin - Facilities Rent Non-State Owned (2778)	FY2024 Lease and rent relief.	-78.5	0.0	0.0
3023	Inter-Agency Building Leases	Trans - Department-wide	Rent for state-owned facilities and lease payments.	1,465.4	1,341.0	1,341.0
3024	Inter-Agency Legal	Courts - Department-wide	Transcript (ACS RSA) expenditures.	196.0	150.0	150.0
3026	Inter-Agency Insurance	Admin - Risk Management (71)	Risk Management chargeback.	9.6	9.0	9.0
3027	Inter-Agency Financial	Admin - Accounting (3134)	SSOA Accounts Payable and Travel chargeback.	47.8	35.4	35.4
3027	Inter-Agency Financial	Admin - Finance (59)	Division of Finance chargeback for IRIS FIN, HRM, and ALDER.	89.8	10.0	10.0
3028	Inter-Agency Americans with	Admin - Personnel (56)	Americans with Disabilities Act	2.9	1.8	1.8

Inter-Agency Services (1682)
Department of Administration

Component: Public Defender Agency (1631)

Object Class	Servicing Agency	Explanation	FY2024 Actuals	FY2025 Management Plan	FY2026 Governor	
	Disabilities Act Compliance	(ADA) chargeback.				
3029	Inter-Agency Education/Training	Admin - OFC of Procure. Property. Mngmt. (3291)	Internal department cost allocation chargeback, desktop support, procurement services.	0.2	0.0	0.0
3037	State Equipment Fleet	Trans - Department-wide	State equipment fleet chargeback for vehicle lease, maintenance, and fuel.	2.5	0.0	0.0
3037	State Equipment Fleet	Trans - Department-wide	FY2024 Vehicle purchases.	190.8	0.0	0.0
3038	Inter-Agency Management/Consulting	Admin - Administrative Services (46)	Administrative chargeback.	212.0	470.5	470.5
3038	Inter-Agency Management/Consulting	Admin - OFC of Procure. Property. Mngmt. (3291)	SSoA Procurement chargeback.	20.7	27.1	27.1
3038	Inter-Agency Management/Consulting	Admin - Office of the Commissioner (45)	Office of the Commissioner chargeback.	229.3	270.8	270.8

Personal Services Expenditure Detail
Department of Administration

Scenario: FY2026 Governor (22363)
Component: Public Defender Agency (1631)
RDU: Legal and Advocacy Services (11)

PCN	Job Class Title	Time Status	Retire Code	Barg Unit	Location	Salary Sched	Range / Step	Comp Months	Split / Count	Annual Salaries	COLA	Premium Pay	Annual Benefits	Total Costs	UGF Amount
021101	Law Office Assistant 3	FT	A	GP	Dillingham	237	14K	12.0		91,494	0	0	56,309	147,803	147,803
021102	Law Office Assistant 2	FT	A	GP	Palmer	200	13B / C	12.0		50,466	0	0	39,610	90,076	90,076
021103	Investigator 3	FT	A	GP	Anchorage	200	18C / D	12.0		73,610	0	0	49,030	122,640	122,640
021104	Law Office Assistant 2	FT	A	GP	Anchorage	200	13B / C	12.0		50,466	0	0	39,610	90,076	90,076
021106	Attorney 1	FT	A	XE	Palmer	A00	18E	12.0		90,012	3,799	0	61,009	154,820	154,820
021108	Investigator 3	FT	A	GP	Palmer	200	18B / C	12.0		71,110	0	0	48,012	119,122	119,122
021109	Attorney 4	FT	A	XE	Anchorage	A00	24F / J	12.0		144,086	6,082	0	83,017	233,185	233,185
021117	Attorney 5	FT	A	XE	Kotzebue	A60	25J / K	12.0		251,553	10,155	0	122,057	383,765	383,765
021118	Attorney 4	FT	A	XE	Palmer	A00	24D / E	12.0		131,227	5,539	0	77,783	214,549	214,549
021119	Investigator 2	FT	A	GP	Juneau	205	16E / F	12.0		70,638	0	0	47,820	118,458	118,458
021120	Paralegal 3	FT	A	SS	Fairbanks	603	17K	12.0		84,802	3,579	0	59,032	147,413	147,413
021121	Attorney 3	FT	A	XE	Anchorage	A00	22F / J	12.0		123,881	5,229	0	74,793	203,903	203,903
021122	Attorney 1	FT	A	XE	Anchorage	A00	18E	12.0		90,012	3,799	0	61,009	154,820	154,820
021123	Attorney 5	FT	A	XE	Palmer	A00	25E / F	12.0		149,732	6,320	0	85,315	241,367	241,367
021124	Attorney 5	FT	A	XE	Bethel	A50	25K / L	12.0		243,033	9,811	0	119,112	371,956	371,956
021127	Investigator 3	FT	A	GP	Dillingham	237	18D / E	12.0		104,270	0	0	61,509	165,779	165,779
021128	Attorney 3	FT	A	XE	Anchorage	A00	22E / F	12.0		118,326	4,995	0	72,533	195,854	195,854
021129	Investigator 3	FT	A	GP	Bethel	250	18A / B	12.0		103,250	0	0	61,093	164,343	164,343
021130	Attorney 4	FT	A	XE	Anchorage	A00	24F	12.0		139,542	5,890	0	81,168	226,600	130,676
021133	Attorney 4	FT	A	XE	Anchorage	A00	24J / K	12.0		144,866	6,115	0	83,334	234,315	234,315
021134	Attorney 5	FT	A	XE	Anchorage	A00	25F	12.0		149,955	6,330	0	85,406	241,691	241,691
021135	Paralegal 2	FT	A	GP	Juneau	205	16D / E	12.0		69,456	0	0	47,339	116,795	116,795
021201	Public Defender	FT	A	XE	Anchorage	A00	27S / T	12.0		225,999	9,124	0	113,223	348,346	209,008
021202	Administrative Assistant 3	FT	A	GP	Anchorage	200	15A / B	12.0		55,748	0	0	41,760	97,508	97,508
021203	Law Office Assistant 1	FT	A	GP	Bethel	250	11A / B	12.0		64,701	0	0	45,404	110,105	110,105
021204	Law Office Assistant 1	FT	A	GP	Ketchikan	200	11C / D	12.0		44,921	0	0	37,353	82,274	82,274
021205	Law Office Assistant 2	FT	A	GP	Anchorage	200	13E / F	12.0		54,785	0	0	41,368	96,153	96,153
021206	Attorney 5	FT	A	XE	Fairbanks	A03	25N	12.0		181,233	7,317	0	97,748	286,298	286,298
021207	Attorney 3	FT	A	XE	Juneau	A05	22F	12.0		127,920	5,400	0	76,437	209,757	209,757
021208	Attorney 3	FT	A	XE	Ketchikan	A00	22F / J	12.0		124,706	5,264	0	75,129	205,099	205,099
021209	Attorney 5	FT	A	XE	Fairbanks	A03	25J / K	12.0		160,465	6,773	0	89,683	256,921	131,030
021210	Attorney 5	FT	A	XE	Anchorage	A00	25N / O	12.0		181,091	7,311	0	97,698	286,100	286,100
021211	Attorney 5	FT	A	XE	Anchorage	A00	25R	12.0		199,973	8,073	0	104,226	312,272	312,272
021212	Investigator 2	FT	A	GP	Anchorage	200	16A / B	12.0		60,138	0	0	43,547	103,685	103,685
021213	Paralegal 2	FT	A	GP	Anchorage	200	16D / E	12.0		65,895	0	0	45,890	111,785	111,785
021214	Law Office Assistant 2	FT	A	GP	Anchorage	200	13E / F	12.0		54,666	0	0	41,320	95,986	95,986
021215	Law Office Assistant 3	FT	A	SS	Anchorage	600	14J / K	12.0		66,836	2,821	0	51,720	121,377	121,377
021216	Attorney 4	FT	A	XE	Fairbanks	A03	24F	12.0		143,735	6,067	0	82,874	232,676	232,676

Note: If a position is split, an asterisk (*) will appear in the Split/Count column. If the split position is also counted in the component, two asterisks (**) will appear in this column. [No valid job title] appearing in the Job Class Title indicates that the PCN has an invalid class code or invalid range for the class code effective date of this scenario.

Personal Services Expenditure Detail
Department of Administration

Scenario: FY2026 Governor (22363)
Component: Public Defender Agency (1631)
RDU: Legal and Advocacy Services (11)

PCN	Job Class Title	Time Status	Retire Code	Barg Unit	Location	Salary Sched	Range / Step	Comp Months	Split / Count	Annual Salaries	COLA	Premium Pay	Annual Benefits	Total Costs	UGF Amount
021217	Investigator 2	FT	A	GP	Ketchikan	200	16B / C	12.0		60,235	0	0	43,586	103,821	103,821
021218	Attorney 2	FT	A	XE	Palmer	A00	20D / F	12.0		106,685	4,503	0	67,795	178,983	178,983
021219	Investigator 3	FT	A	GP	Fairbanks	203	18G	12.0		84,221	0	0	53,349	137,570	137,570
021220	Attorney 6	FT	A	XE	Anchorage	A00	26J / K	12.0		165,420	6,982	0	91,700	264,102	264,102
021221	Attorney 5	FT	A	XE	Anchorage	A00	25M / N	12.0		174,149	7,077	0	95,253	276,479	276,479
021222	Attorney 5	FT	A	XE	Anchorage	A00	25R / S	12.0		204,734	8,265	0	105,872	318,871	318,871
021223	Attorney 3	FT	A	XE	Kenai	A00	22F	12.0		121,836	5,143	0	73,961	200,940	200,940
021224	Attorney 4	FT	A	XE	Anchorage	A00	24F	12.0		139,542	5,890	0	81,168	226,600	226,600
021225	Attorney 5	FT	A	XE	Anchorage	A00	25M / N	12.0		175,487	7,085	0	95,761	278,333	278,333
021226	Attorney 6	FT	A	XE	Anchorage	A00	26L	12.0		170,976	7,143	0	93,961	272,080	272,080
021227	Law Office Assistant 1	FT	A	GP	Fairbanks	203	11E / F	12.0		49,039	0	0	39,030	88,069	88,069
021228	Law Office Assistant 1	FT	A	GP	Nome	237	11A / B	12.0		59,085	0	0	43,118	102,203	102,203
021229	Law Office Assistant 2	FT	A	GP	Kenai	200	13G / J	12.0		58,073	0	0	42,706	100,779	100,779
021230	Attorney 5	FT	A	XE	Anchorage	A00	25A	12.0		125,892	5,314	0	75,612	206,818	206,818
021231	Attorney 2	FT	A	XE	Anchorage	A00	20D / E	12.0		102,611	4,331	0	66,137	173,079	173,079
021232	Accounting Technician 2	FT	A	GP	Anchorage	200	14C / D	12.0		54,683	0	0	41,327	96,010	96,010
021234	Attorney 4	FT	A	XE	Anchorage	A00	24F	12.0		139,542	5,890	0	81,168	226,600	226,600
021235	Attorney 4	FT	A	XE	Juneau	A05	24S / T	12.0		204,477	8,255	0	105,783	318,515	318,515
021236	Attorney 5	FT	A	XE	Anchorage	A00	25T	12.0		219,473	8,860	0	110,967	339,300	339,300
021238	Attorney 4	FT	A	XE	Kodiak	A11	24E / F	12.0		151,424	6,392	0	86,003	243,819	243,819
021239	Attorney 1	FT	A	XE	Fairbanks	A03	18E / F	12.0		95,897	4,048	0	63,404	163,349	163,349
021240	Attorney 3	FT	A	XE	Fairbanks	A03	22F	12.0		125,483	5,297	0	75,446	206,226	206,226
021242	Attorney 3	FT	A	XE	Juneau	A05	22E / F	12.0		127,920	5,400	0	76,437	209,757	209,757
021243	Attorney 1	FT	A	XE	Anchorage	A00	18E	12.0		90,012	3,799	0	61,009	154,820	154,820
021244	Law Office Assistant 1	FT	A	GP	Palmer	200	11A / B	12.0		42,459	0	0	36,351	78,810	78,810
021245	Paralegal 1	FT	A	GP	Bethel	250	14A	12.0		75,699	0	0	49,880	125,579	125,579
021246	Attorney 3	FT	A	XE	Bethel	A50	22E / F	12.0		182,491	7,367	0	98,182	288,040	288,040
021247	Attorney 5	FT	A	XE	Juneau	A05	25U	12.0		231,563	9,348	0	115,147	356,058	356,058
021248	Attorney 3	FT	A	XE	Kenai	A00	22F / J	12.0		125,366	5,292	0	75,398	206,056	206,056
021249	Attorney 4	FT	A	XE	Anchorage	A00	24F / J	12.0		142,382	6,010	0	82,323	230,715	154,233
021250	Paralegal 2	FT	A	GP	Anchorage	200	16A / B	12.0		58,875	0	0	43,033	101,908	101,908
021251	Attorney 5	FT	A	XE	Kenai	A00	25L / M	12.0		167,729	7,080	0	92,640	267,449	267,449
021253	Attorney 4	FT	A	XE	Nome	A37	24B / C	12.0		171,181	7,139	0	94,045	272,365	272,365
021254	Paralegal 2	FT	A	SS	Anchorage	600	16D / E	12.0		71,263	3,008	0	53,522	127,793	127,793
021255	Law Office Assistant 1	FT	A	GP	Kotzebue	260	11A	12.0		67,080	0	0	46,372	113,452	113,452
021256	Attorney 5	FT	A	XE	Anchorage	A00	25M	12.0		170,411	7,155	0	93,731	271,297	271,297
021258	Paralegal 1	FT	A	GP	Utqiagvik	250	14K / L	12.0		102,079	0	0	60,617	162,696	162,696
021259	Law Office Assistant 2	FT	A	GP	Fairbanks	203	13E / F	12.0		56,757	0	0	42,171	98,928	98,928

Note: If a position is split, an asterisk (*) will appear in the Split/Count column. If the split position is also counted in the component, two asterisks (**) will appear in this column. [No valid job title] appearing in the Job Class Title indicates that the PCN has an invalid class code or invalid range for the class code effective date of this scenario.

Personal Services Expenditure Detail
Department of Administration

Scenario: FY2026 Governor (22363)
Component: Public Defender Agency (1631)
RDU: Legal and Advocacy Services (11)

PCN	Job Class Title	Time Status	Retire Code	Barg Unit	Location	Salary Sched	Range / Step	Comp Months	Split / Count	Annual Salaries	COLA	Premium Pay	Annual Benefits	Total Costs	UGF Amount
021260	Attorney 3	FT	A	XE	Fairbanks	A03	22D / E	12.0		120,425	5,083	0	73,387	198,895	198,895
021261	Attorney 1	FT	A	XE	Fairbanks	A03	18E	12.0		92,703	3,913	0	62,104	158,720	158,720
021262	Attorney 4	FT	A	XE	Juneau	A05	24F / J	12.0		148,426	6,265	0	84,783	239,474	122,132
021263	Attorney 3	FT	A	XE	Anchorage	A00	22E / F	12.0		118,326	4,995	0	72,533	195,854	195,854
021264	Attorney 4	FT	A	XE	Anchorage	A00	24D / E	12.0		132,706	5,602	0	78,385	216,693	216,693
021265	Attorney 3	FT	A	XE	Juneau	A05	22D / E	12.0		119,665	5,051	0	73,078	197,794	197,794
021266	Attorney 4	FT	A	XE	Palmer	A00	24E / F	12.0		136,994	5,783	0	80,130	222,907	222,907
021267	Attorney 2	FT	A	XE	Fairbanks	A03	20D / E	12.0		104,522	4,412	0	66,914	175,848	175,848
021268	Investigator 3	FT	A	GP	Nome	237	18G	12.0		112,008	0	0	64,658	176,666	176,666
021269	Attorney 5	FT	A	XE	Juneau	A05	25J	12.0		162,572	6,862	0	90,541	259,975	259,975
021270	Attorney 4	FT	A	XE	Palmer	A00	24Q	12.0		182,871	7,383	0	98,314	288,568	288,568
021271	Paralegal 3	FT	A	SS	Anchorage	600	17D / E	12.0		74,779	3,156	0	54,953	132,888	132,888
021272	Attorney 1	FT	A	XE	Anchorage	A00	18E / F	12.0		93,044	3,927	0	62,243	159,214	159,214
021273	Law Office Assistant 1	FT	A	GP	Kodiak	211	11A / B	12.0		47,873	0	0	38,555	86,428	86,428
021274	Law Office Assistant 1	FT	A	GP	Anchorage	200	11C / D	12.0		44,794	0	0	37,302	82,096	82,096
021275	Investigator 3	FT	A	GP	Anchorage	200	18C / D	12.0		72,517	0	0	48,585	121,102	121,102
021276	Attorney 3	FT	A	XE	Fairbanks	A03	22D	12.0		117,351	4,953	0	72,136	194,440	99,164
021277	Attorney 4	FT	A	XE	Anchorage	A00	24C / D	12.0		127,795	5,394	0	76,386	209,575	209,575
021278	Attorney 6	FT	A	XE	Anchorage	A00	26Q / R	12.0		203,621	8,220	0	105,487	317,328	317,328
021279	Attorney 1	FT	A	XE	Anchorage	A00	18E	12.0		90,012	3,799	0	61,009	154,820	154,820
021280	Attorney 3	FT	A	XE	Anchorage	A00	22D / E	12.0		117,317	4,952	0	72,122	194,391	194,391
021281	Administrative Officer 2	FT	A	SS	Anchorage	200	19J / K	12.0		92,398	3,900	0	62,124	158,422	158,422
021282	Attorney 4	FT	A	XE	Anchorage	A00	24D / E	12.0		133,428	5,632	0	78,679	217,739	217,739
021283	Paralegal 1	FT	A	GP	Sitka	205	14P	12.0		82,310	0	0	52,571	134,881	134,881
021284	Attorney 3	FT	A	XE	Palmer	A00	22E / F	12.0		119,484	5,043	0	73,004	197,531	197,531
021286	Paralegal Specialist 2	FT	A	SS	Fairbanks	203	20L / M	12.0		109,629	4,627	0	69,137	183,393	0
021287	Investigator 3	FT	A	SS	Bethel	250	18T / U	12.0		180,647	7,293	0	97,689	285,629	285,629
021288	Investigator 3	FT	A	GP	Fairbanks	203	18B / C	12.0		71,808	0	0	48,297	120,105	120,105
021289	Paralegal 2	FT	A	GP	Anchorage	200	16B / C	12.0		60,363	0	0	43,638	104,001	104,001
021290	Attorney 3	FT	A	XE	Anchorage	A00	22F / J	12.0		125,069	5,279	0	75,277	205,625	205,625
021291	Attorney 4	FT	A	XE	Anchorage	A00	24D / E	12.0		131,732	5,560	0	77,989	215,281	215,281
021292	Attorney 3	FT	A	XE	Palmer	A00	22F	12.0		121,836	5,143	0	73,961	200,940	200,940
021293	Attorney 5	FT	A	XE	Palmer	A00	25R / S	12.0		200,460	8,093	0	104,394	312,947	312,947
021296	Attorney 2	FT	A	XE	Kenai	A00	20E / F	12.0		106,685	4,503	0	67,795	178,983	178,983
021297	Law Office Assistant 3	FT	A	SS	Anchorage	600	14J / K	12.0		66,836	2,821	0	51,720	121,377	121,377
021298	Attorney 6	FT	A	XE	Anchorage	A00	26T	12.0		213,876	8,634	0	109,032	331,542	331,542
021299	Attorney 1	FT	A	XE	Kenai	A00	18E	12.0		90,012	3,799	0	61,009	154,820	154,820
021300	Attorney 1	FT	A	XE	Kotzebue	A60	18E / F	12.0		149,187	6,297	0	85,093	240,577	240,577

Note: If a position is split, an asterisk (*) will appear in the Split/Count column. If the split position is also counted in the component, two asterisks (**) will appear in this column. [No valid job title] appearing in the Job Class Title indicates that the PCN has an invalid class code or invalid range for the class code effective date of this scenario.

Personal Services Expenditure Detail
Department of Administration

Scenario: FY2026 Governor (22363)
Component: Public Defender Agency (1631)
RDU: Legal and Advocacy Services (11)

PCN	Job Class Title	Time Status	Retire Code	Barg Unit	Location	Salary Sched	Range / Step	Comp Months	Split / Count	Annual Salaries	COLA	Premium Pay	Annual Benefits	Total Costs	UGF Amount
021305	Paralegal 2	FT	A	GP	Palmer	200	16C / D	12.0		63,102	0	0	44,753	107,855	107,855
021320	Law Office Assistant 1	FT	A	GP	Palmer	200	11R / S	12.0		68,083	0	0	46,780	114,863	114,863
021321	Law Office Assistant 1	FT	A	GP	Anchorage	200	11A / B	12.0		42,278	0	0	36,278	78,556	78,556
021322	Attorney 3	FT	A	XE	Fairbanks	A03	22E	12.0		121,154	5,114	0	73,684	199,952	199,952
021323	Attorney 3	FT	A	XE	Anchorage	A00	22D / E	12.0		115,966	4,895	0	71,572	192,433	192,433
021324	Attorney 2	FT	A	XE	Anchorage	A00	20E / F	12.0		105,283	4,444	0	67,224	176,951	176,951
021325	Attorney 1	FT	A	XE	Fairbanks	A03	18E / F	12.0		95,572	4,034	0	63,272	162,878	162,878
021326	Attorney 4	FT	A	XE	Anchorage	A00	24K	12.0		148,766	6,279	0	84,922	239,967	239,967
021327	Attorney 3	FT	A	XE	Anchorage	A00	22F / J	12.0		124,772	5,267	0	75,156	205,195	205,195
021328	Attorney 3	FT	A	XE	Kenai	A00	22F / J	12.0		121,968	5,148	0	74,015	201,131	201,131
021329	Attorney 4	FT	A	XE	Anchorage	A00	24F	12.0		139,542	5,890	0	81,168	226,600	226,600
021330	Investigator 3	FT	A	GP	Anchorage	200	18B / C	12.0		69,167	0	0	47,222	116,389	116,389
021331	Attorney 3	FT	A	XE	Anchorage	A00	22D / E	12.0		116,764	4,929	0	71,897	193,590	193,590
021332	Attorney 1	FT	A	XE	Palmer	A00	18E / F	12.0		93,330	3,939	0	62,359	159,628	159,628
021333	Attorney 4	FT	A	XE	Bethel	A50	24C	12.0		188,838	7,624	0	100,377	296,839	296,839
021334	Attorney 1	FT	A	XE	Anchorage	A00	18E	12.0		90,012	3,799	0	61,009	154,820	154,820
021335	Attorney 5	FT	A	XE	Dillingham	A37	25N / O	12.0		244,643	9,876	0	119,668	374,187	374,187
021336	Attorney 5	FT	A	XE	Anchorage	A00	25E	12.0		144,593	6,103	0	83,223	233,919	119,299
021338	Law Office Assistant 1	FT	A	GP	Anchorage	200	11B / C	12.0		43,620	0	0	36,824	80,444	80,444
021339	Attorney 4	FT	A	XE	Anchorage	A00	24J / K	12.0		147,908	6,243	0	84,572	238,723	238,723
021341	Law Office Assistant 2	FT	A	GP	Kenai	200	13J	12.0		60,372	0	0	43,642	104,014	104,014
021342	Attorney 5	FT	A	XE	Anchorage	A00	25R	12.0		203,892	8,231	0	105,581	317,704	317,704
021343	Attorney 4	FT	A	XE	Anchorage	A00	24K	12.0		148,766	6,279	0	84,922	239,967	239,967
021344	Attorney 4	FT	A	XE	Anchorage	A00	24N	12.0		163,742	6,912	0	91,017	261,671	261,671
021345	Paralegal 2	FT	A	GP	Anchorage	200	16B / C	12.0		61,055	0	0	43,920	104,975	104,975
021346	Attorney 2	FT	A	XE	Ketchikan	A00	20E / F	12.0		104,168	4,397	0	66,770	175,335	175,335
021347	Paralegal 3	FT	A	GP	Anchorage	200	17G / J	12.0		77,225	0	0	50,501	127,726	127,726
021348	Attorney 2	FT	A	XE	Dillingham	A37	20E / F	12.0		143,627	6,062	0	82,830	232,519	232,519
021349	Attorney 2	FT	A	XE	Fairbanks	A03	20D / E	12.0		105,168	4,439	0	67,177	176,784	176,784
021350	Attorney 1	FT	A	XE	Kenai	A00	18E	12.0		90,012	3,799	0	61,009	154,820	154,820
021351	Attorney 1	FT	A	XE	Palmer	A00	18E / F	12.0		92,986	3,925	0	62,219	159,130	159,130
021352	Law Office Assistant 2	FT	A	GP	Anchorage	200	13B / C	12.0		48,879	0	0	38,964	87,843	87,843
021354	Paralegal 2	FT	A	GP	Anchorage	200	16B / C	12.0		61,216	0	0	43,986	105,202	105,202
021355	Attorney 2	FT	A	XE	Anchorage	A00	20E / F	12.0		103,436	4,366	0	66,472	174,274	174,274
021357	Law Office Assistant 2	FT	A	GP	Anchorage	200	13C / D	12.0		50,824	0	0	39,756	90,580	90,580
021358	Attorney 4	FT	A	XE	Anchorage	A00	24E / F	12.0		137,451	5,802	0	80,316	223,569	114,020
021359	Attorney 1	FT	A	XE	Kenai	A00	18E	12.0		90,012	3,799	0	61,009	154,820	154,820
021360	Attorney 4	FT	A	XE	Anchorage	A00	24J / K	12.0		145,256	6,131	0	83,493	234,880	234,880

Note: If a position is split, an asterisk (*) will appear in the Split/Count column. If the split position is also counted in the component, two asterisks (**) will appear in this column. [No valid job title] appearing in the Job Class Title indicates that the PCN has an invalid class code or invalid range for the class code effective date of this scenario.

Personal Services Expenditure Detail
Department of Administration

Scenario: FY2026 Governor (22363)
Component: Public Defender Agency (1631)
RDU: Legal and Advocacy Services (11)

PCN	Job Class Title	Time Status	Retire Code	Barg Unit	Location	Salary Sched	Range / Step	Comp Months	Split / Count	Annual Salaries	COLA	Premium Pay	Annual Benefits	Total Costs	UGF Amount
021361	Attorney 1	FT	A	XE	Bethel	A50	18E	12.0		135,018	5,699	0	79,326	220,043	220,043
021362	Investigator 3	FT	A	GP	Anchorage	200	18J / K	12.0		85,252	0	0	53,768	139,020	139,020
021363	Attorney 1	FT	A	XE	Anchorage	A00	18E / F	12.0		92,786	3,916	0	62,138	158,840	158,840
021364	Administrative Officer 1	FT	A	SS	Anchorage	200	17C / D	12.0		73,088	3,085	0	54,265	130,438	130,438
021365	Paralegal 1	FT	A	GP	Fairbanks	203	14C / D	12.0		55,958	0	0	41,846	97,804	97,804
021366	Paralegal 2	FT	A	GP	Kenai	200	16E / F	12.0		67,633	0	0	46,597	114,230	114,230
021367	Paralegal 2	FT	A	GP	Anchorage	200	16K / L	12.0		79,092	0	0	51,261	130,353	130,353
021370	Paralegal 2	FT	A	GP	Palmer	200	16G / J	12.0		72,391	0	0	48,534	120,925	120,925
021371	Paralegal 2	FT	A	GP	Anchorage	200	16B / C	12.0		61,795	0	0	44,221	106,016	106,016
021372	Investigator 3	FT	A	GP	Kenai	200	18L	12.0		90,773	0	0	56,015	146,788	146,788
021373	Paralegal Specialist 1	FT	A	GP	Bethel	250	19A / B	12.0		108,065	0	0	63,053	171,118	171,118
021374	Paralegal Specialist 2	FT	A	SS	Anchorage	200	20D / E	12.0		92,037	3,885	0	61,977	157,899	157,899
021375	Attorney 2	FT	A	XE	Anchorage	A00	20E / F	12.0		103,500	4,369	0	66,498	174,367	174,367
021376	Attorney 3	FT	A	XE	Anchorage	A00	22D	12.0		113,939	4,809	0	70,747	189,495	189,495
021377	Attorney 4	FT	A	XE	Anchorage	A00	24M / N	12.0		162,884	6,875	0	90,668	260,427	260,427
021378	Program Manager	FT	A	SS	Anchorage	200	22N	12.0		127,733	5,392	0	76,505	209,630	209,630
021379	Paralegal Specialist 1	FT	A	SS	Anchorage	200	19B / C	12.0		81,162	3,426	0	57,551	142,139	142,139
021380	Attorney 1	FT	A	XE	Kodiak	A11	18F	12.0		103,721	4,378	0	66,588	174,687	174,687
021381	Attorney 3	FT	A	XE	Anchorage	A00	22E / F	12.0		121,415	5,125	0	73,790	200,330	200,330
021382	Attorney 1	FT	A	XE	Bethel	A50	18C	12.0		126,633	5,345	0	75,914	207,892	207,892
021383	Attorney 3	FT	A	XE	Fairbanks	A03	22E	12.0		121,154	5,114	0	73,684	199,952	199,952
021384	Attorney 2	FT	A	XE	Anchorage	A00	20A	12.0		90,012	3,799	0	61,009	154,820	154,820
021385	Attorney 4	FT	A	XE	Anchorage	A00	24E / F	12.0		135,587	5,723	0	79,558	220,868	220,868
021386	Attorney 4	FT	A	XE	Anchorage	A00	24J / K	12.0		146,582	6,187	0	84,033	236,802	236,802
021388	Attorney 4	FT	A	XE	Juneau	A05	24E / F	12.0		145,284	6,132	0	83,505	234,921	234,921
021389	Attorney 3	FT	A	XE	Fairbanks	A03	22E / F	12.0		122,560	5,173	0	74,256	201,989	201,989
021390	Law Office Assistant 2	FT	A	GP	Fairbanks	203	13C / D	12.0		53,640	0	0	40,902	94,542	94,542
021391	Law Office Assistant 1	FT	A	GP	Juneau	205	11A / B	12.0		45,045	0	0	37,404	82,449	82,449
021392	Law Office Assistant 3	FT	A	SS	Anchorage	600	14E	12.0		62,837	2,652	0	50,093	115,582	115,582
021393	Paralegal 1	FT	A	GP	Anchorage	200	14B / C	12.0		52,433	0	0	40,411	92,844	92,844
021394	Paralegal 1	FT	A	GP	Nome	237	14A / B	12.0		71,175	0	0	48,039	119,214	119,214
021395	Paralegal 2	FT	A	GP	Anchorage	200	16B / C	12.0		61,200	0	0	43,979	105,179	105,179
021396	Paralegal Specialist 1	FT	A	GP	Anchorage	200	19F / G	12.0		86,590	0	0	54,313	140,903	140,903
021397	Attorney 4	FT	A	XE	Anchorage	A00	24E / F	12.0		136,120	5,746	0	79,775	221,641	221,641
021398	Law Office Assistant 1	FT	A	GP	Anchorage	200	11B / C	12.0		43,852	0	0	36,918	80,770	80,770
021399	Attorney 3	FT	A	XE	Palmer	A00	22F	12.0		121,836	5,143	0	73,961	200,940	200,940
021400	Paralegal 1	FT	A	GP	Anchorage	200	14A / B	12.0		52,182	0	0	40,309	92,491	92,491
021401	Paralegal 2	FT	A	GP	Anchorage	200	16B / C	12.0		60,685	0	0	43,769	104,454	0

Note: If a position is split, an asterisk (*) will appear in the Split/Count column. If the split position is also counted in the component, two asterisks (**) will appear in this column. [No valid job title] appearing in the Job Class Title indicates that the PCN has an invalid class code or invalid range for the class code effective date of this scenario.

Personal Services Expenditure Detail
Department of Administration

Scenario: FY2026 Governor (22363)
Component: Public Defender Agency (1631)
RDU: Legal and Advocacy Services (11)

PCN	Job Class Title	Time Status	Retire Code	Barg Unit	Location	Salary Sched	Range / Step	Comp Months	Split / Count	Annual Salaries	COLA	Premium Pay	Annual Benefits	Total Costs	UGF Amount
021402	Attorney 3	FT	A	XE	Anchorage	A00	22E / F	12.0		118,677	5,009	0	72,675	196,361	196,361
021403	Attorney 4	FT	A	XE	Fairbanks	A03	24F	12.0		143,735	6,067	0	82,874	232,676	232,676
021404	Attorney 4	FT	A	XE	Kenai	A00	24F / J	12.0		139,731	5,898	0	81,244	226,873	226,873
021405	Attorney 3	FT	A	XE	Ketchikan	A00	22E / F	12.0		118,186	4,989	0	72,476	195,651	195,651
021406	Attorney 3	FT	A	XE	Anchorage	A00	22E / F	12.0		120,432	5,083	0	73,390	198,905	198,905
021407	Attorney 3	FT	A	XE	Anchorage	A00	22C / D	12.0		110,524	4,665	0	69,357	184,546	184,546
021408	Attorney 4	FT	A	XE	Sitka	A05	24F / J	12.0		146,959	6,203	0	84,186	237,348	237,348
021409	Attorney 5	FT	A	XE	Palmer	A00	25O	12.0		181,662	7,334	0	97,896	286,892	286,892
021410	Investigator 3	FT	A	GP	Anchorage	200	18B / C	12.0		70,654	0	0	47,827	118,481	118,481
021411	Law Office Assistant 1	FT	A	GP	Anchorage	200	11C / D	12.0		45,417	0	0	37,555	82,972	82,972
021412	Paralegal 3	FT	A	SS	Ketchikan	600	17J	12.0		79,726	3,365	0	56,966	140,057	140,057
021413	Law Office Assistant 1	FT	A	GP	Bethel	250	11C / D	12.0		66,819	0	0	46,266	113,085	113,085
021414	Attorney 3	FT	A	XE	Anchorage	A00	22F / J	12.0		123,090	5,196	0	74,472	202,758	202,758
021415	Paralegal 2	FT	A	SS	Palmer	600	16E	12.0		72,176	3,047	0	53,894	129,117	129,117
021416	Law Office Assistant 1	FT	A	GP	Fairbanks	203	11A / B	12.0		44,421	0	0	37,150	81,571	81,571
021417	Paralegal 2	FT	A	SS	Anchorage	600	16B / C	12.0		66,976	2,827	0	51,777	121,580	121,580
021418	Program Coordinator 1	FT	A	GP	Anchorage	200	18A / B	12.0		69,088	0	0	47,189	116,277	116,277
021419	Administrative Assistant 1	FT	A	GP	Anchorage	200	12B / C	12.0		46,927	0	0	38,170	85,097	85,097
021421	Paralegal 1	FT	A	GP	Palmer	200	14B / C	12.0		53,838	0	0	40,983	94,821	94,821
021422	Attorney 5	FT	A	XE	Anchorage	A00	25F / J	12.0		150,889	6,369	0	85,786	243,044	243,044
021423	Attorney 4	FT	A	XE	Anchorage	A00	24C	12.0		125,892	5,314	0	75,612	206,818	206,818
021424	Attorney 1	FT	A	XE	Anchorage	A00	18E	12.0		90,012	3,799	0	61,009	154,820	154,820
021563	Law Office Assistant 1	FT	A	GG	Anchorage	200	11A / B	12.0		43,134	0	0	36,626	79,760	79,760
021564	Law Office Assistant 1	FT	A	GG	Palmer	200	11A	12.0		41,925	0	0	36,134	78,059	78,059
021786	Attorney 4	FT	A	XE	Anchorage	A00	24J	12.0		144,086	6,082	0	83,017	233,185	233,185
021790	Attorney 2	FT	A	XE	Kotzebue	A60	20D	12.0		159,744	6,743	0	89,390	255,877	255,877
021791	Attorney 2	FT	A	XE	Anchorage	A00	20E / F	12.0		104,551	4,413	0	66,926	175,890	175,890
021792	Attorney 2	FT	A	XE	Fairbanks	A03	20D	12.0		102,843	4,341	0	66,231	173,415	173,415
021793	Attorney 2	FT	A	XE	Bethel	A50	20E / F	12.0		159,702	6,741	0	89,373	255,816	255,816
021794	Investigator 4	FT	A	SS	Anchorage	200	20N	12.0		111,862	4,722	0	70,046	186,630	186,630
021795	Paralegal 2	FT	A	GP	Anchorage	200	16C / D	12.0		62,556	0	0	44,531	107,087	107,087
021796	Investigator 3	FT	A	GP	Palmer	200	18G	12.0		81,764	0	0	52,349	134,113	134,113
02N07035	Law Office Assistant 1	NP	N	GP	Anchorage	200	11A	3.0		7,985	0	0	803	8,788	8,788
02N07043	Law Office Assistant 2	NP	N	GP	Fairbanks	203	13A	0.5		1,250	0	0	126	1,376	1,376
02TPX002	Attorney 1	NP	N	XE	Anchorage	A00	18E	12.0		90,012	2,972	0	9,055	102,039	102,039

Note: If a position is split, an asterisk (*) will appear in the Split/Count column. If the split position is also counted in the component, two asterisks (**) will appear in this column. [No valid job title] appearing in the Job Class Title indicates that the PCN has an invalid class code or invalid range for the class code effective date of this scenario.

Personal Services Expenditure Detail
Department of Administration

Scenario: FY2026 Governor (22363)
Component: Public Defender Agency (1631)
RDU: Legal and Advocacy Services (11)

PCN	Job Class Title	Time Status	Retire Code	Barg Unit	Location	Salary Sched	Range / Step	Comp Months	Split / Count	Annual Salaries	COLA	Premium Pay	Annual Benefits	Total Costs	UGF Amount
		Total Positions	New	Deleted										Total Salary Costs:	24,541,253
														Total COLA:	825,118
	Full Time Positions:	222	0	0										Total Premium Pay:	0
	Part Time Positions:	0	0	0										Total Benefits:	14,940,359
	Non Permanent Positions:	3	0	0											
	Positions in Component:	225	0	0											
	Total Component Months:	2,679.5													
														Total Pre-Vacancy:	40,306,730
														Minus Vacancy Adjustment of 6.71%:	(2,706,230)
														Total Post-Vacancy:	37,600,500
														Plus Lump Sum Premium Pay:	0
														Personal Services Line 100:	37,600,500

PCN Funding Sources:	Pre-Vacancy	Post-Vacancy	Percent
1004 Unrestricted General Fund Receipts	38,141,934	35,581,050	94.63%
1007 Interagency Receipts	1,224,055	1,141,871	3.04%
1037 General Fund / Mental Health	940,741	877,579	2.33%
Total PCN Funding:	40,306,730	37,600,500	100.00%

Note: If a position is split, an asterisk (*) will appear in the Split/Count column. If the split position is also counted in the component, two asterisks (**) will appear in this column. [No valid job title] appearing in the Job Class Title indicates that the PCN has an invalid class code or invalid range for the class code effective date of this scenario.

021201
 Public Defender
 R27 PFT
 Anchorage PX

CRIMINAL

APPEALS &
 PCRs

TRAINING &
 DEVELOPMENT

CIVIL

OPERATIONS

021226
 Attorney 6
 R26 PFT
 Anchorage PX

021123
 Attorney 5
 R25 PFT
 Palmer PX

021134
 Attorney 5
 R25 PFT
 Anchorage PX

021293
 Attorney 5
 R25 PFT
 Palmer PX

021422
 Attorney 5
 R25 PFT
 Anchorage PX

021409
 Attorney 5
 R25 PFT
 Palmer PX

021210
 Attorney 5
 R25 PFT
 Anchorage PX

021251
 Attorney 5
 R25 PFT
 Kenai PX

021342
 Attorney 5
 R25 PFT
 Anchorage PX

021206
 Attorney 5
 R25 PFT
 Fairbanks PX

021222
 Attorney 5
 R25 PFT
 Anchorage PX

021209
 Attorney 5
 R25 PFT
 Fairbanks PX

021225
 Attorney 5
 R25 PFT
 Anchorage PX

021117
 Attorney 5
 R25 PFT
 Kotzebue PX

021269
 Attorney 5
 R25 PFT
 Juneau PX

021335
 Attorney 5
 R25 PFT
 Dillingham PX

021238
 Attorney 4
 R18/20/22/24 PFT
 Kodiak PX

021278
 Attorney 6
 R26 PFT
 Anchorage PX

021211
 Attorney 5
 R25 PFT
 Anchorage PX

021247
 Attorney 5
 R25 PFT
 Juneau PX

021221
 Attorney 5
 R25 PFT
 Anchorage PX

021343
 Attorney 1|2|3|4
 R18/20/22/24 PFT
 Anchorage PX

021344
 Attorney 1|2|3|4
 R18/20/22/24 PFT
 Anchorage PX

021242
 Attorney 1|2|3|4
 R18/20/22/24 PFT
 Juneau PX

021133
 Attorney 1|2|3|4
 R18/20/22/24 PFT
 Anchorage PX

021381
 Attorney 1|2|3|4
 R18/20/22/24 PFT
 Anchorage PX

021360
 Attorney 1|2|3|4
 R18/20/22/24 PFT
 Anchorage PX

021277
 Attorney 1|2|3|4
 R18/20/22/24 PFT
 Anchorage PX

021264
 Attorney 1|2|3|4
 R18/20/22/24 PFT
 Anchorage PX

021377
 Attorney 1|2|3|4
 R18/20/22/24 PFT
 Anchorage PX

021786
 Attorney 1|2|3|4
 R18/20/22/24 PFT
 Anchorage PX

021271
 Paralegal 3
 R17 PFT
 Anchorage CL

021109
 Attorney 1|2|3|4
 R18/20/22/24 PFT
 Anchorage PX

021220
 Attorney 6
 R26 PFT
 Anchorage PX

021250
 Paralegal 1/2
 R14/16 PFT
 Anchorage CL

021298
 Attorney 6
 R26 PFT
 Anchorage PX

021236
 Attorney 5
 R25 PFT
 Anchorage PX

021256
 Attorney 5
 R25 PFT
 Anchorage PX

021230
 Attorney 5
 R25 PFT
 Anchorage PX

021417
 Paralegal 1/2
 R14/16 PFT
 Anchorage CL

021401
 Paralegal 1/2
 R14/16 PFT
 Anchorage CL

021354
 Paralegal 1/2
 R14/16 PFT
 Anchorage CL

021214
 Law Office Assist 1/2
 R11/13 PFT
 Anchorage CL

021378
 Program Manager
 R22 PFT
 Anchorage CL

021286
 Paralegal Spec. 2
 R20 PFT
 Fairbanks CL

021374
 Paralegal Spec. 2
 R20 PFT
 Anchorage CL

021794
 Investigator 4
 R20 PFT
 Anchorage CL

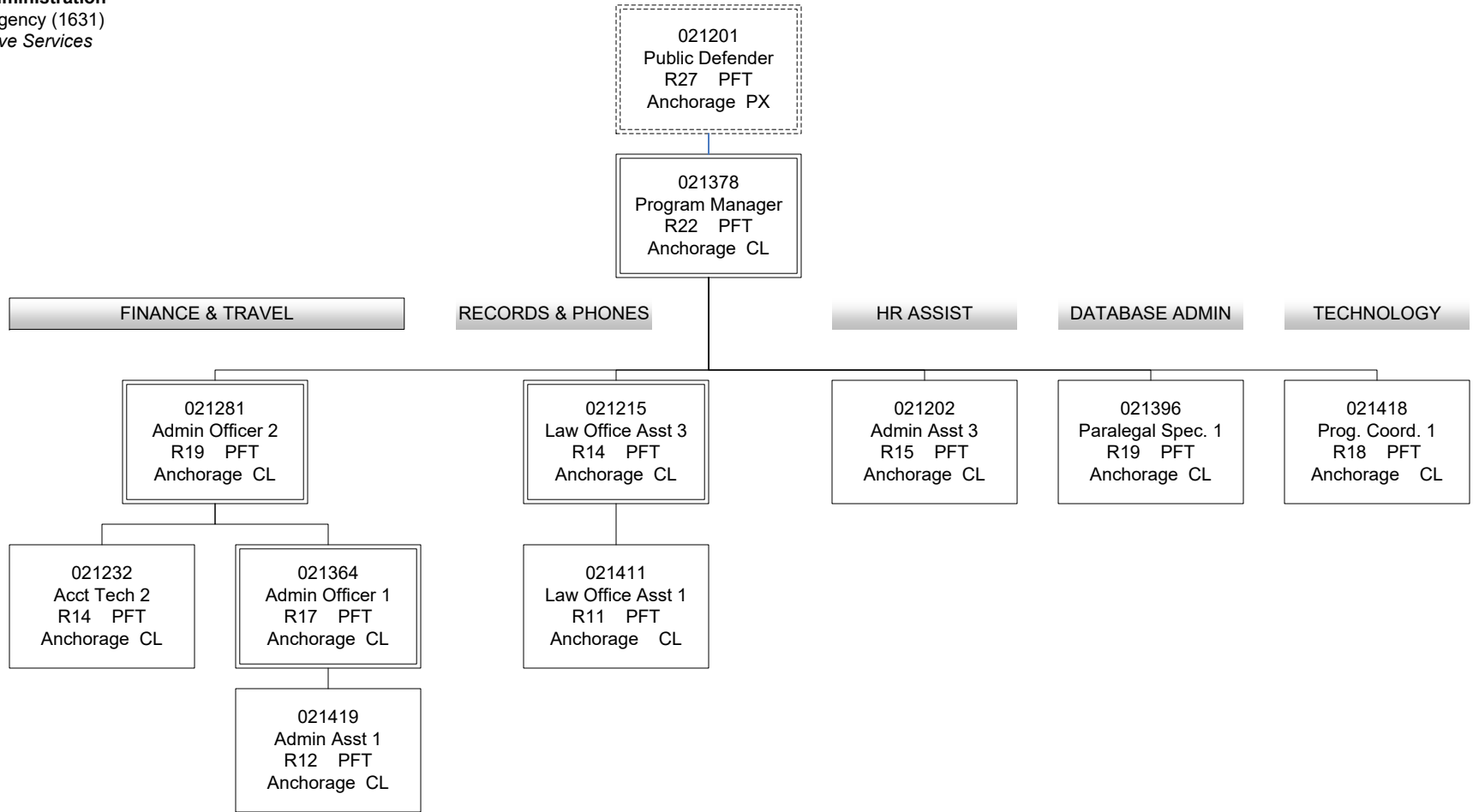
021281
 Admin Officer 2
 R19 PFT
 Anchorage CL

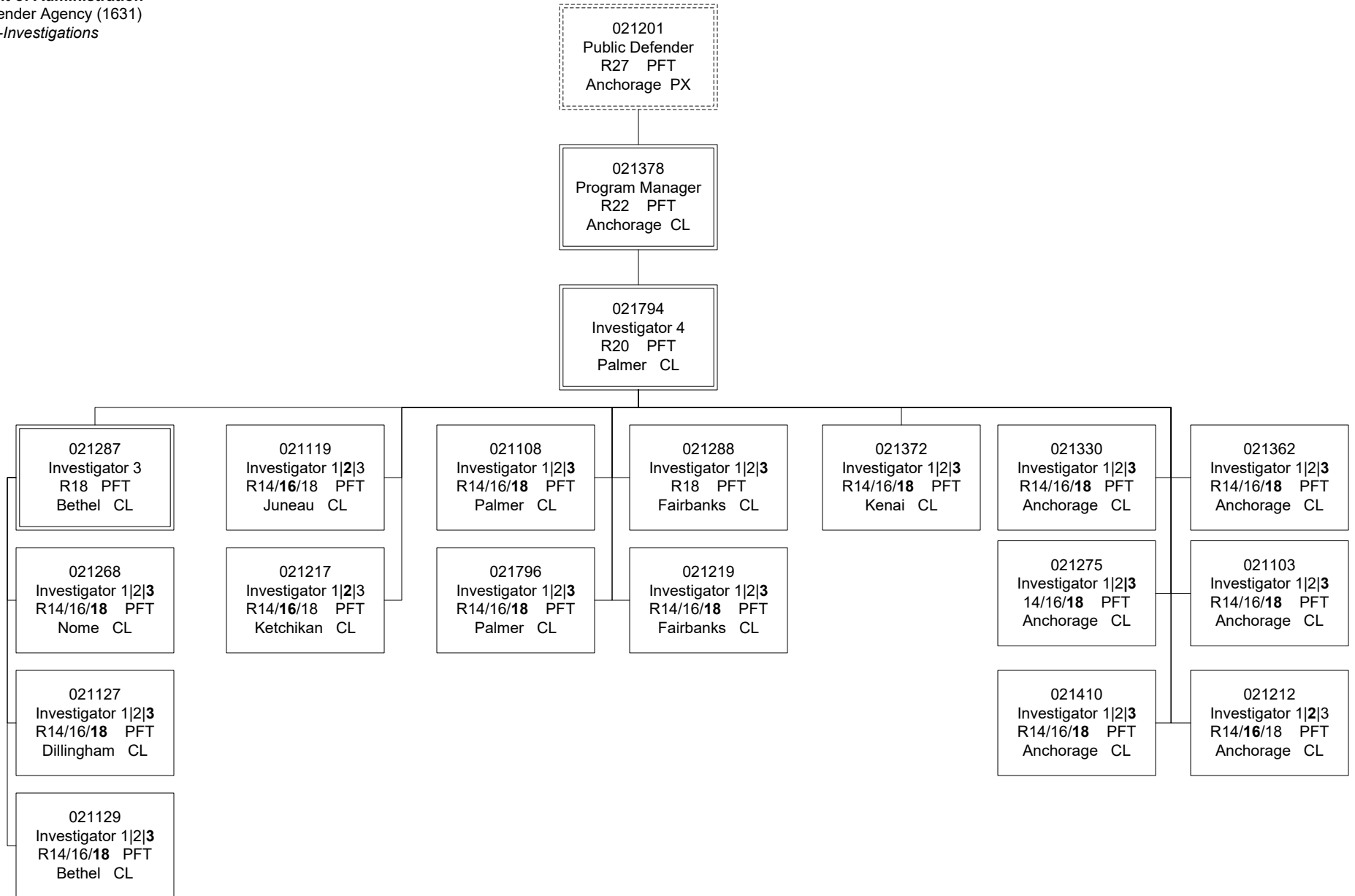
021396
 Paralegal Spec. 1
 R19 PFT
 Anchorage CL

021418
 Prog. Coord. 1
 R18 PFT
 Anchorage CL

021202
 Admin Asst 3
 R15 PFT
 Anchorage CL

021215
 Law Office Assist 3
 R14 PFT
 Anchorage CL





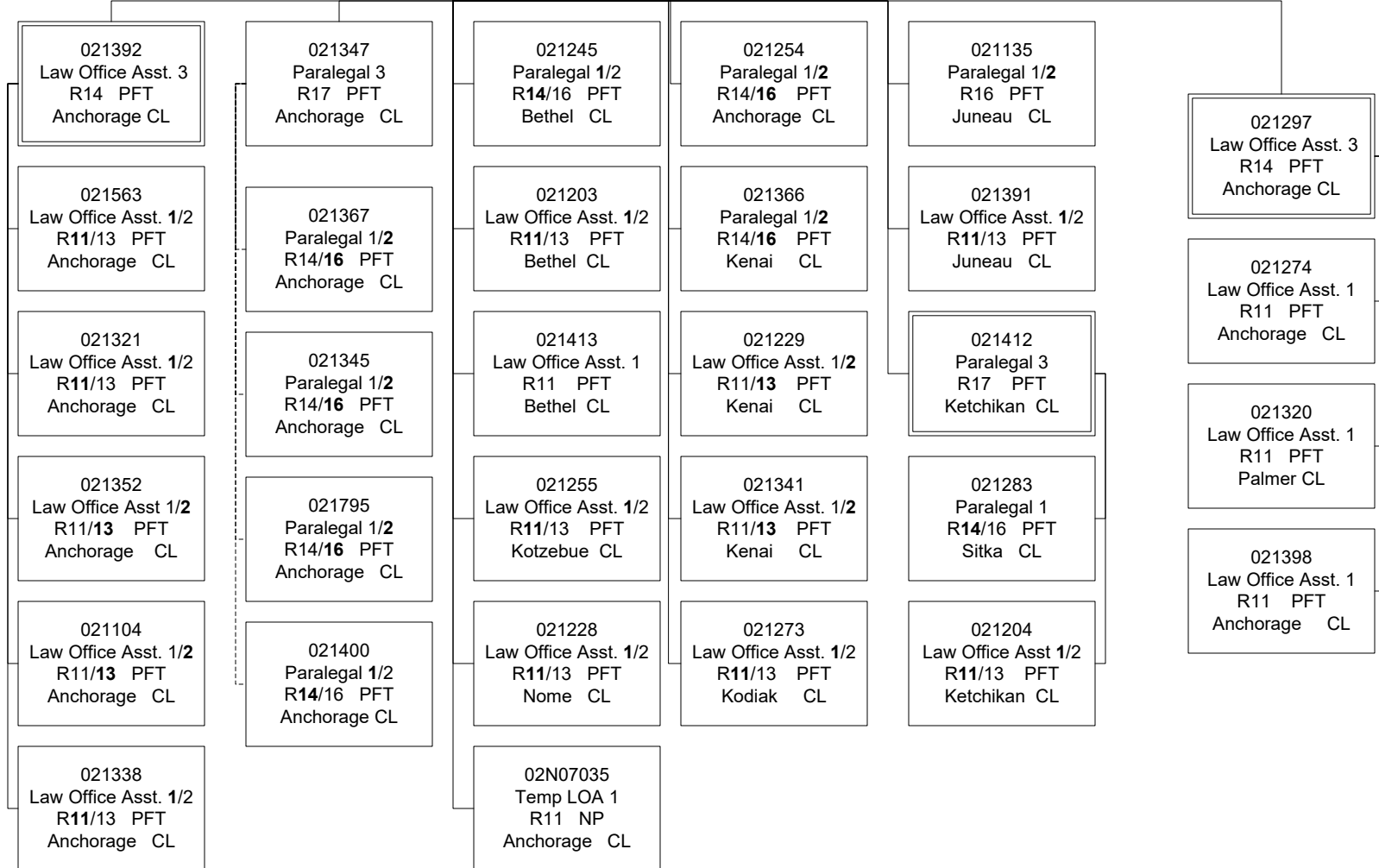
021201
 Public Defender
 R27 PFT
 Anchorage PX

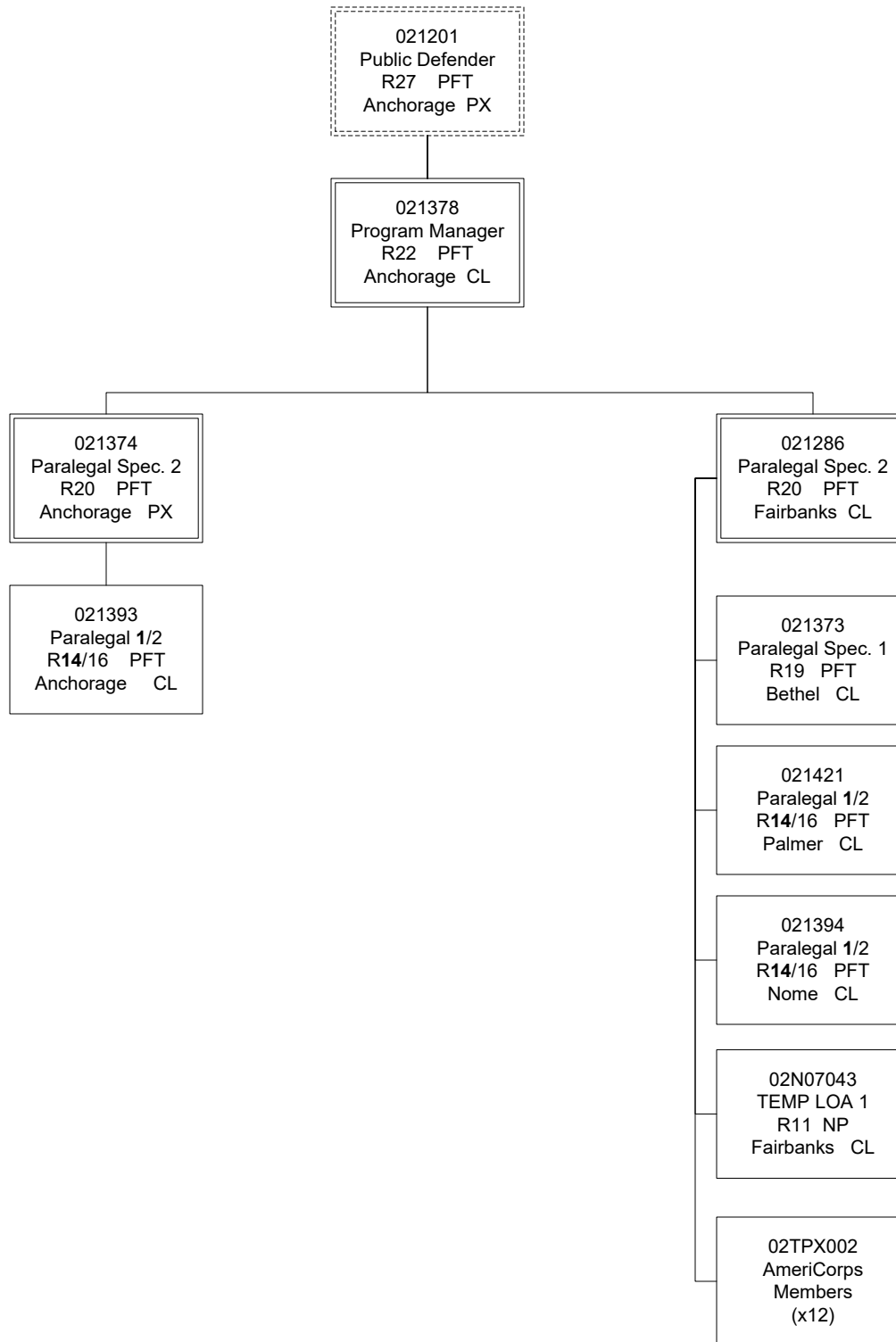
021378
 Program Manager
 R22 PFT
 Anchorage CL

TRIAL SUPPORT

INTAKE

021374
 Paralegal Spec. 2
 R20 PFT
 Anchorage PX





021201
 Public Defender
 R27 PFT
 Anchorage PX

021298
 Attorney 6
 R26 PFT
 Anchorage PX

FAMILY DEFENSE

MENTAL HEALTH

SUPPORT STAFF

021236
 Attorney 5
 R25 PFT
 Anchorage PX

021256
 Attorney 5
 R25 PFT
 Anchorage PX

021256
 Attorney 5
 R25 PFT
 Anchorage PX

021354
 Paralegal 1/2
 R14/16 PFT
 Anchorage CL

021417
 Paralegal 1/2
 R14/16 PFT
 Anchorage CL

021384
 Attorney 1|2|3|4
 R18/20/22/24 PFT
 Anchorage PX

021262
 Attorney 1|2|3|4
 R18/20/22/24 PFT
 Juneau PX

021334
 Attorney 1|2|3|4
 R18/20/22/24 PFT
 Anchorage PX

021322
 Attorney 1|2|3|4
 R18/20/22/24 PFT
 Fairbanks PX

021279
 Attorney 1|2|3|4
 R18/20/22/24 PFT
 Anchorage PX

021401
 Paralegal 1/2
 R14/16 PFT
 Anchorage CL

021357
 Law Office Asst. 1/2
 R11/13 PFT
 Anchorage CL

021375
 Attorney 1|2|3|4
 R18/20/22/24 PFT
 Anchorage PX

021270
 Attorney 1|2|3|4
 R18/20/22/24 PFT
 Palmer PX

021282
 Attorney 1|2|3|4
 R18/20/22/24 PFT
 Anchorage PX

021792
 Attorney 1|2|3|4
 R18/20/22/24 PFT
 Fairbanks PX

021424
 Attorney 1|2|3|4
 R18/20/22/24 PFT
 Anchorage PX

021214
 Law Office Asst. 1/2
 R11/13 PFT
 Anchorage CL

021326
 Attorney 1|2|3|4
 R18/20/22/24 PFT
 Anchorage PX

021218
 Attorney 1|2|3|4
 R18/20/22/24 PFT
 Palmer PX

021339
 Attorney 1|2|3|4
 R18/20/22/24 PFT
 Anchorage PX

021350
 Attorney 1|2|3|4
 R18/20/22/24 PFT
 Kenai PX

021363
 Attorney 1|2|3|4
 R18/20/22/24 PFT
 Anchorage PX

