

**Department of Administration**

Personnel (56)  
RDU: Centralized Admin Services (13)  
FY2026 Governor's Budget  
Position Totals: 76 PFT  
Director's Office

022001  
Division Director  
R27-Juneau-PX

Administrative Support

187654  
HR Consultant 4  
R20-Juneau-CL

124205  
Business Analyst 2  
R20-Juneau-CL

041018  
Admin Ops  
Manager 1  
R22-Juneau-CL

022015  
Admin Assistant 3  
R15-Juneau-CL

060531  
HR Consultant 5  
R22-Anchorage-CL

Classification  
See attached sheets

022100  
HR Consultant 6  
R24-Anchorage-CL

022122  
HR Consultant 5  
R22-Anchorage-CL

Learning &  
Development  
See attached sheets

201024  
HR Consultant 5  
R22-Anchorage-CL

Equal Employment  
Opportunity See  
attached sheets

187053  
HR Consultant 4  
R20-Anchorage-CL

Workforce Services  
See attached sheets

022108  
HR Consultant 6  
R24-Juneau-CL

Director's Office Human  
Resource Support Team

022096  
HR Consultant 5  
R22-Juneau-CL

029008  
HR Consultant 1  
R16-Juneau-CL

250059  
HR Consultant 5  
R22-Anchorage-CL

Employee Relations  
See attached sheets

Employee  
Planning &  
Information  
Center

110222  
HR Consultant 2  
R18-Juneau-CL

071219  
HR Consultant 1  
R16-Juneau-CL

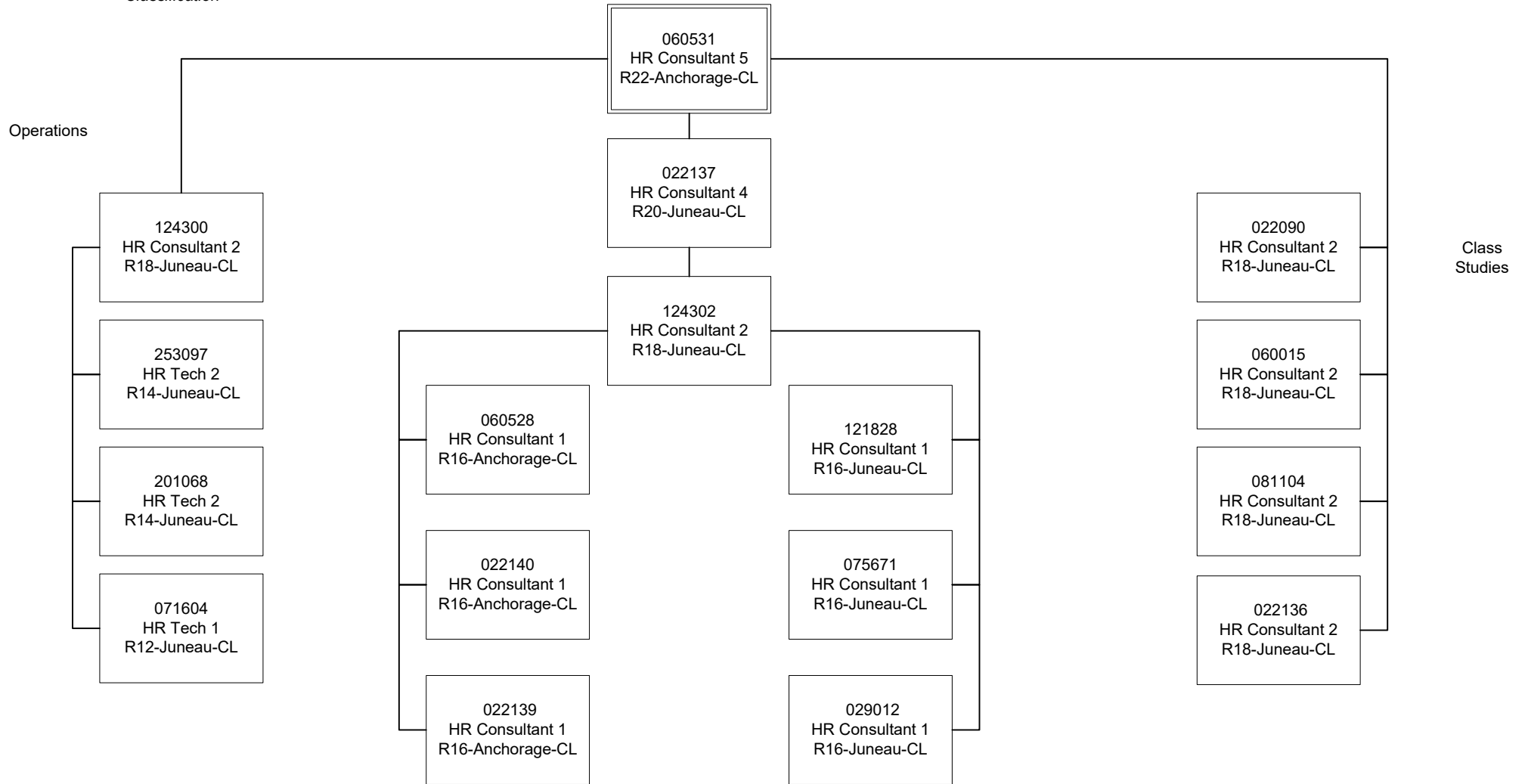
022013  
Office Asst 1  
R8-Juneau-CL

060453  
HR Tech 1  
R12-Juneau-CL

022118  
Office Asst 1  
R8-Juneau-CL

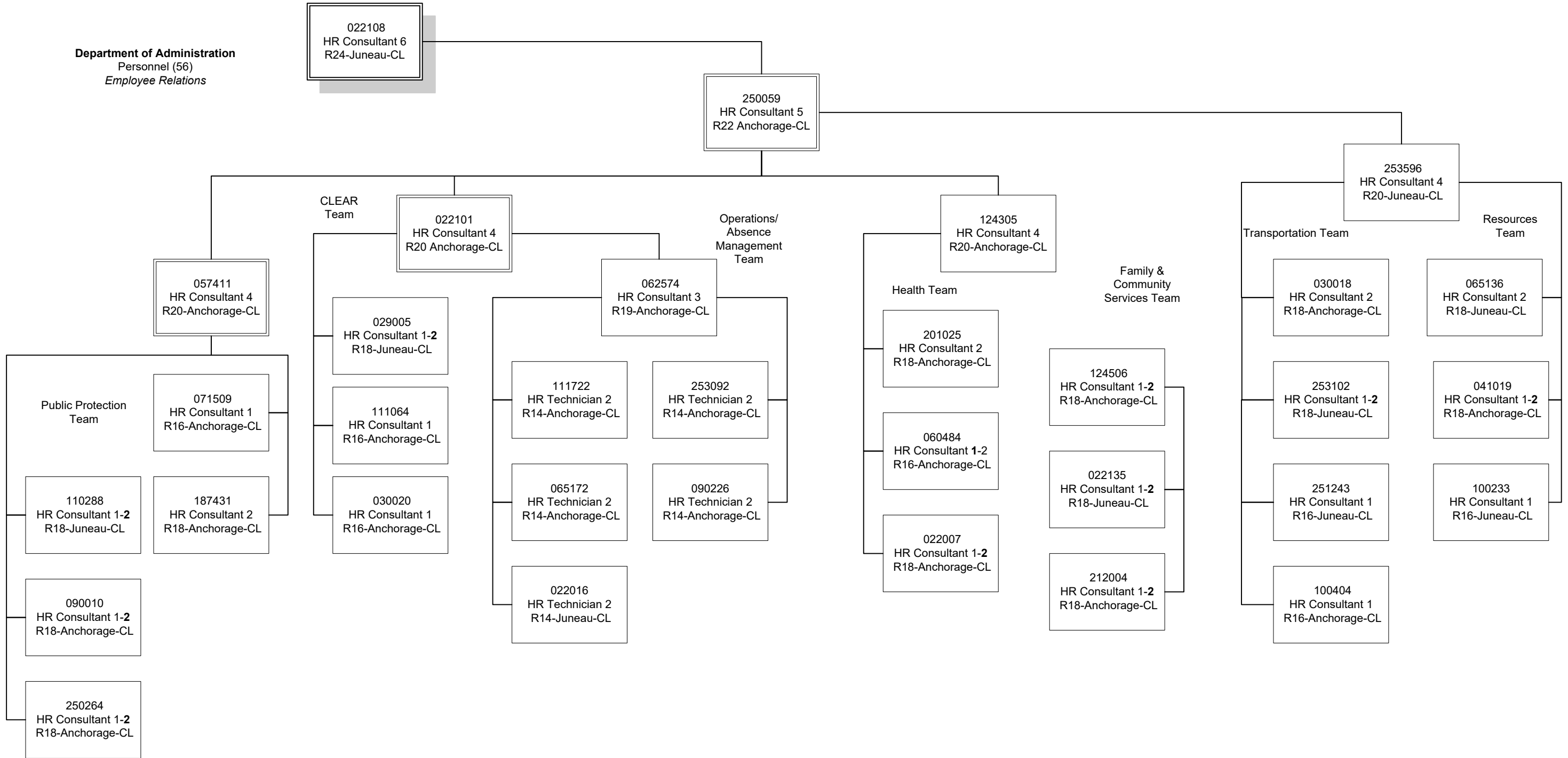
**Department of Administration**

Personnel (56)  
Classification



Individual Allocations

**Department of Administration**  
Personnel (56)  
Employee Relations



**Department of Administration**  
Personnel (56)  
*Learning & Development, Equal  
Employment Opportunity, and Workforce  
Services*

022100  
HR Consultant 6  
R24-Anchorage-CL

Workforce  
Services

Learning and  
Development

Equal Employment  
Opportunity

State Americans with  
Disabilities Act  
Coordinator

187053  
HR Consultant 4  
R20-Anchorage-CL

022122  
HR Consultant 5  
R22-Anchorage-CL

201024  
HR Consultant 5  
R22-Anchorage-CL

052144  
Program  
Coordinator 2  
R20-Anchorage-CL

Strategic  
Recruitment

022141  
HR Consultant 2  
R18-Anchorage-CL

022032  
HR Consultant 1  
R16-Juneau-CL

022052  
HR Tech 2  
R14-Anchorage-CL

026313  
HR Consultant 5  
R22-Anchorage-CL

051731  
HR Tech 3  
R15-Juneau-CL

066112  
HR Tech 2  
R14-Juneau-CL

071601  
Training Spec 2  
R18-Anchorage-CL

021029  
HR Consultant 2  
R18-Anchorage-CL

030179  
HR Consultant 1  
R16-Anchorage-CL

