

State of Alaska FY2026 Governor's Operating Budget

Department of Labor and Workforce Development Workers' Compensation Component Budget Summary

Component: Workers' Compensation

Contribution to Department's Mission

Advance injured workers' employment opportunities.

Core Services

- Provide support to insurers, claims administrators, employers, health providers, and injured workers by collecting data, maintaining case files, and reproducing case files, forms, and information to the public, attorneys, and rehabilitation specialists as needed.
- Facilitate the adjudication of disputes between parties through administration of Alaska Workers' Compensation Board hearings.
- Assist injured workers to return to work through administration of the Reemployment Benefits Program.
- Assist employers with alternatives to the commercial insurance market by administering executive officer waiver and workers' compensation self-insurance programs.
- Monitor employer compliance with insurance requirements of the Workers' Compensation Act through administration of the proof-of-insurance program.
- Investigate uninsured employers and Workers' Compensation claim fraud.
- Provide support to the Workers' Compensation Board and the Medical Services Review Committee.

Major Component Accomplishments in 2024

- Worked with the Medical Services Review Committee (MSRC) to continue its "phased-in" cost reduction approach to lowering medical costs gradually, which directly resulted in a 3.7 percent workers' compensation premium rate decrease in May 2016 and contributed to the premium rate reductions of 1.6 percent in 2017, 7.9 percent in 2018, 14.8 percent in 2019, 13.7 percent in 2020, 14.9 percent in 2021, 13.8 percent in 2022, 6.5 percent in 2023, and 10.4 percent in 2024. The National Council of Compensation Insurance has proposed a decrease of 5.5 percent for 2025, subject to approval by the Alaska Division of Insurance.
- Adjudications resolved 94 percent of disputed issues without a formal hearing through prehearings and mediation. The average days to decision issuance from record closure was 24 days; 91 percent of decisions were issued in 30 days or less. The average days to schedule a hearing after receipt of a request was 86.

Key Component Challenges

Workers' Compensation (WC) is primarily funded through fees assessed on workers' compensation insurance premiums paid by employers. Recently, employers have benefitted from lower medical costs and insurance premiums due to the introduction of a medical fee schedule and a strong campaign promoting workplace safety. Over the past decade, Alaska has reduced the cost of workers' compensation for employers by more than 27 percent. However, this success has created a new challenge: a deficit in revenue necessary to carry out operations.

Significant Changes in Results to be Delivered in FY2026

Workers' Compensation (WC) is launching a new program aimed at helping injured workers stay in their jobs or return to the workforce more quickly. This program will require an investment from Workers' Compensation (WC) to staff a position dedicated to overseeing communications between all parties involved, thereby saving time and resources for both employers and employees.

Statutory and Regulatory Authority

Statutory Authority:

AS 23.05.067
AS 23.30.005 - .400

Fees for Administration of Workers' Compensation
Alaska Workers' Compensation Act

Administrative Regulations:

8 AAC 45.010 - .900
8 AAC 46.010 - .900

Compensation/Medical Benefits & Board Proceedings
Self Insurance

Contact Information
<p>Contact: Charles Collins, Director Phone: (907) 465-6060 E-mail: Charles.Collins@alaska.gov</p>

Workers' Compensation Personal Services Information					
Authorized Positions			Personal Services Costs		
	FY2025 Management Plan	FY2026 Governor			
Full-time	45	45	Annual Salaries		3,584,451
Part-time	0	1	COLA		40,526
Nonpermanent	2	2	Premium Pay		0
			Annual Benefits		2,334,102
			Less 5.31% Vacancy Factor		(316,426)
			Lump Sum Premium Pay		0
			Board Honoraria		29,047
Totals	47	48	Total Personal Services		5,671,700

Position Classification Summary					
Job Class Title	Anchorage	Fairbanks	Juneau	Others	Total
Administrative Assistant 2	0	0	1	0	1
Administrative Officer 2	0	0	1	0	1
Chf of W/C Adj	1	0	0	0	1
Division Director - Px	0	0	1	0	1
Investigator 2	1	0	0	0	1
Investigator 3	2	1	1	0	4
Investigator 4	1	0	0	0	1
Office Assistant 1	1	0	4	0	5
Office Assistant 2	1	1	1	0	3
Program Coordinator 2	0	0	1	0	1
Project Assistant	0	0	1	0	1
Reemp Benef Adm	1	0	0	0	1
Student Intern 1	1	0	1	0	2
Ui Tech 1	1	0	0	0	1
W/C Hear Ofc 1	2	0	0	0	2
W/C Hear Ofc 2	2	2	1	0	5
Work Comp Tech	6	1	1	0	8
Workers Compensation Officer 1	2	0	0	0	2
Workers Compensation Officer 2	5	1	1	0	7
Totals	27	6	15	0	48

Component Board Summary					
Board Description	Member Count	Pay Per Day	Budgeted Days	Additional Pay	Total Cost
Workers Compensation Board	18	50.00	30	0.00	29,046.60
Total					29,046.60

Component Detail All Funds
Department of Labor and Workforce Development

Component: Workers' Compensation (344)
RDU: Workers' Compensation (112)

Non-Formula Component

	FY2024 Actuals	FY2025 Enrolled	FY2025 Authorized	FY2025 Management Plan	FY2026 Governor Adjusted Base	FY2026 Governor	FY2025 Management Plan vs FY2026 Governor	
1000 Personal Services	4,526.4	5,374.3	5,409.9	5,414.5	5,551.0	5,671.7	257.2	4.8%
2000 Travel	60.4	75.0	75.0	70.4	70.4	70.4	0.0	0.0%
3000 Services	1,014.1	1,079.8	1,079.8	1,079.8	1,045.8	1,050.5	-29.3	-2.7%
4000 Commodities	87.6	74.8	74.8	74.8	74.8	74.8	0.0	0.0%
5000 Capital Outlay	0.0	0.0	0.0	0.0	0.0	0.0	0.0	0.0%
7000 Grants, Benefits	11.5	11.6	11.6	11.6	11.6	11.6	0.0	0.0%
8000 Miscellaneous	0.0	0.0	0.0	0.0	0.0	0.0	0.0	0.0%
Totals	5,700.0	6,615.5	6,651.1	6,651.1	6,753.6	6,879.0	227.9	3.4%
Fund Sources:								
1004 Gen Fund (UGF)	19.8	19.8	19.8	19.8	19.8	145.2	125.4	633.3%
1157 Wrkrs Safe (DGF)	5,680.2	6,595.7	6,631.3	6,631.3	6,733.8	6,733.8	102.5	1.5%
Unrestricted General (UGF)	19.8	19.8	19.8	19.8	19.8	145.2	125.4	633.3%
Designated General (DGF)	5,680.2	6,595.7	6,631.3	6,631.3	6,733.8	6,733.8	102.5	1.5%
Other Funds	0.0	0.0	0.0	0.0	0.0	0.0	0.0	0.0%
Federal Funds	0.0	0.0	0.0	0.0	0.0	0.0	0.0	0.0%
Positions:								
Permanent Full Time	45	45	45	45	45	45	0	0.0%
Permanent Part Time	0	0	0	0	1	1	1	100.0%
Non Permanent	2	2	2	2	2	2	0	0.0%

Change Record Detail - Multiple Scenarios with Descriptions
Department of Labor and Workforce Development

Component: Workers' Compensation (344)
RDU: Workers' Compensation (112)

Scenario/Change Record Title	Trans Type	Totals	Personal Services	Travel	Services	Commodities	Capital Outlay	Grants, Benefits	Miscellaneous	Positions		NP
										PFT	PPT	
***** Changes From FY2025 Enrolled To FY2025 Authorized *****												
FY2025 Enrolled	Enrolled	6,615.5	5,374.3	75.0	1,079.8	74.8	0.0	11.6	0.0	45	0	2
1004 Gen Fund		19.8										
1157 Wrkrs Safe		6,595.7										
Compensation for Certain State Employees Ch5 SLA2024 (SB259) (Sec2 Ch7 SLA2024 P54 L23 (HB268))												
	FisNot	14.8	14.8	0.0	0.0	0.0	0.0	0.0	0.0	0	0	0
1157 Wrkrs Safe		14.8										
One salary step adjustment for employees not covered by a collective bargaining agreement.: \$14.8												
Compensation for Certain State Employees Ch5 SLA2024 (SB259) (Sec2 Ch7 SLA2024 P54 L23 (HB268))												
	FisNot	20.8	20.8	0.0	0.0	0.0	0.0	0.0	0.0	0	0	0
1157 Wrkrs Safe		20.8										
Five percent cost of living adjustment for employees not covered by a collective bargaining unit.: \$20.8												
Subtotal		6,651.1	5,409.9	75.0	1,079.8	74.8	0.0	11.6	0.0	45	0	2
***** Changes From FY2025 Authorized To FY2025 Management Plan *****												
Align Authority with FY2025 Travel Plan and to Address Personal Services Needs												
	LIT	0.0	4.6	-4.6	0.0	0.0	0.0	0.0	0.0	0	0	0
Transfer Workers' Safety and Compensation Administrative Account authority from travel to personal services to align authority with the FY2025 Travel Plan and projected personal services needs.												
Subtotal		6,651.1	5,414.5	70.4	1,079.8	74.8	0.0	11.6	0.0	45	0	2
***** Changes From FY2025 Management Plan To FY2026 Governor Adjusted Base *****												
FY2026 Salary, Health Insurance, and Retirement Increases												
	SalAdj	102.5	102.5	0.0	0.0	0.0	0.0	0.0	0.0	0	0	0
1157 Wrkrs Safe		102.5										
Salary, health and retirement increases: \$102.5												
AlaskaCare increase from \$1908 to \$2030.11 per member per month: \$11.8												
FY2026 APEA (non-law enforcement) 3% cost of living adjustment: \$21.8												
FY2026 3% cost of living adjustment for employees not covered by a collective bargaining agreement: \$16.0												

Change Record Detail - Multiple Scenarios with Descriptions
Department of Labor and Workforce Development

Component: Workers' Compensation (344)
RDU: Workers' Compensation (112)

Scenario/Change Record Title	Trans Type	Totals	Personal Services	Travel	Services	Commodities	Capital Outlay	Grants, Benefits	Miscellaneous	Positions		
										PFT	PPT	NP
FY2026 PERS rate adjustment from 26.76% to 28.33%: \$52.9												
Transfer Unemployment Insurance Technician 1 from Unemployment Insurance for Stay-at-Work Program Support	Trin	0.0	0.0	0.0	0.0	0.0	0.0	0.0	0.0	0	1	0
Transfer vacant part-time position without funding from Unemployment Insurance for reclassification to support the Stay-at-Work program: Part-time Unemployment Insurance Technician 1 (076023), range 14, located in Juneau												
Align Authority to Address Personal Services Needs	LIT	0.0	34.0	0.0	-34.0	0.0	0.0	0.0	0.0	0	0	0
Transfer authority from services to personal services to address personal services needs. The remaining services authority is sufficient to meet anticipated expenditures.												
Subtotal		6,753.6	5,551.0	70.4	1,045.8	74.8	0.0	11.6	0.0	45	1	2
***** Changes From FY2026 Governor Adjusted Base To FY2026 Governor *****												
Support for Stay-at-Work Program	Inc	125.4	120.7	0.0	4.7	0.0	0.0	0.0	0.0	0	0	0
1004 Gen Fund		125.4										
Add associated funding to support one full-time permanent position located in Juneau for the Stay-at-Work program. The language of the Stay-at-Work legislation (originally Senate Bill 206) was incorporated into SB 147 and signed into law on July 11, 2024. The department fiscal note included one full-time position and associated authority beginning January 1, 2025. The fiscal note was inadvertently omitted from the fiscal note packet during incorporation into SB 147 and therefore was not included in the division's budget.												
Totals		6,879.0	5,671.7	70.4	1,050.5	74.8	0.0	11.6	0.0	45	1	2

Line Item Detail (1676)
Department of Labor and Workforce Development
Travel

Component: Workers' Compensation (344)

Line Number	Line Name		FY2024 Actuals	FY2025 Management Plan	FY2026 Governor
2000	Travel		60.4	70.4	70.4
Object Class	Servicing Agency	Explanation	FY2024 Actuals	FY2025 Management Plan	FY2026 Governor
2000 Travel Detail Totals			60.4	70.4	70.4
2000	In-State Employee Travel	In-state employee travel to support the department's mission.	43.2	50.4	50.4
2001	In-State Non-Employee Travel	In-state non-employee travel.	0.8	1.0	1.0
2002	Out of State Employee Travel	Out of state employee travel.	16.0	18.0	18.0
2003	Out of State Non-Employee Travel	Out of state non-employee travel.	0.4	1.0	1.0

Line Item Detail (1676)
Department of Labor and Workforce Development
Services

Component: Workers' Compensation (344)

Line Number	Line Name		FY2024 Actuals	FY2025 Management Plan	FY2026 Governor
3000	Services		1,014.1	1,079.8	1,050.5
Object Class	Servicing Agency	Explanation	FY2024 Actuals	FY2025 Management Plan	FY2026 Governor
3000 Services Detail Totals			1,014.1	1,079.8	1,050.5
3000	Education Services	Training, education, and memberships.	14.4	15.0	15.0
3001	Financial Services	Financial services, including auditing and accounting, consulting, insurance, or interest expense.	66.2	70.5	70.5
3003	Information Technology	Information technology, including training, consulting, leases, software, and contract for Database maintenance.	62.6	65.0	65.0
3004	Telecommunications	Local, long distance, and cellular telephone charges, television, data/network, telecommunication equipment, and other wireless charges from outside vendors.	7.9	6.9	6.9
3006	Delivery Services	Freight, courier services, and postage.	35.5	35.0	35.0
3007	Advertising and Promotions	Advertising for regulation changes, board meetings, recruitments, or other public notices.	1.4	1.0	1.0
3008	Utilities	Electricity, heating fuel, water, sewage, recycling, heating fuel, trash, and confidential document and other disposal services.	5.4	9.2	9.2
3009	Structure/Infrastructure/Land	Room rental for training and seminar space, board or council meetings, or storage and archiving needs.	24.7	23.3	23.3
3010	Equipment/Machinery	Machinery, furniture, and equipment	17.4	15.8	15.8

Line Item Detail (1676)
Department of Labor and Workforce Development
Services

Component: Workers' Compensation (344)

Object Class	Servicing Agency	Explanation	FY2024 Actuals	FY2025 Management Plan	FY2026 Governor
3000 Services Detail Totals			1,014.1	1,079.8	1,050.5
3011	Other Services	purchase, repairs, maintenance, rentals, and leases. Other services including interpreters, consulting, print, copy and graphic services, and safety services.	6.0	6.0	6.0
3012	Inter-Agency Federal Indirect Rate Allocation	Labor - Management Services (335) Indirect cost allocation for departmental purchasing, accounting, reports, personnel consultation and other services provided by Management Services.	285.2	346.1	346.1
3013	Inter-Agency Data Processing Operations Allocation	Admin - Department-wide Allocation for Data Processing network and support services.	36.5	92.0	92.0
3016	Inter-Agency Economic Development	Labor - Management Services (335) Reimbursable services agreement with Data Processing for system maintenance and enhancements.	6.7	8.0	8.0
3017	Inter-Agency Information Technology Non-Telecommunications	Admin - Department-wide Reimbursable services agreement with the Office of Information Technology for non-telecommunications support, including software and computer services.	145.9	143.3	143.3
3018	Inter-Agency Information Technology Telecommunications	Admin - Department-wide Reimbursable services agreement with the Office of Information Technology for telecommunication support.	15.0	15.8	15.8
3021	Inter-Agency Mail	Admin - Department-wide Reimbursable services agreement with Shared Services of Alaska for central mailroom support and services.	47.7	44.6	44.6
3022	Inter-Agency Human Resources	Admin - Department-wide Reimbursable services agreement with the Division of Personnel and Labor Relations for human resources and personnel services.	28.9	29.2	29.2

Line Item Detail (1676)
Department of Labor and Workforce Development
Services

Component: Workers' Compensation (344)

Object Class		Servicing Agency	Explanation	FY2024 Actuals	FY2025 Management Plan	FY2026 Governor
3000 Services Detail Totals				1,014.1	1,079.8	1,050.5
3023	Inter-Agency Building Leases	Admin - Department-wide	State-owned facility space rent or other property leases.	157.9	95.7	66.4
3024	Inter-Agency Legal	Law - Department-wide	Reimbursable services agreement with the Department of Law for legal services.	3.7	10.0	10.0
3026	Inter-Agency Insurance	Admin - Department-wide	Reimbursable services agreement with the Division of Risk Management for risk management insurance charges for leased buildings, repossessed properties, public official bonds, and overhead.	3.0	3.9	3.9
3027	Inter-Agency Financial	Admin - Department-wide	Reimbursable services agreement with the Division of Finance for system services for State accounting and payroll (IRIS), and reporting (ALDER) systems.	34.7	36.2	36.2
3037	State Equipment Fleet	Trans - Department-wide	State equipment fleet fixed cost services for equipment replacement, maintenance and fuel, both allowable and non-allowable.	7.4	7.3	7.3

Line Item Detail (1676)
Department of Labor and Workforce Development
Commodities

Component: Workers' Compensation (344)

Line Number	Line Name		FY2024 Actuals	FY2025 Management Plan	FY2026 Governor
4000	Commodities		87.6	74.8	74.8
Object Class	Servicing Agency	Explanation	FY2024 Actuals	FY2025 Management Plan	FY2026 Governor
4000 Commodities Detail Totals			87.6	74.8	74.8
4000	Business	General business supplies such as office consumables and computer equipment.	86.6	69.2	69.3
4002	Household/Institutional	Office supplies, supplies and consumables for public meetings, and cleaning products.	0.1	0.1	5.0
4004	Safety	Safety gear and protective clothing.	0.5	5.0	0.0
4011	Electrical	Electrical parts and supplies.	0.4	0.5	0.5

Line Item Detail (1676)
Department of Labor and Workforce Development
Grants, Benefits

Component: Workers' Compensation (344)

Line Number	Line Name		FY2024 Actuals	FY2025 Management Plan	FY2026 Governor
7000	Grants, Benefits		11.5	11.6	11.6
Object Class	Servicing Agency	Explanation	FY2024 Actuals	FY2025 Management Plan	FY2026 Governor
		7000 Grants, Benefits Detail Totals	11.5	11.6	11.6
7002	Benefits	Supplemental workers' compensation benefits to permanently disabled workers in compliance with a 1974 amendment to the Workers' Compensation Act (AS 23.30.172).	11.5	11.6	11.6

Revenue Detail (1681)
Department of Labor and Workforce Development

Component: Workers' Compensation (344)

Revenue Type (OMB Fund Code) Revenue Source	Component	Comment	FY2024 Actuals	FY2025 Management Plan	FY2026 Governor
6004 Gen Fund (1004 Gen Fund)			19.8	19.8	145.2
6004 General Fund Public Protection - Judgement Settlemnt		Judgements and settlements.	19.8	19.8	145.2
6157 Wrkrs Safe (1157 Wrkrs Safe)			6,722.8	6,631.3	6,733.8
6780 Workers Safety/Compensation Adminstrtn Acct - Ins Prem Tax		The Workers' Safety and Compensation Administration Account (AS 23.05.067) is funded by assessing a fee (2.5 percent) against the premiums paid by employers for workers compensation insurance; for those self-insured employers, the amount is 2.7 percent of the claims paid. This is the actual and projected revenue collection for FY24-26.	6,254.9	6,122.4	6,121.0
6780 Workers Safety/Compensation Adminstrtn Acct - Ins Prem Tax		Uncollectible authority reserved for future flexibility.	0.0	74.9	138.5
6782 Workers Safety/Compensation Administration Account-Misc		Miscellaneous revenue such as copy or transcription fees.	3.5	3.5	3.3
6783 Workers Safety/Compensation Admin Account-Penalties		The Workers' Safety and Compensation Administration Account (AS 23.05.067) is funded by assessing penalties for late filed compensation and annual reports.	464.4	430.5	471.0

Inter-Agency Services (1682)
Department of Labor and Workforce Development

Component: Workers' Compensation (344)

				FY2024 Actuals	FY2025 Management Plan	FY2026 Governor
Component Totals				772.6	832.1	802.8
With Department of Labor and Workforce Development				291.9	354.1	354.1
With Department of Administration				469.6	460.7	431.4
With Department of Law				3.7	10.0	10.0
With Department of Transportation and Public Facilities				7.4	7.3	7.3
Object Class	Servicing Agency	Explanation	FY2024 Actuals	FY2025 Management Plan	FY2026 Governor	
3012	Inter-Agency Federal Indirect Rate Allocation	Labor - Management Services (335) Indirect cost allocation for departmental purchasing, accounting, reports, personnel consultation and other services provided by Management Services.	285.2	346.1	346.1	
3013	Inter-Agency Data Processing Operations Allocation	Admin - Department-wide Allocation for Data Processing network and support services.	36.5	92.0	92.0	
3016	Inter-Agency Economic Development	Labor - Management Services (335) Reimbursable services agreement with Data Processing for system maintenance and enhancements.	6.7	8.0	8.0	
3017	Inter-Agency Information Technology Non-Telecommunications	Admin - Department-wide Reimbursable services agreement with the Office of Information Technology for non-telecommunications support, including software and computer services.	145.9	143.3	143.3	
3018	Inter-Agency Information Technology Telecommunications	Admin - Department-wide Reimbursable services agreement with the Office of Information Technology for telecommunication support.	15.0	15.8	15.8	
3021	Inter-Agency Mail	Admin - Department-wide Reimbursable services agreement with Shared Services of Alaska for central mailroom support and services.	47.7	44.6	44.6	
3022	Inter-Agency Human Resources	Admin - Department-wide Reimbursable services agreement	28.9	29.2	29.2	

Inter-Agency Services (1682)
Department of Labor and Workforce Development

Component: Workers' Compensation (344)

Object Class	Servicing Agency	Explanation	FY2024 Actuals	FY2025 Management Plan	FY2026 Governor
		with the Division of Personnel and Labor Relations for human resources and personnel services.			
3023	Inter-Agency Building Leases	Admin - Department-wide			
		State-owned facility space rent or other property leases.	157.9	95.7	66.4
3024	Inter-Agency Legal	Law - Department-wide			
		Reimbursable services agreement with the Department of Law for legal services.	3.7	10.0	10.0
3026	Inter-Agency Insurance	Admin - Department-wide			
		Reimbursable services agreement with the Division of Risk Management for risk management insurance charges for leased buildings, repossessed properties, public official bonds, and overhead.	3.0	3.9	3.9
3027	Inter-Agency Financial	Admin - Department-wide			
		Reimbursable services agreement with the Division of Finance for system services for State accounting and payroll (IRIS), and reporting (ALDER) systems.	34.7	36.2	36.2
3037	State Equipment Fleet	Trans - Department-wide			
		State equipment fleet fixed cost services for equipment replacement, maintenance and fuel, both allowable and non-allowable.	7.4	7.3	7.3

Personal Services Expenditure Detail
Department of Labor and Workforce Development

Scenario: FY2026 Governor (22363)
Component: Workers' Compensation (344)
RDU: Workers' Compensation (112)

PCN	Job Class Title	Time Status	Retire Code	Barg Unit	Location	Salary Sched	Range / Step	Comp Months	Split / Count	Annual Salaries	COLA	Premium Pay	Annual Benefits	Total Costs	UGF Amount
071026	Program Coordinator 2	FT	A	SS	Juneau	205	20M / N	6.0	**	58,328	2,464	0	36,068	96,860	0
071720	Office Assistant 1	FT	A	GP	Juneau	205	8B / C	12.0		38,304	0	0	34,706	73,010	0
073001	Division Director - Px	FT	A	XE	Juneau	N05	27J	8.0	**	101,309	4,280	0	57,604	163,193	0
073003	Office Assistant 1	FT	A	GP	Juneau	205	8C / D	12.0		39,544	0	0	35,213	74,757	0
073004	Work Comp Tech	FT	A	GP	Juneau	205	12D / E	12.0		52,967	0	0	40,692	93,659	0
073005	Chf of W/C Adj	FT	A	XE	Anchorage	A00	25Q / R	12.0		194,146	7,845	0	102,445	304,436	0
073007	Workers Compensation Officer 2	FT	A	GP	Anchorage	200	18G	12.0		81,764	0	0	52,447	134,211	0
073009	Workers Compensation Officer 2	FT	A	SS	Juneau	605	18J	12.0		89,586	3,785	0	61,087	154,458	0
073010	Office Assistant 1	FT	A	GP	Juneau	205	8N / O	12.0		52,858	0	0	40,647	93,505	0
073011	Office Assistant 2	FT	A	GP	Anchorage	200	10A / B	12.0		39,985	0	0	35,393	75,378	0
073012	Workers Compensation Officer 2	FT	A	GP	Anchorage	200	18E / F	12.0		76,534	0	0	50,312	126,846	0
073013	W/C Hear Ofc 2	FT	A	GP	Anchorage	200	24D / E	12.0		112,360	0	0	64,936	177,296	0
073014	Office Assistant 2	FT	A	GP	Juneau	205	10A / B	12.0		41,984	0	0	36,209	78,193	0
073024	Workers Compensation Officer 2	FT	A	SS	Fairbanks	603	18K	12.0		90,730	3,833	0	61,554	156,117	0
073025	Work Comp Tech	FT	A	GP	Anchorage	200	12A / B	12.0		45,094	0	0	37,478	82,572	0
073026	Administrative Officer 2	FT	A	SS	Juneau	205	19K / L	8.0	**	68,390	2,889	0	44,262	115,541	0
073027	Workers Compensation Officer 2	FT	A	GP	Anchorage	200	18M / N	12.0		93,971	0	0	57,430	151,401	0
073030	Work Comp Tech	FT	A	GP	Anchorage	200	12L / M	12.0		60,678	0	0	43,839	104,517	33,707
073031	Workers Compensation Officer 1	FT	A	GP	Anchorage	200	16A / B	12.0		59,417	0	0	43,325	102,742	0
073036	Office Assistant 2	FT	A	GP	Fairbanks	203	10C / D	12.0		44,083	0	0	37,065	81,148	0
073037	Work Comp Tech	FT	A	GP	Anchorage	200	12B / C	12.0		46,458	0	0	38,035	84,493	0
073040	Workers Compensation Officer 2	FT	A	GP	Anchorage	200	18D / E	12.0		76,176	0	0	50,166	126,342	0
073042	W/C Hear Ofc 2	FT	A	GP	Fairbanks	203	24C / D	12.0		114,124	0	0	65,656	179,780	0
073043	W/C Hear Ofc 1	FT	A	GP	Anchorage	200	22A	12.0		87,341	0	0	54,723	142,064	0
073044	W/C Hear Ofc 2	FT	A	GP	Fairbanks	203	24K / L	12.0		138,028	0	0	75,414	213,442	0
073046	Workers Compensation Officer 1	FT	A	GP	Juneau	205	16O	6.0	*	45,884	0	0	28,265	74,149	0
073047	Reemp Benef Adm	FT	A	XE	Anchorage	N00	22J / K	12.0		112,057	4,734	0	70,116	186,907	0
073052	Work Comp Tech	FT	A	GP	Anchorage	200	12B / C	12.0		46,775	0	0	38,164	84,939	0
073055	Administrative Assistant 2	FT	A	SS	Juneau	605	14D	8.0	**	42,510	1,796	0	33,698	78,004	0
073056	Workers Compensation	FT	A	GP	Anchorage	200	16G	12.0		71,526	0	0	48,268	119,794	0

Note: If a position is split, an asterisk (*) will appear in the Split/Count column. If the split position is also counted in the component, two asterisks (**) will appear in this column. [No valid job title] appearing in the Job Class Title indicates that the PCN has an invalid class code or invalid range for the class code effective date of this scenario.

Personal Services Expenditure Detail
Department of Labor and Workforce Development

Scenario: FY2026 Governor (22363)
Component: Workers' Compensation (344)
RDU: Workers' Compensation (112)

PCN	Job Class Title	Time Status	Retire Code	Barg Unit	Location	Salary Sched	Range / Step	Comp Months	Split / Count	Annual Salaries	COLA	Premium Pay	Annual Benefits	Total Costs	UGF Amount
073058	Officer 1 Workers Compensation Officer 2	FT	A	SS	Anchorage	600	18D / E	12.0		81,162	3,429	0	57,648	142,239	0
073059	W/C Hear Ofc 1	FT	A	GP	Anchorage	200	22A	12.0		87,341	0	0	54,723	142,064	0
073060	W/C Hear Ofc 2	FT	A	GP	Anchorage	200	24N / O	12.0		147,500	0	0	79,280	226,780	0
073061	W/C Hear Ofc 2	FT	A	GP	Juneau	205	24G / J	12.0		131,265	0	0	72,653	203,918	0
073062	Office Assistant 1	FT	A	GP	Juneau	205	8L	12.0		48,906	0	0	39,034	87,940	0
073063	Work Comp Tech	FT	A	GP	Fairbanks	203	12D / E	12.0		50,257	0	0	39,586	89,843	0
073064	Investigator 2	FT	A	GP	Anchorage	200	16F	12.0		69,147	0	0	47,296	116,443	0
073068	Investigator 3	FT	A	GP	Juneau	205	18K / L	12.0		93,175	0	0	57,105	150,280	0
073069	Investigator 3	FT	A	GP	Fairbanks	203	18M	12.0		96,525	0	0	58,472	154,997	0
073070	Investigator 3	FT	A	GP	Anchorage	200	18O / P	12.0		102,191	0	0	60,785	162,976	0
073071	Office Assistant 1	FT	A	GP	Anchorage	200	8C / D	12.0		37,598	0	0	34,418	72,016	0
073072	Investigator 3	FT	A	GP	Anchorage	200	18B / C	12.0		71,288	0	0	48,170	119,458	0
074557	Investigator 4	FT	A	SS	Anchorage	200	20Q	12.0		123,115	5,201	0	74,773	203,089	0
075527	Project Assistant	FT	A	GP	Juneau	205	16K	7.0	**	47,296	0	0	30,431	77,727	0
075872	Work Comp Tech	FT	A	GP	Anchorage	200	12L / M	12.0		60,304	0	0	43,687	103,991	0
076023	Ui Tech 1	PT	A	GP	Anchorage	100	14A	12.0		50,934	0	0	20,791	71,725	71,725
077005	Work Comp Tech	FT	A	GP	Anchorage	200	12B / C	12.0		47,307	0	0	38,381	85,688	0
07IN1091	Student Intern 1	NP	N	GG	Juneau	205	6A	12.0		8,074	0	0	822	8,896	0
07IN1902	Student Intern 1	NP	N	EE	Anchorage	N00	6A / B	12.0		8,155	270	0	830	9,255	0

Total Positions				Total Salary Costs:	3,584,451
Full Time Positions:	45	New	0	Total COLA:	40,526
Part Time Positions:	1	Deleted	0	Total Premium Pay:	0
Non Permanent Positions:	2		0	Total Benefits:	2,334,102
Positions in Component:	48		0	Total Pre-Vacancy:	5,959,079
				Minus Vacancy Adjustment of 5.31%:	(316,426)
				Total Post-Vacancy:	5,642,653
Total Component Months:	559.0			Plus Lump Sum Premium Pay:	0
				Plus Board Honoraria Pay:	29,047
				Personal Services Line 100:	5,671,700

Note: If a position is split, an asterisk (*) will appear in the Split/Count column. If the split position is also counted in the component, two asterisks (**) will appear in this column. [No valid job title] appearing in the Job Class Title indicates that the PCN has an invalid class code or invalid range for the class code effective date of this scenario.

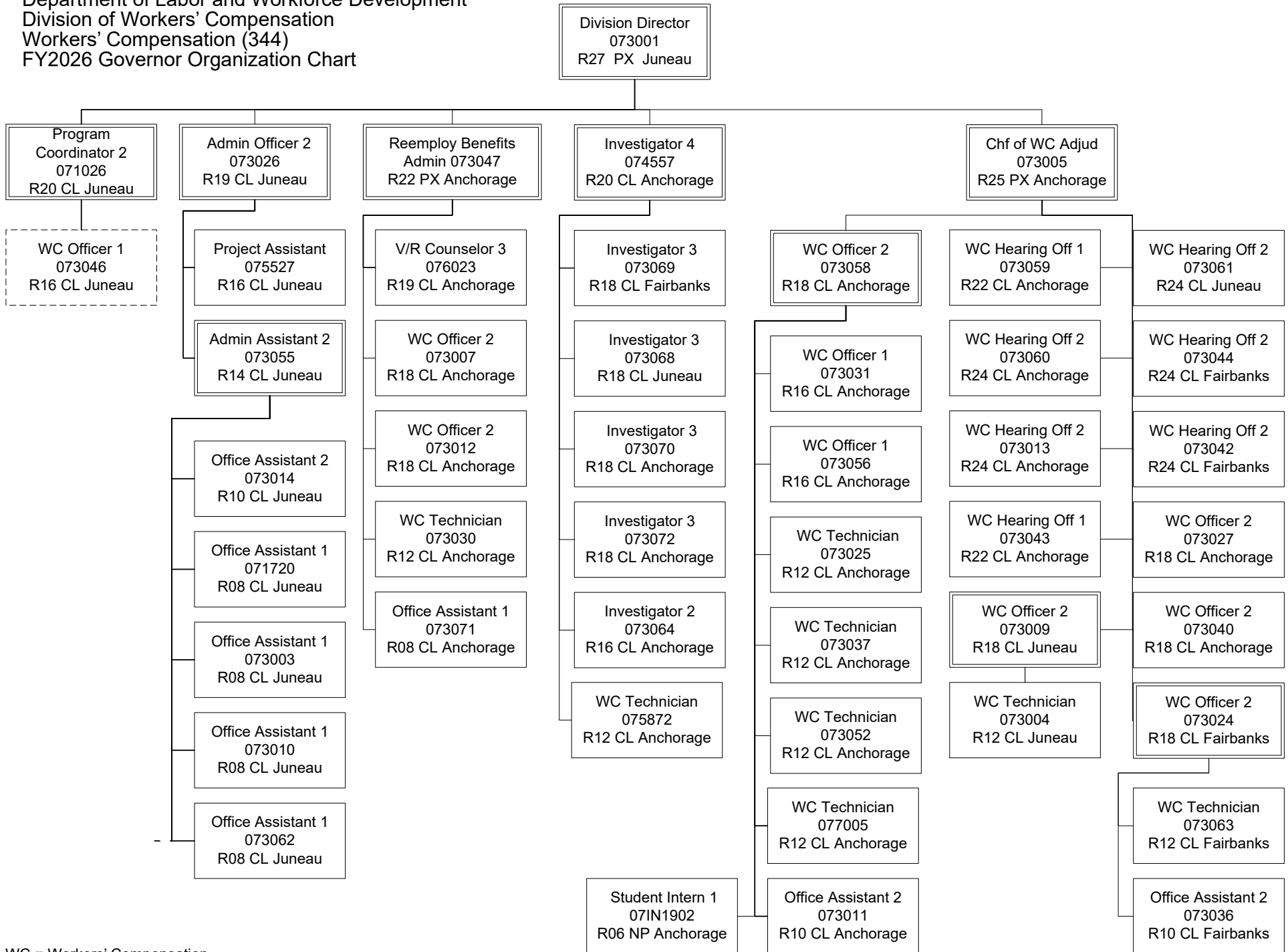
Personal Services Expenditure Detail
Department of Labor and Workforce Development

Scenario: FY2026 Governor (22363)
Component: Workers' Compensation (344)
RDU: Workers' Compensation (112)

PCN Funding Sources:	Pre-Vacancy	Post-Vacancy	Percent
1004 Unrestricted General Fund Receipts	105,432	99,833	1.77%
1157 Workers Safety and Compensation Administration Account	5,853,647	5,542,820	98.23%
Total PCN Funding:	5,959,079	5,642,653	100.00%

Note: If a position is split, an asterisk (*) will appear in the Split/Count column. If the split position is also counted in the component, two asterisks (**) will appear in this column. [No valid job title] appearing in the Job Class Title indicates that the PCN has an invalid class code or invalid range for the class code effective date of this scenario.

Department of Labor and Workforce Development
 Division of Workers' Compensation
 Workers' Compensation (344)
 FY2026 Governor Organization Chart



WC = Workers' Compensation