

# **State of Alaska FY2026 Governor's Operating Budget**

## **Department of Labor and Workforce Development Workforce Services Component Budget Summary**

**Component: Workforce Services****Contribution to Department's Mission**

Connect job seekers with employers and provide training and support services to unemployed workers to upgrade skill levels required to enter the workforce.

**Core Services**

- Strengthen Alaska's workforce by providing vital connections between job openings and qualified, job-ready workers through job centers located throughout the State and via the online Alaska Labor Exchange System (ALEXsys).
- Provide services to employers including connecting them with job seekers, posting their jobs on ALEXsys and promoting development of registered apprenticeship programs.
- Provide employment assistance to job seekers to secure employment and provide specialized employment services and case management to veterans, low-income individuals, individuals with barriers to employment, and unemployed workers.
- Provide case management and financial assistance to job seekers who are eligible for State and federal job training and placement programs.
- Administer federal employment and training grant programs to assist Alaskans to enter the workforce.

**Major Component Accomplishments in 2024**

- Implemented 105 enhancements to the AlaskaJobs one-stop labor exchange and case management system in partnership with the system contractor. This integrated system offers single sign-on through myAlaska, supports federal Workforce Innovation and Opportunity Act (WIOA) participation reporting, expands self-service options for external users, and enables staff to deliver more efficient services to customers.
- Completed installation of visitor kiosks in all Alaska Job Centers, enabling visitors to select service options upon arrival. The system tracks service metrics such as wait times, time spent assisting, and most common service requests, enhancing service efficiency and improving reporting capabilities.
- Provided case management and financial support for training services to 1,696 unique participants, totaling \$7.6 million in assistance, achieving a record level of services!
- Expanded outreach for the Incumbent Worker Training program, resulting in nearly triple the prior year's participation. Seventeen employers received \$194,000 in federal WIOA funds to train 58 incumbent workers, many of whom earned portable credentials or wage increases.
- Conducted boot camp-style case management training for staff administering State and federal grants for individual participants through the Alaska Job Center Network. This training, designed for consistent statewide delivery, covers all aspects of participant interaction from inquiry to follow-up, with a flexible dynamic curriculum that adapts as needed.
- Adopted and implemented the Alaska State Adult Education College and Career Readiness Standards in Mathematics, Language Arts, and Digital Literacy within the Alaska Adult Education (AAE) program. AAE also administered grants to assist 1,305 full-time students with learning objectives to transition into employment, training, or higher education, and supported 503 individuals in earning a high school equivalency diploma via GED.
- Issued 1,289 certifications, equating to \$3.3 million in tax credits for employers through the Work Opportunity Tax Credit program; provided 10 Fidelity Bonding program bonds totaling \$50,000 in coverage for justice-involved individuals; and processed 155 H-2A and H-2B job orders for 5,077 positions through the Foreign Labor Certification program, including 3,661 positions certified by the Office of Foreign Labor Certification.

- Provided Rapid Response services to 17 employers facing closures, assisting approximately 394 Alaska workers in transition. These services help workers adapt to job loss due to permanent closures, mass layoffs, and natural or other disasters by connecting them with employment support resources.
- Assisted 26,025 job seekers through 250,033 self-service and staff-assisted services within the Alaska Job Center Network and the AlaskaJobs system. Also, 23,249 job orders were posted on AlaskaJobs, equating to 70,816 available job openings for approved employers.
- Served 1,252 veterans and spouses with 5,907 staff-assisted services and assisted 78 employers with veteran hiring through the Jobs for Veterans State Grant program. The November 2023 Veterans and Military Spouses Job Fair attracted approximately 250 participants and over 100 employers, training providers, and apprenticeship sponsors.
- Provided a full schedule of pre-release workforce services as part of a partnership with the Alaska Department of Corrections, increasing job placement engagement for justice-involved individuals pre- and post-release. Staff administered 1,213 WorkKeys assessments, resulting in 318 job seekers earning 327 National Career Readiness Certificates, which affirm that a job seeker has skills desired by employers.
- Expanded Alaska's Eligible Training Provider List (ETPL) to include 715 programs from 83 providers across the state. The University of Alaska, with its multiple campuses, continues to be the largest provider, offering more than half of all ETPL programs. Outreach by Job Center staff and quarterly invitations to newly registered apprenticeships from Alaska's United States Department of Labor State Director help to continuously grow the list, ensuring program participants have a diverse range of training options.
- Provided Reemployment Services and Eligibility Assessment (RESEA) program services to 2,926 Unemployment Insurance claimants, with 1,909 successfully completing RESEA program requirements.
- Partnered with the Alaska Department of Education and Early Development (DEED) to introduce the Alaska Career Guide initiative and hired staff in Fairbanks and Bethel to serve school districts in these and surrounding areas. Funded through Alaska's Career and Technical Education funds in the FY2025 Governor's Budget, the initiative provides students in rural Alaska with essential guidance for post-secondary and career success. The initiative is a collaborative public-private partnership involving DEED, the rootEd Alliance, the Bristol Bay Regional Career and Technical Education Consortium, and the Sealaska Heritage Institute.

## **Key Component Challenges**

- Demand for training services has reached an all-time high, outpacing available funding. Last fiscal year, training services provided through the Alaska Job Centers set a new record, while federal WIOA funding that supports these activities has been reduced by nearly 10 percent per year for each of the last four years. This reduction has put added strain on resources, impacting the ability to meet the increasing need for training and workforce development services statewide.
- Implementing a second interview in the RESEA program will require extensive coordination and training for staff across Unemployment Insurance (UI) and Workforce Services. This new intervention, aimed at expediting UI claimants' return to the workforce, is set to launch this fiscal year to support jobseekers in securing and maintaining long-term employment. The effectiveness of this approach will be closely monitored through an evaluation and review process to assess its impact and potential for ongoing implementation.

## **Significant Changes in Results to be Delivered in FY2026**

The AlaskaJobs mobile application is currently in development, with a projected launch by FY2026. This app aims to enhance accessibility for job seekers across Alaska, enabling them to search and apply for job opportunities directly from their mobile devices. Once launched, the app will streamline job searches, expand access to available positions, and improve connectivity between job seekers and employers statewide.

## Statutory and Regulatory Authority

Federal Authority:

Public Law 73-30	Wagner-Peyser Act of 1933, amended by Workforce Investment Act of 1998
Public Law 74-271	Social Security Act of 1935
Public Law 93-618	Trade Act of 1974 as amended
Public Law 103-152	Unemployment Compensation Amendments of 1993
Public Law 104-193	Personal Responsibility and Work Opportunity Reconciliation Act of 1995
Public Law 106-170	Ticket to Work and Work Incentives Improvement Act of 1999
Public Law 106-501	Community Service Employment for Older Americans, as amended in 2006
Public Law 107-147	Job Creation and Worker Assistance Act of 2002
Public Law 107-210	Trade Adjustment Assistance Reform Act of 2002
Public Law 107-288	Jobs for Veterans Act of 2002
Public Law 108-311	Working Families Tax Relief Act of 2004
Public Law 111-5	American Recovery and Reinvestment Act of 2009
Public Law 111-8	Omnibus Appropriations Act of 2009
Public Law 113-128	Workforce Innovation and Opportunity Act Title III
20 CFR parts 618, 639, 651-687	WIOA Regulations

Statutory Authority:

AS 23.20	Alaska Employment Security Act
AS 44.31	Department of Labor and Workforce Development
Admin Order #113	Alaska Job Training Coordinating Council - Relating to employment/training of workforce.

Administrative Regulations:

8 AAC 85	Employment Security
8 AAC 99	Adult Basic Education and Diplomas Under Special Conditions

Contact Information
<p><b>Contact:</b> Paloma Harbour, Director <b>Phone:</b> (907) 723-6047 <b>E-mail:</b> paloma.harbour@alaska.gov</p>

Workforce Services Personal Services Information				
Authorized Positions			Personal Services Costs	
	FY2025 Management Plan	FY2026 Governor		
Full-time	120	120	Annual Salaries	8,356,606
Part-time	0	0	COLA	109,932
Nonpermanent	6	6	Premium Pay	0
			Annual Benefits	5,787,436
			<i>Less 7.00% Vacancy Factor</i>	<i>(997,778)</i>
			Lump Sum Premium Pay	0
<b>Totals</b>	<b>126</b>	<b>126</b>	<b>Total Personal Services</b>	<b>13,256,196</b>

Position Classification Summary					
Job Class Title	Anchorage	Fairbanks	Juneau	Others	Total
Administrative Assistant 2	2	2	0	0	4
Asst Dir Emp Se	1	0	0	0	1
College Intern 1	0	0	1	0	1
Education Associate 2	0	0	1	0	1
Education Specialist 2	0	0	1	0	1
Emp Svc Tech 1	13	7	4	16	40
Emp Svc Tech 2	13	8	3	7	31
Emp Svc Tech 3	6	1	1	3	11
Emp/Ui Tech Mgr	0	0	1	0	1
Employment Security Analyst 1	0	0	2	0	2
Employment Security Analyst 2	0	0	1	1	2
Employment Security Analyst 3	1	0	4	2	7
Employment Services Manager 1	0	0	0	7	7
Employment Services Manager 2	1	1	0	2	4
Employment Services Manager 3	1	1	1	1	4
Program Coordinator 1	1	0	2	0	3
Research Analyst 2	0	0	1	0	1
Student Intern 1	1	1	1	2	5
<b>Totals</b>	<b>40</b>	<b>21</b>	<b>24</b>	<b>41</b>	<b>126</b>

**Component Detail All Funds**  
**Department of Labor and Workforce Development**

**Component:** Workforce Services (2761)  
**RDU:** Employment and Training Services (646)

Non-Formula Component

	FY2024 Actuals	FY2025 Enrolled	FY2025 Authorized	FY2025 Management Plan	FY2026 Governor Adjusted Base	FY2026 Governor	FY2025 Management Plan vs FY2026 Governor		
1000 Personal Services	10,553.1	13,085.8	13,085.8	12,919.0	13,256.2	13,256.2	337.2	2.6%	
2000 Travel	149.6	249.2	249.2	295.2	290.7	290.7	-4.5	-1.5%	
3000 Services	4,943.9	5,220.0	5,220.0	5,347.5	5,299.9	5,188.9	-158.6	-3.0%	
4000 Commodities	166.7	273.7	273.7	272.7	248.8	163.8	-108.9	-39.9%	
5000 Capital Outlay	0.0	0.0	0.0	0.0	0.0	0.0	0.0	0.0%	
7000 Grants, Benefits	10,162.0	10,777.0	10,777.0	11,777.0	11,777.0	9,573.0	-2,204.0	-18.7%	
8000 Miscellaneous	0.0	0.0	0.0	0.0	0.0	0.0	0.0	0.0%	
<b>Totals</b>	<b>25,975.3</b>	<b>29,605.7</b>	<b>29,605.7</b>	<b>30,611.4</b>	<b>30,872.6</b>	<b>28,472.6</b>	<b>-2,138.8</b>	<b>-7.0%</b>	
<b>Fund Sources:</b>									
1002 Fed Rcpts (Fed)	21,152.0	19,828.2	19,828.2	20,920.4	21,159.8	21,159.8	239.4	1.1%	
1003 GF/Match (UGF)	1,974.2	1,985.9	1,985.9	1,970.9	1,975.4	1,975.4	4.5	0.2%	
1007 I/A Rcpts (Other)	360.9	4,998.6	4,998.6	4,998.6	5,008.3	2,608.3	-2,390.3	-47.8%	
1049 Trng Bldg (DGF)	642.1	815.5	815.5	760.5	760.5	760.5	0.0	0.0%	
1054 STEP (DGF)	1,845.9	1,944.7	1,944.7	1,944.7	1,952.3	1,952.3	7.6	0.4%	
1108 Stat Desig (Other)	0.2	18.0	18.0	1.5	1.5	1.5	0.0	0.0%	
1151 VoTech Ed (DGF)	0.0	14.8	14.8	14.8	14.8	14.8	0.0	0.0%	
<b>Unrestricted General (UGF)</b>	<b>1,974.2</b>	<b>1,985.9</b>	<b>1,985.9</b>	<b>1,970.9</b>	<b>1,975.4</b>	<b>1,975.4</b>	<b>4.5</b>	<b>0.2%</b>	
<b>Designated General (DGF)</b>	<b>2,488.0</b>	<b>2,775.0</b>	<b>2,775.0</b>	<b>2,720.0</b>	<b>2,727.6</b>	<b>2,727.6</b>	<b>7.6</b>	<b>0.3%</b>	
<b>Other Funds</b>	<b>361.1</b>	<b>5,016.6</b>	<b>5,016.6</b>	<b>5,000.1</b>	<b>5,009.8</b>	<b>2,609.8</b>	<b>-2,390.3</b>	<b>-47.8%</b>	
<b>Federal Funds</b>	<b>21,152.0</b>	<b>19,828.2</b>	<b>19,828.2</b>	<b>20,920.4</b>	<b>21,159.8</b>	<b>21,159.8</b>	<b>239.4</b>	<b>1.1%</b>	
<b>Positions:</b>									
Permanent Full Time	113	118	118	120	120	120	0	0.0%	
Permanent Part Time	0	1	1	0	0	0	0	0.0%	
Non Permanent	7	6	6	6	6	6	0	0.0%	

**Change Record Detail - Multiple Scenarios with Descriptions**  
**Department of Labor and Workforce Development**

**Component:** Workforce Services (2761)  
**RDU:** Employment and Training Services (646)

Scenario/Change Record Title	Trans Type	Totals	Personal Services	Travel	Services	Commodities	Capital Outlay	Grants, Benefits	Miscellaneous	Positions		NP
										PFT	PPT	
***** Changes From FY2025 Enrolled To FY2025 Authorized *****												
<b>FY2025 Enrolled</b>	Enrolled	29,605.7	13,085.8	249.2	5,220.0	273.7	0.0	10,777.0	0.0	118	1	6
1002 Fed Rcpts		19,828.2										
1003 GF/Match		1,985.9										
1007 I/A Rcpts		4,998.6										
1049 Trng Bldg		815.5										
1054 STEP		1,944.7										
1108 Stat Desig		18.0										
1151 VoTech Ed		14.8										
<b>Subtotal</b>		<b>29,605.7</b>	<b>13,085.8</b>	<b>249.2</b>	<b>5,220.0</b>	<b>273.7</b>	<b>0.0</b>	<b>10,777.0</b>	<b>0.0</b>	<b>118</b>	<b>1</b>	<b>6</b>
***** Changes From FY2025 Authorized To FY2025 Management Plan *****												
<b>Transfer Authority to Unemployment Insurance and Division of Employment and Training Services for Division Needs</b>												
	Trout	-86.5	0.0	0.0	-85.5	-1.0	0.0	0.0	0.0	0	0	0
1003 GF/Match		-15.0										
1049 Trng Bldg		-55.0										
1108 Stat Desig		-16.5										
Transfer available authority to Unemployment Insurance and Division of Employment and Training Services to align with division needs for FY2025.												
<b>Transfer Federal Authority from Unemployment Insurance for Division Needs</b>												
	Trin	1,000.0	0.0	0.0	0.0	0.0	0.0	1,000.0	0.0	0	0	0
1002 Fed Rcpts		1,000.0										
Transfer federal authority from Unemployment Insurance to Workforce Services to align with the anticipated increase in demand for grants issued through the Alaska Job Centers.												
<b>Align Authority with FY2025 Travel Plan and to Address Personal Services Needs</b>												
	LIT	0.0	-259.0	46.0	213.0	0.0	0.0	0.0	0.0	0	0	0
Transfer authority from personal services to travel and services to align with the FY2025 Travel Plan and projected services needs.												
<b>Delete Six Expired Intern Positions and Change One Position from Part-Time to Full-Time</b>												
	PosAdj	0.0	0.0	0.0	0.0	0.0	0.0	0.0	0.0	1	-1	-6
Delete six inactive expired intern positions. Workforce Services will create new positions to continue this work.												
Nonpermanent Student Intern 1 (07IN2002), range 6, located in Wasilla												
Nonpermanent Student Intern 1 (07IN2004), range 6, located in Kenai												

**Change Record Detail - Multiple Scenarios with Descriptions**  
**Department of Labor and Workforce Development**

**Component:** Workforce Services (2761)  
**RDU:** Employment and Training Services (646)

Scenario/Change Record Title	Trans Type	Totals	Personal Services	Travel	Services	Commodities	Capital Outlay	Grants, Benefits	Miscellaneous	Positions		NP
										PFT	PPT	
Nonpermanent Student Intern 1 (07IN2005), range 6, located in Fairbanks												
Nonpermanent Student Intern 1 (07IN2006), range 6, located in Juneau												
Nonpermanent Student Intern 1 (07IN2008), range 6, located in Wasilla												
Nonpermanent College Intern 1 (07IN2009), range 8, located in Juneau												
Change time status from part-time to full-time:												
Employment Services Technician 1 (076026), range 14, located in Ketchikan												
<b>Add Six Intern Positions</b>												
	PosAdj	0.0	0.0	0.0	0.0	0.0	0.0	0.0	0.0	0	0	6
Add six intern positions:												
Nonpermanent Student Intern 1 (07#009), range 6, located in Kenai												
Nonpermanent Student Intern 1 (07#010), range 6, located in Fairbanks												
Nonpermanent Student Intern 1 (07#011), range 6, located in Juneau												
Nonpermanent Student Intern 1 (07#008), range 6, located in Wasilla												
Nonpermanent Student Intern 1 (07#012), range 6, located in Anchorage												
Nonpermanent College Intern 1 (07#013), range 8, located in Juneau												
<b>Transfer Employment Services Technician 1 from Unemployment Insurance</b>												
	Trin	92.2	92.2	0.0	0.0	0.0	0.0	0.0	0.0	1	0	0
1002 Fed Rcpts 92.2												
Unemployment Insurance (UI) and Workforce Service (WS) operate in a cycle. As claims for UI decrease, demand for training and workforce services typically increases. The transfer of full-time Employment Services Technician 1 (075764), range 14, located in Fairbanks, moves a vacant position from UI to WS to meet the increased demand for workforce services.												
<b>Subtotal</b>		<b>30,611.4</b>	<b>12,919.0</b>	<b>295.2</b>	<b>5,347.5</b>	<b>272.7</b>	<b>0.0</b>	<b>11,777.0</b>	<b>0.0</b>	<b>120</b>	<b>0</b>	<b>6</b>
***** Changes From FY2025 Management Plan To FY2026 Governor Adjusted Base *****												
<b>FY2026 Salary, Health Insurance, and Retirement Increases</b>												
	SalAdj	261.2	261.2	0.0	0.0	0.0	0.0	0.0	0.0	0	0	0
1002 Fed Rcpts 239.4												
1003 GF/Match 4.5												
1007 I/A Rcpts 9.7												
1054 STEP 7.6												

Salary, health and retirement increases: \$261.2

AlaskaCare increase from \$1908 to \$2030.11 per member per month: \$39.5

**Change Record Detail - Multiple Scenarios with Descriptions**  
**Department of Labor and Workforce Development**

**Component:** Workforce Services (2761)  
**RDU:** Employment and Training Services (646)

Scenario/Change Record Title	Trans Type	Totals	Personal Services	Travel	Services	Commodities	Capital Outlay	Grants, Benefits	Miscellaneous	Positions		NP
										PFT	PPT	
FY2026 APEA (non-law enforcement) 3% cost of living adjustment: \$99.8												
FY2026 PERS rate adjustment from 26.76% to 28.33%: \$121.9												
<b>Align Authority to Address Personal Service Needs</b>												
	LIT	0.0	76.0	-4.5	-47.6	-23.9	0.0	0.0	0.0	0	0	0
Transfer federal authority from travel, services, and commodities to address anticipated personal service needs. The remaining travel, services, and commodities authority is sufficient to meet anticipated expenditures.												
<b>Subtotal</b>		<b>30,872.6</b>	<b>13,256.2</b>	<b>290.7</b>	<b>5,299.9</b>	<b>248.8</b>	<b>0.0</b>	<b>11,777.0</b>	<b>0.0</b>	<b>120</b>	<b>0</b>	<b>6</b>
***** <b>Changes From FY2026 Governor Adjusted Base To FY2026 Governor</b> *****												
<b>Eliminate Authority for Unrealized Partnership with Department of Transportation and Public Facilities</b>												
	Dec	-2,400.0	0.0	0.0	-111.0	-85.0	0.0	-2,204.0	0.0	0	0	0
	1007 I/A Rcpts	-2,400.0										
During FY2025, the division added interagency authority in anticipation of a workforce development partnership with the Department of Transportation and Public Facilities (DOT&PF). The anticipated partnership was not realized, and this interagency authority is not needed.												
The amount DOT&PF received for workforce development was less than originally proposed in the State Transportation Improvement Program, and funding is no longer available for this partnership. The division is referring parties with DOT&PF-related training or workforce development project ideas to DOT&PF for consideration.												
<b>Totals</b>		<b>28,472.6</b>	<b>13,256.2</b>	<b>290.7</b>	<b>5,188.9</b>	<b>163.8</b>	<b>0.0</b>	<b>9,573.0</b>	<b>0.0</b>	<b>120</b>	<b>0</b>	<b>6</b>

**Line Item Detail (1676)**  
**Department of Labor and Workforce Development**  
**Travel**

**Component:** Workforce Services (2761)

Line Number	Line Name		FY2024 Actuals	FY2025 Management Plan	FY2026 Governor
2000	Travel		149.6	295.2	290.7
Object Class	Servicing Agency	Explanation	FY2024 Actuals	FY2025 Management Plan	FY2026 Governor
<b>2000 Travel Detail Totals</b>			<b>149.6</b>	<b>295.2</b>	<b>290.7</b>
2000	In-State Employee Travel	In-state employee travel to support the department's mission.	106.6	245.8	214.9
2002	Out of State Employee Travel	Out of state employee travel.	42.9	49.3	75.7
2006	Other Travel Costs	Cash advance fees.	0.1	0.1	0.1

**Line Item Detail (1676)**  
**Department of Labor and Workforce Development**  
**Services**

**Component:** Workforce Services (2761)

Line Number	Line Name		FY2024 Actuals	FY2025 Management Plan	FY2026 Governor
3000	Services		4,943.9	5,347.5	5,188.9
Object Class	Servicing Agency	Explanation	FY2024 Actuals	FY2025 Management Plan	FY2026 Governor
<b>3000 Services Detail Totals</b>			<b>4,943.9</b>	<b>5,347.5</b>	<b>5,188.9</b>
3000	Education Services	Training, education, and memberships.	62.0	65.0	65.0
3001	Financial Services	Financial services, including auditing and accounting, consulting, insurance, or interest expense.	72.1	74.1	74.1
3003	Information Technology	Information technology, including training, consulting, leases, and software licensing and maintenance.	1,514.2	1,664.0	1,495.1
3004	Telecommunications	Local, long distance, and cellular telephone charges, television, data/network, telecommunication equipment, and other wireless charges from outside vendors.	145.2	140.5	140.5
3006	Delivery Services	Freight, courier services, and postage.	3.6	3.8	3.8
3007	Advertising and Promotions	Advertising for regulation changes, board meetings, recruitments, or other public notices.	150.9	151.0	151.0
3008	Utilities	Electricity, heating fuel, water, sewage, recycling, heating fuel, trash, and confidential document and other disposal services.	5.8	6.1	6.1
3009	Structure/Infrastructure/Land	Room rental for training and seminar space, board or council meetings, or storage and archiving needs.	71.8	75.0	75.0
3010	Equipment/Machinery	Machinery, furniture, and equipment purchase, repairs, maintenance,	307.4	0.0	0.0

**Line Item Detail (1676)**  
**Department of Labor and Workforce Development**  
**Services**

**Component:** Workforce Services (2761)

Object Class	Servicing Agency	Explanation	FY2024 Actuals	FY2025 Management Plan	FY2026 Governor
<b>3000 Services Detail Totals</b>			<b>4,943.9</b>	<b>5,347.5</b>	<b>5,188.9</b>
		rentals, and leases.			
3011	Other Services	Other services including interpreters, consulting, print, copy and graphic services, and safety services.	128.5	118.4	118.4
3012	Inter-Agency Federal Indirect Rate Allocation	Labor - DETS Administration (3116) Indirect cost allocation for division purchasing, federal accounting reports, contracts, fiscal, and mail services provided by the Employment and Training Services Administration component	36.9	43.8	43.8
3012	Inter-Agency Federal Indirect Rate Allocation	Labor - Management Services (335) Indirect cost allocation for departmental purchasing, accounting, reports, personnel consultation and other services provided by Management Services.	70.5	83.6	83.6
3013	Inter-Agency Data Processing Operations Allocation	Labor - Management Services (335) Allocation for Data Processing network and support services.	93.1	244.8	244.8
3016	Inter-Agency Economic Development	E&ED - Department-wide Reimbursable services agreement with the Alaska Commission of Postsecondary Education for working to increase completion of the Free Application for Federal Student Aid (FASFA) rate.	10.0	0.0	0.0
3016	Inter-Agency Economic Development	Labor - Labor Market Information (336) Reimbursable services agreement with Labor Market Information for local labor market information and trends.	97.3	320.0	320.0
3016	Inter-Agency Economic Development	Labor - Unemployment Insurance (2276) Reimbursable service agreement with Unemployment Insurance for release of confidential information.	34.1	0.0	0.0
3016	Inter-Agency Economic Development	Labor - Workforce Investment Board (2659) Reimbursable service agreement with Workforce Investment Board for grants administration support.	12.8	22.0	22.0

**Line Item Detail (1676)**  
**Department of Labor and Workforce Development**  
**Services**

**Component:** Workforce Services (2761)

Object Class		Servicing Agency	Explanation	FY2024 Actuals	FY2025 Management Plan	FY2026 Governor
<b>3000 Services Detail Totals</b>				<b>4,943.9</b>	<b>5,347.5</b>	<b>5,188.9</b>
3016	Inter-Agency Economic Development	Labor - Labor Market Information (336)	Reimbursable services agreement with Labor Market Information to provide State Training and Employment Program evaluation, resident hire research, and other training program evaluation.	97.3	220.0	220.0
3016	Inter-Agency Economic Development	Labor - Unemployment Insurance (2276)	Reimbursable service agreement with Unemployment Insurance for Secure Access Management access.	12.1	20.1	20.1
3017	Inter-Agency Information Technology Non-Telecommunications	Admin - Department-wide	Reimbursable services agreement with the Office of Information Technology for non-telecommunications support, including software and computer services.	372.6	381.2	381.2
3018	Inter-Agency Information Technology Telecommunications	Admin - Department-wide	Reimbursable services agreement with the Office of Information Technology for telecommunication support.	39.6	42.0	42.0
3021	Inter-Agency Mail	Admin - Department-wide	Reimbursable services agreement with Shared Services of Alaska for central mailroom support and services.	1.8	1.8	1.8
3022	Inter-Agency Human Resources	Admin - Department-wide	Reimbursable services agreement with the Division of Personnel and Labor Relations for human resources and personnel services.	73.8	77.7	77.7
3023	Inter-Agency Building Leases	Admin - Department-wide	State-owned facility space rent or other property leases.	1,302.2	1,377.8	1,377.8
3024	Inter-Agency Legal	Law - Department-wide	Reimbursable services agreement with the Department of Law for legal services.	12.8	12.8	12.8
3026	Inter-Agency Insurance	Admin - Department-wide	Reimbursable services agreement with the Division of Risk	7.6	10.3	10.3

**Line Item Detail (1676)**  
**Department of Labor and Workforce Development**  
**Services**

**Component:** Workforce Services (2761)

Object Class	Servicing Agency	Explanation	FY2024 Actuals	FY2025 Management Plan	FY2026 Governor
<b>3000 Services Detail Totals</b>			<b>4,943.9</b>	<b>5,347.5</b>	<b>5,188.9</b>
		Management for risk management insurance charges for leased buildings, repossessed properties, public official bonds, and overhead.			
3027	Inter-Agency Financial	Admin - Department-wide			
		Reimbursable services agreement with the Division of Finance for system services for State accounting and payroll (IRIS), and reporting (ALDER) systems.	88.7	96.3	96.3
3029	Inter-Agency Education/Training	Labor - Workforce Investment Board (2659)			
		Reimbursable services agreement with Workforce Investment Board for oversight under AS 23.15.580(f)	80.7	80.7	80.7
3031	Inter-Agency Construction				
		Federally funded building renovation to add an office for the federal Veterans' representative's within the department's Eagle Street facility.	23.8	0.0	0.0
3037	State Equipment Fleet	Trans - Department-wide			
		State equipment fleet fixed cost services for equipment replacement, maintenance and fuel, both allowable and non-allowable.	13.4	13.4	19.0
3038	Inter-Agency Management/Consulting	Admin - Department-wide			
		Reimbursable services agreement with Shared Services of Alaska for travel and accounts payable services.	1.3	1.3	6.0

**Line Item Detail (1676)**  
**Department of Labor and Workforce Development**  
**Commodities**

**Component:** Workforce Services (2761)

Line Number	Line Name		FY2024 Actuals	FY2025 Management Plan	FY2026 Governor
4000	Commodities		166.7	272.7	163.8
Object Class	Servicing Agency	Explanation	FY2024 Actuals	FY2025 Management Plan	FY2026 Governor
<b>4000 Commodities Detail Totals</b>			<b>166.7</b>	<b>272.7</b>	<b>163.8</b>
4000	Business	General business supplies such as office consumables and computer equipment.	151.0	256.9	151.1
4002	Household/Institutional	Office supplies, supplies and consumables for public meetings, and cleaning products.	11.6	12.3	12.3
4004	Safety	Safety gear and protective clothing.	0.7	0.0	0.0
4006	Signs and Markers	Signs and markers.	2.0	2.0	0.0
4015	Parts and Supplies	Parts and supplies.	1.2	1.2	0.0
4020	Equipment Fuel	Fuel for equipment.	0.2	0.3	0.4

**Line Item Detail (1676)**  
**Department of Labor and Workforce Development**  
**Grants, Benefits**

**Component:** Workforce Services (2761)

Line Number	Line Name		FY2024 Actuals	FY2025 Management Plan	FY2026 Governor
7000	Grants, Benefits		10,162.0	11,777.0	9,573.0
Object Class	Servicing Agency	Explanation	FY2024 Actuals	FY2025 Management Plan	FY2026 Governor
<b>7000 Grants, Benefits Detail Totals</b>			<b>10,162.0</b>	<b>11,777.0</b>	<b>9,573.0</b>
7001	Grants	Operations grants for employment training programs to include the Workforce Innovation and Opportunity Act, State Training and Employment Program, Technical and Vocational Education Program, Trade Adjustment Assistance program, Senior Community Service Employment Program, Adult Basic Education, and American Apprenticeship Initiative	1,930.6	1,966.2	1,577.1
7002	Benefits	Individual training accounts for clients to cover costs such as tuition, tools and supplies, lodging and meals, and relocation assistance to eligible individuals under specific employment programs	4,879.1	6,267.5	4,623.1
7003	Sub-Recipient Pass-Through Grants	Grants to various state and non-state agency recipients to cover training costs for clients.	720.4	720.4	550.0
7003	Sub-Recipient Pass-Through Grants	Correct - Department-wide Adult Basic Education grant to Department of Corrections	199.4	50.0	50.0
7003	Sub-Recipient Pass-Through Grants	Adult Basic Education grant to the University of Alaska, Kenai.	291.8	219.1	219.0
7003	Sub-Recipient Pass-Through Grants	Adult Basic Education grant, Aleutian-Pribilof Region.	152.6	264.4	264.4
7003	Sub-Recipient Pass-Through Grants	Adult Basic Education grant, Bristol Bay Region.	0.0	141.0	141.0

**Line Item Detail (1676)**  
**Department of Labor and Workforce Development**  
**Grants, Benefits**

**Component:** Workforce Services (2761)

Object Class	Servicing Agency	Explanation	FY2024 Actuals	FY2025 Management Plan	FY2026 Governor
<b>7000 Grants, Benefits Detail Totals</b>			<b>10,162.0</b>	<b>11,777.0</b>	<b>9,573.0</b>
7003	Sub-Recipient Pass-Through Grants	Adult Basic Education grant, Prince William Sound Region.	74.1	132.2	132.2
7003	Sub-Recipient Pass-Through Grants	Adult Basic Education grant, Anchorage Region.	432.0	504.2	504.2
7003	Sub-Recipient Pass-Through Grants	Adult Basic Education grant, Fairbanks Region.	396.1	379.9	379.9
7003	Sub-Recipient Pass-Through Grants	Adult Basic Education grant, Kodiak Region.	135.9	145.5	145.5
7003	Sub-Recipient Pass-Through Grants	Adult Basic Education grant, Alaska Literacy Program IELCE.	202.4	167.3	167.3
7003	Sub-Recipient Pass-Through Grants	Adult Basic Education grant, Matanuska-Susitna Region.	226.4	243.3	243.3
7003	Sub-Recipient Pass-Through Grants	Adult Basic Education grant, Nome Region.	182.7	191.5	191.5
7003	Sub-Recipient Pass-Through Grants	Adult Basic Education grant, Northwest Arctic Region.	151.6	153.2	153.2
7003	Sub-Recipient Pass-Through Grants	Adult Basic Education grant, Southeast Region.	186.9	231.3	231.3

**Revenue Detail (1681)**  
**Department of Labor and Workforce Development**

**Component:** Workforce Services (2761)

Revenue Type (OMB Fund Code) Revenue Source	Component	Comment	FY2024 Actuals	FY2025 Management Plan	FY2026 Governor
<b>5002 Fed Rcpts (1002 Fed Rcpts)</b>			<b>21,152.0</b>	<b>20,920.4</b>	<b>21,159.8</b>
5002 Federal General Government - Miscellaneous Grants		Various federal grants including, but not limited to, Workforce Innovation and Opportunity Act funds for adults and dislocated workers, Wagner-Peyser Act funds for basic labor exchange activities and Alaska Job Center Network operations, Trade Adjustment Assistance funds for training and reemployment benefits, Local Veterans' Employment Representative and Disabled Veterans' Outreach Program funds to assist military veterans in transition to employment, and Ticket to Work funds for assisting persons with disabilities in employment services Adult Education and Literacy grant from U.S. Department of Education for Adult Basic Education.	19,918.1	19,706.3	19,945.7
5004 Federal Education - Miscellaneous Grants		Adult Education and Literacy grant from U.S. Department of Education for Adult Basic Education.	1,233.9	1,214.1	1,214.1
<b>5007 I/A Rcpts (1007 I/A Rcpts)</b>			<b>360.9</b>	<b>4,998.6</b>	<b>2,608.3</b>
5301 Inter-Agency Receipts	E&ED - Department-wide	Reimbursable services agreement with Department of Education and Early Development to administer a career guide program in the Bethel and Fairbanks areas.	0.0	315.0	315.0
5301 Inter-Agency Receipts	H&SS - Department-wide	Reimbursable services agreement for infrastructure funding for One-Stop centers.	0.5	47.7	47.7
5301 Inter-Agency Receipts	Labor - Client Services (1828)	Reimbursable services agreement	0.2	21.6	21.6

**Revenue Detail (1681)**  
**Department of Labor and Workforce Development**

**Component:** Workforce Services (2761)

Revenue Type (OMB Fund Code) Revenue Source	Component	Comment	FY2024 Actuals	FY2025 Management Plan	FY2026 Governor
5301 Inter-Agency Receipts	Labor - Unemployment Insurance (2276)	for infrastructure funding for One-Stop centers. Reimbursable services agreement with Unemployment Insurance (UI) for re-employment services provided to UI claimants.	360.2	476.0	476.0
5301 Inter-Agency Receipts	Labor - Workforce Services (2761)	Inter-agency receipts for service agreements not yet finalized.	0.0	1,738.3	1,748.0
5301 Inter-Agency Receipts	Trans - Department-wide	Reimbursable services agreement with Department of Transportation and Public Facilities to administer Infrastructure Investment and Jobs Act (IIJA) training funds.	0.0	2,400.0	0.0
<b>5108 Stat Desig (1108 Stat Desig)</b>			<b>0.2</b>	<b>1.5</b>	<b>1.5</b>
5201 Statutory Dsgntd Prgrm Rcpts Pblc Prtctn - Permits and Fees		Revenue from the Performance Assessment Network agreement to reimburse staff serving as test proctors in the oversight of the web-based assessment testing program according to Transportation Security Administration protocols: and program receipt collections from one-stop partners.	0.2	1.5	1.5
<b>6049 Trng Bldg (1049 Trng Bldg)</b>			<b>733.2</b>	<b>760.5</b>	<b>760.5</b>
6520 Training/Building Fund Pblc Prtctn - Misc Fines/Forfeitures		The Training and Building fund established under AS 23.20.130(d) is derived through the assessment of interest and penalties on unemployment insurance taxes collected from Alaskan employers for past due contributions, failure to file reports, and for nonpayment of contributions.	733.2	760.5	760.5

**Revenue Detail (1681)**  
**Department of Labor and Workforce Development**

**Component:** Workforce Services (2761)

Revenue Type (OMB Fund Code) Revenue Source	Component	Comment	FY2024 Actuals	FY2025 Management Plan	FY2026 Governor
<b>6054 Empl Trng (1054 STEP)</b>			<b>1,845.9</b>	<b>1,944.7</b>	<b>1,952.3</b>
6560 State Training and Employment Program - Contributions		State Training and Employment Program (AS 23.15.620) provides funds for grants to employment and training entities for services to Alaskans.	1,845.9	1,944.7	1,952.3
<b>6151 VoTech Ed (1151 VoTech Ed)</b>			<b>0.0</b>	<b>14.8</b>	<b>14.8</b>
6775 Technical Vocational Education Program - Contributions		Technical and Vocational Education Program Account (AS 23.15.830) provides funds to support technical and vocational training programs across Alaska.	0.0	14.8	14.8

**Inter-Agency Services (1682)**  
**Department of Labor and Workforce Development**

**Component:** Workforce Services (2761)

	FY2024 Actuals	FY2025 Management Plan	FY2026 Governor
<b>Component Totals</b>	<b>2,658.0</b>	<b>3,099.6</b>	<b>3,109.9</b>
With Department of Labor and Workforce Development	534.8	1,035.0	1,035.0
With Department of Education and Early Development	10.0	0.0	0.0
With Department of Administration	1,887.6	1,988.4	1,993.1
With Department of Law	12.8	12.8	12.8
With Department of Transportation and Public Facilities	13.4	13.4	19.0
With Department of Corrections	199.4	50.0	50.0

Object Class	Servicing Agency	Explanation	FY2024 Actuals	FY2025 Management Plan	FY2026 Governor
3012 Inter-Agency Federal Indirect Rate Allocation	Labor - DETS Administration (3116)	Indirect cost allocation for division purchasing, federal accounting reports, contracts, fiscal, and mail services provided by the Employment and Training Services Administration component	36.9	43.8	43.8
3012 Inter-Agency Federal Indirect Rate Allocation	Labor - Management Services (335)	Indirect cost allocation for departmental purchasing, accounting, reports, personnel consultation and other services provided by Management Services.	70.5	83.6	83.6
3013 Inter-Agency Data Processing Operations Allocation	Labor - Management Services (335)	Allocation for Data Processing network and support services.	93.1	244.8	244.8
3016 Inter-Agency Economic Development	E&ED - Department-wide	Reimbursable services agreement with the Alaska Commission of Postsecondary Education for working to increase completion of the Free Application for Federal Student Aid (FASFA) rate.	10.0	0.0	0.0
3016 Inter-Agency Economic Development	Labor - Labor Market Information (336)	Reimbursable services agreement with Labor Market Information for local labor market information and trends.	97.3	320.0	320.0

**Inter-Agency Services (1682)**  
**Department of Labor and Workforce Development**

**Component:** Workforce Services (2761)

Object Class		Servicing Agency	Explanation	FY2024 Actuals	FY2025 Management Plan	FY2026 Governor
3016	Inter-Agency Economic Development	Labor - Unemployment Insurance (2276)	Reimbursable service agreement with Unemployment Insurance for release of confidential information.	34.1	0.0	0.0
3016	Inter-Agency Economic Development	Labor - Workforce Investment Board (2659)	Reimbursable service agreement with Workforce Investment Board for grants administration support.	12.8	22.0	22.0
3016	Inter-Agency Economic Development	Labor - Labor Market Information (336)	Reimbursable services agreement with Labor Market Information to provide State Training and Employment Program evaluation, resident hire research, and other training program evaluation.	97.3	220.0	220.0
3016	Inter-Agency Economic Development	Labor - Unemployment Insurance (2276)	Reimbursable service agreement with Unemployment Insurance for Secure Access Management access.	12.1	20.1	20.1
3017	Inter-Agency Information Technology Non-Telecommunications	Admin - Department-wide	Reimbursable services agreement with the Office of Information Technology for non-telecommunications support, including software and computer services.	372.6	381.2	381.2
3018	Inter-Agency Information Technology Telecommunications	Admin - Department-wide	Reimbursable services agreement with the Office of Information Technology for telecommunication support.	39.6	42.0	42.0
3021	Inter-Agency Mail	Admin - Department-wide	Reimbursable services agreement with Shared Services of Alaska for central mailroom support and services.	1.8	1.8	1.8
3022	Inter-Agency Human Resources	Admin - Department-wide	Reimbursable services agreement with the Division of Personnel and Labor Relations for human resources and personnel services.	73.8	77.7	77.7
3023	Inter-Agency Building Leases	Admin - Department-wide	State-owned facility space rent or other property leases.	1,302.2	1,377.8	1,377.8
3024	Inter-Agency Legal	Law - Department-wide	Reimbursable services agreement	12.8	12.8	12.8

**Inter-Agency Services (1682)**  
**Department of Labor and Workforce Development**

**Component:** Workforce Services (2761)

<b>Object Class</b>	<b>Servicing Agency</b>	<b>Explanation</b>	<b>FY2024 Actuals</b>	<b>FY2025 Management Plan</b>	<b>FY2026 Governor</b>
3026	Inter-Agency Insurance	Admin - Department-wide			
		with the Department of Law for legal services.			
		Reimbursable services agreement with the Division of Risk Management for risk management insurance charges for leased buildings, repossessed properties, public official bonds, and overhead.	7.6	10.3	10.3
3027	Inter-Agency Financial	Admin - Department-wide			
		Reimbursable services agreement with the Division of Finance for system services for State accounting and payroll (IRIS), and reporting (ALDER) systems.	88.7	96.3	96.3
3029	Inter-Agency Education/Training	Labor - Workforce Investment Board (2659)			
		Reimbursable services agreement with Workforce Investment Board for oversight under AS 23.15.580(f)	80.7	80.7	80.7
3037	State Equipment Fleet	Trans - Department-wide			
		State equipment fleet fixed cost services for equipment replacement, maintenance and fuel, both allowable and non-allowable.	13.4	13.4	19.0
3038	Inter-Agency Management/Consulting	Admin - Department-wide			
		Reimbursable services agreement with Shared Services of Alaska for travel and accounts payable services.	1.3	1.3	6.0
7003	Sub-Recipient Pass-Through Grants	Correct - Department-wide			
		Adult Basic Education grant to Department of Corrections	199.4	50.0	50.0

**Personal Services Expenditure Detail**  
**Department of Labor and Workforce Development**

**Scenario:** FY2026 Governor (22363)  
**Component:** Workforce Services (2761)  
**RDU:** Employment and Training Services (646)

PCN	Job Class Title	Time Status	Retire Code	Barg Unit	Location	Salary Sched	Range / Step	Comp Months	Split / Count	Annual Salaries	COLA	Premium Pay	Annual Benefits	Total Costs	UGF Amount
051615	Education Specialist 2	FT	A	SS	Juneau	205	21J	12.0		110,365	4,662	0	69,569	184,596	92,298
07?008	Student Intern 1	NP	N	GP	Wasilla	200	6A	12.0		31,239	0	0	3,180	34,419	0
07?009	Student Intern 1	NP	N	GP	Kenai	200	6A	12.0		31,239	0	0	3,180	34,419	0
07?010	Student Intern 1	NP	N	GP	Fairbanks	203	6A	12.0		32,175	0	0	3,275	35,450	0
07?011	Student Intern 1	NP	N	GP	Juneau	205	6A	12.0		32,799	0	0	3,339	36,138	0
07?012	Student Intern 1	NP	N	GP	Anchorage	200	6A	12.0		31,239	0	0	3,180	34,419	0
07?013	College Intern 1	NP	N	GP	Juneau	205	8A	12.0		36,738	0	0	3,740	40,478	0
071038	Emp Svc Tech 1	FT	A	GP	Juneau	205	14C / D	12.0		58,113	0	0	42,792	100,905	0
075011	Emp Svc Tech 1	FT	A	GP	Juneau	205	14A	12.0		52,982	0	0	40,698	93,680	0
075059	Emp Svc Tech 1	FT	A	GP	Wasilla	200	14A / B	12.0		51,739	0	0	40,191	91,930	0
075115	Employment Services Manager 1	FT	A	GP	Valdez	211	16E / F	12.0		76,208	0	0	50,179	126,387	0
075123	Employment Security Analyst 3	FT	A	SS	Juneau	205	18N	12.0		102,835	4,344	0	66,495	173,674	0
075124	Emp Svc Tech 1	FT	A	GP	Fairbanks	203	14D / E	12.0		58,344	0	0	42,887	101,231	0
075125	Emp Svc Tech 1	FT	A	GP	Anchorage	200	14A	12.0		50,466	0	0	39,671	90,137	0
075132	Emp Svc Tech 3	FT	A	SS	Anchorage	200	16D / E	12.0		70,965	2,998	0	53,486	127,449	0
075134	Emp Svc Tech 1	FT	A	GP	Wasilla	200	14B / C	12.0		52,241	0	0	40,395	92,636	0
075135	Administrative Assistant 2	FT	A	GP	Anchorage	200	14E / F	12.0		59,633	0	0	43,413	103,046	0
075143	Employment Services Manager 1	FT	A	SS	Kodiak	211	16A / B	12.0		72,134	3,047	0	53,963	129,144	0
075147	Employment Services Manager 3	FT	A	SS	Anchorage	200	20A	12.0		83,470	3,526	0	58,590	145,586	0
075163	Employment Security Analyst 3	FT	A	SS	Kenai	200	18C / D	12.0		79,754	3,369	0	57,074	140,197	0
075167	Emp Svc Tech 2	FT	A	GP	Wasilla	200	15D / E	12.0		61,055	0	0	43,993	105,048	0
075177	Employment Services Manager 2	FT	A	SS	Ketchikan	200	18C / D	12.0		79,914	3,376	0	57,139	140,429	0
075178	Employment Security Analyst 2	FT	A	GG	Juneau	205	17A / B	12.0		66,909	0	0	46,383	113,292	0
075182	Employment Services Manager 1	FT	A	SS	Bethel	250	16A / B	12.0		98,055	4,142	0	64,544	166,741	0
075211	Emp Svc Tech 2	FT	N	GP	Fairbanks	203	15A	12.0		55,575	0	0	26,012	81,587	0
075214	Emp Svc Tech 1	FT	A	GP	Wasilla	200	14A / B	12.0		51,682	0	0	40,167	91,849	0
075239	Emp Svc Tech 1	FT	A	GP	Anchorage	200	14A / B	12.0		51,925	0	0	40,266	92,191	0
075243	Emp Svc Tech 1	FT	A	GP	Kenai	200	14G / J	12.0		64,355	0	0	45,340	109,695	0
075315	Administrative Assistant 2	FT	A	GP	Fairbanks	203	14A / B	12.0		53,084	0	0	40,740	93,824	0
075345	Emp Svc Tech 3	FT	A	SS	Anchorage	200	16A	12.0		63,461	2,681	0	50,423	116,565	0
075347	Emp Svc Tech 1	FT	A	GP	Anchorage	200	14A / B	12.0		51,467	0	0	40,079	91,546	0

Note: If a position is split, an asterisk (\*) will appear in the Split/Count column. If the split position is also counted in the component, two asterisks (\*\*) will appear in this column. [No valid job title] appearing in the Job Class Title indicates that the PCN has an invalid class code or invalid range for the class code effective date of this scenario.

**Personal Services Expenditure Detail**  
**Department of Labor and Workforce Development**

**Scenario:** FY2026 Governor (22363)  
**Component:** Workforce Services (2761)  
**RDU:** Employment and Training Services (646)

PCN	Job Class Title	Time Status	Retire Code	Barg Unit	Location	Salary Sched	Range / Step	Comp Months	Split / Count	Annual Salaries	COLA	Premium Pay	Annual Benefits	Total Costs	UGF Amount
075355	Emp/Ui Tech Mgr	FT	A	SS	Juneau	205	20S	12.0		137,821	5,822	0	80,776	224,419	0
075375	Emp Svc Tech 1	FT	A	GP	Bethel	150	14A / B	12.0		78,482	0	0	51,107	129,589	0
075411	Emp Svc Tech 1	FT	A	GP	Anchorage	200	14E / F	12.0		60,066	0	0	43,590	103,656	0
075438	Emp Svc Tech 1	FT	A	GP	Anchorage	200	14C / D	12.0		54,379	0	0	41,268	95,647	0
075448	Emp Svc Tech 3	FT	A	SS	Kenai	200	16O / P	12.0		88,481	3,738	0	60,636	152,855	0
075450	Emp Svc Tech 1	FT	A	GP	Fairbanks	203	14A / B	12.0		53,479	0	0	40,901	94,380	0
075453	Emp Svc Tech 1	FT	A	GP	Anchorage	200	14F / G	12.0		61,264	0	0	44,079	105,343	0
075479	Program Coordinator 1	FT	A	GP	Anchorage	200	18F / G	12.0		81,764	0	0	52,447	134,211	0
075521	Emp Svc Tech 1	FT	A	GP	Anchorage	200	14B / C	12.0		53,306	0	0	40,830	94,136	0
075522	Emp Svc Tech 2	FT	A	GP	Anchorage	200	15A	12.0		53,957	0	0	41,096	95,053	0
075526	Emp Svc Tech 3	FT	A	SS	Juneau	205	16A / B	12.0		67,704	2,860	0	52,155	122,719	0
075583	Employment Security Analyst 3	FT	A	GP	Anchorage	200	18E / F	12.0		78,584	0	0	51,149	129,733	0
075597	Employment Services Manager 2	FT	A	SS	Wasilla	200	18J	12.0		86,174	3,641	0	59,694	149,509	0
075600	Employment Security Analyst 3	FT	A	SS	Juneau	205	18A	12.0		76,565	3,235	0	55,772	135,572	0
075603	Emp Svc Tech 2	FT	A	GP	Fairbanks	203	15A / B	12.0		55,923	0	0	41,898	97,821	0
075637	Emp Svc Tech 1	FT	A	GP	Homer	200	14A / B	12.0		52,139	0	0	40,354	92,493	0
075640	Emp Svc Tech 1	FT	A	GP	Juneau	205	14A	12.0		52,982	0	0	40,698	93,680	0
075648	Employment Security Analyst 1	FT	A	GP	Juneau	205	15O / P	12.0		85,915	0	0	54,141	140,056	0
075655	Program Coordinator 1	FT	A	GP	Juneau	205	18E / F	12.0		81,843	0	0	52,479	134,322	0
075661	Emp Svc Tech 1	FT	A	GP	Anchorage	200	14A	12.0		50,466	0	0	39,671	90,137	0
075662	Asst Dir Emp Se	FT	A	SS	Anchorage	200	22K	12.0		116,064	4,903	0	71,895	192,862	0
075693	Emp Svc Tech 3	FT	A	SS	Anchorage	200	16J / K	12.0		77,014	3,254	0	55,955	136,223	0
075699	Emp Svc Tech 2	FT	A	GP	Anchorage	200	15A	12.0		53,957	0	0	41,096	95,053	0
075703	Emp Svc Tech 1	FT	A	GP	Anchorage	200	14A	12.0		50,466	0	0	39,671	90,137	0
075706	Emp Svc Tech 2	FT	A	GP	Fairbanks	203	15J / K	12.0		72,803	0	0	48,789	121,592	0
075708	Emp Svc Tech 1	FT	A	GP	Fairbanks	203	14C / D	12.0		56,844	0	0	42,274	99,118	0
075726	Emp Svc Tech 2	FT	A	GP	Anchorage	200	15C / D	12.0		60,066	0	0	43,590	103,656	0
075742	Employment Security Analyst 1	FT	A	GP	Juneau	205	15A / B	12.0		58,507	0	0	42,953	101,460	0
075757	Administrative Assistant 2	FT	A	GP	Anchorage	200	14A / B	12.0		51,724	0	0	40,184	91,908	0
075764	Emp Svc Tech 1	FT	A	GP	Fairbanks	203	14B / C	12.0		54,292	0	0	41,233	95,525	0
075776	Emp Svc Tech 1	FT	A	GP	Fairbanks	203	14D / E	12.0		57,883	0	0	42,698	100,581	0
075778	Emp Svc Tech 1	FT	A	GP	Juneau	205	14A	12.0		52,982	0	0	40,698	93,680	0
075788	Emp Svc Tech 3	FT	A	SS	Anchorage	200	16K	12.0		77,750	3,285	0	56,255	137,290	0
075794	Emp Svc Tech 1	FT	A	GP	Kenai	200	14C / D	12.0		55,004	0	0	41,523	96,527	0

Note: If a position is split, an asterisk (\*) will appear in the Split/Count column. If the split position is also counted in the component, two asterisks (\*\*) will appear in this column. [No valid job title] appearing in the Job Class Title indicates that the PCN has an invalid class code or invalid range for the class code effective date of this scenario.

**Personal Services Expenditure Detail**  
**Department of Labor and Workforce Development**

**Scenario:** FY2026 Governor (22363)  
**Component:** Workforce Services (2761)  
**RDU:** Employment and Training Services (646)

PCN	Job Class Title	Time Status	Retire Code	Barg Unit	Location	Salary Sched	Range / Step	Comp Months	Split / Count	Annual Salaries	COLA	Premium Pay	Annual Benefits	Total Costs	UGF Amount
075797	Emp Svc Tech 2	FT	A	GP	Anchorage	200	15N	12.0		79,034	0	0	51,332	130,366	0
075804	Employment Security Analyst 2	FT	A	GP	Kenai	200	17A / B	12.0		63,239	0	0	44,885	108,124	0
075805	Employment Services Manager 1	FT	A	SS	Homer	200	16K / L	12.0		78,988	3,337	0	56,761	139,086	0
075814	Emp Svc Tech 1	FT	A	GP	Kenai	200	14A / B	12.0		69,176	0	0	47,308	116,484	0
075815	Emp Svc Tech 2	FT	A	GP	Ketchikan	200	15D / E	12.0		60,540	0	0	43,783	104,323	0
075824	Emp Svc Tech 1	FT	A	GP	Anchorage	200	14A	12.0		50,466	0	0	39,671	90,137	0
075831	Emp Svc Tech 2	FT	A	GP	Anchorage	200	15A / B	12.0		54,768	0	0	41,427	96,195	0
075850	Emp Svc Tech 2	FT	A	GP	Anchorage	200	15A	12.0		53,957	0	0	41,096	95,053	0
075864	Emp Svc Tech 2	FT	A	GP	Kenai	200	15E / F	12.0		64,253	0	0	45,299	109,552	0
075866	Employment Services Manager 1	FT	A	GP	Dillingham	237	16G	12.0		97,988	0	0	59,069	157,057	0
075870	Emp Svc Tech 1	FT	A	GP	Bethel	250	14A / B	12.0		77,308	0	0	50,628	127,936	0
075873	Emp Svc Tech 1	FT	A	GP	Fairbanks	203	14M	12.0		73,340	0	0	49,008	122,348	0
075897	Emp Svc Tech 1	FT	A	GP	Fairbanks	203	14N / O	12.0		76,131	0	0	50,147	126,278	0
075912	Emp Svc Tech 1	FT	A	GP	Kodiak	211	14B / C	12.0		57,981	0	0	42,738	100,719	0
075914	Emp Svc Tech 1	FT	A	GP	Kenai	200	14F / G	12.0		60,846	0	0	43,908	104,754	0
075916	Employment Services Manager 3	FT	A	SS	Kenai	200	20K / L	12.0		103,448	4,370	0	66,745	174,563	0
075925	Employment Services Manager 3	FT	A	SS	Juneau	205	20A / B	12.0		90,058	3,805	0	61,280	155,143	0
075926	Emp Svc Tech 1	FT	A	GP	Wasilla	200	14C / D	12.0		55,900	0	0	41,889	97,789	0
075928	Employment Security Analyst 3	FT	A	GP	Juneau	205	18J / K	12.0		90,114	0	0	55,855	145,969	0
075943	Emp Svc Tech 2	FT	A	GP	Juneau	205	15A / B	12.0		58,578	0	0	42,982	101,560	0
075946	Emp Svc Tech 2	FT	A	GP	Anchorage	200	15G	12.0		66,788	0	0	46,334	113,122	0
075947	Emp Svc Tech 1	FT	A	GP	Anchorage	200	14A / B	12.0		51,753	0	0	40,196	91,949	0
075953	Education Associate 2	FT	A	GP	Juneau	205	15M / N	12.0		81,018	0	0	52,142	133,160	99,870
075954	Emp Svc Tech 2	FT	A	GP	Juneau	205	15A	12.0		56,648	0	0	42,194	98,842	0
075956	Emp Svc Tech 2	FT	A	GP	Ketchikan	200	15A	12.0		53,957	0	0	41,096	95,053	0
075960	Employment Security Analyst 3	FT	A	GP	Juneau	205	18B / C	12.0		74,928	0	0	49,656	124,584	0
075964	Emp Svc Tech 1	FT	A	GP	Kenai	200	14A	12.0		50,466	0	0	39,671	90,137	0
075987	Emp Svc Tech 2	FT	A	GP	Anchorage	200	15A / B	12.0		54,379	0	0	41,268	95,647	0
075989	Emp Svc Tech 3	FT	A	SS	Wasilla	200	16C / D	12.0		70,245	2,968	0	53,192	126,405	0
075998	Employment Security Analyst 3	FT	A	SS	Kenai	200	18N / O	12.0		103,294	4,364	0	66,683	174,341	0
076005	Emp Svc Tech 1	FT	A	GP	Anchorage	200	14A / B	12.0		51,610	0	0	40,138	91,748	0

Note: If a position is split, an asterisk (\*) will appear in the Split/Count column. If the split position is also counted in the component, two asterisks (\*\*) will appear in this column. [No valid job title] appearing in the Job Class Title indicates that the PCN has an invalid class code or invalid range for the class code effective date of this scenario.

**Personal Services Expenditure Detail**  
**Department of Labor and Workforce Development**

**Scenario:** FY2026 Governor (22363)  
**Component:** Workforce Services (2761)  
**RDU:** Employment and Training Services (646)

PCN	Job Class Title	Time Status	Retire Code	Barg Unit	Location	Salary Sched	Range / Step	Comp Months	Split / Count	Annual Salaries	COLA	Premium Pay	Annual Benefits	Total Costs	UGF Amount
076006	Emp Svc Tech 1	FT	A	GP	Kenai	200	14A / B	12.0		51,610	0	0	40,138	91,748	0
076007	Emp Svc Tech 2	FT	A	GP	Kenai	200	15A / B	12.0		55,140	0	0	41,579	96,719	0
076008	Emp Svc Tech 3	FT	A	SS	Anchorage	200	16C / D	12.0		70,204	2,966	0	53,175	126,345	0
076009	Emp Svc Tech 2	FT	A	GP	Anchorage	200	15A	12.0		53,957	0	0	41,096	95,053	0
076010	Emp Svc Tech 2	FT	A	GP	Anchorage	200	15C / D	12.0		59,344	0	0	43,295	102,639	0
076011	Emp Svc Tech 2	FT	A	GP	Wasilla	200	15N	12.0		79,034	0	0	51,332	130,366	0
076012	Emp Svc Tech 3	FT	A	SS	Anchorage	200	16A / B	12.0		64,820	2,738	0	50,977	118,535	0
076026	Emp Svc Tech 2	FT	A	GP	Anchorage	200	15A / B	12.0		55,224	0	0	41,613	96,837	0
076028	Emp Svc Tech 2	FT	A	GP	Anchorage	200	15A	12.0		53,957	0	0	41,096	95,053	0
076033	Emp Svc Tech 2	FT	A	GP	Anchorage	200	15A	12.0		53,957	0	0	41,096	95,053	0
076035	Emp Svc Tech 2	FT	A	GP	Fairbanks	203	15L / M	12.0		78,839	0	0	51,253	130,092	0
213028	Emp Svc Tech 2	FT	A	GP	Wasilla	200	15A	12.0		53,957	0	0	41,096	95,053	0
213029	Emp Svc Tech 1	FT	A	GP	Anchorage	200	14M / N	12.0		71,678	0	0	48,330	120,008	0
213035	Employment Services Manager 1	FT	A	GP	Sitka	205	16A / B	12.0		62,481	0	0	44,575	107,056	0
213039	Emp Svc Tech 2	FT	A	GP	Fairbanks	203	15J	12.0		71,604	0	0	48,299	119,903	0
213040	Program Coordinator 1	FT	A	SS	Juneau	205	18J / K	12.0		94,719	4,001	0	63,182	161,902	0
213043	Employment Services Manager 2	FT	A	SS	Anchorage	200	18D / E	12.0		81,623	3,448	0	57,836	142,907	0
213052	Emp Svc Tech 1	FT	A	GP	Wasilla	200	14A / B	12.0		51,381	0	0	40,044	91,425	0
213055	Emp Svc Tech 2	FT	A	GP	Fairbanks	203	15C / D	12.0		60,868	0	0	43,917	104,785	0
213071	Emp Svc Tech 1	FT	A	GP	Kenai	200	14A / B	12.0		51,610	0	0	40,138	91,748	0
213082	Employment Services Manager 1	FT	A	GP	Nome	237	16B / C	12.0		82,741	0	0	52,846	135,587	0
213085	Emp Svc Tech 3	FT	A	SS	Kenai	200	16L	12.0		80,267	3,391	0	57,283	140,941	0
213086	Research Analyst 2	FT	A	GP	Juneau	205	16A / B	12.0		62,010	0	0	44,383	106,393	0
213103	Emp Svc Tech 2	FT	A	GP	Juneau	205	15A	12.0		56,648	0	0	42,194	98,842	0
213113	Employment Services Manager 3	FT	A	SS	Fairbanks	203	20N	12.0		115,211	4,867	0	71,547	191,625	0
213115	Administrative Assistant 2	FT	A	GP	Fairbanks	203	14N	12.0		75,719	0	0	49,979	125,698	0
213116	Emp Svc Tech 3	FT	A	SS	Fairbanks	203	16D / E	12.0		74,855	3,162	0	55,074	133,091	0
213117	Emp Svc Tech 2	FT	A	GP	Fairbanks	203	15M / N	12.0		80,555	0	0	51,953	132,508	0
213119	Employment Services Manager 2	FT	A	SS	Fairbanks	203	18E	12.0		85,966	3,632	0	59,609	149,207	0
213120	Emp Svc Tech 2	FT	A	GP	Fairbanks	203	15A / B	12.0		56,618	0	0	42,182	98,800	0

Note: If a position is split, an asterisk (\*) will appear in the Split/Count column. If the split position is also counted in the component, two asterisks (\*\*) will appear in this column. [No valid job title] appearing in the Job Class Title indicates that the PCN has an invalid class code or invalid range for the class code effective date of this scenario.

**Personal Services Expenditure Detail**  
**Department of Labor and Workforce Development**

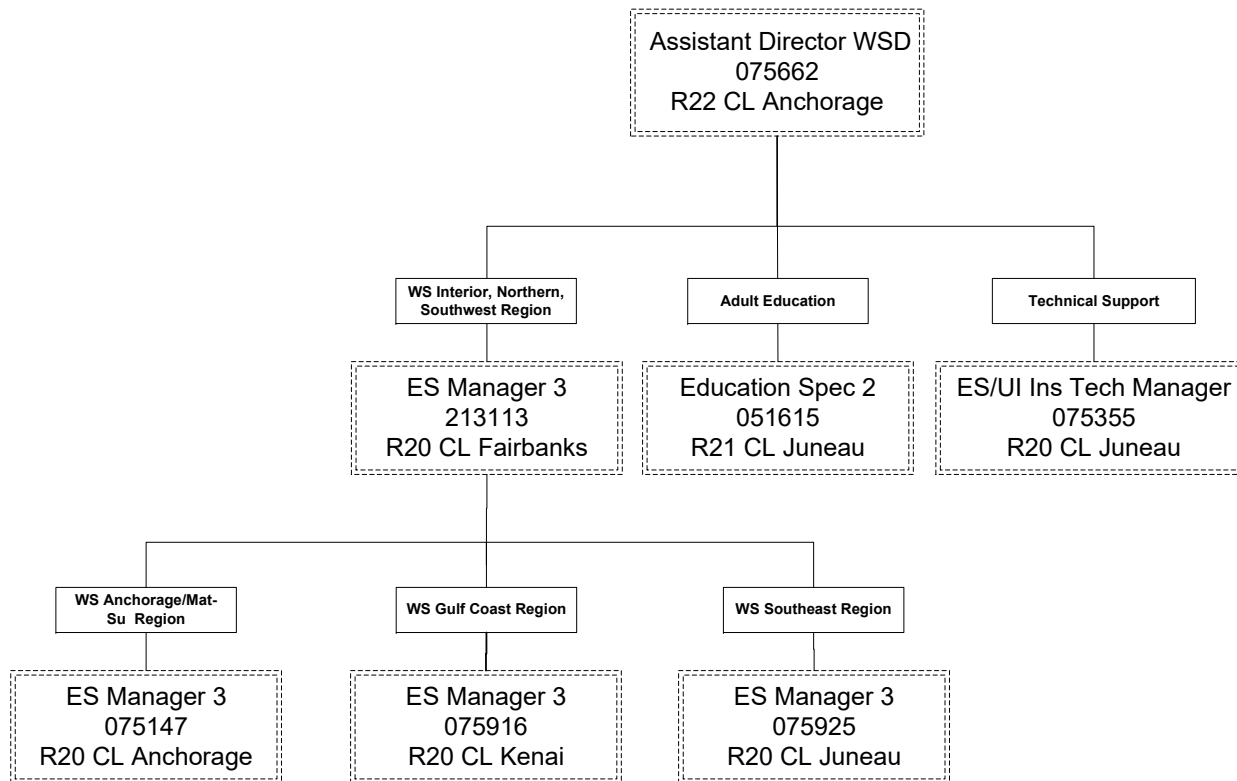
**Scenario:** FY2026 Governor (22363)  
**Component:** Workforce Services (2761)  
**RDU:** Employment and Training Services (646)

PCN	Job Class Title	Time Status	Retire Code	Barg Unit	Location	Salary Sched	Range / Step	Comp Months	Split / Count	Annual Salaries	COLA	Premium Pay	Annual Benefits	Total Costs	UGF Amount
		<b>Total Positions</b>	<b>New</b>	<b>Deleted</b>										<b>Total Salary Costs:</b>	8,356,606
														<b>Total COLA:</b>	109,932
	<b>Full Time Positions:</b>	120	0	0										<b>Total Premium Pay:</b>	0
	<b>Part Time Positions:</b>	0	0	0										<b>Total Benefits:</b>	5,787,436
	<b>Non Permanent Positions:</b>	6	0	0											
	<b>Positions in Component:</b>	126	0	0											
	<b>Total Component Months:</b>	1,512.0													
														<b>Total Pre-Vacancy:</b>	14,253,974
														<b>Minus Vacancy Adjustment of 7.00%:</b>	(997,778)
														<b>Total Post-Vacancy:</b>	13,256,196
														<b>Plus Lump Sum Premium Pay:</b>	0
														<b>Personal Services Line 100:</b>	13,256,196

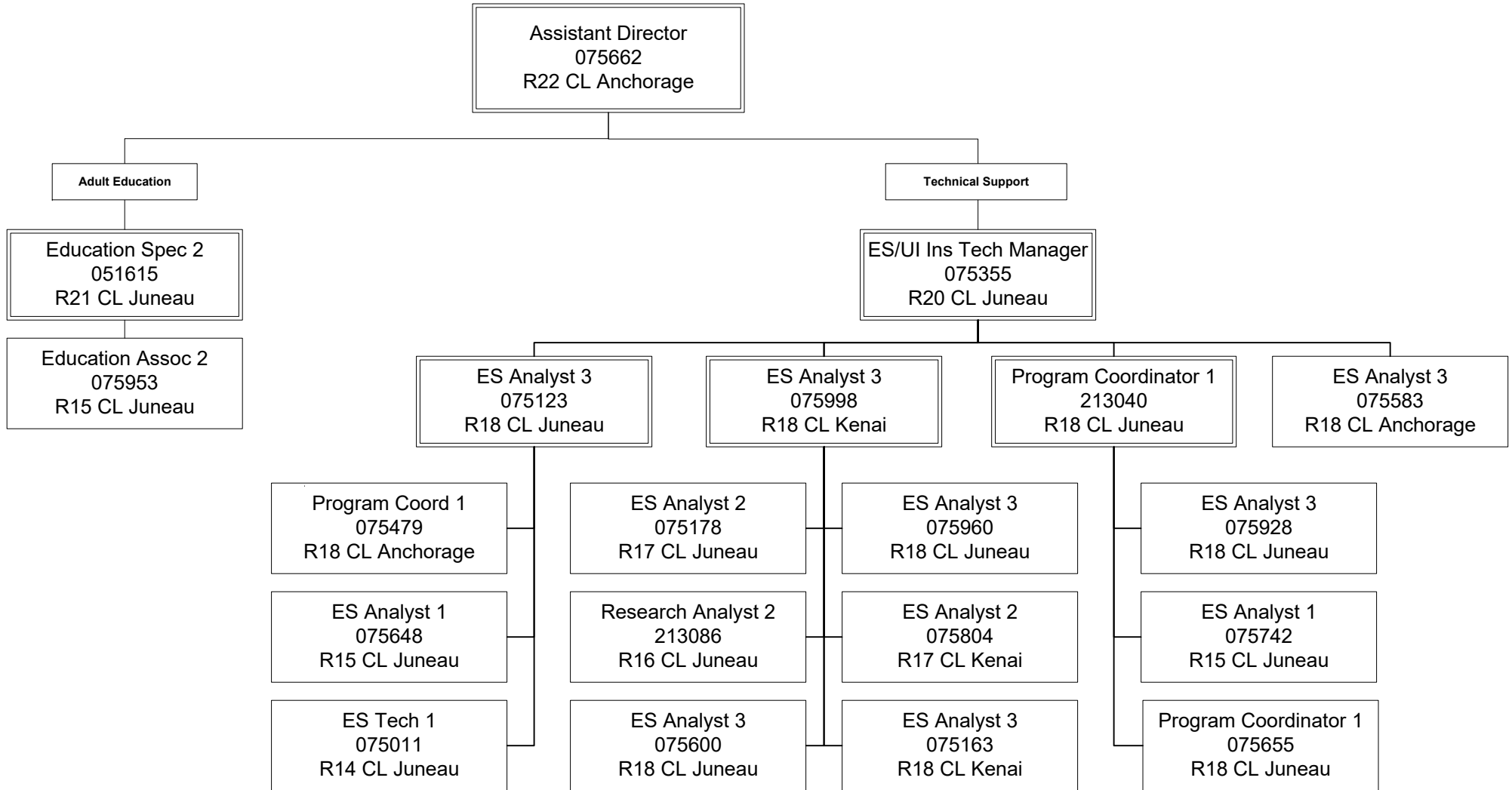
<b>PCN Funding Sources:</b>	<b>Pre-Vacancy</b>	<b>Post-Vacancy</b>	<b>Percent</b>
1002 Federal Receipts	12,808,363	11,911,778	89.86%
1003 General Fund Match	192,168	178,716	1.35%
1007 Interagency Receipts	790,659	735,313	5.55%
1054 Employment Assistance and Training Program Account	462,784	430,389	3.25%
<b>Total PCN Funding:</b>	<b>14,253,974</b>	<b>13,256,196</b>	<b>100.00%</b>

Note: If a position is split, an asterisk (\*) will appear in the Split/Count column. If the split position is also counted in the component, two asterisks (\*\*) will appear in this column. [No valid job title] appearing in the Job Class Title indicates that the PCN has an invalid class code or invalid range for the class code effective date of this scenario.

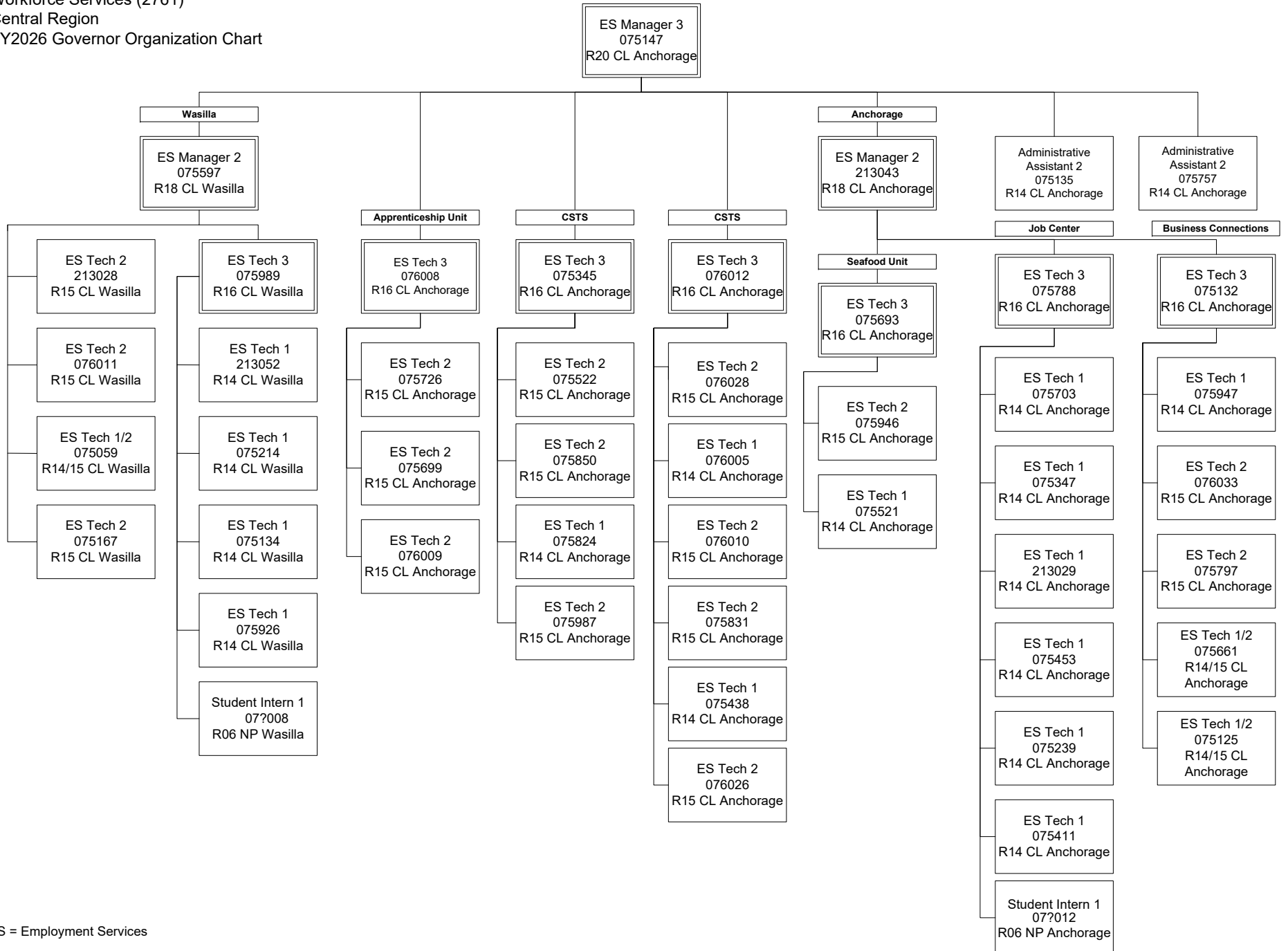
Department of Labor and Workforce Development  
 Division of Employment and Training Services  
 Workforce Services (2761)  
 Administration  
 FY2026 Governor Organization Chart



Department of Labor and Workforce Development  
 Division of Employment and Training Services  
 Workforce Services (2761)  
 Adult Education and Technical Support  
 FY2026 Governor Organization Chart

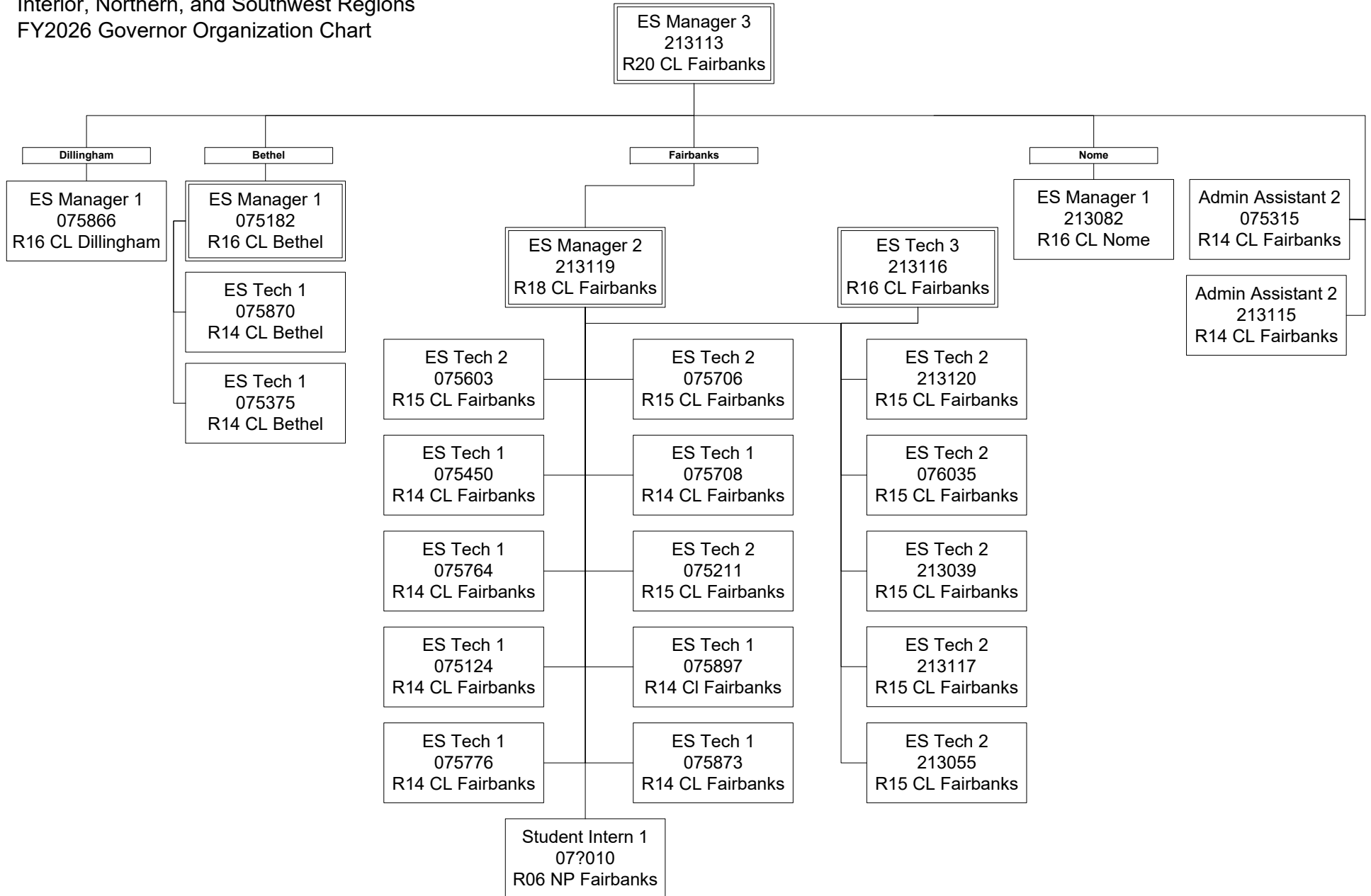


Department of Labor and Workforce Development  
 Division of Employment and Training Services  
 Workforce Services (2761)  
 Central Region  
 FY2026 Governor Organization Chart



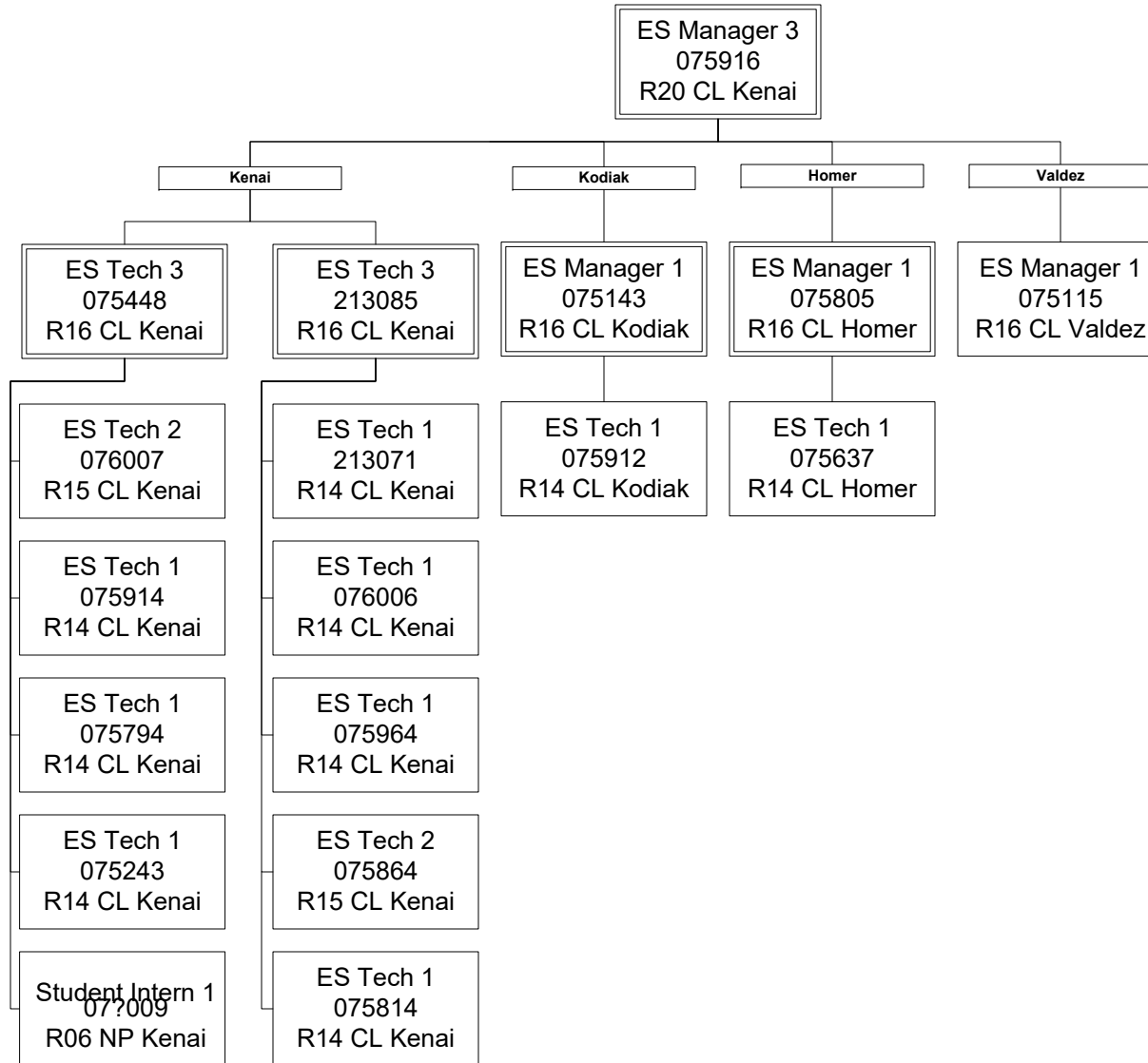
ES = Employment Services

Department of Labor and Workforce Development  
 Division of Employment and Training Services  
 Workforce Services (2761)  
 Interior, Northern, and Southwest Regions  
 FY2026 Governor Organization Chart



ES = Employment Services

Department of Labor and Workforce Development  
 Division of Employment and Training Services  
 Workforce Services (2761)  
 Gulf Coast Region  
 FY2026 Governor Organization Chart



Department of Labor and Workforce Development  
 Division of Employment and Training Services / Workforce Southeast Region  
 FY2025 Governor Organization Chart

