

# **State of Alaska FY2026 Governor's Operating Budget**

## **Department of Labor and Workforce Development Unemployment Insurance Component Budget Summary**

**Component: Unemployment Insurance****Contribution to Department's Mission**

Provide economic stability for communities in Alaska through payment of unemployment insurance benefits that keep skilled workers in Alaska.

**Core Services**

- Pay Unemployment Insurance (UI) benefits to eligible unemployed workers.
- Assess and collect UI tax contributions.
- Provide web-based services and products to workers and employers for accessing the Tax Online System and Benefit Internet Filing system.
- Work with and educate employers on how to fulfill contribution and reporting requirements.
- Protect integrity of the UI Trust Fund by preventing, detecting, and recovering benefit overpayments.

**Major Component Accomplishments in 2024**

- Met federal benefit timeliness and quality standards while paying a total of \$59 million of UI benefits to 18,465 claimants and responding to 60,839 phone calls from UI claimants and employers.
- Deposited over \$156 million of UI contributions into the UI Tax Trust Account and over \$26 million into the accounts of the State Training and Employment Program and Alaska Technical and Vocational Education Program; and collected \$1.9 million in overpaid benefits and penalties from fraudulent claims.
- Recovered approximately \$982 thousand through garnishment of Internal Revenue Service (IRS) tax returns of claimants and employers who owe the UI Trust Fund due to fraudulent claims or past due contributions.
- Increased employer participation in the State Information Data Exchange System (SIDES) by nine percent. Employer participation in SIDES helps UI receive information promptly and accurately, which supports the State in delivering timely nonmonetary determinations and preventing improper benefit payments.
- Applied for and received federal grants to improve the integrity of the UI program through projects like a Benefit Wage Calculator for claimants to improve claim accuracy and avoid incorrect payments, simplifying the instructional information and claims process for claimants by applying behavioral insights.

**Key Component Challenges**

- Limitations of the programming language for the UI Mainframe information technology system, which is about 30 years old, become apparent during each episodic downturn in the economy. This was particularly highlighted during the COVID-19 pandemic when the U.S. Department of Labor implemented three separate UI programs at once. Over the years the system's programming has been altered with each new requirement or federal program change, which means a detailed as-built system review is necessary prior to pursuing modernization. In FY2025, UI received a capital appropriation for this purpose.
- Ongoing staffing challenges creates other challenges for providing acceptable service levels.
- Implementing a second interview to the Reemployment Services and Eligibility Assessment (RESEA) program will require significant coordination and staff training in UI and Workforce Services. This is a new intervention within the RESEA program to speed UI claimants' return to work and assist them in obtaining and retaining long-term employment. A review and evaluation of this new intervention will also be necessary to measure its effectiveness.

**Significant Changes in Results to be Delivered in FY2026**

- Simplified UI instructional information and claims process for claimants.
- Revised resources in compliance with the Americans with Disabilities Act and translating certain documents for Limited English Proficiency claimants.
- Upgraded UI Tax Online System to best serve Alaskan employers and allow for more efficient automated

filing of quarterly contribution reports, online payment of employment security taxes, automated notifications to aid in timely maintenance of employer accounts, and electronic correspondence regarding claims filed.

## Statutory and Regulatory Authority

### Federal Authority:

5 USC Sec. 8501 – 8525	Unemployment Compensation for Federal and Military
Employees 20 CFR Part 615	Extended Benefits in the Federal-State Unemployment
	Compensation Program
20 CFR Part 616	Interstate Arrangement for Combining Employment
	and Wages
26 USC Chapter 23	Federal Unemployment Tax Act
26 USC Chapter 25	General Provisions Relating to Employment Taxes
26 USC Chapter 65	Abatements, Credits, and Refunds
Social Security Act Title III	Grants to States for Unemployment Compensation
Administration Social Security Act Title IX	Miscellaneous Provisions Relating to Employment
Security	
Social Security Act Title XI	General Provisions, Peer Review, and Administrative
Simplification Social Security Act Title XII	Advances to State Unemployment Funds
Public Law 93 – 618	Trade Act of 1974
Public Law 103 – 152	Mandatory Profiling of UI Claimants
Public Law 107 – 147	Temporary Extended Unemployment Compensation Act of
2002 Public Law 107 – 210	Trade Adjustment Assistance Reform Act of 2002
Public Law 110 - 252	Supplemental Appropriations Act, 2008, Title IV, Emergency
	Unemployment Compensation
Public Law 110 – 328	SSI Extension for Elderly and Disabled Refugees Act of
	2008
Public Law 110 - 449	Unemployment Compensation Extension Act of 2008
Public Law 111 - 5	Assistance for Unemployed Workers and
	Struggling Families Act
Public Law 111 - 205	Unemployment Compensation Extension Act of 2010
Public Law 111 - 157	Continuing Extension Act of 2010
Public Law 111 - 312	Tax Relief, Unemployment Insurance Reauthorization and
	Job Creation Act of 2010
Public Law 112-40	An act to extend the Generalized System of Preferences, and
	for other purposes
Title 20 CFR, Chapter V	Employment and Training Administration
Public Law 113 - 128	Workforce Innovation and Opportunity Act
Public Law 116-127	Families First Coronavirus Response Act
Public Law 116-136	Coronavirus Aid, Relief, and Economic Security Act (CARES Act)
Public Law 116-151	Protecting Nonprofits from Catastrophic Cash Flow Strain Act
Public Law 117-2	American Rescue Plan Act

### Statutory Authority:

AS 23.20	Alaska Employment Security Act
AS 23.15.830	Alaska Technical and Vocational Education Program Account

### Administrative Regulations:

8 AAC 85	Employment Security
----------	---------------------

### Admin Order #275

The Division of Business Partnerships is dissolved. The Alaska Workforce Investment Board (AS 23.15.550), is organized as an entity under the Office of the Commissioner. The Employment Security Division and remaining functions of the Division of Business Partnerships are merged into a single division called the Division of Employment and Training Services.

**Contact Information**

**Contact:** Paloma Harbour, Director  
**Phone:** (907) 723-6047  
**E-mail:** paloma.harbour@alaska.gov

Unemployment Insurance Personal Services Information				
Authorized Positions			Personal Services Costs	
	FY2025 Management Plan	FY2026 Governor		
Full-time	139	139	Annual Salaries	11,053,048
Part-time	22	21	COLA	122,158
Nonpermanent	2	2	Premium Pay	0
			Annual Benefits	7,669,206
			<i>Less 5.58% Vacancy Factor</i>	(1,052,112)
			Lump Sum Premium Pay	0
<b>Totals</b>	<b>163</b>	<b>162</b>	<b>Total Personal Services</b>	<b>17,792,300</b>

Position Classification Summary					
Job Class Title	Anchorage	Fairbanks	Juneau	Others	Total
Accounting Technician 2	2	0	9	0	11
Accounting Technician 3	0	0	2	0	2
Accounting Technician 4	1	0	1	0	2
Administrative Assistant 2	1	0	2	0	3
Administrative Assistant 3	1	0	0	0	1
Appeals Officer 1	1	0	0	0	1
Appeals Officer 2	0	0	1	0	1
Appeals Officer 3	1	0	0	0	1
Asst Dir Emp Se	1	0	0	0	1
Bus Sv Pj Mgr 1	0	0	1	0	1
College Intern 2	1	0	1	0	2
Emp/Ui Tech Mgr	1	0	2	0	3
Employment Security Analyst 1	0	0	1	0	1
Employment Security Analyst 2	2	0	7	0	9
Employment Security Analyst 3	2	0	9	0	11
Field Auditor 1	3	2	3	3	11
Field Auditor 2	2	0	0	0	2
Investigator 2	4	0	3	0	7
Investigator 3	1	0	0	0	1
Office Assistant 1	0	0	1	0	1
Office Assistant 2	0	0	1	0	1
Publications Specialist 3	0	0	1	0	1
Spvr Ui Tax	0	0	1	0	1
Supervisor, Audit Operations	1	0	0	0	1
Ui Claim Mgr 2	1	0	1	0	2
Ui Q/C Auditor	4	2	2	0	8
Ui Q/C Spvr	0	0	1	0	1
Ui Tech 1	27	0	32	0	59
Ui Tech 2	4	0	3	0	7
Ui Tech 3	4	0	5	0	9
<b>Totals</b>	<b>65</b>	<b>4</b>	<b>90</b>	<b>3</b>	<b>162</b>

**Component Detail All Funds**  
**Department of Labor and Workforce Development**

**Component:** Unemployment Insurance (2276)  
**RDU:** Employment and Training Services (646)

Non-Formula Component

	FY2024 Actuals	FY2025 Enrolled	FY2025 Authorized	FY2025 Management Plan	FY2026 Governor Adjusted Base	FY2026 Governor	FY2025 Management Plan vs FY2026 Governor	
1000 Personal Services	13,375.7	18,087.4	18,087.4	17,468.3	17,792.3	17,792.3	324.0	1.9%
2000 Travel	74.1	90.8	90.8	110.0	110.0	110.0	0.0	0.0%
3000 Services	5,683.2	9,829.7	9,829.7	9,407.9	9,407.9	7,757.9	-1,650.0	-17.5%
4000 Commodities	120.0	354.2	354.2	355.2	355.2	355.2	0.0	0.0%
5000 Capital Outlay	0.0	0.0	0.0	0.0	0.0	0.0	0.0	0.0%
7000 Grants, Benefits	0.0	548.0	548.0	548.0	548.0	48.0	-500.0	-91.2%
8000 Miscellaneous	0.0	0.0	0.0	0.0	0.0	0.0	0.0	0.0%
<b>Totals</b>	<b>19,253.0</b>	<b>28,910.1</b>	<b>28,910.1</b>	<b>27,889.4</b>	<b>28,213.4</b>	<b>26,063.4</b>	<b>-1,826.0</b>	<b>-6.5%</b>
<b>Fund Sources:</b>								
1002 Fed Rcpts (Fed)	18,340.2	27,644.2	27,644.2	26,552.0	26,859.2	24,709.2	-1,842.8	-6.9%
1005 GF/Prgm (DGF)	0.0	8.7	8.7	8.7	8.7	8.7	0.0	0.0%
1007 I/A Rcpts (Other)	195.6	356.0	356.0	356.0	358.2	358.2	2.2	0.6%
1049 Trng Bldg (DGF)	0.0	0.0	0.0	55.0	55.0	55.0	0.0	0.0%
1054 STEP (DGF)	351.3	440.6	440.6	440.6	447.9	447.9	7.3	1.7%
1108 Stat Desig (Other)	14.6	20.0	20.0	36.5	36.5	36.5	0.0	0.0%
1151 VoTech Ed (DGF)	351.3	440.6	440.6	440.6	447.9	447.9	7.3	1.7%
<b>Unrestricted General (UGF)</b>	<b>0.0</b>	<b>0.0</b>	<b>0.0</b>	<b>0.0</b>	<b>0.0</b>	<b>0.0</b>	<b>0.0</b>	<b>0.0%</b>
<b>Designated General (DGF)</b>	<b>702.6</b>	<b>889.9</b>	<b>889.9</b>	<b>944.9</b>	<b>959.5</b>	<b>959.5</b>	<b>14.6</b>	<b>1.5%</b>
<b>Other Funds</b>	<b>210.2</b>	<b>376.0</b>	<b>376.0</b>	<b>392.5</b>	<b>394.7</b>	<b>394.7</b>	<b>2.2</b>	<b>0.6%</b>
<b>Federal Funds</b>	<b>18,340.2</b>	<b>27,644.2</b>	<b>27,644.2</b>	<b>26,552.0</b>	<b>26,859.2</b>	<b>24,709.2</b>	<b>-1,842.8</b>	<b>-6.9%</b>
<b>Positions:</b>								
Permanent Full Time	148	141	141	139	139	139	0	0.0%
Permanent Part Time	25	23	23	22	21	21	-1	-4.5%
Non Permanent	3	3	3	2	2	2	0	0.0%

**Change Record Detail - Multiple Scenarios with Descriptions**  
**Department of Labor and Workforce Development**

**Component:** Unemployment Insurance (2276)  
**RDU:** Employment and Training Services (646)

Scenario/Change Record Title	Trans Type	Totals	Personal Services	Travel	Services	Commodities	Capital Outlay	Grants, Benefits	Miscellaneous	Positions		NP
										PFT	PPT	
***** Changes From FY2025 Enrolled To FY2025 Authorized *****												
<b>FY2025 Enrolled</b>	Enrolled	28,910.1	18,087.4	90.8	9,829.7	354.2	0.0	548.0	0.0	141	23	3
1002 Fed Rcpts		27,644.2										
1005 GF/Prgm		8.7										
1007 I/A Rcpts		356.0										
1054 STEP		440.6										
1108 Stat Desig		20.0										
1151 VoTech Ed		440.6										
<b>Subtotal</b>		<b>28,910.1</b>	<b>18,087.4</b>	<b>90.8</b>	<b>9,829.7</b>	<b>354.2</b>	<b>0.0</b>	<b>548.0</b>	<b>0.0</b>	<b>141</b>	<b>23</b>	<b>3</b>
***** Changes From FY2025 Authorized To FY2025 Management Plan *****												
<b>Transfer Authority from Workforce Services to Align with Division Needs</b>	Trin	71.5	25.0	0.0	45.5	1.0	0.0	0.0	0.0	0	0	0
1049 Trng Bldg		55.0										
1108 Stat Desig		16.5										
Transfer available authority from Workforce Services to align with division needs for FY2025												
<b>Transfer Federal Authority to Workforce Services to Align with Division Needs</b>	Trout	-1,000.0	0.0	0.0	-1,000.0	0.0	0.0	0.0	0.0	0	0	0
1002 Fed Rcpts		-1,000.0										
Transfer of federal authority from Unemployment Insurance to Workforce Services to align with the anticipated increase in demand for grants issued through the Alaska Job Centers.												
<b>Align Authority with FY2025 Travel Plan and to Address Personal Services Needs</b>	LIT	0.0	-551.9	19.2	532.7	0.0	0.0	0.0	0.0	0	0	0
Transfer authority from personal services to services and travel for the FY2025 Management Plan.												
<b>Delete Expired College Intern 2 and Student Intern 2</b>	PosAdj	0.0	0.0	0.0	0.0	0.0	0.0	0.0	0.0	0	0	-2
Delete two expired intern positions:												
Nonpermanent College Intern 2 (07IN1904), range 9, located in Juneau												
Nonpermanent Student Intern 2 (07IN1907), range 7, located in Juneau												
<b>Transfer Employment Services Technician 1 to Workforce Services</b>	Trout	-92.2	-92.2	0.0	0.0	0.0	0.0	0.0	0.0	-1	0	0

**Change Record Detail - Multiple Scenarios with Descriptions**  
**Department of Labor and Workforce Development**

**Component:** Unemployment Insurance (2276)  
**RDU:** Employment and Training Services (646)

Scenario/Change Record Title	Trans Type	Totals	Personal Services	Travel	Services	Commodities	Capital Outlay	Grants, Benefits	Miscellaneous	Positions			
										PFT	PPT	NP	
1002 Fed Rcpts		-92.2											

Unemployment Insurance (UI) and Workforce Service (WS) operate in a cycle. As claims for UI decrease, demand for training and workforce services typically increases. The transfer of full-time Employment Services Technician 1 (075764), range 14, located in Fairbanks, moves a vacant position from UI to WS to meet the increased demand for workforce services.

**Add College Intern 2**

PosAdj	0.0	0.0	0.0	0.0	0.0	0.0	0.0	0.0	0.0	0	0	1
--------	-----	-----	-----	-----	-----	-----	-----	-----	-----	---	---	---

Replace inactive College Intern 2 (07IN1904), range 9, located in Juneau, with College Intern 2 (07#007), range 9, located in Juneau.

**Change Unemployment Insurance Technician 1 from Part-Time to Full-Time**

PosAdj	0.0	0.0	0.0	0.0	0.0	0.0	0.0	0.0	0.0	1	-1	0
--------	-----	-----	-----	-----	-----	-----	-----	-----	-----	---	----	---

Change the time status of Unemployment Insurance Technician 1 (075787), range 14, located in Juneau, from part-time to full-time.

**Transfer Unemployment Insurance Technician 1 to Management Services for Increased Travel Processing Workload**

Trout	0.0	0.0	0.0	0.0	0.0	0.0	0.0	0.0	0.0	-1	0	0
-------	-----	-----	-----	-----	-----	-----	-----	-----	-----	----	---	---

The department needs an Accounting Technician 3 for implemented revised State of Alaska travel procedures and policies. The full-time Unemployment Insurance Technician 1 (075840), range 14, located in Juneau, has been identified as a long-time vacant position that can be repurposed and reclassified to an Accounting Technician 3 in Management Services.

**Transfer Vacant Administrative Assistant to Technology Services**

Trout	0.0	0.0	0.0	0.0	0.0	0.0	0.0	0.0	0.0	-1	0	0
-------	-----	-----	-----	-----	-----	-----	-----	-----	-----	----	---	---

Commissioner and Administrative Services created the Technology Services component in FY2025. A vacant full-time Administrative Assistant 1 (075878), range 12, located in Fairbanks, is being transferred from Unemployment Insurance to Technology Services and reclassified as an Analyst Programmer 3 in support of the department's technology needs.

<b>Subtotal</b>	<b>27,889.4</b>	<b>17,468.3</b>	<b>110.0</b>	<b>9,407.9</b>	<b>355.2</b>	<b>0.0</b>	<b>548.0</b>	<b>0.0</b>	<b>139</b>	<b>22</b>	<b>2</b>
-----------------	-----------------	-----------------	--------------	----------------	--------------	------------	--------------	------------	------------	-----------	----------

\*\*\*\*\* Changes From FY2025 Management Plan To FY2026 Governor Adjusted Base \*\*\*\*\*

**FY2026 Salary, Health Insurance, and Retirement Increases**

SalAdj	324.0	324.0	0.0	0.0	0.0	0.0	0.0	0.0	0.0	0	0	0
--------	-------	-------	-----	-----	-----	-----	-----	-----	-----	---	---	---

1002 Fed Rcpts	307.2
1007 I/A Rcpts	2.2
1054 STEP	7.3
1151 VoTech Ed	7.3

Salary, health and retirement increases: \$324.0

**Change Record Detail - Multiple Scenarios with Descriptions**  
**Department of Labor and Workforce Development**

**Component:** Unemployment Insurance (2276)  
**RDU:** Employment and Training Services (646)

Scenario/Change Record Title	Trans Type	Totals	Personal Services	Travel	Services	Commodities	Capital Outlay	Grants, Benefits	Miscellaneous	Positions		NP
										PFT	PPT	
AlaskaCare increase from \$1908 to \$2030.11 per member per month: \$41.3												
FY2026 APEA (non-law enforcement) 3% cost of living adjustment: \$112.2												
FY2026 3% cost of living adjustment for employees not covered by a collective bargaining agreement: \$2.4												
FY2026 PERS rate adjustment from 26.76% to 28.33%: \$168.1												
<b>Transfer Unemployment Insurance Technician 1 to Workers' Compensation for Stay-at-Work Program Support</b>												
Trout		0.0	0.0	0.0	0.0	0.0	0.0	0.0	0.0	0	-1	0
Transfer a vacant part-time position to Workers' Compensation without funding for reclassification to support the Stay-at-Work program:												
Part-time Unemployment Insurance Technician 1 (076023), range 14, located in Juneau												
<b>Subtotal</b>		<b>28,213.4</b>	<b>17,792.3</b>	<b>110.0</b>	<b>9,407.9</b>	<b>355.2</b>	<b>0.0</b>	<b>548.0</b>	<b>0.0</b>	<b>139</b>	<b>21</b>	<b>2</b>
***** <b>Changes From FY2026 Governor Adjusted Base To FY2026 Governor</b> *****												
<b>Eliminate Pandemic-Related Federal Receipt Authority No Longer Needed</b>												
Dec		-2,150.0	0.0	0.0	-1,650.0	0.0	0.0	-500.0	0.0	0	0	0
1002 Fed Rcpts		-2,150.0										
During the pandemic, Unemployment Insurance (UI) required additional federal receipt authority to process pandemic unemployment assistance. The period of performance on CARES Act activity ended June 30, 2024. This federal receipt authority is no longer needed.												
Alaska experienced smaller disasters in the past few years including the Wrangell landslide in November 2023 and the Juneau flooding event that occurred in August 2024. As a result, the component is retaining \$48.0 in federal receipt authority to process Disaster Unemployment Assistance as it becomes available.												
<b>Totals</b>		<b>26,063.4</b>	<b>17,792.3</b>	<b>110.0</b>	<b>7,757.9</b>	<b>355.2</b>	<b>0.0</b>	<b>48.0</b>	<b>0.0</b>	<b>139</b>	<b>21</b>	<b>2</b>

**Line Item Detail (1676)**  
**Department of Labor and Workforce Development**  
**Travel**

**Component:** Unemployment Insurance (2276)

Line Number	Line Name		FY2024 Actuals	FY2025 Management Plan	FY2026 Governor
2000	Travel		74.1	110.0	110.0
Object Class	Servicing Agency	Explanation	FY2024 Actuals	FY2025 Management Plan	FY2026 Governor
<b>2000 Travel Detail Totals</b>			<b>74.1</b>	<b>110.0</b>	<b>110.0</b>
2000	In-State Employee Travel	In-state employee travel to support the department's mission.	43.9	69.4	69.4
2002	Out of State Employee Travel	Out of state employee travel.	30.1	40.5	40.5
2006	Other Travel Costs	Cash advance fees.	0.1	0.1	0.1

**Line Item Detail (1676)**  
**Department of Labor and Workforce Development**  
**Services**

**Component:** Unemployment Insurance (2276)

Line Number	Line Name		FY2024 Actuals	FY2025 Management Plan	FY2026 Governor
3000	Services		5,683.2	9,407.9	7,757.9
Object Class	Servicing Agency	Explanation	FY2024 Actuals	FY2025 Management Plan	FY2026 Governor
<b>3000 Services Detail Totals</b>			<b>5,683.2</b>	<b>9,407.9</b>	<b>7,757.9</b>
3000	Education Services	Training, education, and memberships.	18.5	35.0	35.0
3001	Financial Services	Financial services, including auditing and accounting, consulting, insurance, or interest expense.	23.0	40.0	40.0
3002	Legal and Judicial Services	Custody care, attorney fees, expert and non-expert witnesses, mediation services, transcription and recording services, case costs, and settlement fees.	1.6	36.0	36.0
3003	Information Technology	Information technology, including training, consulting, leases, and software licensing and maintenance.	1,284.1	2,496.0	2,496.0
3004	Telecommunications	Local, long distance, and cellular telephone charges, television, data/network, telecommunication equipment, and other wireless charges from outside vendors.	846.3	846.3	846.3
3006	Delivery Services	Freight, courier services, and postage.	13.2	18.0	18.0
3007	Advertising and Promotions	Advertising for regulation changes, board meetings, recruitments, or other public notices.	1.1	2.0	2.0
3008	Utilities	Electricity, heating fuel, water, sewage, recycling, heating fuel, trash, and confidential document and other disposal services.	19.4	19.4	18.5

**Line Item Detail (1676)**  
**Department of Labor and Workforce Development**  
**Services**

**Component:** Unemployment Insurance (2276)

Object Class	Servicing Agency	Explanation	FY2024 Actuals	FY2025 Management Plan	FY2026 Governor
<b>3000 Services Detail Totals</b>			<b>5,683.2</b>	<b>9,407.9</b>	<b>7,757.9</b>
3009	Structure/Infrastructure/Land	Room rental for training and seminar space, board or council meetings, or storage and archiving needs.	44.3	170.0	170.0
3010	Equipment/Machinery	Machinery, furniture, and equipment purchase, repairs, maintenance, rentals, and leases.	28.5	45.5	45.5
3011	Other Services	Other services including interpreters, consulting, print, copy and graphic services, and safety services.	87.7	1,736.8	87.7
3012	Inter-Agency Federal Indirect Rate Allocation	Labor - DETS Administration (3116) Indirect cost allocation for division purchasing, federal accounting reports, contracts, fiscal, and mail services provided by the Employment and Training Services Administration component.	27.9	33.0	33.0
3012	Inter-Agency Federal Indirect Rate Allocation	Labor - Management Services (335) Indirect cost allocation for departmental purchasing, accounting, reports, personnel consultation and other services provided by Management Services.	53.2	63.0	63.0
3013	Inter-Agency Data Processing Operations Allocation	Labor - Management Services (335) Allocation for Data Processing network and support services.	137.4	327.0	327.0
3016	Inter-Agency Economic Development	H&SS - Department-wide Reimbursable services agreement with Department of Health and Social Services for death certificates.	3.3	3.3	3.3
3016	Inter-Agency Economic Development	Labor - Labor Market Information (336) Reimbursable services agreements with Labor Market Information for unemployment insurance actuarial research, profiling services and related reports.	320.1	331.7	331.7
3016	Inter-Agency Economic Development	Labor - Management Services (335) Data Processing costs associated with Secure Access Management.	53.3	56.0	56.0
3016	Inter-Agency Economic Development	Labor - Workforce Services (2761) Reimbursable services agreement	360.2	360.2	360.2

**Line Item Detail (1676)**  
**Department of Labor and Workforce Development**  
**Services**

**Component:** Unemployment Insurance (2276)

Object Class	Servicing Agency	Explanation	FY2024 Actuals	FY2025 Management Plan	FY2026 Governor
<b>3000 Services Detail Totals</b>			<b>5,683.2</b>	<b>9,407.9</b>	<b>7,757.9</b>
Development		with Workforce Services for re-employment services provided to UI claimants.			
3016 Inter-Agency Economic Development	Labor - Management Services (335)	Data Processing costs associated with TVEP & STEP tax collection efforts.	68.7	70.0	70.0
3017 Inter-Agency Information Technology Non-Telecommunications	Admin - Department-wide	Reimbursable services agreement with the Office of Information Technology for non-telecommunications support, including software and computer services.	549.6	554.2	554.2
3018 Inter-Agency Information Technology Telecommunications	Admin - Department-wide	Reimbursable services agreement with the Office of Information Technology for telecommunication support.	52.3	62.2	62.2
3019 Inter-Agency Storage	Labor - Management Services (335)	Moving, surplus, and storage expenses.	2.1	2.1	2.1
3021 Inter-Agency Mail	Admin - Department-wide	Reimbursable services agreement with Shared Services of Alaska for central mailroom support and services.	781.1	781.1	781.1
3022 Inter-Agency Human Resources	Admin - Department-wide	Reimbursable services agreement with the Division of Personnel and Labor Relations for human resources and personnel services.	108.8	162.0	162.0
3023 Inter-Agency Building Leases	Trans - Department-wide	State-owned facility space rent or other property leases.	522.2	846.0	846.0
3024 Inter-Agency Legal	Law - Department-wide	Reimbursable services agreement with the Department of Law for legal services.	115.0	125.0	125.0
3026 Inter-Agency Insurance	Admin - Department-wide	Reimbursable services agreement with the Division of Risk	11.2	13.8	13.8

**Line Item Detail (1676)**  
**Department of Labor and Workforce Development**  
**Services**

**Component:** Unemployment Insurance (2276)

Object Class	Servicing Agency	Explanation	FY2024 Actuals	FY2025 Management Plan	FY2026 Governor
<b>3000 Services Detail Totals</b>			<b>5,683.2</b>	<b>9,407.9</b>	<b>7,757.9</b>
		Management for risk management insurance charges for leased buildings, repossessed properties, public official bonds, and overhead.			
3027	Inter-Agency Financial	Admin - Department-wide			
		Reimbursable services agreement with the Division of Finance for system services for State accounting and payroll (IRIS), and reporting (ALDER) systems.	130.7	128.6	128.6
3027	Inter-Agency Financial	Admin - Department-wide			
		Reimbursable services agreement with Shared Services of Alaska for travel and accounts payable services.	0.0	25.3	25.3
3037	State Equipment Fleet	Trans - Department-wide			
		State equipment fleet fixed cost services for equipment replacement, maintenance and fuel, both allowable and non-allowable.	18.4	18.4	18.4

**Line Item Detail (1676)**  
**Department of Labor and Workforce Development**  
**Commodities**

**Component:** Unemployment Insurance (2276)

Line Number	Line Name		FY2024 Actuals	FY2025 Management Plan	FY2026 Governor
4000	Commodities		120.0	355.2	355.2
Object Class	Servicing Agency	Explanation	FY2024 Actuals	FY2025 Management Plan	FY2026 Governor
<b>4000 Commodities Detail Totals</b>			<b>120.0</b>	<b>355.2</b>	<b>355.2</b>
4000	Business	General business supplies such as office consumables and computer equipment.	119.6	355.2	345.2
4002	Household/Institutional	Office supplies, supplies and consumables for public meetings, and cleaning products.	0.0	0.0	10.0
4005	Building Materials	Building and maintenance materials, including office and directional signage.	0.4	0.0	0.0

**Line Item Detail (1676)**  
**Department of Labor and Workforce Development**  
**Grants, Benefits**

**Component:** Unemployment Insurance (2276)

Line Number	Line Name		FY2024 Actuals	FY2025 Management Plan	FY2026 Governor
7000	Grants, Benefits		0.0	548.0	48.0
Object Class	Servicing Agency	Explanation	FY2024 Actuals	FY2025 Management Plan	FY2026 Governor
		<b>7000 Grants, Benefits Detail Totals</b>	<b>0.0</b>	<b>548.0</b>	<b>48.0</b>
7002	Benefits	Benefit payments for benefit claims under the Federal Emergency Management Agency's (FEMA) Disaster Unemployment Assistance (DUA) program.	0.0	548.0	48.0

**Revenue Detail (1681)**  
**Department of Labor and Workforce Development**

**Component:** Unemployment Insurance (2276)

Revenue Type (OMB Fund Code) Revenue Source	Component	Comment	FY2024 Actuals	FY2025 Management Plan	FY2026 Governor
<b>5002 Fed Rcpts (1002 Fed Rcpts)</b>			<b>18,340.2</b>	<b>26,552.0</b>	<b>24,709.2</b>
5007 Federal Health and Human Services - Miscellaneous Grants		U.S. Department of Labor grant to support Unemployment Insurance program administration.	17,869.8	23,401.8	23,401.8
5007 Federal Health and Human Services - Miscellaneous Grants		Reemployment Services & Eligibility Assessment (RESEA) program administration.	458.5	692.5	692.5
5007 Federal Health and Human Services - Miscellaneous Grants		American Rescue Plan (ARPA) - Fraud Detection and Prevention program administration.	0.0	2,360.8	558.0
5007 Federal Health and Human Services - Miscellaneous Grants		Federal Emergency Management Agency's (FEMA) State of Alaska for Disaster Unemployment Assistance (DUA) supplemental payments and administration.	11.9	96.9	56.9
<b>5005 GF/Prgm (1005 GF/Prgm)</b>			<b>0.2</b>	<b>8.7</b>	<b>8.7</b>
5108 Program Receipts General Government - Charges for Services		Collections from non-state entities for the release of information.	0.2	8.7	8.7
<b>5007 I/A Rcpts (1007 I/A Rcpts)</b>			<b>195.6</b>	<b>356.0</b>	<b>358.2</b>
5301 Inter-Agency Receipts	Admin - Department-wide	Reimbursable services agreement with Department of Administration for Secure Access Management.	1.5	2.9	2.9
5301 Inter-Agency Receipts	E&ED - Department-wide	Reimbursable services agreement with Department of Education for Secure Access Management.	2.4	4.8	4.8
5301 Inter-Agency Receipts	Health - Department-wide	Reimbursable services agreement with Department of Health and Social Services, Division of Public Assistance for Secure Access Management.	38.6	55.5	55.5
5301 Inter-Agency Receipts	Labor - Client Services (1828)	Reimbursable services agreement with Workforce Services for Secure Access Management.	0.8	1.3	1.3
5301 Inter-Agency Receipts	Labor - Labor Market Information	Reimbursable services agreement	2.4	4.8	4.8

**Revenue Detail (1681)**  
**Department of Labor and Workforce Development**

**Component:** Unemployment Insurance (2276)

Revenue Type (OMB Fund Code) Revenue Source	Component	Comment	FY2024 Actuals	FY2025 Management Plan	FY2026 Governor
	(336)	with Labor Market Information for Secure Access Management.			
5301 Inter-Agency Receipts	Labor - Mechanical Inspection (346)	Reimbursable services agreement with Labor Standards and Safety for Secure Access Management.	4.0	7.6	7.6
5301 Inter-Agency Receipts	Labor - Unemployment Insurance (2276)	Other reimbursable service agreements yet to be encumbered.	0.0	82.2	84.4
5301 Inter-Agency Receipts	Labor - Workers' Compensation (344)	Reimbursable services agreement with Workers' Compensation for Secure Access Management.	4.0	7.7	7.7
5301 Inter-Agency Receipts	Labor - Workforce Services (2761)	Reimbursable service agreement with Workforce Services for release of confidential information.	12.1	22.0	22.0
5301 Inter-Agency Receipts	Law - Department-wide	Reimbursable services agreement with Department of Law for Secure Access Management.	3.8	7.6	7.6
5301 Inter-Agency Receipts	Rev - Department-wide	Reimbursable services agreement with Department of Revenue for Secure Access Management.	13.0	24.6	24.6
5301 Inter-Agency Receipts	Labor - Workforce Services (2761)	Reimbursable service agreement with Workforce Development for Workforce Innovation and Opportunity Act Rapid Response.	34.1	0.0	0.0
5301 Inter-Agency Receipts	Rev - Department-wide	Reimbursable services agreement with Department of Revenue Child Support program for cross match with program records.	78.4	130.0	130.0
5301 Inter-Agency Receipts	Labor - Workforce Services (2761)	Reimbursable services agreement with Workforce Services for federal Workforce Innovation and Opportunity Act layoff rapid response activities.	0.5	5.0	5.0
<b>5108 Stat Desig (1108 Stat Desig)</b>			<b>72.6</b>	<b>36.5</b>	<b>36.5</b>
5206 Statutory Designated Program Receipts - Contracts		Collections from non-state entities for Secure Access Management.	72.6	36.5	36.5

**Revenue Detail (1681)**  
**Department of Labor and Workforce Development**

**Component:** Unemployment Insurance (2276)

Revenue Type (OMB Fund Code) Revenue Source	Component	Comment	FY2024 Actuals	FY2025 Management Plan	FY2026 Governor
<b>6049 Trng Bldg (1049 Trng Bldg)</b>			<b>0.0</b>	<b>55.0</b>	<b>55.0</b>
6520 Training/Building Fund Pblc Prtctn - Misc Fines/Forfeitures		Training and Building fund established under AS 23.20.130(d) is derived through the assessment of interest and penalties on unemployment insurance taxes collected from Alaskan employers for past due contributions, failure to file reports, and for nonpayment of contributions.	0.0	55.0	55.0
<b>6054 Empl Trng (1054 STEP)</b>			<b>351.3</b>	<b>440.6</b>	<b>447.9</b>
6560 State Training and Employment Program - Contributions		State Training and Employment Program (AS 23.15.620) provides funds for grants to employment and training entities for services to Alaskans.	351.3	440.6	447.9
<b>6151 VoTech Ed (1151 VoTech Ed)</b>			<b>351.3</b>	<b>440.6</b>	<b>447.9</b>
6775 Technical Vocational Education Program - Contributions		Technical and Vocational Education Program Account (AS 23.15.830) provides funds to support technical and vocational training programs across Alaska.	351.3	440.6	447.9

**Inter-Agency Services (1682)**  
**Department of Labor and Workforce Development**

**Component:** Unemployment Insurance (2276)

				FY2024 Actuals	FY2025 Management Plan	FY2026 Governor
<b>Component Totals</b>				<b>3,315.5</b>	<b>3,962.9</b>	<b>3,962.9</b>
With Department of Labor and Workforce Development				1,022.9	1,243.0	1,243.0
With Department of Health & Social Services				3.3	3.3	3.3
With Department of Administration				1,633.7	1,727.2	1,727.2
With Department of Transportation and Public Facilities				540.6	864.4	864.4
With Department of Law				115.0	125.0	125.0
<b>Object Class</b>	<b>Servicing Agency</b>	<b>Explanation</b>	<b>FY2024 Actuals</b>	<b>FY2025 Management Plan</b>	<b>FY2026 Governor</b>	
3012	Inter-Agency Federal Indirect Rate Allocation	Labor - DETS Administration (3116)	27.9	33.0	33.0	
		Indirect cost allocation for division purchasing, federal accounting reports, contracts, fiscal, and mail services provided by the Employment and Training Services Administration component.				
3012	Inter-Agency Federal Indirect Rate Allocation	Labor - Management Services (335)	53.2	63.0	63.0	
		Indirect cost allocation for departmental purchasing, accounting, reports, personnel consultation and other services provided by Management Services.				
3013	Inter-Agency Data Processing Operations Allocation	Labor - Management Services (335)	137.4	327.0	327.0	
		Allocation for Data Processing network and support services.				
3016	Inter-Agency Economic Development	H&SS - Department-wide	3.3	3.3	3.3	
		Reimbursable services agreement with Department of Health and Social Services for death certificates.				
3016	Inter-Agency Economic Development	Labor - Labor Market Information (336)	320.1	331.7	331.7	
		Reimbursable services agreements with Labor Market Information for unemployment insurance actuarial research, profiling services and related reports.				
3016	Inter-Agency Economic Development	Labor - Management Services (335)	53.3	56.0	56.0	
		Data Processing costs associated with Secure Access Management.				

**Inter-Agency Services (1682)**  
**Department of Labor and Workforce Development**

**Component:** Unemployment Insurance (2276)

<b>Object Class</b>	<b>Servicing Agency</b>	<b>Explanation</b>	<b>FY2024 Actuals</b>	<b>FY2025 Management Plan</b>	<b>FY2026 Governor</b>
3016 Inter-Agency Economic Development	Labor - Workforce Services (2761)	Reimbursable services agreement with Workforce Services for re-employment services provided to UI claimants.	360.2	360.2	360.2
3016 Inter-Agency Economic Development	Labor - Management Services (335)	Data Processing costs associated with TVEP & STEP tax collection efforts.	68.7	70.0	70.0
3017 Inter-Agency Information Technology Non-Telecommunications	Admin - Department-wide	Reimbursable services agreement with the Office of Information Technology for non-telecommunications support, including software and computer services.	549.6	554.2	554.2
3018 Inter-Agency Information Technology Telecommunications	Admin - Department-wide	Reimbursable services agreement with the Office of Information Technology for telecommunication support.	52.3	62.2	62.2
3019 Inter-Agency Storage	Labor - Management Services (335)	Moving, surplus, and storage expenses.	2.1	2.1	2.1
3021 Inter-Agency Mail	Admin - Department-wide	Reimbursable services agreement with Shared Services of Alaska for central mailroom support and services.	781.1	781.1	781.1
3022 Inter-Agency Human Resources	Admin - Department-wide	Reimbursable services agreement with the Division of Personnel and Labor Relations for human resources and personnel services.	108.8	162.0	162.0
3023 Inter-Agency Building Leases	Trans - Department-wide	State-owned facility space rent or other property leases.	522.2	846.0	846.0
3024 Inter-Agency Legal	Law - Department-wide	Reimbursable services agreement with the Department of Law for legal services.	115.0	125.0	125.0
3026 Inter-Agency Insurance	Admin - Department-wide	Reimbursable services agreement with the Division of Risk Management for risk management insurance charges for leased	11.2	13.8	13.8

**Inter-Agency Services (1682)**  
**Department of Labor and Workforce Development**

**Component:** Unemployment Insurance (2276)

Object Class		Servicing Agency	Explanation	FY2024 Actuals	FY2025 Management Plan	FY2026 Governor
3027	Inter-Agency Financial	Admin - Department-wide	buildings, repossessed properties, public official bonds, and overhead. Reimbursable services agreement with the Division of Finance for system services for State accounting and payroll (IRIS), and reporting (ALDER) systems.	130.7	128.6	128.6
3027	Inter-Agency Financial	Admin - Department-wide	Reimbursable services agreement with Shared Services of Alaska for travel and accounts payable services.	0.0	25.3	25.3
3037	State Equipment Fleet	Trans - Department-wide	State equipment fleet fixed cost services for equipment replacement, maintenance and fuel, both allowable and non-allowable.	18.4	18.4	18.4

**Personal Services Expenditure Detail**  
**Department of Labor and Workforce Development**

**Scenario:** FY2026 Governor (22363)  
**Component:** Unemployment Insurance (2276)  
**RDU:** Employment and Training Services (646)

PCN	Job Class Title	Time Status	Retire Code	Barg Unit	Location	Salary Sched	Range / Step	Comp Months	Split / Count	Annual Salaries	COLA	Premium Pay	Annual Benefits	Total Costs	UGF Amount
07?007	College Intern 2	NP	N	EE	Juneau	N05	9A	12.0		40,112	1,326	0	4,083	45,521	0
074100	Investigator 2	FT	A	GP	Anchorage	200	16Q	12.0		93,171	0	0	57,103	150,274	0
074101	Investigator 2	FT	A	GP	Anchorage	200	16O / P	12.0		89,653	0	0	55,667	145,320	0
074103	Office Assistant 1	FT	A	GP	Juneau	205	8C / D	12.0		39,504	0	0	35,196	74,700	0
074515	Ui Q/C Auditor	FT	A	GP	Anchorage	200	15E / F	12.0		62,673	0	0	44,654	107,327	0
074516	Investigator 2	FT	A	GP	Juneau	205	16C / D	12.0		66,049	0	0	46,032	112,081	0
075005	Spvr Ui Tax	FT	A	SS	Juneau	205	23D / E	12.0		118,804	5,019	0	73,014	196,837	0
075006	Administrative Assistant 2	FT	A	GP	Juneau	205	14A / B	12.0		54,191	0	0	41,191	95,382	0
075007	Investigator 2	FT	A	GP	Juneau	205	16D / E	12.0		69,456	0	0	47,423	116,879	0
075008	Ui Tech 3	FT	A	SS	Juneau	205	16A / B	12.0		68,058	2,875	0	52,299	123,232	0
075012	Accounting Technician 3	FT	A	SS	Juneau	605	16D / E	12.0		74,878	3,163	0	55,083	133,124	0
075014	Ui Tech 1	PT	A	GP	Juneau	205	14A / B	11.0		49,624	0	0	37,738	87,362	0
075017	Accounting Technician 3	FT	A	GP	Juneau	205	16J	12.0		78,215	0	0	50,998	129,213	0
075018	Supervisor, Audit Operations	FT	A	SS	Anchorage	200	19N / O	12.0		107,955	4,561	0	68,585	181,101	0
075022	Accounting Technician 4	FT	A	SS	Anchorage	200	18A / B	12.0		74,561	3,150	0	54,954	132,665	0
075026	Field Auditor 1	FT	A	GP	Fairbanks	203	16D / E	12.0		66,994	0	0	46,418	113,412	0
075027	Field Auditor 1	FT	A	GP	Kenai	200	16A / B	12.0		59,417	0	0	43,325	102,742	0
075028	Field Auditor 1	FT	A	GP	Anchorage	200	16C / D	12.0		63,882	0	0	45,147	109,029	0
075035	Administrative Assistant 2	FT	A	GP	Anchorage	200	14B / C	12.0		53,676	0	0	40,981	94,657	0
075037	Ui Tech 1	FT	A	GP	Juneau	205	14A / B	12.0		54,191	0	0	41,191	95,382	0
075039	Employment Security Analyst 2	FT	A	GP	Juneau	205	17F / G	12.0		77,899	0	0	50,869	128,768	0
075042	Investigator 3	FT	A	SS	Anchorage	99	18R / S	12.0		116,132	4,906	0	71,923	192,961	0
075045	Accounting Technician 2	FT	A	GP	Juneau	205	14A / B	12.0		54,191	0	0	41,191	95,382	0
075046	Accounting Technician 2	FT	A	GP	Juneau	205	14A / B	12.0		54,191	0	0	41,191	95,382	0
075051	Ui Tech 1	PT	A	GP	Anchorage	200	14A / B	11.0		47,262	0	0	36,774	84,036	0
075055	Accounting Technician 4	FT	A	SS	Juneau	205	18O	12.0		106,184	4,486	0	67,862	178,532	0
075060	Ui Tech 3	FT	A	SS	Juneau	205	16C / D	12.0		73,406	3,101	0	54,482	130,989	0
075114	Ui Claim Mgr 2	FT	A	SS	Anchorage	200	20J	12.0		98,426	4,158	0	64,695	167,279	0
075117	Ui Tech 2	FT	A	GP	Anchorage	200	15M / N	12.0		77,474	0	0	50,696	128,170	0
075128	Administrative Assistant 3	FT	A	GP	Anchorage	200	15D / E	12.0		61,039	0	0	43,987	105,026	0
075138	Ui Tech 1	FT	A	GP	Juneau	205	14B / C	12.0		55,304	0	0	41,646	96,950	0
075141	Ui Tech 1	FT	A	GP	Anchorage	200	14A / B	12.0		51,996	0	0	40,295	92,291	0
075145	Ui Tech 2	FT	A	GP	Anchorage	200	15A / B	12.0		55,309	0	0	41,648	96,957	0
075150	Investigator 2	FT	A	GP	Anchorage	200	16C / D	12.0		63,765	0	0	45,100	108,865	0
075159	Employment Security Analyst 3	FT	A	GP	Juneau	205	18J	12.0		89,388	0	0	55,559	144,947	0
075173	Ui Q/C Auditor	FT	A	GP	Juneau	205	15F / G	12.0		68,458	0	0	47,015	115,473	0

Note: If a position is split, an asterisk (\*) will appear in the Split/Count column. If the split position is also counted in the component, two asterisks (\*\*) will appear in this column. [No valid job title] appearing in the Job Class Title indicates that the PCN has an invalid class code or invalid range for the class code effective date of this scenario.

**Personal Services Expenditure Detail**  
**Department of Labor and Workforce Development**

**Scenario:** FY2026 Governor (22363)  
**Component:** Unemployment Insurance (2276)  
**RDU:** Employment and Training Services (646)

PCN	Job Class Title	Time Status	Retire Code	Barg Unit	Location	Salary Sched	Range / Step	Comp Months	Split / Count	Annual Salaries	COLA	Premium Pay	Annual Benefits	Total Costs	UGF Amount
075189	Appeals Officer 3	FT	A	SS	Anchorage	200	21J	12.0		105,102	4,440	0	67,421	176,963	0
075201	Accounting Technician 2	FT	A	GP	Juneau	205	14A / B	12.0		54,553	0	0	41,339	95,892	0
075210	Ui Tech 3	FT	A	SS	Anchorage	200	16D / E	12.0		72,492	3,062	0	54,109	129,663	0
075215	Ui Tech 3	FT	A	SS	Anchorage	200	16J / K	12.0		75,951	3,209	0	55,521	134,681	0
075223	Ui Tech 1	FT	A	GP	Juneau	205	14A / B	12.0		54,236	0	0	41,210	95,446	0
075233	Field Auditor 2	FT	A	GP	Anchorage	200	17A / B	12.0		63,629	0	0	45,044	108,673	0
075248	Field Auditor 1	FT	A	GP	Juneau	205	16F / G	12.0		74,824	0	0	49,614	124,438	0
075249	Accounting Technician 2	FT	A	GP	Juneau	205	14A / B	12.0		54,191	0	0	41,191	95,382	0
075253	Employment Security Analyst 1	FT	A	GP	Juneau	205	15C / D	12.0		62,161	0	0	44,445	106,606	0
075274	Accounting Technician 2	FT	A	GP	Anchorage	200	14C / D	12.0		55,427	0	0	41,696	97,123	0
075284	Ui Tech 1	FT	A	GP	Juneau	205	14J / K	12.0		69,755	0	0	47,545	117,300	0
075297	Ui Tech 1	PT	A	GP	Anchorage	200	14A / B	11.0		47,648	0	0	36,931	84,579	0
075302	Ui Tech 1	FT	A	GP	Anchorage	200	14F / G	12.0		60,476	0	0	43,757	104,233	0
075313	Ui Tech 3	FT	A	SS	Anchorage	200	16A / B	12.0		64,820	2,738	0	50,977	118,535	0
075314	Employment Security Analyst 2	FT	A	GP	Juneau	205	17A / B	12.0		66,807	0	0	46,341	113,148	0
075317	Ui Tech 1	FT	A	GP	Juneau	205	14A / B	12.0		54,191	0	0	41,191	95,382	0
075337	Ui Tech 1	FT	A	GP	Anchorage	200	14J	12.0		64,682	0	0	45,474	110,156	0
075351	Asst Dir Emp Se	FT	A	SS	Anchorage	200	22P / Q	12.0		148,178	6,260	0	85,004	239,442	0
075418	Field Auditor 1	FT	A	GP	Juneau	205	16C / D	12.0		66,664	0	0	46,283	112,947	0
075420	Ui Tech 1	FT	A	GP	Juneau	205	14L / M	12.0		74,566	0	0	49,508	124,074	0
075449	Employment Security Analyst 3	FT	A	SS	Juneau	205	18T / U	12.0		124,660	5,266	0	75,404	205,330	0
075457	Accounting Technician 2	FT	A	GP	Juneau	205	14A / B	12.0		54,311	0	0	41,240	95,551	0
075464	Field Auditor 1	FT	A	GP	Wasilla	200	16B / C	12.0		60,637	0	0	43,823	104,460	0
075469	Ui Tech 3	FT	A	SS	Juneau	205	16E / J	12.0		79,061	3,340	0	56,791	139,192	0
075477	Ui Tech 2	FT	A	GP	Anchorage	200	15A / B	12.0		55,309	0	0	41,648	96,957	0
075478	Ui Tech 1	FT	A	GP	Anchorage	200	14C / D	12.0		55,748	0	0	41,827	97,575	0
075480	Employment Security Analyst 2	FT	A	GP	Anchorage	200	17K / L	12.0		82,373	0	0	52,695	135,068	0
075482	Emp/Ui Tech Mgr	FT	A	SS	Juneau	205	20Q	12.0		129,272	5,461	0	77,287	212,020	0
075502	Emp/Ui Tech Mgr	FT	A	SS	Juneau	99	20P / Q	12.0		129,635	5,477	0	77,435	212,547	0
075515	Ui Tech 1	FT	A	GP	Anchorage	200	14D / E	12.0		56,913	0	0	42,303	99,216	0
075519	Ui Tech 1	FT	A	GP	Anchorage	200	14D / E	12.0		56,581	0	0	42,167	98,748	0
075539	Field Auditor 1	FT	A	GP	Fairbanks	203	16D / E	12.0		68,059	0	0	46,852	114,911	0
075540	Field Auditor 1	FT	A	GP	Anchorage	200	16M / N	12.0		83,982	0	0	53,352	137,334	0
075543	Ui Tech 1	FT	A	GP	Juneau	205	14A / B	12.0		54,191	0	0	41,191	95,382	0
075555	Accounting Technician 2	FT	A	GP	Anchorage	200	14A / B	12.0		51,610	0	0	40,138	91,748	0

Note: If a position is split, an asterisk (\*) will appear in the Split/Count column. If the split position is also counted in the component, two asterisks (\*\*) will appear in this column. [No valid job title] appearing in the Job Class Title indicates that the PCN has an invalid class code or invalid range for the class code effective date of this scenario.

**Personal Services Expenditure Detail**  
**Department of Labor and Workforce Development**

**Scenario:** FY2026 Governor (22363)  
**Component:** Unemployment Insurance (2276)  
**RDU:** Employment and Training Services (646)

PCN	Job Class Title	Time Status	Retire Code	Barg Unit	Location	Salary Sched	Range / Step	Comp Months	Split / Count	Annual Salaries	COLA	Premium Pay	Annual Benefits	Total Costs	UGF Amount
075557	Employment Security Analyst 3	FT	A	SS	Anchorage	200	18K / L	12.0		90,549	3,825	0	61,480	155,854	0
075560	Publications Specialist 3	FT	A	GP	Juneau	205	19M / N	12.0		105,448	0	0	62,115	167,563	0
075561	Ui Tech 2	FT	A	GP	Juneau	205	15F / G	12.0		69,540	0	0	47,457	116,997	0
075562	Ui Tech 3	FT	A	SS	Juneau	205	16N	12.0		89,835	3,795	0	61,189	154,819	0
075570	Ui Q/C Auditor	FT	A	GP	Anchorage	200	15O / P	12.0		82,381	0	0	52,699	135,080	0
075586	Ui Tech 1	FT	A	GP	Juneau	205	14C / D	12.0		58,560	0	0	42,975	101,535	0
075589	Ui Tech 1	PT	A	GP	Anchorage	200	14A / B	11.0		47,262	0	0	36,774	84,036	0
075590	Accounting Technician 2	FT	A	GP	Juneau	205	14M / N	12.0		75,372	0	0	49,837	125,209	0
075599	Ui Tech 1	FT	A	GP	Anchorage	200	14C / D	12.0		54,717	0	0	41,406	96,123	0
075601	Ui Tech 1	FT	A	GP	Anchorage	200	14L	12.0		68,952	0	0	47,217	116,169	0
075606	Ui Tech 1	PT	A	GP	Anchorage	200	14A / B	11.0		47,648	0	0	36,931	84,579	0
075607	Ui Tech 1	FT	A	GP	Anchorage	200	14L / M	12.0		71,008	0	0	48,056	119,064	0
075614	Ui Q/C Auditor	FT	A	GP	Anchorage	200	15J / K	12.0		71,704	0	0	48,340	120,044	0
075622	Accounting Technician 2	FT	A	GP	Juneau	205	14A / B	12.0		54,191	0	0	41,191	95,382	0
075624	Administrative Assistant 2	FT	A	GP	Juneau	205	14B / C	12.0		56,524	0	0	42,144	98,668	0
075626	Ui Q/C Auditor	FT	A	GP	Fairbanks	203	15G / J	12.0		70,762	0	0	47,956	118,718	0
075643	Ui Tech 1	PT	A	GP	Anchorage	200	14A / B	11.0		47,262	0	0	36,774	84,036	0
075654	Employment Security Analyst 3	FT	A	GP	Juneau	205	18A / B	12.0		71,773	0	0	48,368	120,141	0
075659	Employment Security Analyst 3	FT	A	GP	Juneau	205	18L / M	12.0		96,548	0	0	58,482	155,030	0
075660	Ui Tech 1	FT	A	GP	Anchorage	200	14A / B	12.0		51,996	0	0	40,295	92,291	0
075665	Bus Sv Pj Mgr 1	FT	A	GP	Juneau	205	20J / K	12.0		104,962	0	0	61,916	166,878	0
075666	Ui Tech 1	FT	A	GP	Juneau	205	14M	12.0		74,763	0	0	49,589	124,352	0
075672	Ui Q/C Spvr	FT	A	SS	Juneau	205	19D / E	12.0		90,903	3,840	0	61,625	156,368	0
075678	Ui Tech 1	FT	A	GP	Anchorage	200	14D / E	12.0		56,913	0	0	42,303	99,216	0
075680	Field Auditor 1	FT	A	GP	Wasilla	200	16A / B	12.0		59,633	0	0	43,413	103,046	0
075681	Field Auditor 2	FT	A	SS	Anchorage	200	17J	12.0		80,538	3,402	0	57,394	141,334	0
075682	Ui Tech 1	PT	A	GP	Juneau	205	14A / B	11.0		49,624	0	0	37,738	87,362	0
075689	Ui Q/C Auditor	FT	A	GP	Juneau	205	15A / B	12.0		58,078	0	0	42,778	100,856	0
075694	Employment Security Analyst 2	FT	A	GP	Juneau	205	17A / B	12.0		66,807	0	0	46,341	113,148	0
075711	Ui Tech 1	FT	A	GP	Juneau	205	14F / G	12.0		64,527	0	0	45,411	109,938	0
075712	Ui Tech 1	FT	A	GP	Juneau	205	14A / B	12.0		54,266	0	0	41,222	95,488	0
075713	Ui Tech 1	FT	A	GP	Juneau	205	14D / E	12.0		59,036	0	0	43,169	102,205	0
075714	Ui Q/C Auditor	FT	A	GP	Fairbanks	203	15O	12.0		84,065	0	0	53,386	137,451	0
075715	Ui Tech 1	PT	A	GP	Juneau	205	14A / B	11.0		49,624	0	0	37,738	87,362	0
075717	Employment Security	FT	A	GP	Anchorage	200	18F / G	12.0		80,932	0	0	52,107	133,039	0

Note: If a position is split, an asterisk (\*) will appear in the Split/Count column. If the split position is also counted in the component, two asterisks (\*\*) will appear in this column. [No valid job title] appearing in the Job Class Title indicates that the PCN has an invalid class code or invalid range for the class code effective date of this scenario.

**Personal Services Expenditure Detail**  
**Department of Labor and Workforce Development**

**Scenario:** FY2026 Governor (22363)  
**Component:** Unemployment Insurance (2276)  
**RDU:** Employment and Training Services (646)

PCN	Job Class Title	Time Status	Retire Code	Barg Unit	Location	Salary Sched	Range / Step	Comp Months	Split / Count	Annual Salaries	COLA	Premium Pay	Annual Benefits	Total Costs	UGF Amount
075720	Analyst 3 Ui Tech 1	PT	A	GP	Juneau	205	14A / B	11.0		49,624	0	0	37,738	87,362	0
075721	Employment Security Analyst 2	FT	A	GP	Juneau	205	17A / B	12.0		66,807	0	0	46,341	113,148	0
075724	Employment Security Analyst 3	FT	A	SS	Juneau	99	18M / N	12.0		110,580	4,672	0	69,657	184,909	0
075725	Ui Tech 1	PT	A	GP	Anchorage	200	14M / N	11.0		66,519	0	0	44,634	111,153	0
075727	Field Auditor 1	FT	A	GP	Juneau	205	16A / B	12.0		63,141	0	0	44,845	107,986	0
075738	Ui Tech 1	FT	A	GP	Anchorage	200	14C / D	12.0		55,748	0	0	41,827	97,575	0
075739	Field Auditor 1	FT	A	GP	Anchorage	200	16A / B	12.0		60,138	0	0	43,619	103,757	0
075747	Employment Security Analyst 2	FT	A	GP	Juneau	205	17C / D	12.0		70,844	0	0	47,989	118,833	0
075751	Ui Tech 3	FT	A	SS	Juneau	205	16A / B	12.0		68,058	2,875	0	52,299	123,232	0
075763	Ui Tech 2	FT	A	GP	Juneau	205	15A / B	12.0		58,078	0	0	42,778	100,856	0
075766	Employment Security Analyst 3	FT	A	SS	Juneau	205	18A / B	12.0		79,144	3,344	0	56,825	139,313	0
075767	Employment Security Analyst 3	FT	A	GP	Juneau	205	18K / L	12.0		93,931	0	0	57,413	151,344	0
075768	Appeals Officer 1	FT	A	GP	Anchorage	200	17A	12.0		62,069	0	0	44,407	106,476	0
075769	Appeals Officer 2	FT	A	GP	Juneau	205	19M	12.0		105,164	0	0	61,999	167,163	0
075780	Investigator 2	FT	A	GP	Anchorage	200	16G	12.0		71,526	0	0	48,268	119,794	0
075783	Ui Claim Mgr 2	FT	A	SS	Juneau	205	20M	12.0		113,755	4,806	0	70,953	189,514	0
075785	Ui Tech 1	FT	A	GP	Anchorage	200	14M	12.0		71,195	0	0	48,132	119,327	0
075787	Ui Tech 1	FT	A	GP	Juneau	205	14A / B	12.0		54,191	0	0	41,191	95,382	0
075816	Employment Security Analyst 2	FT	A	GP	Anchorage	200	17A / B	12.0		63,629	0	0	45,044	108,673	0
075817	Ui Tech 1	FT	A	GP	Juneau	205	14C / D	12.0		57,595	0	0	42,581	100,176	0
075820	Ui Tech 1	PT	A	GP	Juneau	205	14A / B	11.0		49,624	0	0	37,738	87,362	0
075821	Office Assistant 2	FT	A	GP	Juneau	205	10A / B	12.0		42,185	0	0	36,291	78,476	0
075832	Accounting Technician 2	FT	A	GP	Juneau	205	14A / B	12.0		54,191	0	0	41,191	95,382	0
075833	Ui Tech 1	FT	A	GP	Anchorage	200	14A / B	12.0		51,610	0	0	40,138	91,748	0
075838	Accounting Technician 2	FT	A	GP	Juneau	205	14A / B	12.0		54,191	0	0	41,191	95,382	0
075846	Ui Q/C Auditor	FT	A	GP	Anchorage	200	15P / Q	12.0		86,899	0	0	54,543	141,442	0
075854	Ui Tech 2	FT	A	GP	Juneau	205	15C / D	12.0		62,632	0	0	44,637	107,269	0
075857	Ui Tech 1	FT	A	GP	Anchorage	200	14B	12.0		52,182	0	0	40,371	92,553	0
075863	Ui Tech 1	FT	A	GG	Anchorage	200	14N	12.0		73,515	0	0	49,079	122,594	0
075869	Ui Tech 1	PT	A	GP	Anchorage	200	14A / B	11.0		47,262	0	0	36,774	84,036	0
075875	Ui Tech 1	PT	A	GP	Juneau	205	14A / B	11.0		49,624	0	0	37,738	87,362	0
075883	Ui Tech 1	FT	A	GP	Juneau	205	14B / C	12.0		55,613	0	0	41,772	97,385	0

Note: If a position is split, an asterisk (\*) will appear in the Split/Count column. If the split position is also counted in the component, two asterisks (\*\*) will appear in this column.  
 [No valid job title] appearing in the Job Class Title indicates that the PCN has an invalid class code or invalid range for the class code effective date of this scenario.

**Personal Services Expenditure Detail**  
**Department of Labor and Workforce Development**

**Scenario:** FY2026 Governor (22363)  
**Component:** Unemployment Insurance (2276)  
**RDU:** Employment and Training Services (646)

PCN	Job Class Title	Time Status	Retire Code	Barg Unit	Location	Salary Sched	Range / Step	Comp Months	Split / Count	Annual Salaries	COLA	Premium Pay	Annual Benefits	Total Costs	UGF Amount
075884	Ui Tech 1	FT	A	GP	Juneau	205	14D / E	12.0		60,253	0	0	43,666	103,919	0
075898	Ui Tech 1	FT	A	GP	Juneau	205	14B / C	12.0		55,613	0	0	41,772	97,385	0
075901	Employment Security Analyst 3	FT	A	SS	Juneau	205	18A / B	12.0		83,574	3,531	0	58,633	145,738	0
075917	Ui Tech 1	FT	A	GP	Anchorage	200	14A / B	12.0		51,996	0	0	40,295	92,291	0
075922	Emp/Ui Tech Mgr	FT	A	SS	Anchorage	200	20J / K	12.0		99,814	4,217	0	65,262	169,293	0
075923	Ui Tech 1	FT	A	GP	Juneau	205	14J / K	12.0		68,892	0	0	47,192	116,084	0
075924	Employment Security Analyst 3	FT	A	SS	Juneau	205	18J / K	12.0		91,169	3,852	0	61,733	156,754	0
075944	Ui Tech 3	FT	A	SS	Anchorage	200	16A / B	12.0		64,820	2,738	0	50,977	118,535	0
075952	Ui Tech 1	FT	A	GP	Juneau	205	14A / B	12.0		54,191	0	0	41,191	95,382	0
075966	Ui Tech 2	FT	A	GP	Anchorage	200	15A / B	12.0		55,309	0	0	41,648	96,957	0
075967	Ui Tech 1	PT	A	GP	Juneau	205	14A / B	11.0		49,624	0	0	37,738	87,362	0
075986	Employment Security Analyst 2	FT	A	GP	Juneau	205	17A / B	12.0		66,807	0	0	46,341	113,148	0
076014	Ui Tech 1	PT	A	GP	Anchorage	200	14A / B	11.0		47,648	0	0	36,931	84,579	0
076015	Ui Tech 1	PT	A	GP	Anchorage	200	14A / B	11.0		47,262	0	0	36,774	84,036	0
076017	Ui Tech 1	PT	A	GP	Anchorage	200	14A / B	11.0		47,262	0	0	36,774	84,036	0
076021	Ui Tech 1	PT	A	GP	Juneau	205	14A / B	11.0		49,624	0	0	37,738	87,362	0
076024	Ui Tech 1	PT	A	GP	Juneau	205	14A / B	11.0		49,624	0	0	37,738	87,362	0
076025	Ui Tech 1	PT	A	GP	Juneau	205	14A / B	11.0		49,624	0	0	37,738	87,362	0
076027	Ui Tech 1	PT	A	GP	Juneau	205	14A / B	11.0		49,624	0	0	37,738	87,362	0
076036	Ui Tech 1	FT	A	GP	Juneau	205	14C / D	12.0		58,507	0	0	42,953	101,460	0
076037	Ui Tech 1	FT	A	GP	Juneau	205	14A / B	12.0		54,191	0	0	41,191	95,382	0
076038	Investigator 2	FT	A	GP	Juneau	205	16M	12.0		86,073	0	0	54,206	140,279	0
07IN1905	College Intern 2	NP	N	EE	Anchorage	N00	9A / A	12.0		38,201	1,263	0	3,889	43,353	0
213054	Employment Security Analyst 2	FT	A	GP	Juneau	205	17A / B	12.0		67,196	0	0	46,500	113,696	0

Note: If a position is split, an asterisk (\*) will appear in the Split/Count column. If the split position is also counted in the component, two asterisks (\*\*) will appear in this column. [No valid job title] appearing in the Job Class Title indicates that the PCN has an invalid class code or invalid range for the class code effective date of this scenario.

**Personal Services Expenditure Detail**  
**Department of Labor and Workforce Development**

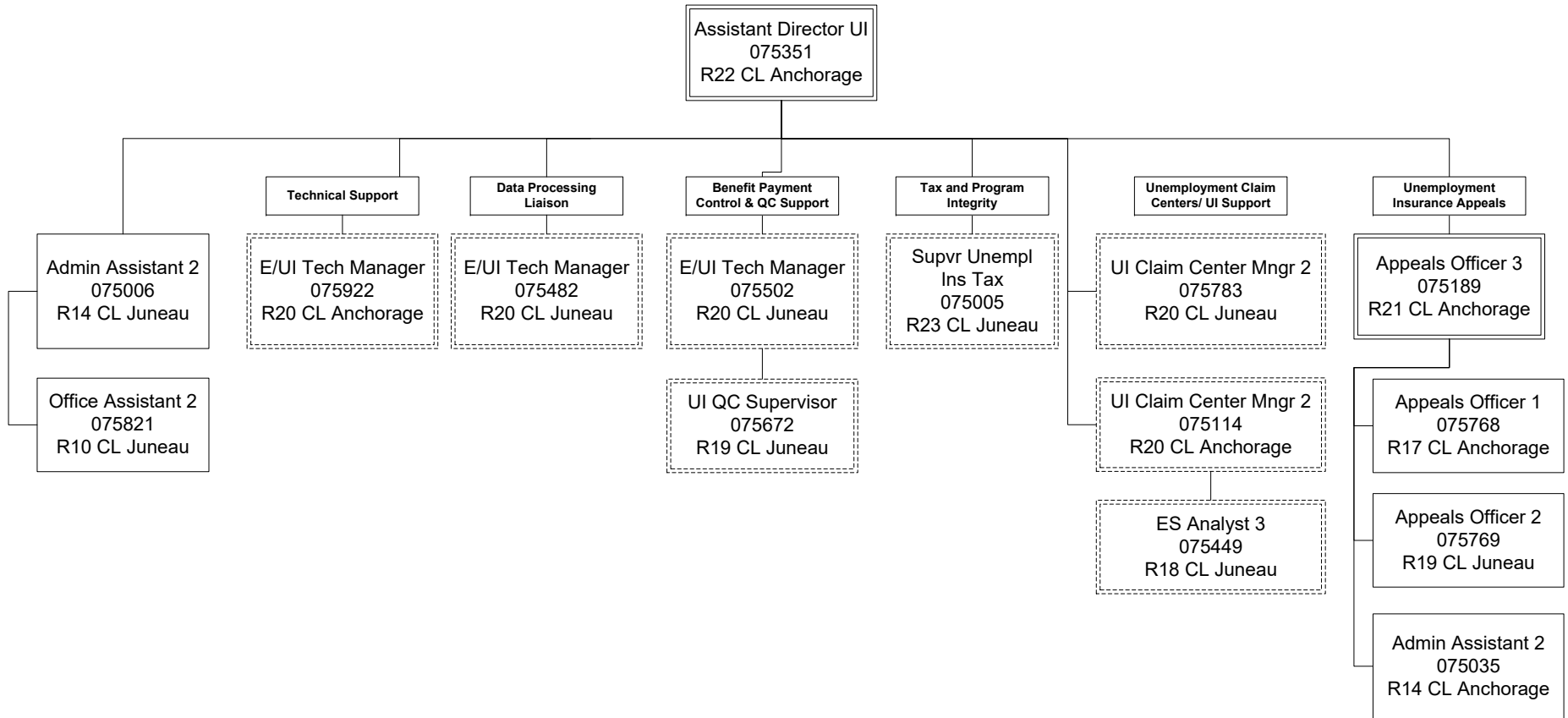
**Scenario:** FY2026 Governor (22363)  
**Component:** Unemployment Insurance (2276)  
**RDU:** Employment and Training Services (646)

PCN	Job Class Title	Time Status	Retire Code	Barg Unit	Location	Salary Sched	Range / Step	Comp Months	Split / Count	Annual Salaries	COLA	Premium Pay	Annual Benefits	Total Costs	UGF Amount
	<b>Total Positions</b>		<b>New</b>	<b>Deleted</b>										<b>Total Salary Costs:</b>	11,053,048
														<b>Total COLA:</b>	122,158
	<b>Full Time Positions:</b>	139	0	0										<b>Total Premium Pay:</b>	0
	<b>Part Time Positions:</b>	21	0	0										<b>Total Benefits:</b>	7,669,206
	<b>Non Permanent Positions:</b>	2	0	0											
	<b>Positions in Component:</b>	162	0	0											
	<b>Total Component Months:</b>	1,923.0													
														<b>Total Pre-Vacancy:</b>	18,844,412
														<b>Minus Vacancy Adjustment of 5.58%:</b>	(1,052,112)
														<b>Total Post-Vacancy:</b>	17,792,300
														<b>Plus Lump Sum Premium Pay:</b>	0
														<b>Personal Services Line 100:</b>	17,792,300

<b>PCN Funding Sources:</b>	<b>Pre-Vacancy</b>	<b>Post-Vacancy</b>	<b>Percent</b>
1002 Federal Receipts	17,946,418	16,944,442	95.23%
1007 Interagency Receipts	125,690	118,672	0.67%
1049 Training and Building Fund	25,795	24,355	0.14%
1054 Employment Assistance and Training Program Account	373,255	352,415	1.98%
1151 Technical Vocational Education Program Account	373,255	352,415	1.98%
<b>Total PCN Funding:</b>	<b>18,844,412</b>	<b>17,792,300</b>	<b>100.00%</b>

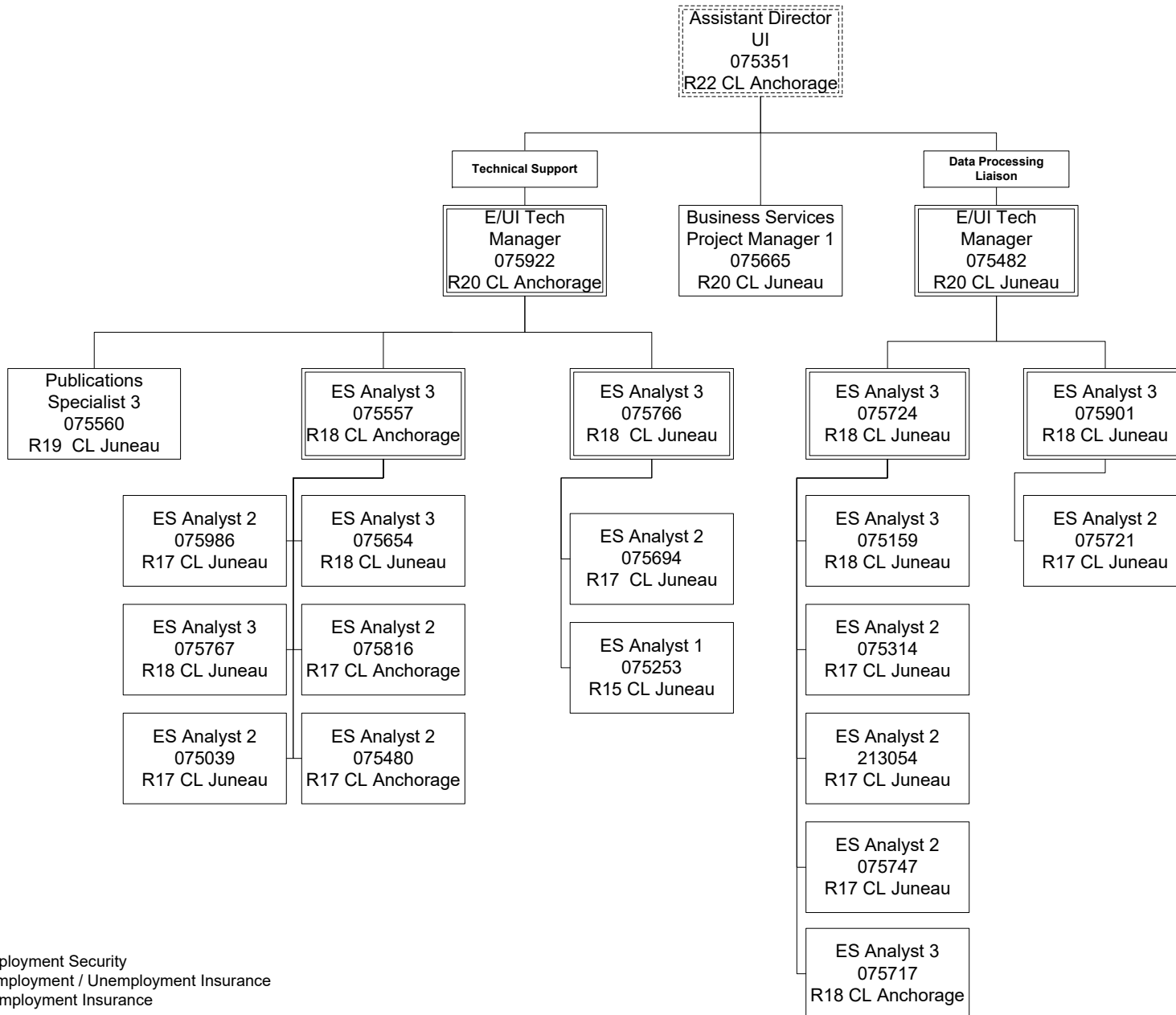
Note: If a position is split, an asterisk (\*) will appear in the Split/Count column. If the split position is also counted in the component, two asterisks (\*\*) will appear in this column. [No valid job title] appearing in the Job Class Title indicates that the PCN has an invalid class code or invalid range for the class code effective date of this scenario.

Department of Labor and Workforce Development  
 Division of Employment and Training Services  
 Unemployment Insurance (2276)  
 Administration and Appeals  
 FY2026 Governor Organization Chart



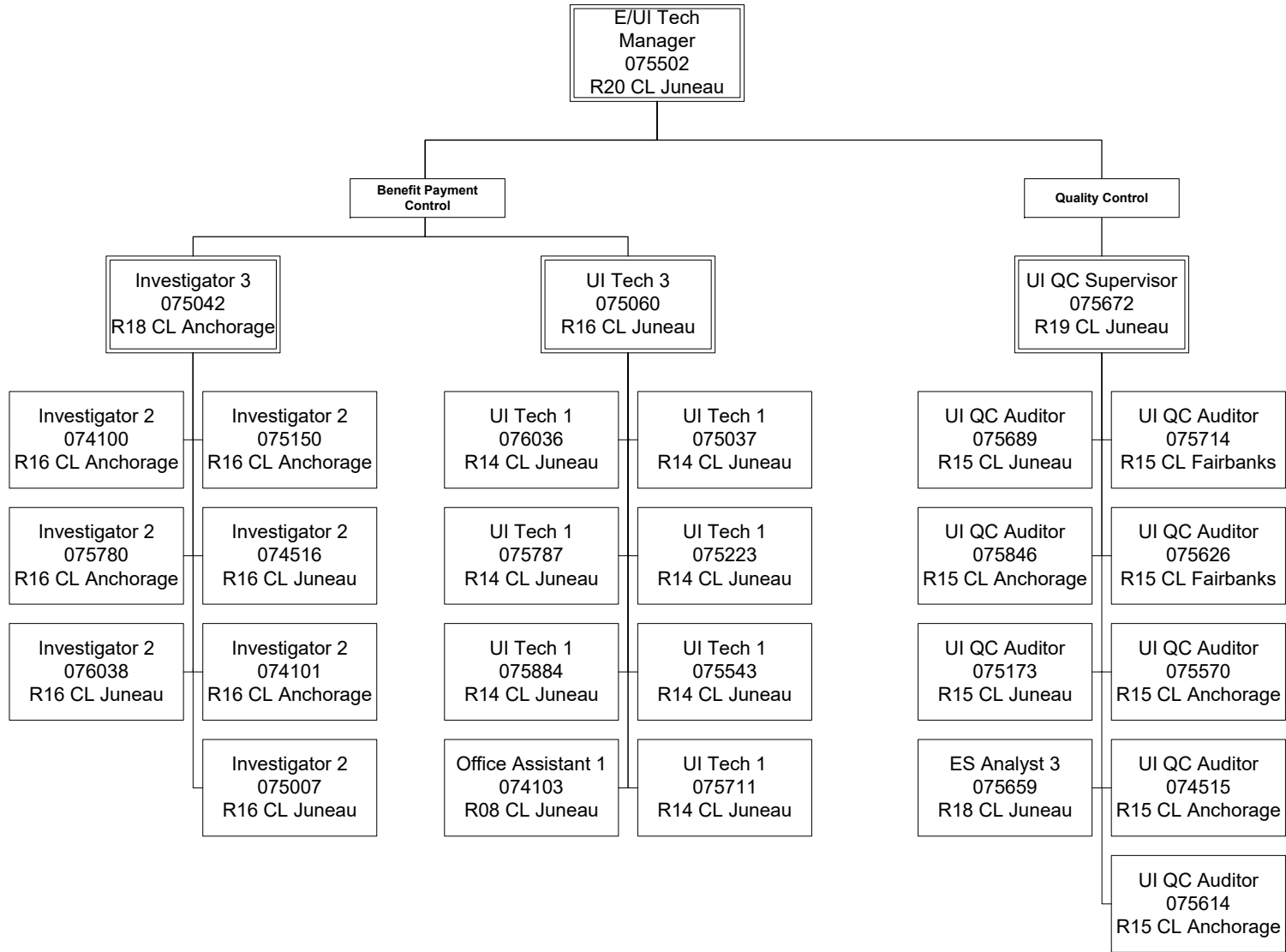
ES = Employment Security  
 E/UI = Employment / Unemployment Insurance  
 UI = Unemployment Insurance  
 QC = Quality Control

Department of Labor and Workforce Development  
 Division of Employment and Training Services  
 Unemployment Insurance (2276)  
 Tech Support and Data Processing Liaison  
 FY2026 Governor Organization Chart



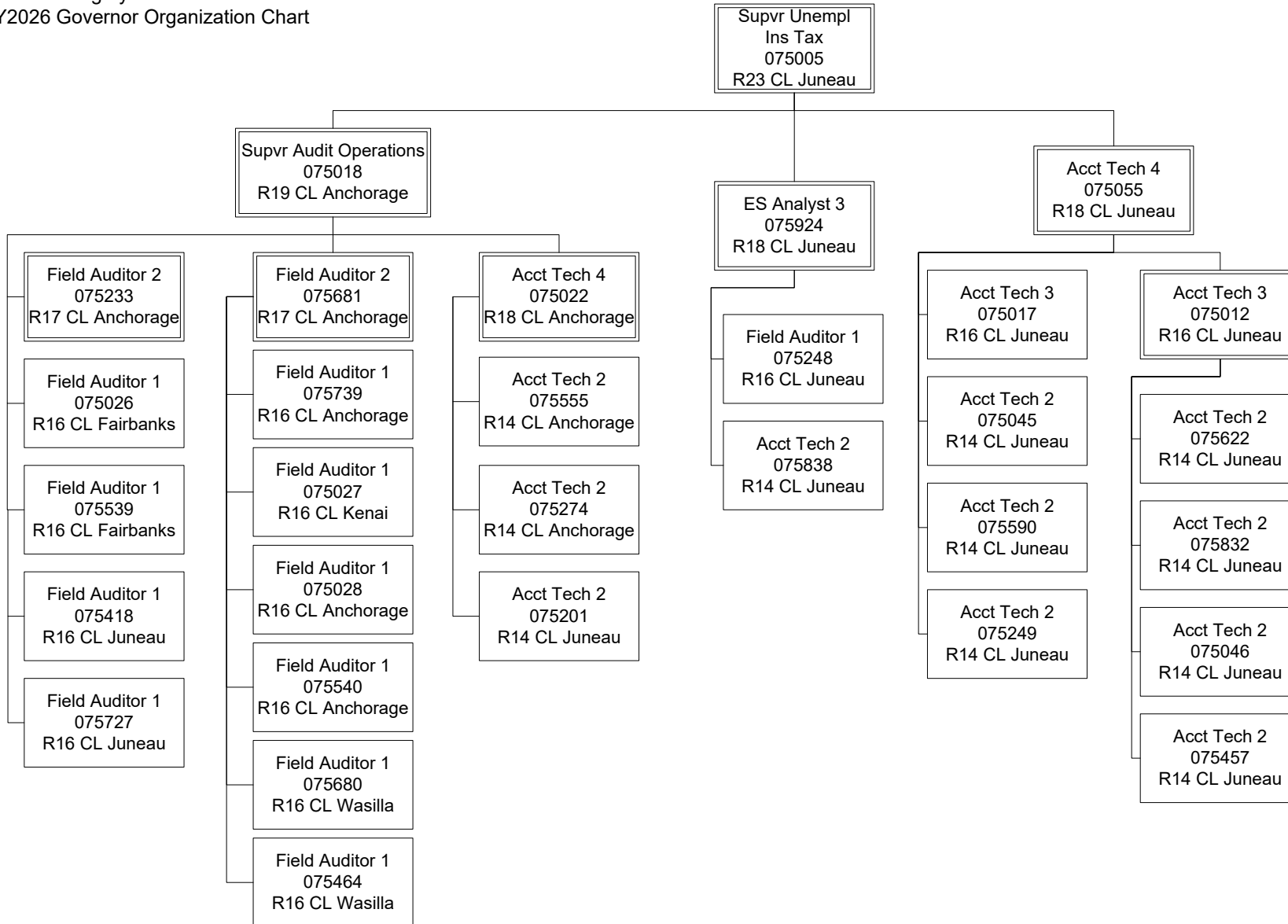
ES = Employment Security  
 E/UI = Employment / Unemployment Insurance  
 UI = Unemployment Insurance

Department of Labor and Workforce Development  
 Division of Employment and Training Services  
 Unemployment Insurance (2276)  
 Benefit Payment Control and Quality Control  
 FY2026 Governor Organization Chart



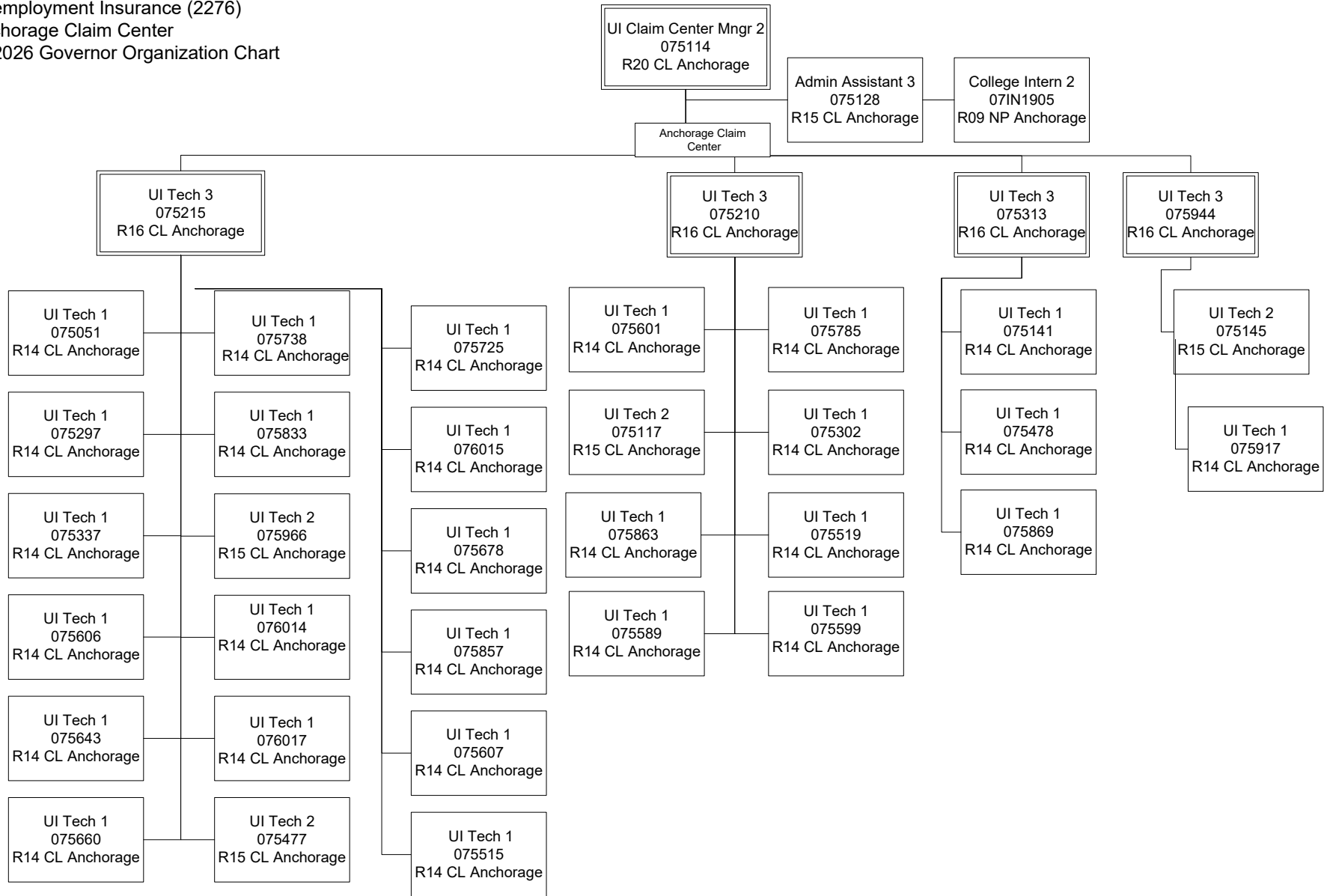
ES = Employment Security  
 E/UI = Employment / Unemployment Insurance  
 UI = Unemployment Insurance  
 QC = Quality Control

Department of Labor and Workforce Development  
 Division of Employment and Training Services  
 Unemployment Insurance (2276)  
 Tax and Integrity  
 FY2026 Governor Organization Chart



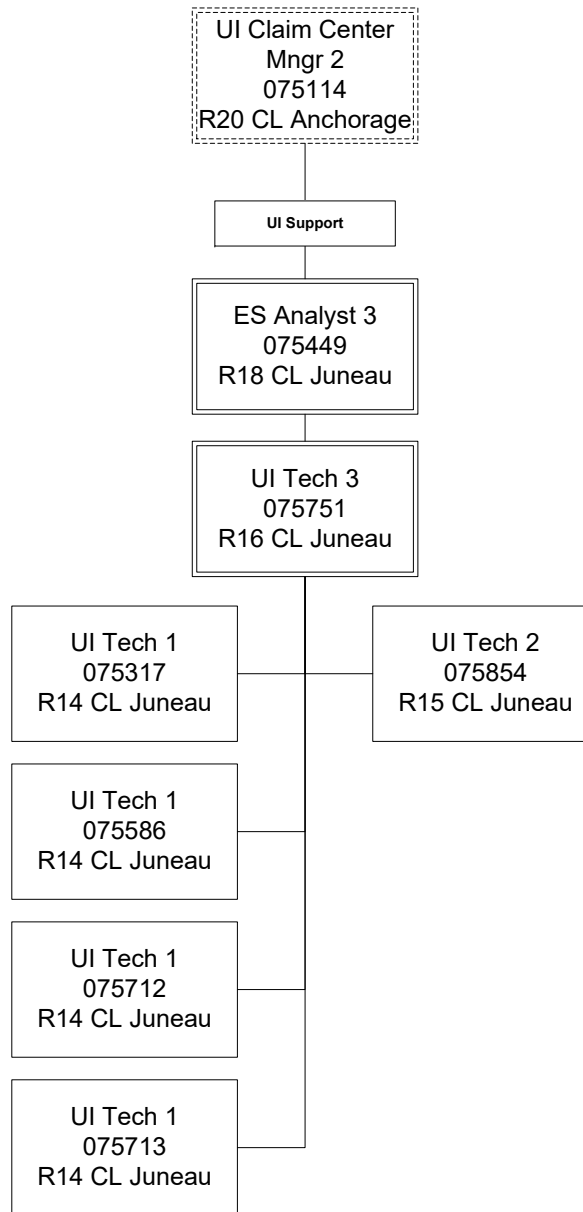
ES = Employment Security  
 E/UI = Employment / Unemployment Insurance  
 UI = Unemployment Insurance  
 QC = Quality Control

Department of Labor and Workforce Development  
 Division of Employment and Training Services  
 Unemployment Insurance (2276)  
 Anchorage Claim Center  
 FY2026 Governor Organization Chart



ES = Employment Security  
 E/UI = Employment / Unemployment Insurance  
 UI = Unemployment Insurance  
 QC = Quality Control

Department of Labor and Workforce Development  
Division of Employment and Training Services  
Unemployment Insurance (2276)  
UI Support  
FY2026 Governor Organization Chart



ES = Employment Security  
E/UI = Employment / Unemployment Insurance  
UI = Unemployment Insurance  
QC = Quality Control

Department of Labor and Workforce Development  
 Division of Employment and Training Services  
 Unemployment Insurance (2276)  
 Juneau Claim Center  
 FY2026 Governor Organization Chart

