

State of Alaska FY2026 Governor's Operating Budget

University of Alaska Sitka Campus Component Budget Summary

Component: Sitka Campus**Contribution to Department's Mission**

The UAS Sitka Campus is an integral part of regional programs offered by the UAS and is recognized as the lead UAS campus for healthcare workforce training and community outreach. Signifying a commitment to the success of Alaska Native students with an emphasis in support and retention of students especially in the rural areas, the Sitka Campus provides accessible, quality postsecondary academic, vocational, and continuing education opportunities with integrated student support services throughout the region and the state.

Core Services

- Sitka is a community campus of the University of Alaska Southeast and as such is accredited by the Northwest Commission on Colleges and Universities.
- Sitka offers postsecondary academic and workforce training programs. Unique offerings from the Sitka Campus include the Applied Fisheries, Medical Assisting, and the Health Information Management online programs. Sitka is the statewide leader in Aquaculture and Mariculture education. The Medical Assisting program is a nationally-accredited program with outreach to rural campuses across the State. The Health Information Management AAS is the only nationally accredited program in the UA system.
- Sitka prepares students for transfer to four-year institutions through local, hybrid, and online course delivery, offers programs and courses in response to local community needs, and provides occupational endorsements (OE), certificates and associate degrees in relevant workforce training programs, as well as general education.
- Sitka is the region's leader in health-related and patient care programs offering a unique variety of courses, many by distance, appealing to a diverse cross-section of Alaskans.
- Sitka has active partnerships with Mt. Edgecumbe High School, the Sitka School District, and the Alaska Public Safety Academy providing dual enrollment opportunities and preparing students for employment through the Welding OE, the Construction Technology OE, and the Law Enforcement OE.
- Sitka supports a wide variety of student services that include tutoring, academic advising, testing center, and mindful learning resource services for students both on campus and online.

Major Component Accomplishments in 2024

See University of Alaska Southeast Results Delivery Unit.

Key Component Challenges

See University of Alaska Southeast Results Delivery Unit.

Significant Changes in Results to be Delivered in FY2026

See University of Alaska Southeast Results Delivery Unit.

Statutory and Regulatory Authority

No statutes and regulations.

Contact Information

Contact: Michelle Rizk, Vice President, University Relations
Phone: (907) 450-8187
E-mail: marizk@alaska.edu

Sitka Campus Personal Services Information				
Authorized Positions			Personal Services Costs	
	<u>FY2025</u> <u>Management</u> <u>Plan</u>	<u>FY2026</u> <u>Governor</u>		
Full-time	35	35	Annual Salaries	0
Part-time	3	3	Premium Pay	0
Nonpermanent	0	0	Annual Benefits	0
			<i>Less % Vacancy Factor</i>	()
			Lump Sum Premium Pay	0
Totals	38	38	Total Personal Services	

Position Classification Summary					
Job Class Title	Anchorage	Fairbanks	Juneau	Others	Total
No personal services.					
Totals	0	0	0	0	0

Component Detail All Funds
University of Alaska

Component: Sitka Campus (764)
RDU: University of Alaska Southeast (237)

Non-Formula Component

	FY2024 Actuals	FY2025 Enrolled	FY2025 Authorized	FY2025 Management Plan	FY2026 Governor Adjusted Base	FY2026 Governor	FY2025 Management Plan vs FY2026 Governor		
1000 Personal Services	3,885.1	3,960.0	3,960.0	4,375.3	4,565.5	4,565.5	190.2	4.3%	
2000 Travel	142.9	121.0	121.0	153.0	153.0	153.0	0.0	0.0%	
3000 Services	655.1	853.3	2,377.7	2,368.0	843.5	584.3	-1,783.7	-75.3%	
4000 Commodities	363.6	1,127.8	1,127.8	1,090.2	1,090.2	1,090.2	0.0	0.0%	
5000 Capital Outlay	405.3	1,319.2	1,319.2	1,210.4	1,210.4	1,210.4	0.0	0.0%	
7000 Grants, Benefits	99.3	-91.8	-91.8	87.6	87.6	87.6	0.0	0.0%	
8000 Miscellaneous	0.0	0.0	0.0	0.0	0.0	0.0	0.0	0.0%	
Totals	5,551.3	7,289.5	8,813.9	9,284.5	7,950.2	7,691.0	-1,593.5	-17.2%	
Fund Sources:									
1002 Fed Rcpts (Fed)	353.2	1,480.1	1,480.1	1,480.1	1,480.1	1,480.1	0.0	0.0%	
1004 Gen Fund (UGF)	2,581.0	2,305.7	3,830.1	3,991.8	2,618.6	2,618.6	-1,373.2	-34.4%	
1007 I/A Rcpts (Other)	94.7	179.6	179.6	179.6	179.6	179.6	0.0	0.0%	
1048 Univ Rcpt (DGF)	2,281.0	3,276.6	3,276.6	3,326.3	3,365.2	3,365.2	38.9	1.2%	
1061 CIP Rcpts (Other)	8.5	0.0	0.0	0.0	0.0	0.0	0.0	0.0%	
1151 VoTech Ed (DGF)	206.6	0.0	0.0	259.2	259.2	0.0	-259.2	-100.0%	
1174 UA I/A (Other)	26.3	47.5	47.5	47.5	47.5	47.5	0.0	0.0%	
Unrestricted General (UGF)	2,581.0	2,305.7	3,830.1	3,991.8	2,618.6	2,618.6	-1,373.2	-34.4%	
Designated General (DGF)	2,487.6	3,276.6	3,276.6	3,585.5	3,624.4	3,365.2	-220.3	-6.1%	
Other Funds	129.5	227.1	227.1	227.1	227.1	227.1	0.0	0.0%	
Federal Funds	353.2	1,480.1	1,480.1	1,480.1	1,480.1	1,480.1	0.0	0.0%	
Positions:									
Permanent Full Time	35	35	35	35	35	35	0	0.0%	
Permanent Part Time	2	2	2	3	3	3	0	0.0%	
Non Permanent	0	0	0	0	0	0	0	0.0%	

Change Record Detail - Multiple Scenarios with Descriptions
University of Alaska

Component: Sitka Campus (764)
RDU: University of Alaska Southeast (237)

Scenario/Change Record Title	Trans Type	Totals	Personal Services	Travel	Services	Commodities	Capital Outlay	Grants, Benefits	Miscellaneous	Positions		NP
										PFT	PPT	
***** Changes From FY2025 Enrolled To FY2025 Authorized *****												
FY2025 Enrolled	Enrolled	7,289.5	3,960.0	121.0	853.3	1,127.8	1,319.2	-91.8	0.0	35	2	0
1002 Fed Rcpts		1,480.1										
1004 Gen Fund		2,305.7										
1007 I/A Rcpts		179.6										
1048 Univ Rcpt		3,276.6										
1174 UA I/A		47.5										
Extend Mariculture Research and Development Sec74 Ch11 SLA2022 P185 L22 (HB281) (FY23-FY26)												
	CarryFwd	1,524.4	0.0	0.0	1,524.4	0.0	0.0	0.0	0.0	0	0	0
1004 Gen Fund		1,524.4										
Sec22 Ch7 SLA2024 P96 L11 (HB268) (FY23-FY26)												
Section 74, ch. 11, SLA 2022, is amended to read: Sec. 74. UNIVERSITY OF ALASKA. The sum of \$29,800,000 is appropriated from the general fund to the University of Alaska for responding to the negative economic impacts of COVID-19 for the fiscal years ending June 30, 2023, [AND] June 30, 2024, June 30, 2025, and June 30, 2026, for the following purposes and in the following amounts:												
Mariculture research and development \$7,000,000												
Original Appropriation Sec74 Ch7 SLA2022 P185 L22 (HB281) (FY23-FY24): \$7,000.0												
FY2023 Allocated to Sitka Campus: \$1,750.0 - Adjusted Allocated to Sitka Campus \$1,932.6												
FY2023 Expenditures: \$132.9												
FY2024 Adjustment Increase: \$182.6												
FY2024 Expenditures: \$275.3												
FY2025 Carryforward: \$1,524.4												
This transaction allows the University of Alaska to continue to expend funds through FY2026.												
Subtotal		8,813.9	3,960.0	121.0	2,377.7	1,127.8	1,319.2	-91.8	0.0	35	2	0

***** Changes From FY2025 Authorized To FY2025 Management Plan *****

Distribute University of Alaska Receipt Authority												
	Trin	49.7	0.0	0.0	49.7	0.0	0.0	0.0	0.0	0	0	0
1048 Univ Rcpt		49.7										

Distribute University of Alaska Receipt Authority to better align with estimated expenditures in FY2025.

Budget Reductions/Additions – Systemwide: (\$7,590.2)
Systemwide Services: (\$3,277.4)
Office of Information Technology: \$300.0

Change Record Detail - Multiple Scenarios with Descriptions
University of Alaska

Component: Sitka Campus (764)

RDU: University of Alaska Southeast (237)

Scenario/Change Record Title	Trans Type	Totals	Personal Services	Travel	Services	Commodities	Capital Outlay	Grants, Benefits	Miscellaneous	Positions		NP
										PFT	PPT	
Anchorage Campus: \$2,689.5												
Kenai Peninsula College: \$69.3												
Kodiak College: \$35.0												
Matanuska-Susitna College: \$221.0												
Prince William Sound College: \$21.8												
Fairbanks Campus: \$3,482.5												
Bristol Bay Campus: \$31.0												
Chukchi Campus: \$16.1												
College of Rural and Community Development: \$20.8												
Interior Alaska Campus: \$46.9												
Kuskokwim Campus: \$50.6												
Northwest Campus: \$17.9												
University of Alaska Fairbanks Community Technical College: \$38.2												
Juneau Campus: \$427.0												
Ketchikan Campus: \$42.6												
Sitka Campus: \$49.7												
Education Trust of Alaska: \$3,307.7												
Transfer General Funds for Compensation and Fixed Costs Increases												
1004 Gen Fund	Trin	161.7	0.0	0.0	161.7	0.0	0.0	0.0	0.0	0	0	0
Distribute compensation and fixed cost increases to align with estimated expenditures in FY2025.												
Budget Reductions/Additions – Systemwide: (\$22,427.7)												
Systemwide Services: \$816.9												
Office of Information Technology: \$1,230.8												
Anchorage Campus: \$6,776.8												
Kenai Peninsula College: \$367.9												
Kodiak College: \$127.3												
Matanuska-Susitna College: \$299.6												
Prince William Sound College: \$149.4												
Fairbanks Campus: \$10,248.0												
Bristol Bay Campus: \$46.7												
Chukchi Campus: \$25.7												
College of Rural and Community Development: \$232.2												
Interior Alaska Campus: \$76.2												
Kuskokwim Campus: \$132.4												
Northwest Campus: \$60.9												
University of Alaska Fairbanks Community Technical College: \$316.3												
Juneau Campus: \$1,200.3												
Ketchikan Campus: \$158.6												

Change Record Detail - Multiple Scenarios with Descriptions
University of Alaska

Component: Sitka Campus (764)
RDU: University of Alaska Southeast (237)

Scenario/Change Record Title	Trans Type	Totals	Personal Services	Travel	Services	Commodities	Capital Outlay	Grants, Benefits	Miscellaneous	Positions		NP
										PFT	PPT	
Sitka Campus: \$161.7												
Transfer Technical Vocational Education Program Funds to Align with Distributions												
1151 VoTech Ed	Trin	259.2	0.0	0.0	259.2	0.0	0.0	0.0	0.0	0	0	0
Transfers between allocations to reallocate Technical Vocational Education Program funding to FY2025 Programs approved by the University of Alaska Workforce Development Committee.												
Budget Reductions/Additions – Systemwide: (\$6,151.0)												
Systemwide Services: \$218.5												
Anchorage Campus: \$1,504.2												
Kenai Peninsula College: \$648.4												
Kodiak College: \$575.2												
Matanuska-Susitna College: \$180.1												
Prince William Sound College: \$77.4												
Fairbanks Campus: \$376.0												
College of Rural and Community Development: \$81.9												
Interior Alaska Campus: \$94.5												
Kuskokwim Campus: \$47.4												
Northwest Campus: \$47.3												
University of Alaska Fairbanks Community Technical College: \$1,193.4												
Juneau Campus: \$334.3												
Ketchikan Campus: \$513.2												
Sitka Campus: \$259.2												
Position Adjustments for Anticipated Position Count												
	PosAdj	0.0	0.0	0.0	0.0	0.0	0.0	0.0	0.0	0	1	0
Position adjustments deemed necessary to accurately reflect the FY2025 Management Plan.												
Align Authority with Anticipated Expenditures												
	LIT	0.0	415.3	32.0	-480.3	-37.6	-108.8	179.4	0.0	0	0	0
Transfers between expenditure categories that the University of Alaska management and the Board of Regents have deemed necessary to accurately reflect expenditure levels for FY2025.												
	Subtotal	9,284.5	4,375.3	153.0	2,368.0	1,090.2	1,210.4	87.6	0.0	35	3	0
***** Changes From FY2025 Management Plan To FY2026 Governor Adjusted Base *****												
Extend Mariculture Research and Development Sec74 Ch11 SLA2022 P185 L22 (HB281) (FY23-FY26)												
	CarryFwd	0.0	0.0	0.0	0.0	0.0	0.0	0.0	0.0	0	0	0

Change Record Detail - Multiple Scenarios with Descriptions
University of Alaska

Component: Sitka Campus (764)
RDU: University of Alaska Southeast (237)

Scenario/Change Record Title	Trans Type	Totals	Personal Services	Travel	Services	Commodities	Capital Outlay	Grants, Benefits	Miscellaneous	Positions		
										PFT	PPT	NP

Zero-dollar transaction for carryforward tracking.

Sec22 Ch7 SLA2024 P96 L11 (HB268) (FY23-FY26)

Section 74, ch. 11, SLA 2022, is amended to read: Sec. 74. UNIVERSITY OF ALASKA. The sum of \$29,800,000 is appropriated from the general fund to the University of Alaska for responding to the negative economic impacts of COVID-19 for the fiscal years ending June 30, 2023, [AND] June 30, 2024, June 30, 2025, and June 30, 2026, for the following purposes and in the following amounts:

Mariculture research and development \$7,000,000

Original Appropriation Sec74 Ch7 SLA2022 P185 L22 (HB281) (FY23-FY24): \$7,000.0
 FY2023 Allocated to Sitka Campus: \$1,750.0 - Adjusted Allocated to Sitka Campus \$1,932.6
 FY2023 Expenditures: \$132.9
 FY2024 Adjustment Increase: \$182.6
 FY2024 Expenditures: \$275.3
 FY2025 Carryforward: \$1,524.4

This transaction allows the University of Alaska to continue to expend funds through FY2026.

Reverse Extend Mariculture Research and Development Sec74 Ch11 SLA2022 P185 L22 (HB281) (FY23-FY26)

	OTI	-1,524.5	0.0	0.0	-1,524.5	0.0	0.0	0.0	0.0	0.0	0	0	0
1004 Gen Fund		-1,524.5											

Sec22 Ch7 SLA2024 P96 L11 (HB268) (FY23-FY26)

Section 74, ch. 11, SLA 2022, is amended to read: Sec. 74. UNIVERSITY OF ALASKA. The sum of \$29,800,000 is appropriated from the general fund to the University of Alaska for responding to the negative economic impacts of COVID-19 for the fiscal years ending June 30, 2023, [AND] June 30, 2024, June 30, 2025, and June 30, 2026, for the following purposes and in the following amounts:

Mariculture research and development \$7,000,000

Original Appropriation Sec74 Ch7 SLA2022 P185 L22 (HB281) (FY23-FY24): \$7,000.0
 FY2023 Allocated to Sitka Campus: \$1,750.0 - Adjusted Allocated to Sitka Campus \$1,932.7
 FY2023 Expenditures: \$132.9
 FY2024 Adjustment Increase: \$182.7
 FY2024 Expenditures: \$275.3
 FY2025 Carryforward: \$1,524.5

This transaction allows the University of Alaska to continue to expend funds through FY2026.

Salaries and Benefits

Change Record Detail - Multiple Scenarios with Descriptions
University of Alaska

Component: Sitka Campus (764)
RDU: University of Alaska Southeast (237)

Scenario/Change Record Title	Trans Type	Totals	Personal Services	Travel	Services	Commodities	Capital Outlay	Grants, Benefits	Miscellaneous	Positions		
										PFT	PPT	NP
	SalAdj	53.8	53.8	0.0	0.0	0.0	0.0	0.0	0.0	0	0	0
1004 Gen Fund		49.0										
1048 Univ Rcpt		4.8										

In accordance with the University of Alaska's (UA) mission, the university is committed to providing a competitive total compensation package, including salary and benefits, that will attract, retain, and reward high-performing employees who share a passion for higher education. The University of Alaska strives to make employee compensation performance-based, competitive to institutions with similar missions, and commensurate with the individual's level of responsibility.

The FY2026 budget request includes a wage increase for employee groups as required by collective bargaining agreements and 2.75 percent wage increase for non-union staff.

The United Academics (UNAC, expires on 12/31/24) and United Academics Adjuncts (UNAD, expires 6/30/25) contracts expire in FY2025 and no increase has yet been negotiated for FY2026. Once a tentative agreement has been reached with a union, a funding request will be made through the appropriate legislative process. If the collective bargaining agreement is subsequently not approved by the University of Alaska Board of Regents, the State Department of Administration, or is not ratified by the bargaining unit members, the funding request will be withdrawn.

Staff Benefits Under Recovery and Healthcare

	SalAdj	136.4	136.4	0.0	0.0	0.0	0.0	0.0	0.0	0	0	0
1004 Gen Fund		102.3										
1048 Univ Rcpt		34.1										

In accordance with the University of Alaska's (UA) mission, the university is committed to providing a competitive total compensation package, including salary and benefits, that will attract, retain, and reward high-performing employees who share a passion for higher education. The University of Alaska strives to make employee compensation performance-based, competitive to institutions with similar missions, and commensurate with the individual's level of responsibility.

In FY2026, the university's medical (including dental and vision) plan is expecting an increase in premium costs (\$7.0 million) and under-recovery in FY2024 (\$10.8 million). The FY2026 budget includes a \$14.3 million (\$17.8 million total) request to help offset the cost increases.

Subtotal		7,950.2	4,565.5	153.0	843.5	1,090.2	1,210.4	87.6	0.0	35	3	0
***** Changes From FY2026 Governor Adjusted Base To FY2026 Governor *****												
Reverse Alaska Performance Scholarship; Eligibility Ch4 SLA2024 (HB148) (Sec2 Ch7 SLA2024 P46 L21 (HB268))												
	Dec	-259.2	0.0	0.0	-259.2	0.0	0.0	0.0	0.0	0	0	0
1151 VoTech Ed		-259.2										

This legislation removes the sunset date and changes the funding allocations for program and grant distributions under AS 23.15.835(d) for the Alaska Technical and Vocational Education Program (TVEP).

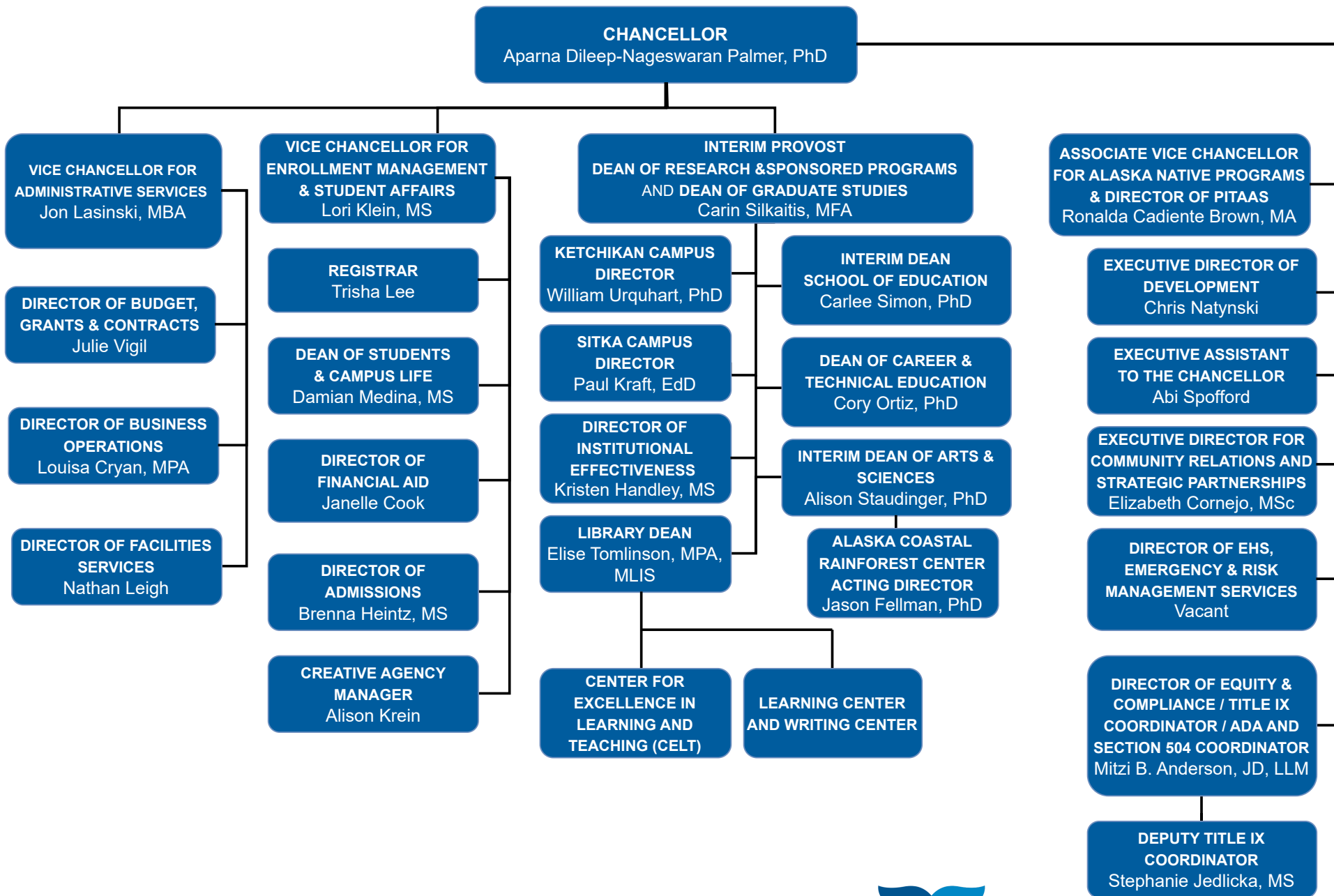
Funding authorization for the administrative portion of the TVEP program in the Workforce Investment Board component was included in the FY2025 Governor's budget. This fiscal note modifies the amount available to be distributed to TVEP grant recipients based on FY2025 revenue projections.

Change Record Detail - Multiple Scenarios with Descriptions
University of Alaska

Component: Sitka Campus (764)

RDU: University of Alaska Southeast (237)

Scenario/Change Record Title	Trans Type	Totals	Personal Services	Travel	Services	Commodities	Capital Outlay	Grants, Benefits	Miscellaneous	Positions		
										PFT	PPT	NP
	Totals	7,691.0	4,565.5	153.0	584.3	1,090.2	1,210.4	87.6	0.0	35	3	0



UNIVERSITY of ALASKA SOUTHEAST

updated 7/11/24

Personal Services Expenditure Detail
University of Alaska

Component: Sitka Campus (764)
RDU: University of Alaska Southeast (237)

Notes:

1. If a position is split, an asterisk (*) will appear in the Split/Count column. If the split position is also counted in the component, two asterisks (**) will appear in the column.
2. "Pool" PCN refers to UA temporary positions, such as adjunct faculty; student employees; and other non-permanent staff. Multiple incumbents may share the same labor pool position number and pooled budget.

PCN	Job Class Title	Location	Time Status	Split/Count	Employee Class	Benefit Rate	Annual		Total Costs	UGF Estimate
							Budgeted Salary	Annual Benefits		
640004	IS Net Technician 5	Sitka	FT		PERS - Classified	0.572	48,454	27,716	76,170	40,824
640010	Director (Admin)	Sitka	FT		Sr. Administrator	0.305	143,008	43,617	186,625	100,024
640012	Admin Specialist 1	Sitka	FT		PERS - Classified	0.572	49,374	28,242	77,616	41,599
640014	Fiscal Technician 3	Sitka	FT		PERS - Classified	0.572	51,900	29,687	81,587	43,727
640016	Student Svcs Professional 3	Sitka	FT		APT - Exempt Employees	0.462	59,070	27,290	86,360	46,286
640019	Administrative Management 2	Sitka	FT	**	APT - Exempt Employees	0.462	79,936	36,930	116,866	62,636
640022	Assistant Professor	Sitka	FT		United Academics BU	0.354	72,770	25,761	98,531	52,808
640032	Admin Specialist 2	Sitka	FT		PERS - Classified	0.572	55,089	31,511	86,600	46,414
640037	Crafts & Trades I (CT1)	Sitka	FT		AHECTE- Labor Trades & Crafts	0.519	57,614	29,902	87,516	46,905
640040	Student Svcs Professional 2	Sitka	FT		PERS - Classified	0.572	57,336	32,796	90,132	48,307
640056	Admin Generalist 4	Sitka	FT		PERS - Classified	0.572	52,949	30,287	83,236	44,611
640057	Fiscal Technician 3	Sitka	FT		PERS - Classified	0.572	49,374	28,242	77,616	41,599
640059	Associate Professor	Sitka	FT		United Academics BU	0.354	94,005	33,278	127,283	68,218
640060	Assistant Professor	Sitka	PT		United Academics BU	0.354	71,971	25,478	97,449	52,229
640063	Associate Professor	Sitka	FT		United Academics BU	0.354	76,880	27,216	104,096	55,791
640082	Associate Professor	Sitka	FT		United Academics BU	0.354	81,997	29,027	111,024	59,504
640100	Professor	Sitka	FT		United Academics BU	0.354	85,083	30,119	115,202	62,988
640103	Student Svcs Professional 2	Sitka	PT		PERS - Classified	0.572	56,159	32,123	88,282	47,316
640112	Instructional Designer 3	Sitka	FT		APT - Exempt Employees	0.462	63,992	29,564	93,556	50,142
640115	Professor	Sitka	PT		United Academics BU	0.354	96,132	34,031	130,163	69,762
640119	Assistant Professor	Sitka	FT		United Academics BU	0.354	76,048	26,921	102,969	55,187
640124	Associate Professor	Sitka	FT		United Academics BU	0.354	80,398	28,461	108,859	58,344
640201	Professor	Sitka	FT		United Academics BU	0.354	94,773	33,550	128,323	68,776
640221	Fac Svcs-MO&U Supervisor 4	Sitka	FT		APT - Exempt Employees	0.462	67,181	31,038	98,219	52,641
640301	Admin Specialist 3	Sitka	FT		APT - Exempt Employees	0.462	69,920	32,303	102,223	54,787
649093	Term Asst Professor	Sitka	FT		United Academics BU	0.354	68,757	24,340	93,097	49,896
649094	Instructional Designer 2	Sitka	FT		PERS - Classified	0.572	56,159	32,123	88,282	50,495
649095	Term Asst Professor	Sitka	FT		United Academics BU	0.354	60,268	21,335	81,603	46,674
649096	Research Technician 4	Sitka	FT		PERS - Classified	0.572	55,688	31,854	87,542	50,071
649099	Student Svcs Professional 2	Sitka	FT		PERS - Classified	0.572	52,949	30,287	83,236	47,608
649187	Student Svcs Professional 2	Sitka	FT		PERS - Classified	0.572	52,949	30,287	83,236	47,608
649190	Term Asst Professor	Sitka	FT		United Academics BU	0.354	68,341	24,193	92,534	52,926
649198	Admin Specialist 3	Sitka	FT		APT - Exempt Employees	0.462	60,268	27,844	88,112	50,397
649201	Term Asst Professor	Sitka	FT		United Academics BU	0.354	68,341	24,193	92,534	50,261

Personal Services Expenditure Detail
University of Alaska

Component: Sitka Campus (764)
RDU: University of Alaska Southeast (237)

Notes:

1. If a position is split, an asterisk (*) will appear in the Split/Count column. If the split position is also counted in the component, two asterisks (**) will appear in the column.
2. "Pool" PCN refers to UA temporary positions, such as adjunct faculty; student employees; and other non-permanent staff. Multiple incumbents may share the same labor pool position number and pooled budget.

PCN	Job Class Title	Location	Time Status	Split/Count	Employee Class	Benefit Rate	Annual		Total Costs	UGF Estimate	
							Budgeted Salary	Annual Benefits			
649230	Term Asst Professor	Sitka	FT		United Academics BU	0.354	70,516	24,963	95,479	51,173	
649234	Student Svcs Professional 3	Sitka	FT		APT - Exempt Employees	0.462	63,329	29,258	92,587	49,623	
649237	Term Assoc Professor	Sitka	FT		United Academics BU	0.354	76,880	27,216	104,096	55,791	
649241	Term Asst Professor	Sitka	FT		United Academics BU	0.354	71,060	25,155	96,215	51,568	
Pool	Adjunct Faculty	Sitka	PT		Non-Represented Adjunct Faculty	0	80,611	7,819	88,431	47,395	
Pool	Adjunct Faculty	Sitka	PT		UNAD Adjunct Faculty	0	192,210	18,644	210,854	113,009	
Pool	UA Labor Pool	Sitka	PT		Labor Pool	0	340,963		340,963	182,743	
Total Position Costs							3,230,703	1,144,598	4,375,300	2,368,666	
Full Time Positions:										35	
Part Time Positions:										3	
Positions in Component:										38	
								Federal Receipts (1002)		146,439	
								General Fund Receipts (1004)		2,368,666	
								Interagency Receipts (1007)		88,830	
								University Receipts (1048)		1,771,365	
								UA Intra-agency Transfers (1174)		0	
								UA Funding		4,375,300	